

April 26, 2016



410 17th Street, Suite 1400
Denver, CO 80202
(720) 440-6100 phone
(720) 305-0804 fax

BonanzaCrk.com

Colorado Oil and Gas Conservation Commission
The Chancery Building
1120 Lincoln Street, Suite 801
Denver, CO 80203
Matthew Lepore, Director

Re: Notice of 318A.a.(4)D. Proposed Codell Horizontal Wellbore Spacing Unit

Latham S-1-12MRLC

SHL: NESE (1831' FSL, 729' FEL) Sec.1-T4N-R63W, Weld County, CO

Top of Production: (1260' FSL, 1364' FEL) Sec. 1-T4N-R63W, Weld County, CO

Bottom of Production: (470' FSL, 1400' FEL) Sec. 12-T4N-R63W, Weld County, CO

Director Lepore:

Bonanza Creek Energy Operating Company LLC ("Bonanza") intends to permit, drill and operate the referenced Codell Horizontal Well. As defined by Colorado Oil and Gas Conservation Commission (COGCC) Rule 318A.a.(4)D., Bonanza proposes the following wellbore spacing unit:

SE/4 Section 1, Township 4N, Range 63W – containing 160 acres more or less

E/2 Sec. 12, Township 4N, Range 63W, Weld County, CO – containing 320 acres more or less

A map depicting the proposed wellbore spacing unit is attached, for your reference. Bonanza has notified the other owners in the unit and no objections were received. Copies of the notifications are maintained in Bonanza's files.

Bonanza respectfully requests that you review the enclosed wellbore spacing unit documentation and approve the Application for Permit to Drill.

Sincerely,

A handwritten signature in black ink, appearing to read 'Julie L. Vigil'.

Julie L. Vigil

Sr. Regulatory Specialist

BONANZA CREEK ENERGY OPERATING COMPANY LLC

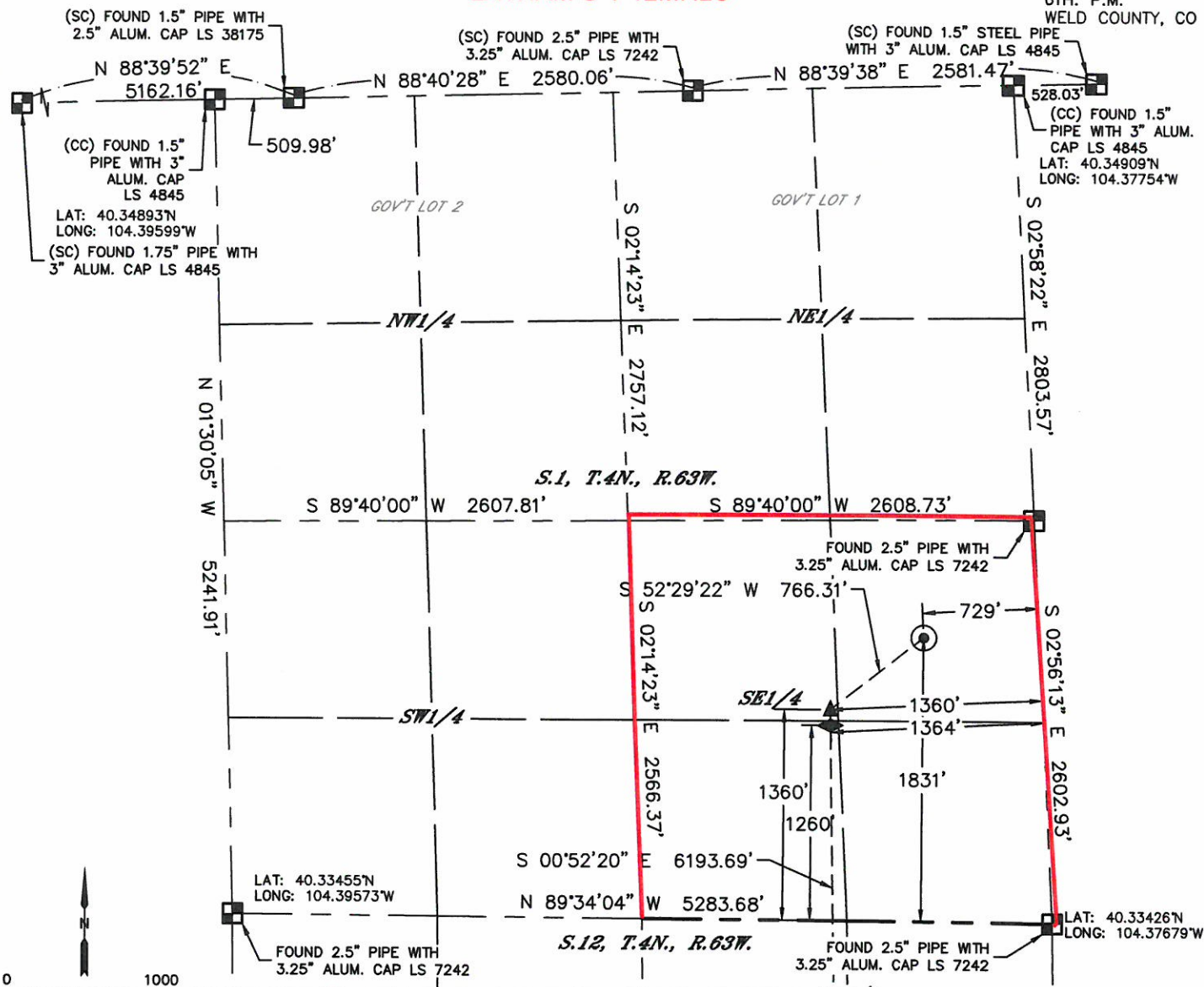


Lat40°, Inc. 6250 W. 10th Street, Unit 2, Greeley, CO 970-515-5294

WELL LOCATION CERTIFICATE

LATHAM S-1-12MRLC

SECTION: 1
TOWNSHIP: 4N
RANGE: 63W
6TH. P.M.
WELD COUNTY, CO



**BONANZA
CREEK**



Wellbore Spacing Unit Outline



Proposed Spacing Unit Map

November 9, 2015 KK

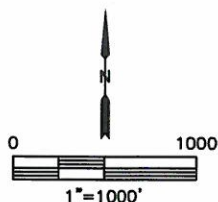
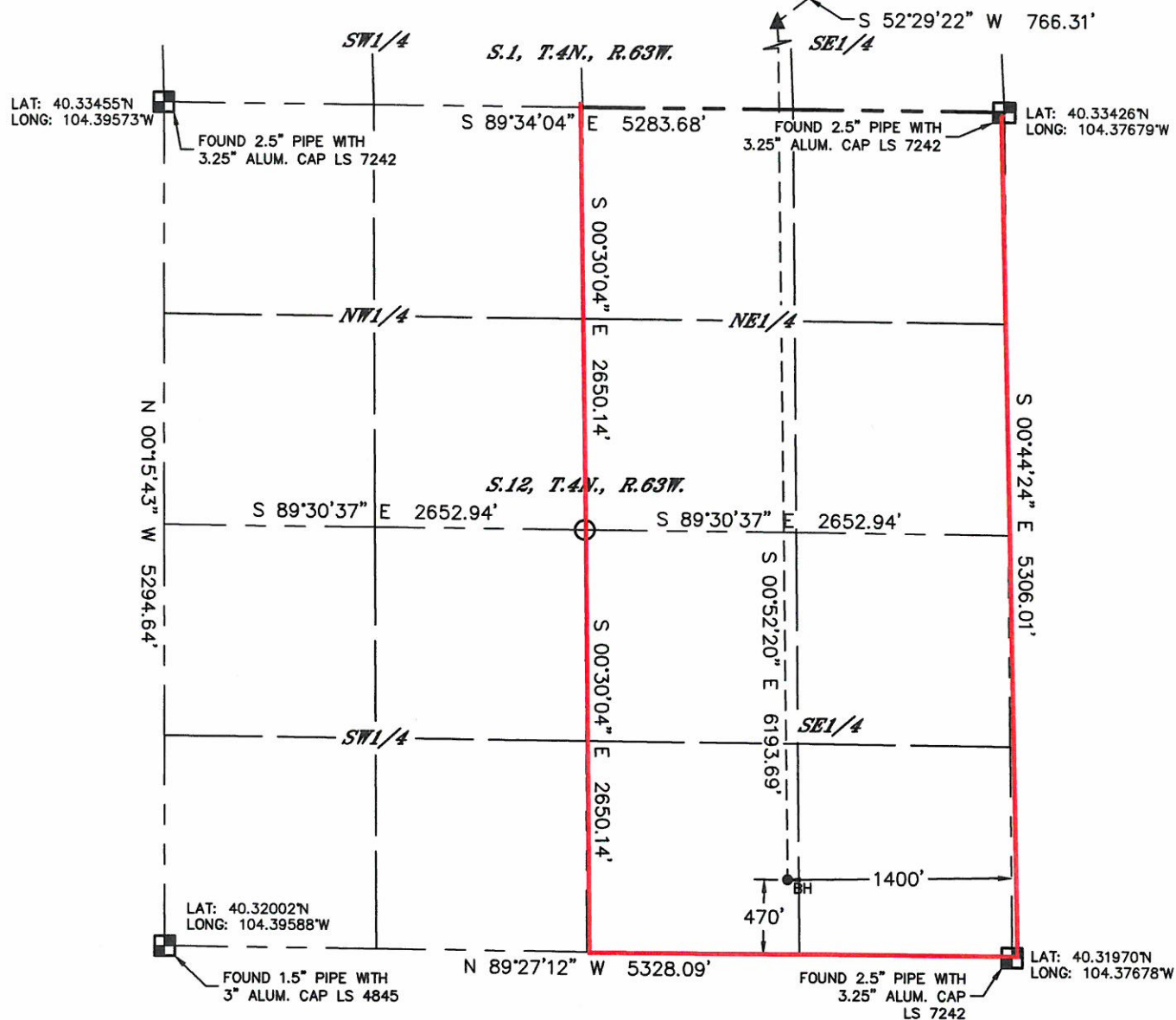
Latham S-1-12MRLC
SE/4 Section 1, Township 4N, Range 63W
E/2 Section 12, Township 4N, Range 63W
Weld County, Colorado

Lat40°, Inc. 6250 W. 10th Street, Unit 2, Greeley, CO 970-515-5294







WELL LOCATION CERTIFICATE

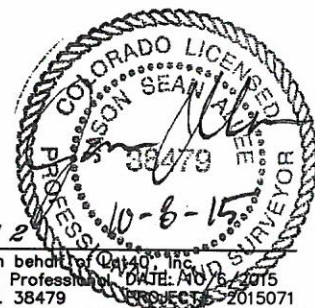
LATHAM S-1-12MRLC

SECTION: 1
TOWNSHIP: 4N
RANGE: 63W
6TH. P.M.
WELD COUNTY, CO



LEGEND

-  = ALIQUOT MONUMENT AS DESCRIBED
 = CALCULATED POSITION
 = SURFACE HOLE LOCATION (SHL)
 = TARGET 1 LOCATION (T1)
 = TOP OF PRODUCTION ZONE (TPZ)
 = BOTTOM HOLE LOCATION (BHL)



SHEET 2 OF 2

Jason S. Allee—On behalf of Qat40, Inc.
Colorado Licensed Professional Surveyor No. 38479
DATE: 10/6/2015
PROJECT: 2015071