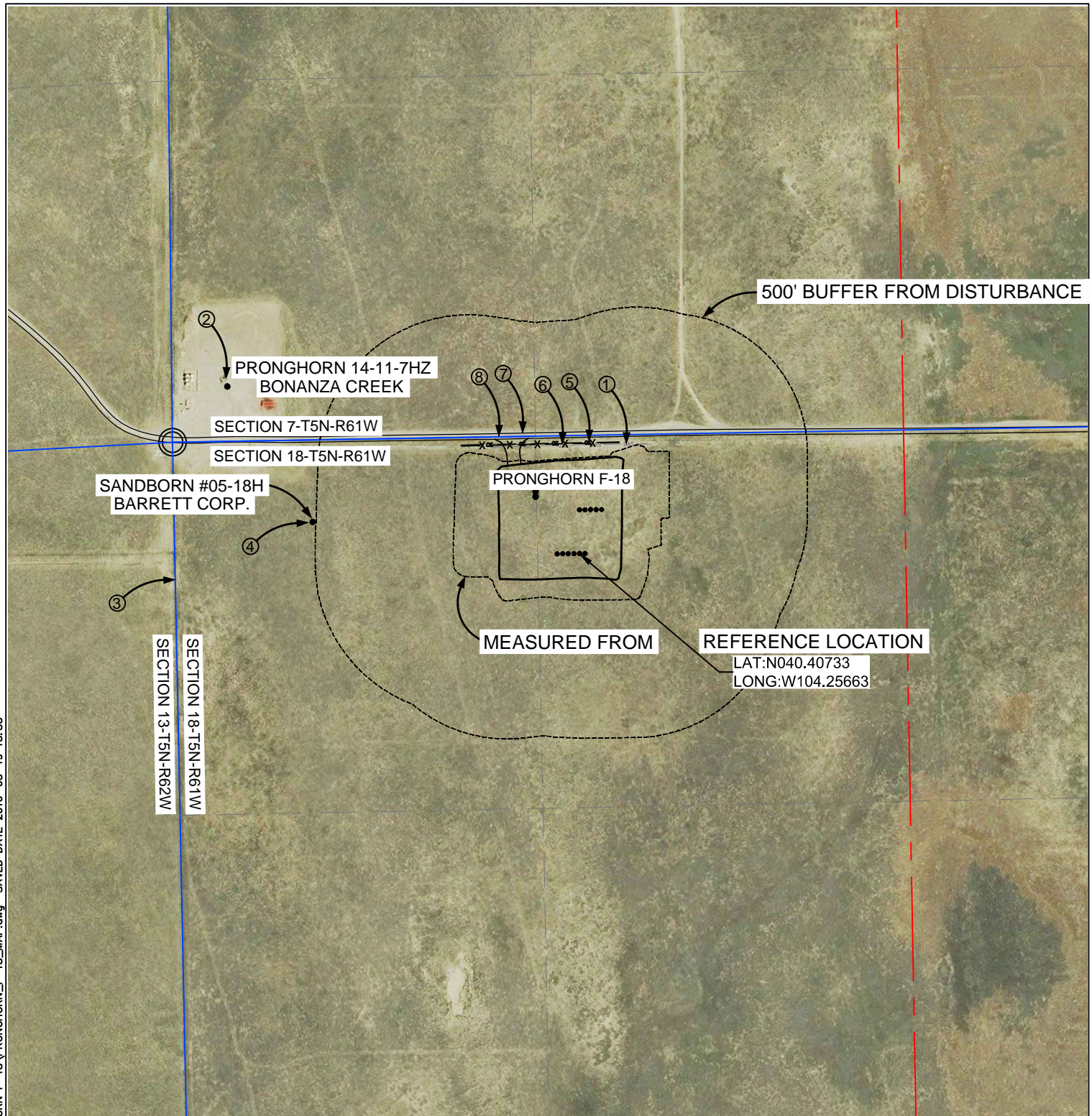


Z:\Projects\1319-01_BONANZA\5N-61W\DWG\PRONGHORN F-18\PRONGHORN_F-18_MAP.dwg SAVED DATE: 2016-03-19 13:33



MEASURED FROM REFERENCE LOCATION

- (#1) PIPELINE: ± 394' N03°13'W
- (#5) ABOVE GROUND UTILITY: ± 401' N01°12'W
- (#7) PUBLIC ROAD: ± 421' N01°17'W
- (#6) FENCELINE: ± 399' N01°12'W
- (#8) PROPERTY LINE: ± 428' N00°58'W TO NORTH SECTION LINE
- (#3) PROPERTY LINE: ± 1465' S88°50'W TO WEST SECTION LINE
- (#2) PRONGHORN 11-14-7HZ: ± 1412' N64°37'W
- (#4) BARRETT SANDBORN 5-18H: ± 973' N83°15'W

MEASURED FROM CLOSEST EDGE OF LOCATION

- (#1) PIPELINE: ± 4.0' N00°07'E
- (#5) ABOVE GROUND UTILITY: ± 28' N01°12'W
- (#7) PUBLIC ROAD: ± 47' N01°00'W
- (#6) FENCELINE: ± 25' N01°12'W
- (#8) PROPERTY LINE: ± 56' N00°58'W TO NORTH SECTION LINE
- (#3) PROPERTY LINE: ± 1008' S88°50'W TO WEST SECTION LINE
- (#2) PRONGHORN 11-14-7HZ: ± 874' S71°47'E
- (#4) BARRETT SANDBORN 5-18H: ± 512' S87°11'E

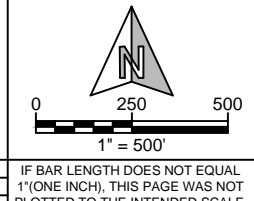
- REFERENCE LOCATION -

MEASUREMENTS MADE FROM REFERENCE WELL:
 PRONGHORN 21-24-18HNB
 LAT: 40.40733 LONG: 104.25663 (NAD83)
 EXISTING GROUND ELEVATION 4565'
 WELL FOOTAGES: 428' FNL & 1465' FWL



WILLIAM H. SMITH & ASSOCIATES, Inc.
 155 N. 1st Street
 Lander, WY 82520
 Phone: 307-335-5646

Drawn By: MAM	Checked By: DAF
Job No.:	Date: 03/17/16
Revision:	



LOCATION DRAWING

PRONGHORN
 F-18 PAD
 NW¼, SECTION 18,
 T.5N., R.61W., 6th PM
 WELD COUNTY, COLORADO



SHEET	1
OF	1