

April 11, 2016



410 17th Street, Suite 1400
Denver, CO 80202
(720) 440-6100 phone
(720) 305-0804 fax

Bonanzacr.com

Colorado Oil and Gas Conservation Commission
The Chancery Building
1120 Lincoln Street, Suite 801
Denver, CO 80203
Matthew Lepore, Director

Re: Notice of 318A.a.(4)D. Proposed Niobrara Horizontal Wellbore Spacing Unit

Pronghorn A-E-18HNC

SHL: NENW (428' FNL, 1385' FWL) Section 18-T5N-R61W, Weld County, CO
Top of Production: (631' FNL, 10' FWL) Section 18-T5N-R61W, Weld County, CO
Bottom of Production: (470' FSL, 10' FWL) Section 18-T5N-R61W, Weld County, CO

Director Lepore:

Bonanza Creek Energy Operating Company LLC, (Bonanza) intends to permit, drill and operate the referenced Niobrara Formation Horizontal Well. As defined by Colorado Oil and Gas Conservation Commission (COGCC) Rule 318A.a.(4)D., Bonanza proposes the following wellbore spacing unit:

W/2W/2 Section 18-T5N-R61W, Weld County, CO – containing 160 acres more or less
E/2E/2 Section 13-T5N-R62W, Weld County, CO – containing 160 acres more or less

Bonanza has notified the other owners in the unit and no objections were received. Copies of the notifications are maintained in Bonanza's files.

Bonanza respectfully requests that you review the enclosed wellbore spacing unit documentation and approve the referenced APD.

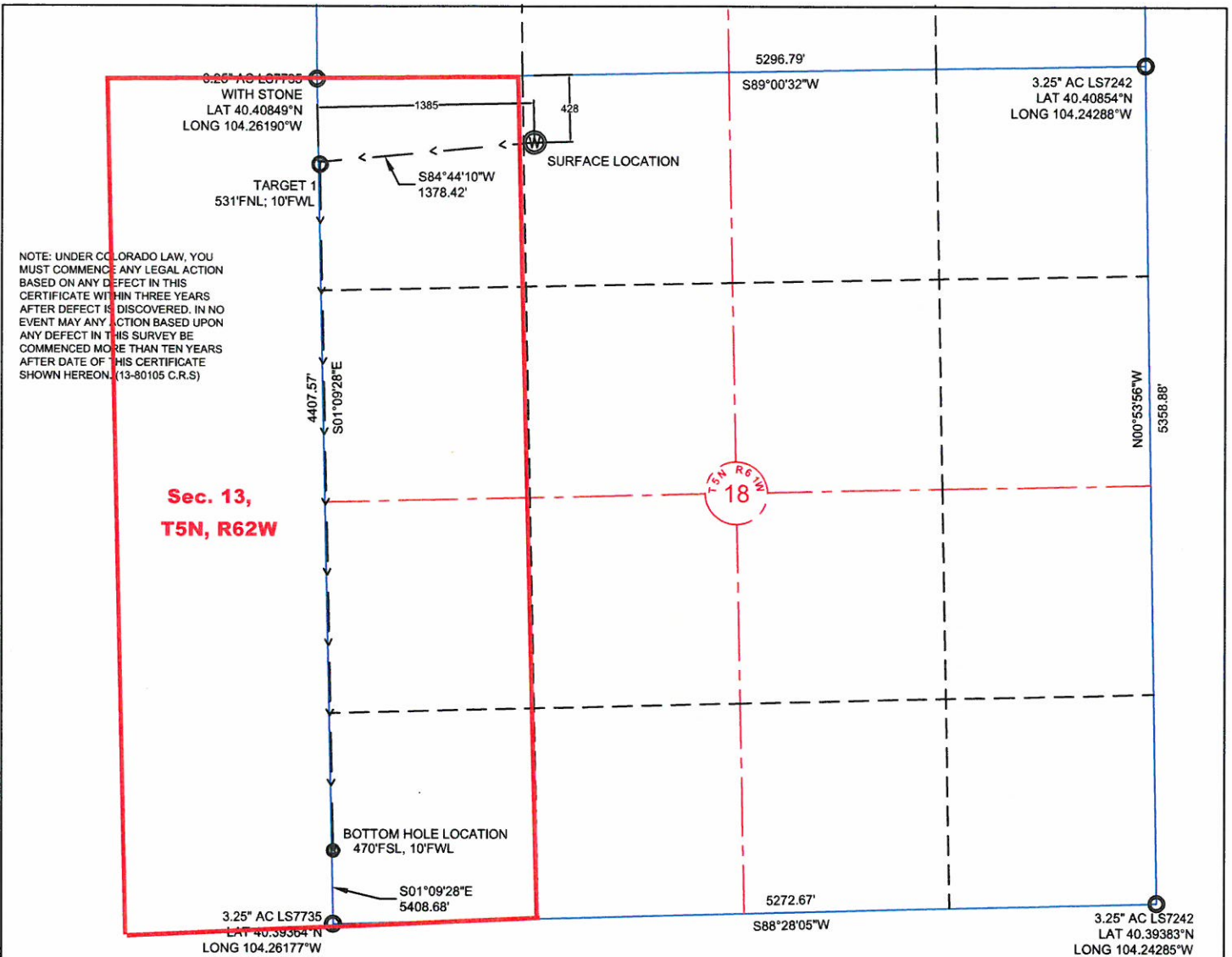
Please do not hesitate to call or email me, directly, at (303) 803-1718 or JVigil@BonanzaCrk.com, should you have any questions pertaining to this matter.

Sincerely,

A handwritten signature in blue ink that reads 'Julie L. Vigil'.

Julie L. Vigil
Sr. Regulatory Specialist
BONANZA CREEK ENERGY OPERATING COMPANY, LLC

Z:\Projects\1319-01_BONANZA\SN-61W\DWG\PRONGHORN F-18\PRONGHORN F-18_CERTS\sevi.dwg_SAVED DATE 2015-12-03 16:18



- NOTES:
- ALL BEARINGS ARE GRID BASED UPON THE COLORADO STATE PLANE COORDINATE SYSTEM, NORTH ZONE, NAD83(2011) DERIVED FROM POST-PROCESSED STATIC GPS OBSERVATIONS.
 - DISTANCES ARE ON GRID
 - VERTICAL DATUM IS NAVD88 BASED UPON GPS OBSERVATIONS
 - PDOP VALUE EQUALS 1.6.
 - GPS OPERATOR: MIKE JOHNSON.
 - UNDISTURBED GROUND ELEVATION AT WELLHEAD = 4565'
 - ALL SECTION LENGTHS ARE MEASURED DISTANCES UNLESS NOTED BY (R), RECORD BEARING AND DISTANCE

CERTIFICATE OF SURVEYOR:
I, DAVID A. FEHRINGER OF LANDER, WYOMING HEREBY CERTIFY THAT THIS WELL LOCATION CERTIFICATE WAS PREPARED FROM NOTES TAKEN DURING AN ACTUAL SURVEY ON DECEMBER 15, 2015; AND THAT IT CORRECTLY SHOWS THE DRILLING LOCATION OF BONANZA CREEK ENERGY, INC., PRONGHORN A-E-18HNC AS STAKED DURING SAID SURVEY. THIS MAP DOES NOT REPRESENT A BOUNDARY SURVEY OR AN IMPROVEMENT LOCATION PLAT AND



Proposed Spacing Unit Map
December 28, 2015
KK

Pronghorn A-E-18HNC
W/2W/2 Sec. 18-T5N-R61W
E/2E/2 Sec. 13-T5N-R62W
Weld County, Colorado