

BONANZA CREEK ENERGY INC.

WELD COUNTY, COLORADO (NAD 83)

NE NW SEC. 18 T5N R61W 6th P.M.

PRONGHORN A-E-18HNC - OPT 2

OPTION 2

09 November, 2015

Plan: PROPOSAL #2





Project: WELD COUNTY, COLORADO (NAD 83)
 Site: NE NW SEC. 18 T5N R61W 6th P.M.
 Well: PRONGHORN A-E-18HNC - OPT 2
 Wellbore: OPTION 2
 Design: PROPOSAL #2

ANNOTATIONS

TVD	MD	Inc	Azi	+N/-S	+E/-W	Vsect	Dep	Annotation
800.0	800.0	0.00	0.00	0.0	0.0	0.0	0.0	START NUDGE (2°/100ft BUR)
1825.2	1848.5	20.97	286.60	54.2	-181.8	0.0	189.7	EOB TO 20.97° INC
4583.5	4802.4	20.97	286.60	356.2	-1194.9	0.1	1246.8	END OF TANGENT
5608.7	5850.8	0.00	0.00	410.4	-1376.7	0.1	1436.6	EOD TO VERTICAL
5638.7	5880.8	0.00	0.00	410.4	-1376.7	0.1	1436.6	KOP (12°/100ft BUR)
6099.9	6505.8	75.00	179.64	56.5	-1374.5	338.6	1790.5	START OF TANGENT
6125.8	6605.8	75.00	179.64	-40.1	-1373.9	431.0	1887.1	END OF TANGENT
6142.0	6730.8	90.00	179.64	-163.6	-1373.1	549.2	2010.6	7" ICP *NEW* - PRONGHORN A-E-18HNC
6142.0	11081.1	90.00	179.64	-4513.8	-1345.9	4710.2	6360.9	BHL - PRONGHORN A-E-18HNC

PROPOSED LOCAL COORDINATES:

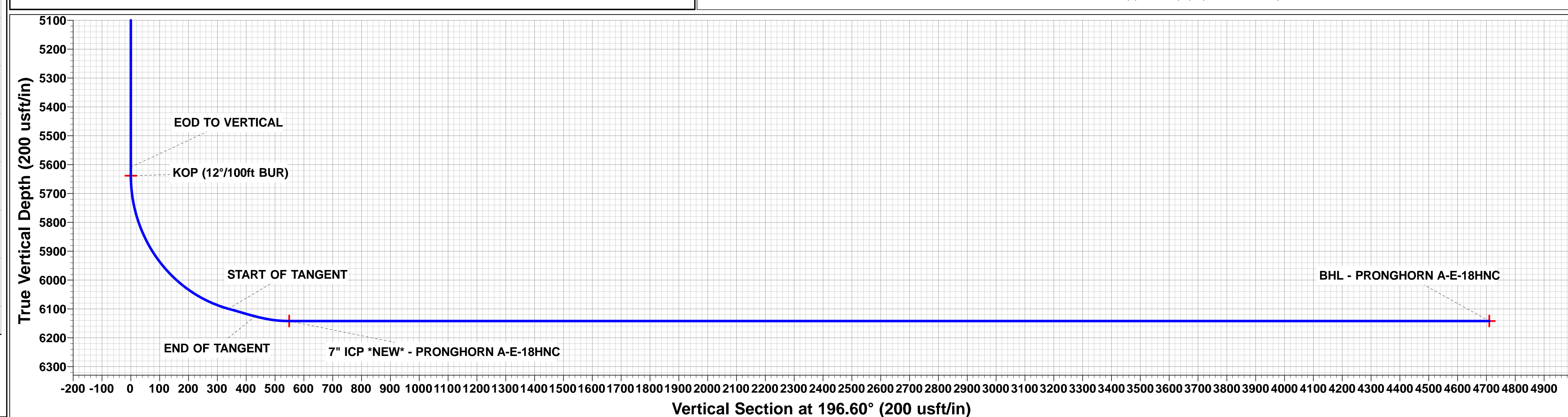
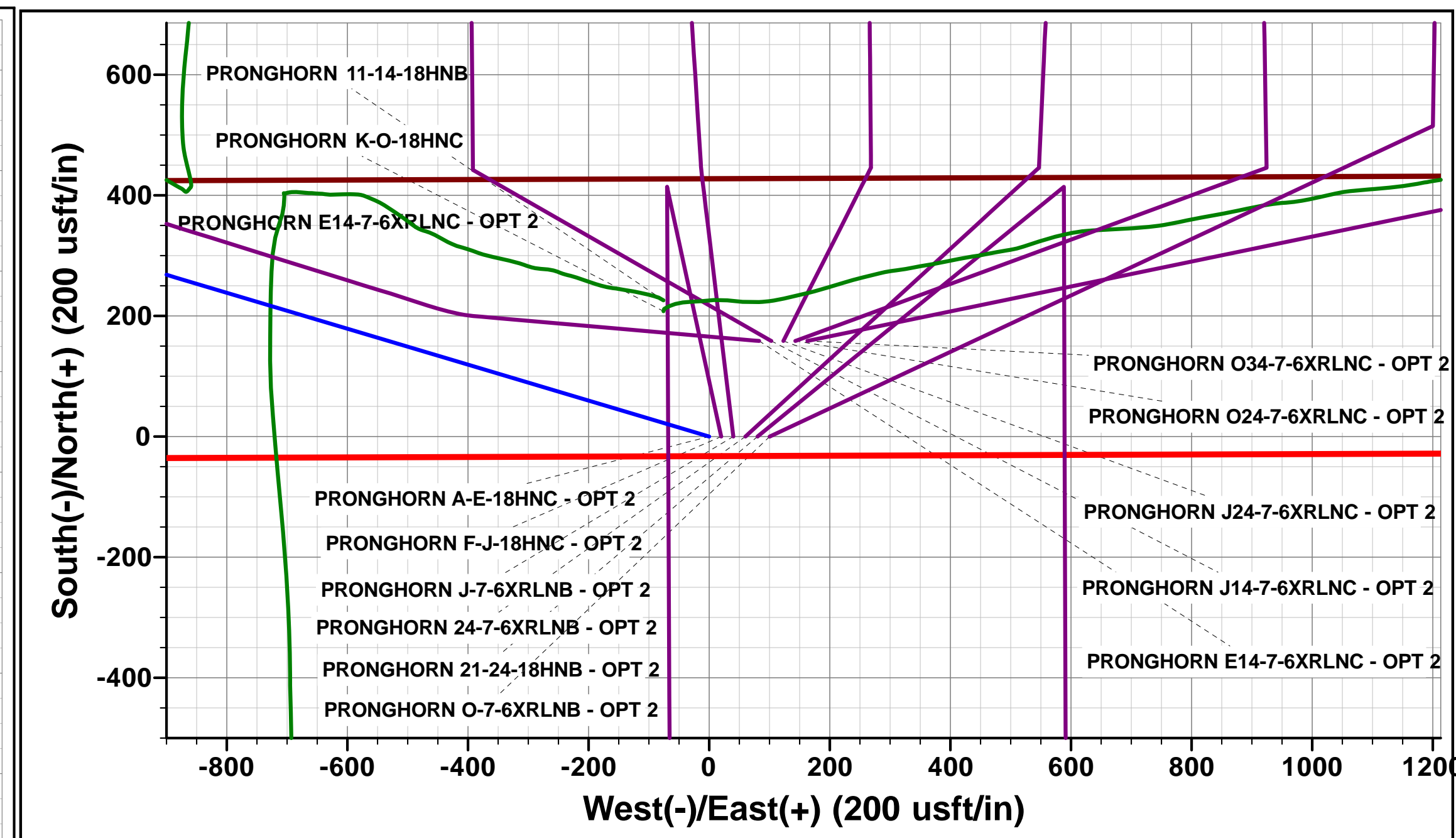
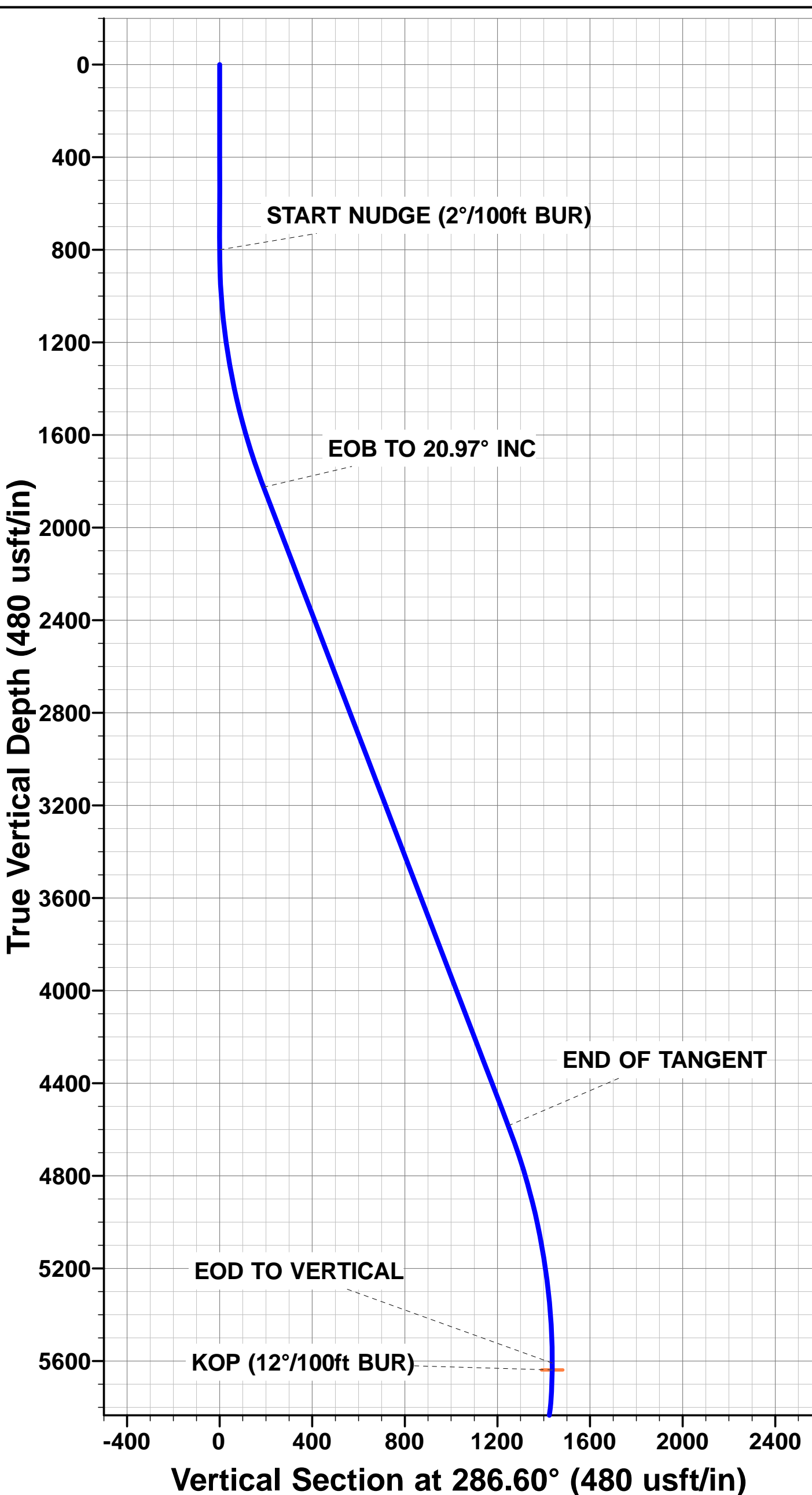
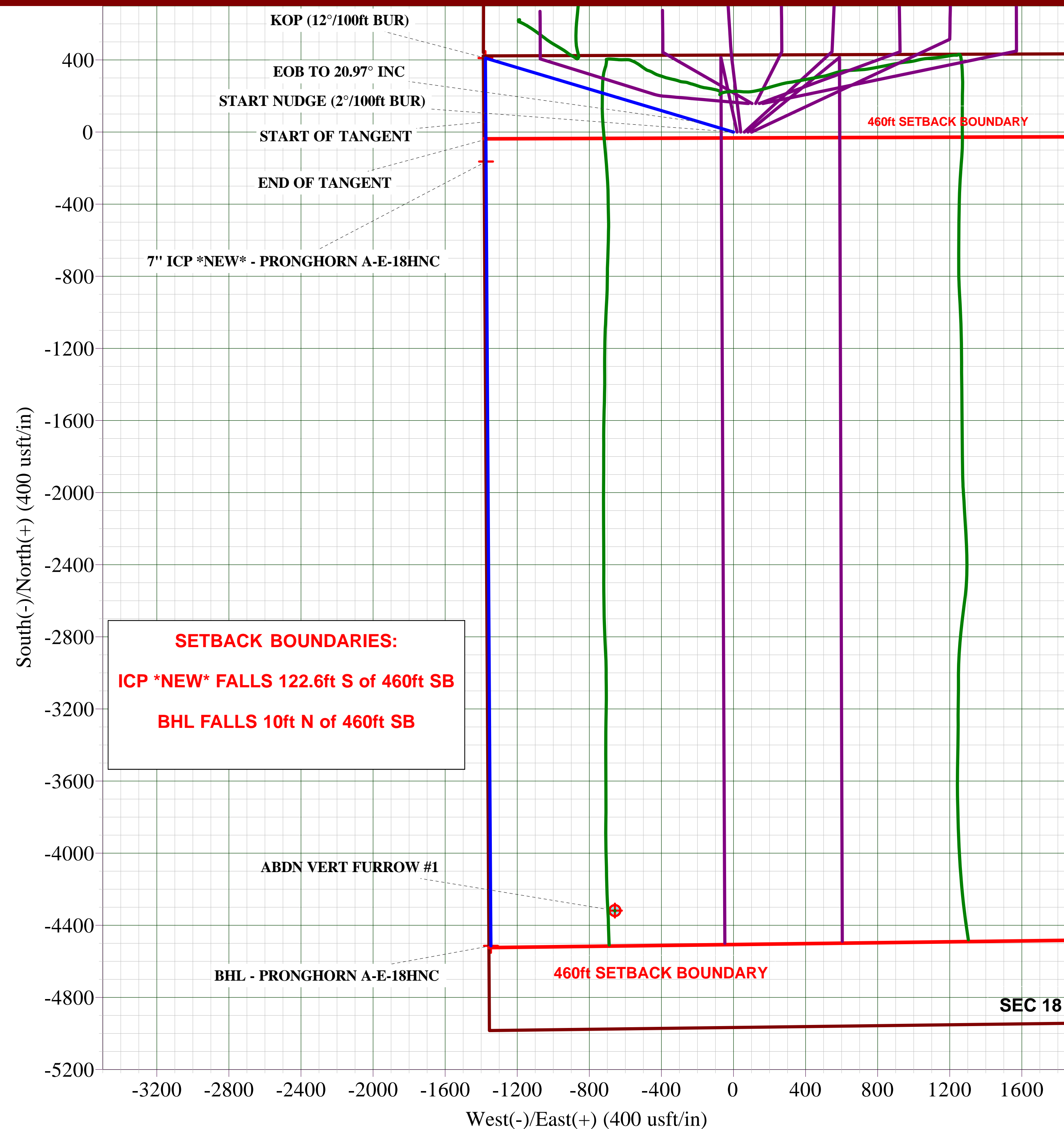
SHL: 428ft FNL & 1385ft FWL Sec 18

7" ICP *NEW*: 582.6ft FNL & 10ft FWL Sec 18

BHL: 470ft FSL & 10ft FWL Sec 18

WELLBORE TARGET DETAILS (LAT/LONG)

Name	TVD	+N/-S	+E/-W	Latitude	Longitude
KOP - PRONGHORN A-E-18HNC	5638.7	410.4	-1376.7	40.408456	-104.261862
7" ICP *NEW* - PRONGHORN A-E-18HNC	6142.0	-163.6	-1373.1	40.406881	-104.261848
BHL - PRONGHORN A-E-18HNC	6142.0	-4513.8	-1345.9	40.394940	-104.261750





Database:	EDM 5000.1 Single User Db	Local Co-ordinate Reference:	Well PRONGHORN A-E-18HNC - OPT 2
Company:	BONANZA CREEK ENERGY INC.	TVD Reference:	KB-EST @ 4582.0usft (Original Well Elev)
Project:	WELD COUNTY, COLORADO (NAD 83)	MD Reference:	KB-EST @ 4582.0usft (Original Well Elev)
Site:	NE NW SEC. 18 T5N R61W 6th P.M.	North Reference:	True
Well:	PRONGHORN A-E-18HNC - OPT 2	Survey Calculation Method:	Minimum Curvature
Wellbore:	OPTION 2		
Design:	PROPOSAL #2		

Project	WELD COUNTY, COLORADO (NAD 83)		
Map System:	US State Plane 1983	System Datum:	Mean Sea Level
Geo Datum:	North American Datum 1983		
Map Zone:	Colorado Northern Zone		Using geodetic scale factor

Site	NE NW SEC. 18 T5N R61W 6th P.M.				
Site Position:		Northing:	1,393,885.48 usft	Latitude:	40.407960
From:	Lat/Long	Easting:	3,346,083.48 usft	Longitude:	-104.257190
Position Uncertainty:	0.0 usft	Slot Radius:	1.10000ft	Grid Convergence:	0.80 °

Well	PRONGHORN A-E-18HNC - OPT 2					
Well Position	+N-S	-229.5 usft	Northing:	1,393,657.05 usft	Latitude:	40.407330
	+E-W	75.7 usft	Easting:	3,346,162.44 usft	Longitude:	-104.256918
Position Uncertainty		0.0 usft	Wellhead Elevation:	usft	Ground Level:	4,565.0 usft

Wellbore	OPTION 2				
Magnetics	Model Name	Sample Date	Declination (°)	Dip Angle (°)	Field Strength (nT)
	IGRF2015	09/11/2015	8.11	66.98	52,634

Design	PROPOSAL #2			
Audit Notes:				
Version:	Phase:	PROTOTYPE	Tie On Depth:	0.0
Vertical Section:	Depth From (TVD) (usft)	+N-S (usft)	+E-W (usft)	Direction (°)
	0.0	0.0	0.0	196.60

Plan Sections											
MD (usft)	Inc (°)	Azi (°)	Vertical Depth	SS (usft)	+N-S (usft)	+E-W (usft)	Dogleg Rate (°/100usf)	Build Rate (°/100usf)	Turn Rate (°/100usf)	TFO (°)	Target
0.0	0.00	0.00	0.0	-4,582.0	0.0	0.0	0.00	0.00	0.00	0.00	
800.0	0.00	0.00	800.0	-3,782.0	0.0	0.0	0.00	0.00	0.00	0.00	
1,848.5	20.97	286.60	1,825.2	-2,756.8	54.2	-181.8	2.00	2.00	0.00	286.60	
4,802.4	20.97	286.60	4,583.5	1.5	356.2	-1,194.9	0.00	0.00	0.00	0.00	
5,850.8	0.00	0.00	5,608.7	1,026.7	410.4	-1,376.7	2.00	-2.00	0.00	180.00	
5,880.8	0.00	0.00	5,638.7	1,056.7	410.4	-1,376.7	0.00	0.00	0.00	0.00	KOP - PRONGHOF
6,505.8	75.00	179.64	6,099.9	1,517.9	56.5	-1,374.5	12.00	12.00	0.00	179.64	
6,605.8	75.00	179.64	6,125.8	1,543.8	-40.1	-1,373.9	0.00	0.00	0.00	0.00	
6,730.8	90.00	179.64	6,142.0	1,560.0	-163.6	-1,373.1	12.00	12.00	0.00	0.00	
11,081.1	90.00	179.64	6,142.0	1,560.0	-4,513.8	-1,345.9	0.00	0.00	0.00	72.09	BHL - PRONGHOR



Database:	EDM 5000.1 Single User Db	Local Co-ordinate Reference:	Well PRONGHORN A-E-18HNC - OPT 2
Company:	BONANZA CREEK ENERGY INC.	TVD Reference:	KB-EST @ 4582.0usft (Original Well Elev)
Project:	WELD COUNTY, COLORADO (NAD 83)	MD Reference:	KB-EST @ 4582.0usft (Original Well Elev)
Site:	NE NW SEC. 18 T5N R61W 6th P.M.	North Reference:	True
Well:	PRONGHORN A-E-18HNC - OPT 2	Survey Calculation Method:	Minimum Curvature
Wellbore:	OPTION 2		
Design:	PROPOSAL #2		

Planned Survey										
MD (usft)	Inc (°)	Azi (°)	TVD (usft)	SS (usft)	+N/-S (usft)	+E/-W (usft)	Vertical Section (usft)	Dogleg Rate (°/100usft)	Build Rate (°/100usft)	Turn Rate (°/100usft)
0.0	0.00	0.00	0.0	4,582.00	0.0	0.0	0.0	0.00	0.00	0.00
100.0	0.00	0.00	100.0	4,482.00	0.0	0.0	0.0	0.00	0.00	0.00
200.0	0.00	0.00	200.0	4,382.00	0.0	0.0	0.0	0.00	0.00	0.00
300.0	0.00	0.00	300.0	4,282.00	0.0	0.0	0.0	0.00	0.00	0.00
400.0	0.00	0.00	400.0	4,182.00	0.0	0.0	0.0	0.00	0.00	0.00
500.0	0.00	0.00	500.0	4,082.00	0.0	0.0	0.0	0.00	0.00	0.00
600.0	0.00	0.00	600.0	3,982.00	0.0	0.0	0.0	0.00	0.00	0.00
700.0	0.00	0.00	700.0	3,882.00	0.0	0.0	0.0	0.00	0.00	0.00
START NUDDGE (2°/100ft BUR)										
800.0	0.00	0.00	800.0	3,782.00	0.0	0.0	0.0	0.00	0.00	0.00
900.0	2.00	286.60	900.0	3,682.02	0.5	-1.7	0.0	2.00	2.00	0.00
1,000.0	4.00	286.60	999.8	3,582.16	2.0	-6.7	0.0	2.00	2.00	0.00
1,100.0	6.00	286.60	1,099.5	3,482.55	4.5	-15.0	0.0	2.00	2.00	0.00
1,200.0	8.00	286.60	1,198.7	3,383.30	8.0	-26.7	0.0	2.00	2.00	0.00
1,300.0	10.00	286.60	1,297.5	3,284.53	12.4	-41.7	0.0	2.00	2.00	0.00
1,400.0	12.00	286.60	1,395.6	3,186.38	17.9	-60.0	0.0	2.00	2.00	0.00
1,500.0	14.00	286.60	1,493.1	3,088.94	24.3	-81.5	0.0	2.00	2.00	0.00
1,600.0	16.00	286.60	1,589.6	2,992.36	31.7	-106.4	0.0	2.00	2.00	0.00
1,700.0	18.00	286.60	1,685.3	2,896.73	40.1	-134.4	0.0	2.00	2.00	0.00
1,800.0	20.00	286.60	1,779.8	2,802.18	49.4	-165.6	0.0	2.00	2.00	0.00
EOB TO 20.97° INC										
1,848.5	20.97	286.60	1,825.2	2,756.76	54.2	-181.8	0.0	2.00	2.00	0.00
1,900.0	20.97	286.60	1,873.3	2,708.66	59.5	-199.5	0.0	0.00	0.00	0.00
2,000.0	20.97	286.60	1,966.7	2,615.29	69.7	-233.8	0.0	0.00	0.00	0.00
2,100.0	20.97	286.60	2,060.1	2,521.91	79.9	-268.1	0.0	0.00	0.00	0.00
2,200.0	20.97	286.60	2,153.5	2,428.53	90.1	-302.4	0.0	0.00	0.00	0.00
2,300.0	20.97	286.60	2,246.8	2,335.15	100.4	-336.7	0.0	0.00	0.00	0.00
2,400.0	20.97	286.60	2,340.2	2,241.78	110.6	-371.0	0.0	0.00	0.00	0.00
2,500.0	20.97	286.60	2,433.6	2,148.40	120.8	-405.3	0.0	0.00	0.00	0.00
2,600.0	20.97	286.60	2,527.0	2,055.02	131.0	-439.6	0.0	0.00	0.00	0.00
2,700.0	20.97	286.60	2,620.4	1,961.65	141.3	-473.9	0.0	0.00	0.00	0.00
2,800.0	20.97	286.60	2,713.7	1,868.27	151.5	-508.2	0.0	0.00	0.00	0.00
2,900.0	20.97	286.60	2,807.1	1,774.89	161.7	-542.5	0.0	0.00	0.00	0.00
3,000.0	20.97	286.60	2,900.5	1,681.52	171.9	-576.8	0.0	0.00	0.00	0.00
3,100.0	20.97	286.60	2,993.9	1,588.14	182.2	-611.0	0.0	0.00	0.00	0.00
3,200.0	20.97	286.60	3,087.2	1,494.76	192.4	-645.3	0.0	0.00	0.00	0.00
3,300.0	20.97	286.60	3,180.6	1,401.39	202.6	-679.6	0.0	0.00	0.00	0.00
3,400.0	20.97	286.60	3,274.0	1,308.01	212.8	-713.9	0.0	0.00	0.00	0.00
3,500.0	20.97	286.60	3,367.4	1,214.63	223.1	-748.2	0.0	0.00	0.00	0.00
3,600.0	20.97	286.60	3,460.7	1,121.25	233.3	-782.5	0.0	0.00	0.00	0.00
3,700.0	20.97	286.60	3,554.1	1,027.88	243.5	-816.8	0.1	0.00	0.00	0.00
3,800.0	20.97	286.60	3,647.5	934.50	253.7	-851.1	0.1	0.00	0.00	0.00
3,900.0	20.97	286.60	3,740.9	841.12	264.0	-885.4	0.1	0.00	0.00	0.00
4,000.0	20.97	286.60	3,834.3	747.75	274.2	-919.7	0.1	0.00	0.00	0.00
4,100.0	20.97	286.60	3,927.6	654.37	284.4	-954.0	0.1	0.00	0.00	0.00
4,200.0	20.97	286.60	4,021.0	560.99	294.6	-988.3	0.1	0.00	0.00	0.00
4,300.0	20.97	286.60	4,114.4	467.62	304.9	-1,022.6	0.1	0.00	0.00	0.00
4,400.0	20.97	286.60	4,207.8	374.24	315.1	-1,056.9	0.1	0.00	0.00	0.00
4,500.0	20.97	286.60	4,301.1	280.86	325.3	-1,091.2	0.1	0.00	0.00	0.00
4,600.0	20.97	286.60	4,394.5	187.48	335.5	-1,125.5	0.1	0.00	0.00	0.00
4,700.0	20.97	286.60	4,487.9	94.11	345.7	-1,159.8	0.1	0.00	0.00	0.00
4,800.0	20.97	286.60	4,581.3	0.73	356.0	-1,194.1	0.1	0.00	0.00	0.00
END OF TANGENT										



Database:	EDM 5000.1 Single User Db	Local Co-ordinate Reference:	Well PRONGHORN A-E-18HNC - OPT 2
Company:	BONANZA CREEK ENERGY INC.	TVD Reference:	KB-EST @ 4582.0usft (Original Well Elev)
Project:	WELD COUNTY, COLORADO (NAD 83)	MD Reference:	KB-EST @ 4582.0usft (Original Well Elev)
Site:	NE NW SEC. 18 T5N R61W 6th P.M.	North Reference:	True
Well:	PRONGHORN A-E-18HNC - OPT 2	Survey Calculation Method:	Minimum Curvature
Wellbore:	OPTION 2		
Design:	PROPOSAL #2		

Planned Survey										
MD (usft)	Inc (°)	Azi (°)	TVD (usft)	SS (usft)	+N/-S (usft)	+E/-W (usft)	Vertical Section (usft)	Dogleg Rate (°/100usft)	Build Rate (°/100usft)	Turn Rate (°/100usft)
4,802.4	20.97	286.60	4,583.5	-1.46	356.2	-1,194.9	0.1	0.00	0.00	0.00
4,900.0	19.02	286.60	4,675.2	-93.22	365.8	-1,226.9	0.1	2.00	-2.00	0.00
5,000.0	17.02	286.60	4,770.3	-188.32	374.6	-1,256.5	0.1	2.00	-2.00	0.00
5,100.0	15.02	286.60	4,866.4	-284.43	382.5	-1,283.0	0.1	2.00	-2.00	0.00
5,200.0	13.02	286.60	4,963.4	-381.45	389.4	-1,306.2	0.1	2.00	-2.00	0.00
5,300.0	11.02	286.60	5,061.3	-479.25	395.3	-1,326.1	0.1	2.00	-2.00	0.00
5,400.0	9.02	286.60	5,159.7	-577.72	400.3	-1,342.8	0.1	2.00	-2.00	0.00
5,500.0	7.02	286.60	5,258.7	-676.74	404.3	-1,356.1	0.1	2.00	-2.00	0.00
5,600.0	5.02	286.60	5,358.2	-776.18	407.3	-1,366.2	0.1	2.00	-2.00	0.00
5,700.0	3.02	286.60	5,457.9	-875.93	409.3	-1,372.9	0.1	2.00	-2.00	0.00
5,800.0	1.02	286.60	5,557.9	-975.87	410.3	-1,376.3	0.1	2.00	-2.00	0.00
EOD TO VERTICAL										
5,850.8	0.00	0.00	5,608.7	-1,026.70	410.4	-1,376.7	0.1	2.00	-2.00	0.00
KOP (12°/100ft BUR)										
5,880.8	0.00	0.00	5,638.7	-1,056.70	410.4	-1,376.7	0.1	0.00	0.00	0.00
5,900.0	2.30	179.64	5,657.9	-1,075.86	410.0	-1,376.7	0.5	12.00	12.00	0.00
6,000.0	14.30	179.64	5,756.6	-1,174.63	395.6	-1,376.6	14.2	12.00	12.00	0.00
6,100.0	26.30	179.64	5,850.2	-1,268.25	361.0	-1,376.4	47.4	12.00	12.00	0.00
6,200.0	38.30	179.64	5,934.6	-1,352.62	307.7	-1,376.1	98.4	12.00	12.00	0.00
6,300.0	50.30	179.64	6,006.1	-1,424.06	237.9	-1,375.6	165.1	12.00	12.00	0.00
6,400.0	62.30	179.64	6,061.4	-1,479.44	154.9	-1,375.1	244.5	12.00	12.00	0.00
6,500.0	74.30	179.64	6,098.4	-1,516.35	62.2	-1,374.5	333.2	12.00	12.00	0.00
START OF TANGENT										
6,505.8	75.00	179.64	6,099.9	-1,517.90	56.5	-1,374.5	338.6	12.00	12.00	0.00
6,600.0	75.00	179.64	6,124.3	-1,542.27	-34.4	-1,373.9	425.6	0.00	0.00	0.00
END OF TANGENT										
6,605.8	75.00	179.64	6,125.8	-1,543.78	-40.1	-1,373.9	431.0	0.00	0.00	0.00
6,700.0	86.30	179.64	6,141.1	-1,559.05	-132.8	-1,373.3	519.7	12.00	12.00	0.00
7" ICP *NEW* - PRONGHORN A-E-18HNC										
6,730.8	90.00	179.64	6,142.0	-1,560.05	-163.6	-1,373.1	549.2	12.00	12.00	0.00
6,800.0	90.00	179.64	6,142.0	-1,560.05	-232.8	-1,372.7	615.3	0.00	0.00	0.00
6,900.0	90.00	179.64	6,142.0	-1,560.05	-332.8	-1,372.0	711.0	0.00	0.00	0.00
7,000.0	90.00	179.64	6,142.0	-1,560.05	-432.8	-1,371.4	806.6	0.00	0.00	0.00
7,100.0	90.00	179.64	6,142.0	-1,560.05	-532.8	-1,370.8	902.3	0.00	0.00	0.00
7,200.0	90.00	179.64	6,142.0	-1,560.05	-632.8	-1,370.2	997.9	0.00	0.00	0.00
7,300.0	90.00	179.64	6,142.0	-1,560.05	-732.8	-1,369.5	1,093.6	0.00	0.00	0.00
7,400.0	90.00	179.64	6,142.0	-1,560.05	-832.8	-1,368.9	1,189.2	0.00	0.00	0.00
7,500.0	90.00	179.64	6,142.0	-1,560.05	-932.8	-1,368.3	1,284.9	0.00	0.00	0.00
7,600.0	90.00	179.64	6,142.0	-1,560.04	-1,032.8	-1,367.6	1,380.5	0.00	0.00	0.00
7,700.0	90.00	179.64	6,142.0	-1,560.04	-1,132.8	-1,367.0	1,476.2	0.00	0.00	0.00
7,800.0	90.00	179.64	6,142.0	-1,560.04	-1,232.8	-1,366.4	1,571.8	0.00	0.00	0.00
7,900.0	90.00	179.64	6,142.0	-1,560.04	-1,332.8	-1,365.8	1,667.5	0.00	0.00	0.00
8,000.0	90.00	179.64	6,142.0	-1,560.04	-1,432.8	-1,365.1	1,763.1	0.00	0.00	0.00
8,100.0	90.00	179.64	6,142.0	-1,560.04	-1,532.8	-1,364.5	1,858.8	0.00	0.00	0.00
8,200.0	90.00	179.64	6,142.0	-1,560.04	-1,632.8	-1,363.9	1,954.4	0.00	0.00	0.00
8,300.0	90.00	179.64	6,142.0	-1,560.04	-1,732.8	-1,363.3	2,050.1	0.00	0.00	0.00
8,400.0	90.00	179.64	6,142.0	-1,560.04	-1,832.8	-1,362.6	2,145.7	0.00	0.00	0.00
8,500.0	90.00	179.64	6,142.0	-1,560.04	-1,932.8	-1,362.0	2,241.4	0.00	0.00	0.00
8,600.0	90.00	179.64	6,142.0	-1,560.04	-2,032.8	-1,361.4	2,337.0	0.00	0.00	0.00
8,700.0	90.00	179.64	6,142.0	-1,560.04	-2,132.8	-1,360.8	2,432.7	0.00	0.00	0.00
8,800.0	90.00	179.64	6,142.0	-1,560.04	-2,232.7	-1,360.1	2,528.3	0.00	0.00	0.00
8,900.0	90.00	179.64	6,142.0	-1,560.04	-2,332.7	-1,359.5	2,624.0	0.00	0.00	0.00
9,000.0	90.00	179.64	6,142.0	-1,560.03	-2,432.7	-1,358.9	2,719.6	0.00	0.00	0.00
9,100.0	90.00	179.64	6,142.0	-1,560.03	-2,532.7	-1,358.3	2,815.3	0.00	0.00	0.00



Database:	EDM 5000.1 Single User Db	Local Co-ordinate Reference:	Well PRONGHORN A-E-18HNC - OPT 2
Company:	BONANZA CREEK ENERGY INC.	TVD Reference:	KB-EST @ 4582.0usft (Original Well Elev)
Project:	WELD COUNTY, COLORADO (NAD 83)	MD Reference:	KB-EST @ 4582.0usft (Original Well Elev)
Site:	NE NW SEC. 18 T5N R61W 6th P.M.	North Reference:	True
Well:	PRONGHORN A-E-18HNC - OPT 2	Survey Calculation Method:	Minimum Curvature
Wellbore:	OPTION 2		
Design:	PROPOSAL #2		

Planned Survey										
MD (usft)	Inc (°)	Azi (°)	TVD (usft)	SS (usft)	+N/-S (usft)	+E/-W (usft)	Vertical Section (usft)	Dogleg Rate (°/100usft)	Build Rate (°/100usft)	Turn Rate (°/100usft)
9,200.0	90.00	179.64	6,142.0	-1,560.03	-2,632.7	-1,357.6	2,910.9	0.00	0.00	0.00
9,300.0	90.00	179.64	6,142.0	-1,560.03	-2,732.7	-1,357.0	3,006.6	0.00	0.00	0.00
9,400.0	90.00	179.64	6,142.0	-1,560.03	-2,832.7	-1,356.4	3,102.2	0.00	0.00	0.00
9,500.0	90.00	179.64	6,142.0	-1,560.03	-2,932.7	-1,355.8	3,197.9	0.00	0.00	0.00
9,600.0	90.00	179.64	6,142.0	-1,560.03	-3,032.7	-1,355.1	3,293.5	0.00	0.00	0.00
9,700.0	90.00	179.64	6,142.0	-1,560.02	-3,132.7	-1,354.5	3,389.2	0.00	0.00	0.00
9,800.0	90.00	179.64	6,142.0	-1,560.02	-3,232.7	-1,353.9	3,484.8	0.00	0.00	0.00
9,900.0	90.00	179.64	6,142.0	-1,560.02	-3,332.7	-1,353.3	3,580.5	0.00	0.00	0.00
10,000.0	90.00	179.64	6,142.0	-1,560.02	-3,432.7	-1,352.6	3,676.1	0.00	0.00	0.00
10,100.0	90.00	179.64	6,142.0	-1,560.02	-3,532.7	-1,352.0	3,771.8	0.00	0.00	0.00
10,200.0	90.00	179.64	6,142.0	-1,560.02	-3,632.7	-1,351.4	3,867.4	0.00	0.00	0.00
10,300.0	90.00	179.64	6,142.0	-1,560.02	-3,732.7	-1,350.8	3,963.1	0.00	0.00	0.00
10,400.0	90.00	179.64	6,142.0	-1,560.01	-3,832.7	-1,350.2	4,058.7	0.00	0.00	0.00
10,500.0	90.00	179.64	6,142.0	-1,560.01	-3,932.7	-1,349.5	4,154.4	0.00	0.00	0.00
10,600.0	90.00	179.64	6,142.0	-1,560.01	-4,032.7	-1,348.9	4,250.0	0.00	0.00	0.00
10,700.0	90.00	179.64	6,142.0	-1,560.01	-4,132.7	-1,348.3	4,345.7	0.00	0.00	0.00
10,800.0	90.00	179.64	6,142.0	-1,560.01	-4,232.7	-1,347.7	4,441.3	0.00	0.00	0.00
10,900.0	90.00	179.64	6,142.0	-1,560.00	-4,332.7	-1,347.0	4,537.0	0.00	0.00	0.00
11,000.0	90.00	179.64	6,142.0	-1,560.00	-4,432.7	-1,346.4	4,632.6	0.00	0.00	0.00
BHL - PRONGHORN A-E-18HNC										
11,081.1	90.00	179.64	6,142.0	-1,560.00	-4,513.8	-1,345.9	4,710.2	0.00	0.00	0.00

Plan Annotations					
MD (usft)	TVD (usft)	Local Coordinates		Comment	
		+N/-S (usft)	+E/-W (usft)		
800.0	800.0	0.0	0.0	START NUDGE (2°/100ft BUR)	
1,848.5	1,825.2	54.2	-181.8	EOB TO 20.97° INC	
4,802.4	4,583.5	356.2	-1,194.9	END OF TANGENT	
5,850.8	5,608.7	410.4	-1,376.7	EOD TO VERTICAL	
5,880.8	5,638.7	410.4	-1,376.7	KOP (12°/100ft BUR)	
6,505.8	6,099.9	56.5	-1,374.5	START OF TANGENT	
6,605.8	6,125.8	-40.1	-1,373.9	END OF TANGENT	
6,730.8	6,142.0	-163.6	-1,373.1	7" ICP *NEW* - PRONGHORN A-E-18HNC	
11,081.1	6,142.0	-4,513.8	-1,345.9	BHL - PRONGHORN A-E-18HNC	