

BONANZA CREEK ENERGY INC.

WELD COUNTY, COLORADO (NAD 83)

NE NW SEC. 18 T5N R61W 6th P.M.

PRONGHORN F-J-18HNC - OPT 2

OPTION 2

09 November, 2015

Plan: PROPOSAL #2





Project: WELD COUNTY, COLORADO (NAD 83)
 Site: NE NW SEC. 18 T5N R61W 6th P.M.
 Well: PRONGHORN F-J-18HNC - OPT 2
 Wellbore: OPTION 2
 Design: PROPOSAL #2

ANNOTATIONS

TVD	MD	Inc	Azi	+N/-S	+E/-W	Vsect	Dep	Annotation
900.0	900.0	0.00	0.00	0.0	0.0	0.0	0.0	START NUDDGE (2°/100ft BUR)
1495.7	1500.1	12.00	347.77	61.2	-13.3	-61.0	62.6	EOB TO 12° INC
2899.0	2934.7	12.00	347.77	352.8	-76.5	-351.6	361.0	END OF TANGENT
3494.7	3534.8	0.00	0.00	414.0	-89.8	-412.6	423.6	EOD TO VERTICAL
5638.7	5678.8	0.00	0.00	414.0	-89.8	-412.6	423.6	KOP (12°/100ft BUR)
6099.9	6303.8	75.00	179.75	60.1	-88.2	-58.7	777.5	START OF TANGENT
6125.8	6403.8	75.00	179.75	-36.5	-87.8	37.8	874.1	END OF TANGENT
6142.0	6528.8	90.00	179.75	-160.1	-87.3	161.4	997.6	7" ICP *NEW* - PRONGHORN F-J-18HNC
6142.0	10868.0	90.00	179.74	-4499.2	-68.0	4499.8	5336.8	BHL - PRONGHORN F-J-18HNC

PROPOSED LOCAL COORDINATES:

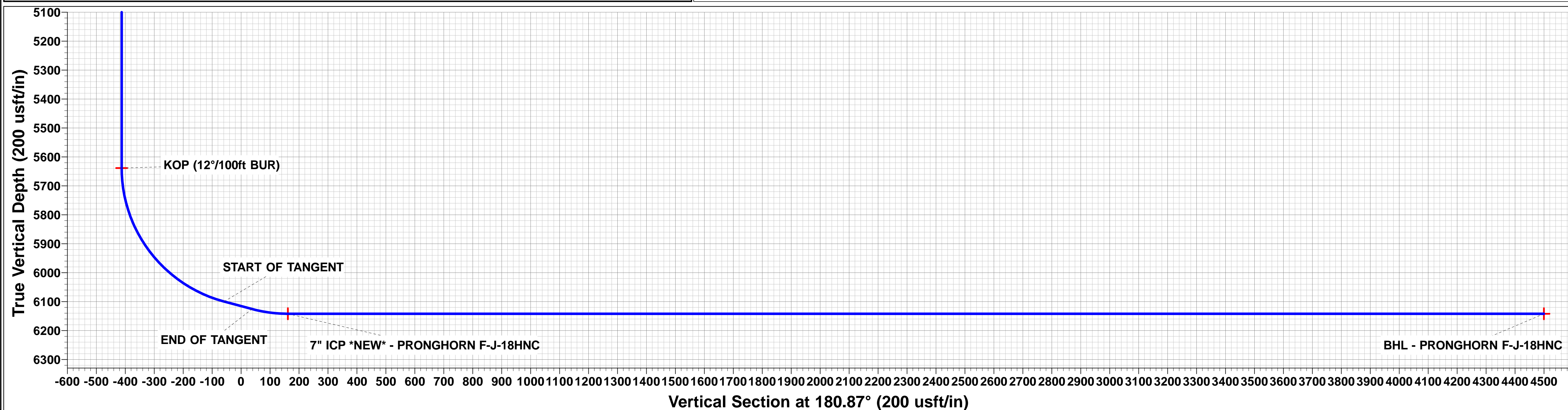
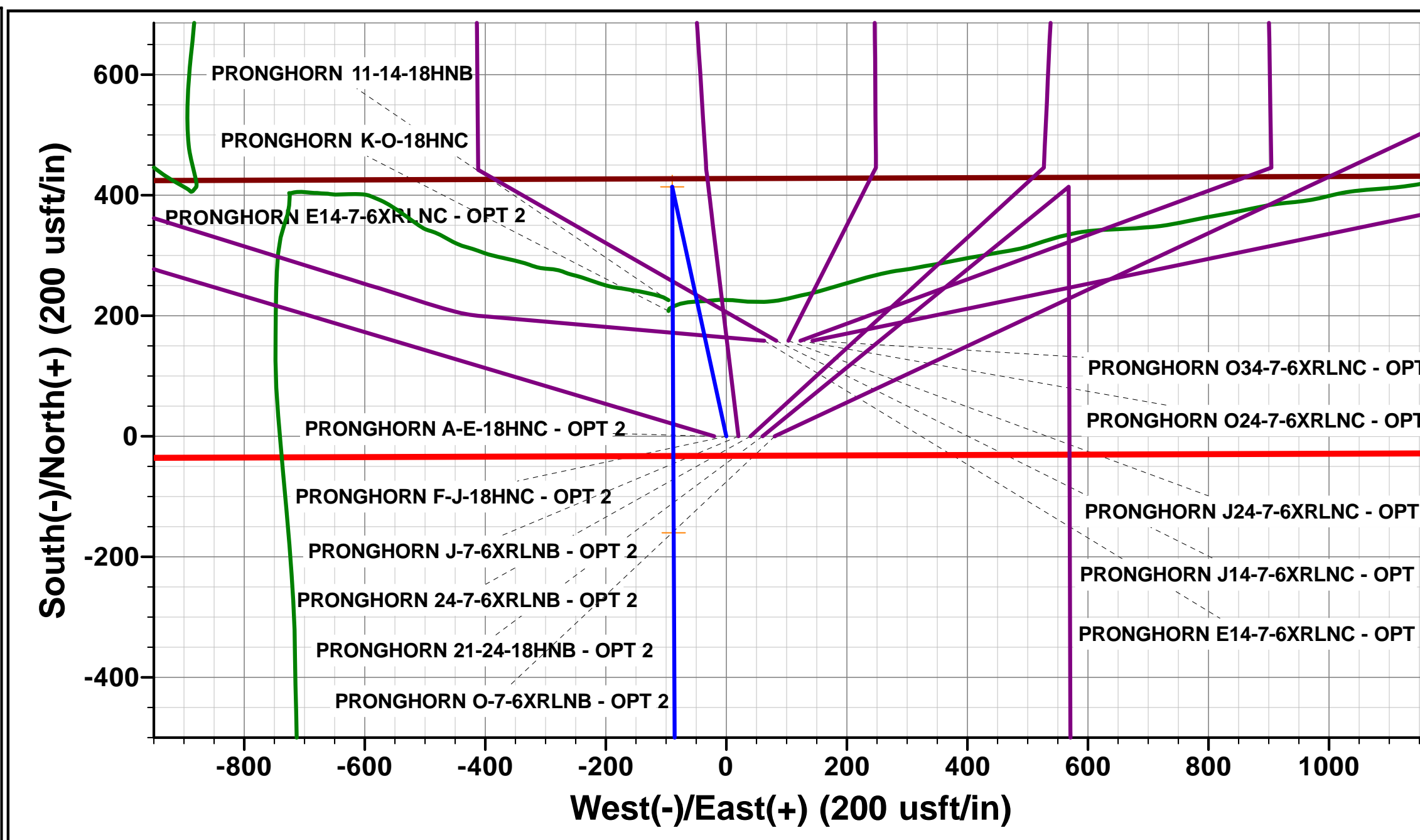
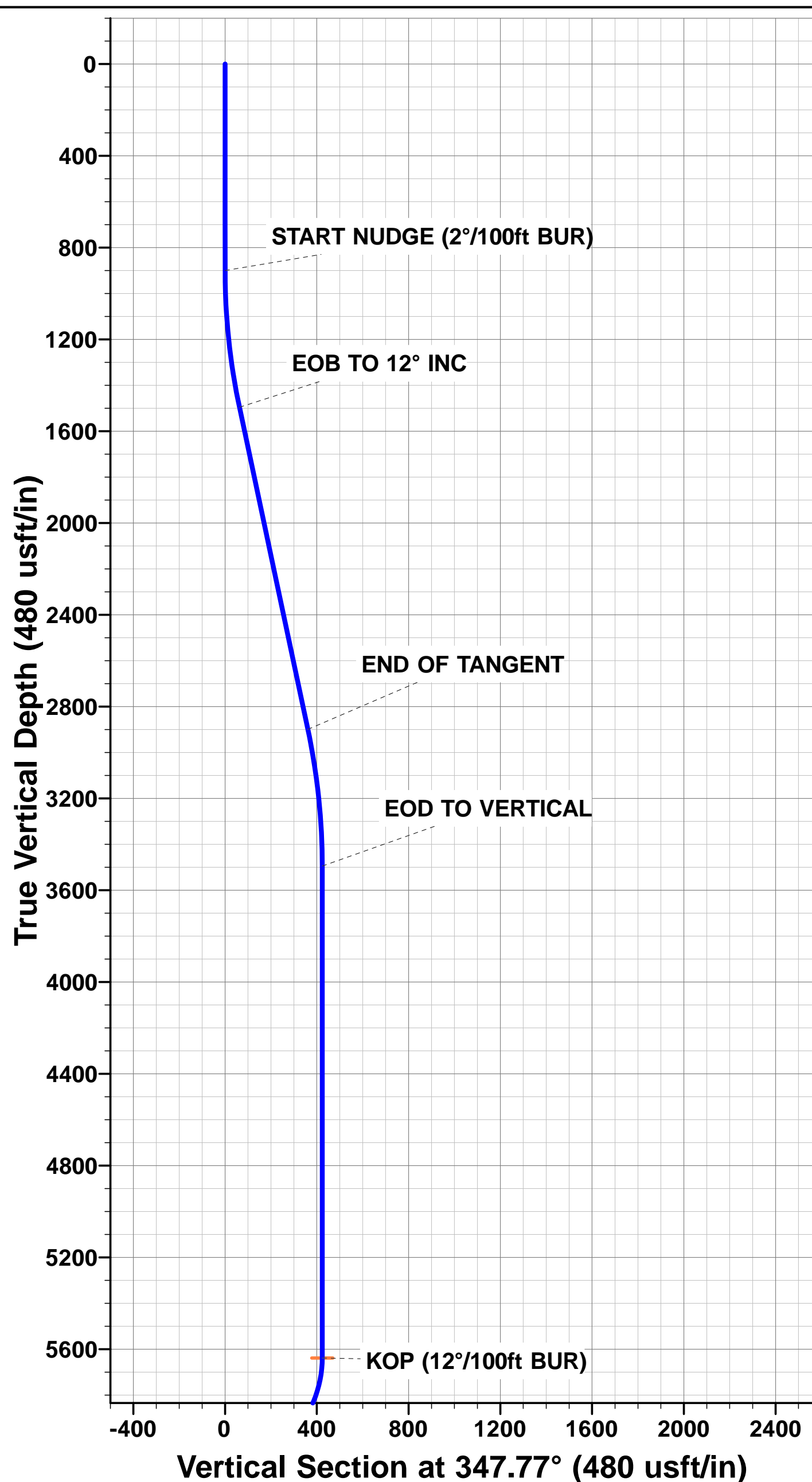
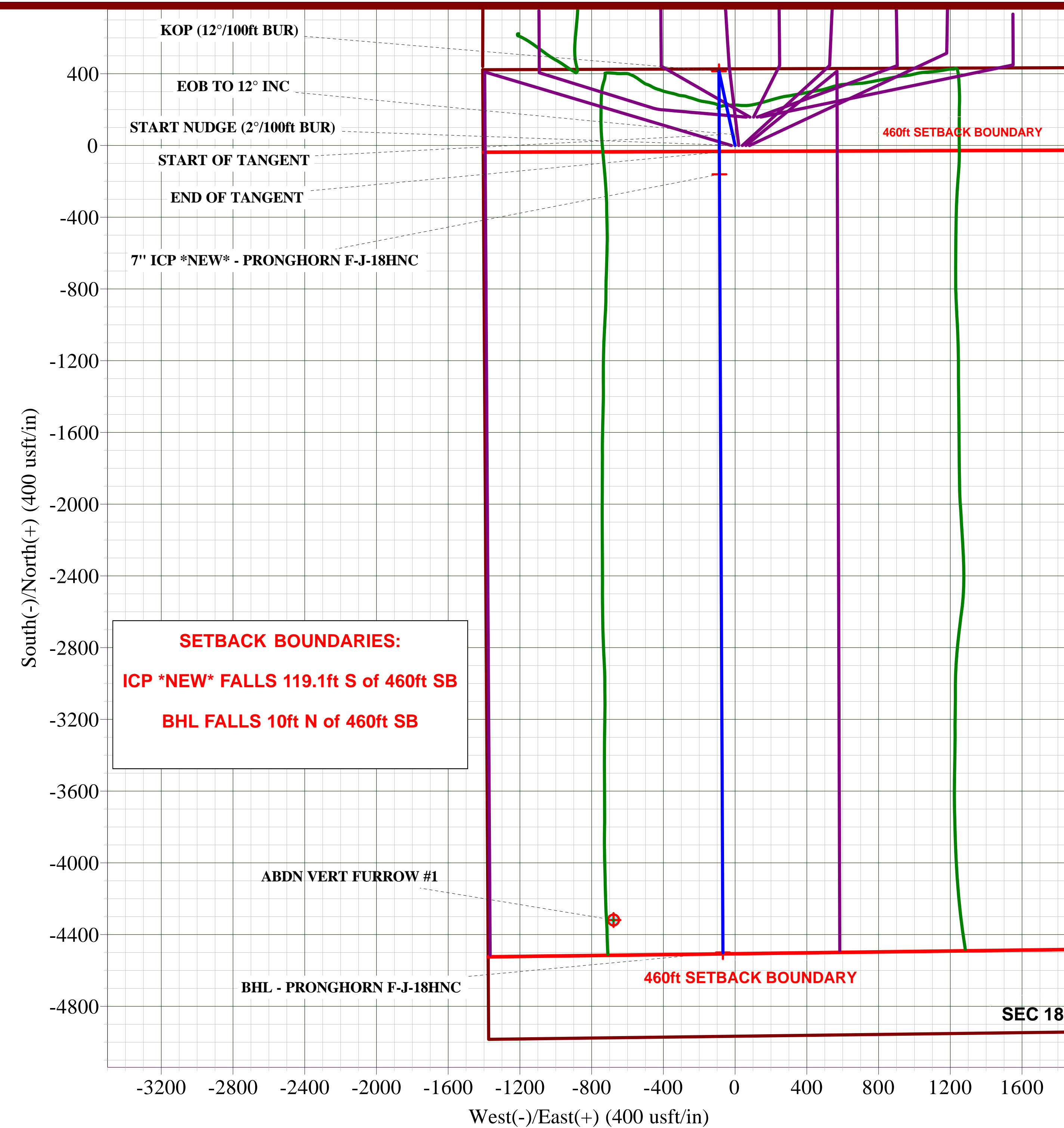
SHL: 428ft FNL & 1405ft FWL Sec 18

7" ICP *NEW*: 579.1ft FNL & 1317ft FWL Sec 18

BHL: 470ft FSL & 1310ft FWL Sec 18

WELLBORE TARGET DETAILS (LAT/LONG)

Name	TVD	+N/-S	+E/-W	Latitude	Longitude
KOP - PRONGHORN F-J-18HNC	5638.7	414.0	-89.8	40.408466	-104.257168
7" ICP *NEW* - PRONGHORN F-J-18HNC	6142.0	-160.1	-87.3	40.406890	-104.257159
BHL - PRONGHORN F-J-18HNC	6142.0	-4499.2	-68.0	40.394980	-104.257090





Database:	EDM 5000.1 Single User Db	Local Co-ordinate Reference:	Well PRONGHORN F-J-18HNC - OPT 2
Company:	BONANZA CREEK ENERGY INC.	TVD Reference:	KB-EST @ 4582.0usft (Original Well Elev)
Project:	WELD COUNTY, COLORADO (NAD 83)	MD Reference:	KB-EST @ 4582.0usft (Original Well Elev)
Site:	NE NW SEC. 18 T5N R61W 6th P.M.	North Reference:	True
Well:	PRONGHORN F-J-18HNC - OPT 2	Survey Calculation Method:	Minimum Curvature
Wellbore:	OPTION 2		
Design:	PROPOSAL #2		

Project	WELD COUNTY, COLORADO (NAD 83)		
Map System:	US State Plane 1983	System Datum:	Mean Sea Level
Geo Datum:	North American Datum 1983		
Map Zone:	Colorado Northern Zone		Using geodetic scale factor

Site	NE NW SEC. 18 T5N R61W 6th P.M.				
Site Position:		Northing:	1,393,885.48 usft	Latitude:	40.407960
From:	Lat/Long	Easting:	3,346,083.48 usft	Longitude:	-104.257190
Position Uncertainty:	0.0 usft	Slot Radius:	1.10000ft	Grid Convergence:	0.80 °

Well	PRONGHORN F-J-18HNC - OPT 2					
Well Position	+N-S	-229.5 usft	Northing:	1,393,657.33 usft	Latitude:	40.407330
	+E-W	95.8 usft	Easting:	3,346,182.49 usft	Longitude:	-104.256846
Position Uncertainty		0.0 usft	Wellhead Elevation:	usft	Ground Level:	4,565.0 usft

Wellbore	OPTION 2				
Magnetics	Model Name	Sample Date	Declination (°)	Dip Angle (°)	Field Strength (nT)
	IGRF2015	09/11/2015	8.11	66.98	52,634

Design	PROPOSAL #2			
Audit Notes:				
Version:	Phase:	PROTOTYPE	Tie On Depth:	0.0
Vertical Section:	Depth From (TVD) (usft)	+N-S (usft)	+E-W (usft)	Direction (°)
	0.0	0.0	0.0	180.87

Plan Sections											
MD (usft)	Inc (°)	Azi (°)	Vertical Depth	SS (usft)	+N-S (usft)	+E-W (usft)	Dogleg Rate (°/100usf)	Build Rate (°/100usf)	Turn Rate (°/100usf)	TFO (°)	Target
0.0	0.00	0.00	0.0	-4,582.0	0.0	0.0	0.00	0.00	0.00	0.00	
900.0	0.00	0.00	900.0	-3,682.0	0.0	0.0	0.00	0.00	0.00	0.00	
1,500.1	12.00	347.77	1,495.7	-3,086.3	61.2	-13.3	2.00	2.00	0.00	347.77	
2,934.7	12.00	347.77	2,899.0	-1,683.0	352.8	-76.5	0.00	0.00	0.00	0.00	
3,534.8	0.00	0.00	3,494.7	-1,087.3	414.0	-89.8	2.00	-2.00	0.00	180.00	
5,678.8	0.00	0.00	5,638.7	1,056.7	414.0	-89.8	0.00	0.00	0.00	0.00	KOP - PRONGHOF
6,303.8	75.00	179.75	6,099.9	1,517.9	60.1	-88.2	12.00	12.00	0.00	179.75	
6,403.8	75.00	179.75	6,125.8	1,543.8	-36.5	-87.8	0.00	0.00	0.00	0.00	
6,528.8	90.00	179.75	6,142.0	1,560.0	-160.1	-87.3	12.00	12.00	0.00	0.00	
10,868.0	90.00	179.74	6,142.0	1,560.0	-4,499.2	-68.0	0.00	0.00	0.00	-82.60	BHL - PRONGHOR



Database:	EDM 5000.1 Single User Db	Local Co-ordinate Reference:	Well PRONGHORN F-J-18HNC - OPT 2
Company:	BONANZA CREEK ENERGY INC.	TVD Reference:	KB-EST @ 4582.0usft (Original Well Elev)
Project:	WELD COUNTY, COLORADO (NAD 83)	MD Reference:	KB-EST @ 4582.0usft (Original Well Elev)
Site:	NE NW SEC. 18 T5N R61W 6th P.M.	North Reference:	True
Well:	PRONGHORN F-J-18HNC - OPT 2	Survey Calculation Method:	Minimum Curvature
Wellbore:	OPTION 2		
Design:	PROPOSAL #2		

Planned Survey										
MD (usft)	Inc (°)	Azi (°)	TVD (usft)	SS (usft)	+N/-S (usft)	+E/-W (usft)	Vertical Section (usft)	Dogleg Rate (°/100usft)	Build Rate (°/100usft)	Turn Rate (°/100usft)
0.0	0.00	0.00	0.0	4,582.00	0.0	0.0	0.0	0.00	0.00	0.00
100.0	0.00	0.00	100.0	4,482.00	0.0	0.0	0.0	0.00	0.00	0.00
200.0	0.00	0.00	200.0	4,382.00	0.0	0.0	0.0	0.00	0.00	0.00
300.0	0.00	0.00	300.0	4,282.00	0.0	0.0	0.0	0.00	0.00	0.00
400.0	0.00	0.00	400.0	4,182.00	0.0	0.0	0.0	0.00	0.00	0.00
500.0	0.00	0.00	500.0	4,082.00	0.0	0.0	0.0	0.00	0.00	0.00
600.0	0.00	0.00	600.0	3,982.00	0.0	0.0	0.0	0.00	0.00	0.00
700.0	0.00	0.00	700.0	3,882.00	0.0	0.0	0.0	0.00	0.00	0.00
800.0	0.00	0.00	800.0	3,782.00	0.0	0.0	0.0	0.00	0.00	0.00
START NUDDGE (2°/100ft BUR)										
900.0	0.00	0.00	900.0	3,682.00	0.0	0.0	0.0	0.00	0.00	0.00
1,000.0	2.00	347.77	1,000.0	3,582.02	1.7	-0.4	-1.7	2.00	2.00	0.00
1,100.0	4.00	347.77	1,099.8	3,482.16	6.8	-1.5	-6.8	2.00	2.00	0.00
1,200.0	6.00	347.77	1,199.5	3,382.55	15.3	-3.3	-15.3	2.00	2.00	0.00
1,300.0	8.00	347.77	1,298.7	3,283.30	27.2	-5.9	-27.2	2.00	2.00	0.00
1,400.0	10.00	347.77	1,397.5	3,184.53	42.5	-9.2	-42.4	2.00	2.00	0.00
1,500.0	12.00	347.77	1,495.6	3,086.38	61.2	-13.3	-61.0	2.00	2.00	0.00
EOB TO 12° INC										
1,500.1	12.00	347.77	1,495.7	3,086.25	61.2	-13.3	-61.0	2.00	2.00	0.00
1,600.0	12.00	347.77	1,593.4	2,988.56	81.5	-17.7	-81.2	0.00	0.00	0.00
1,700.0	12.00	347.77	1,691.3	2,890.75	101.8	-22.1	-101.5	0.00	0.00	0.00
1,800.0	12.00	347.77	1,789.1	2,792.94	122.2	-26.5	-121.7	0.00	0.00	0.00
1,900.0	12.00	347.77	1,886.9	2,695.12	142.5	-30.9	-142.0	0.00	0.00	0.00
2,000.0	12.00	347.77	1,984.7	2,597.31	162.8	-35.3	-162.2	0.00	0.00	0.00
2,100.0	12.00	347.77	2,082.5	2,499.49	183.1	-39.7	-182.5	0.00	0.00	0.00
2,200.0	12.00	347.77	2,180.3	2,401.68	203.4	-44.1	-202.8	0.00	0.00	0.00
2,300.0	12.00	347.77	2,278.1	2,303.87	223.8	-48.5	-223.0	0.00	0.00	0.00
2,400.0	12.00	347.77	2,375.9	2,206.05	244.1	-52.9	-243.3	0.00	0.00	0.00
2,500.0	12.00	347.77	2,473.8	2,108.24	264.4	-57.3	-263.5	0.00	0.00	0.00
2,600.0	12.00	347.77	2,571.6	2,010.42	284.7	-61.7	-283.8	0.00	0.00	0.00
2,700.0	12.00	347.77	2,669.4	1,912.61	305.1	-66.1	-304.0	0.00	0.00	0.00
2,800.0	12.00	347.77	2,767.2	1,814.80	325.4	-70.6	-324.3	0.00	0.00	0.00
2,900.0	12.00	347.77	2,865.0	1,716.98	345.7	-75.0	-344.5	0.00	0.00	0.00
END OF TANGENT										
2,934.7	12.00	347.77	2,899.0	1,683.05	352.8	-76.5	-351.6	0.00	0.00	0.00
3,000.0	10.70	347.77	2,963.0	1,619.02	365.3	-79.2	-364.1	2.00	-2.00	0.00
3,100.0	8.70	347.77	3,061.5	1,520.45	381.8	-82.8	-380.5	2.00	-2.00	0.00
3,200.0	6.70	347.77	3,160.6	1,421.36	394.9	-85.6	-393.5	2.00	-2.00	0.00
3,300.0	4.70	347.77	3,260.1	1,321.86	404.6	-87.7	-403.2	2.00	-2.00	0.00
3,400.0	2.70	347.77	3,359.9	1,222.07	410.9	-89.1	-409.5	2.00	-2.00	0.00
3,500.0	0.70	347.77	3,459.9	1,122.12	413.8	-89.7	-412.4	2.00	-2.00	0.00
EOD TO VERTICAL										
3,534.8	0.00	0.00	3,494.7	1,087.30	414.0	-89.8	-412.6	2.00	-2.00	0.00
3,600.0	0.00	0.00	3,559.9	1,022.12	414.0	-89.8	-412.6	0.00	0.00	0.00
3,700.0	0.00	0.00	3,659.9	922.12	414.0	-89.8	-412.6	0.00	0.00	0.00
3,800.0	0.00	0.00	3,759.9	822.12	414.0	-89.8	-412.6	0.00	0.00	0.00
3,900.0	0.00	0.00	3,859.9	722.12	414.0	-89.8	-412.6	0.00	0.00	0.00
4,000.0	0.00	0.00	3,959.9	622.12	414.0	-89.8	-412.6	0.00	0.00	0.00
4,100.0	0.00	0.00	4,059.9	522.12	414.0	-89.8	-412.6	0.00	0.00	0.00
4,200.0	0.00	0.00	4,159.9	422.12	414.0	-89.8	-412.6	0.00	0.00	0.00
4,300.0	0.00	0.00	4,259.9	322.12	414.0	-89.8	-412.6	0.00	0.00	0.00
4,400.0	0.00	0.00	4,359.9	222.12	414.0	-89.8	-412.6	0.00	0.00	0.00
4,500.0	0.00	0.00	4,459.9	122.12	414.0	-89.8	-412.6	0.00	0.00	0.00
4,600.0	0.00	0.00	4,559.9	22.12	414.0	-89.8	-412.6	0.00	0.00	0.00



Database:	EDM 5000.1 Single User Db	Local Co-ordinate Reference:	Well PRONGHORN F-J-18HNC - OPT 2
Company:	BONANZA CREEK ENERGY INC.	TVD Reference:	KB-EST @ 4582.0usft (Original Well Elev)
Project:	WELD COUNTY, COLORADO (NAD 83)	MD Reference:	KB-EST @ 4582.0usft (Original Well Elev)
Site:	NE NW SEC. 18 T5N R61W 6th P.M.	North Reference:	True
Well:	PRONGHORN F-J-18HNC - OPT 2	Survey Calculation Method:	Minimum Curvature
Wellbore:	OPTION 2		
Design:	PROPOSAL #2		

Planned Survey										
MD (usft)	Inc (°)	Azi (°)	TVD (usft)	SS (usft)	+N/-S (usft)	+E/-W (usft)	Vertical Section (usft)	Dogleg Rate (°/100usft)	Build Rate (°/100usft)	Turn Rate (°/100usft)
4,700.0	0.00	0.00	4,659.9	-77.88	414.0	-89.8	-412.6	0.00	0.00	0.00
4,800.0	0.00	0.00	4,759.9	-177.88	414.0	-89.8	-412.6	0.00	0.00	0.00
4,900.0	0.00	0.00	4,859.9	-277.88	414.0	-89.8	-412.6	0.00	0.00	0.00
5,000.0	0.00	0.00	4,959.9	-377.88	414.0	-89.8	-412.6	0.00	0.00	0.00
5,100.0	0.00	0.00	5,059.9	-477.88	414.0	-89.8	-412.6	0.00	0.00	0.00
5,200.0	0.00	0.00	5,159.9	-577.88	414.0	-89.8	-412.6	0.00	0.00	0.00
5,300.0	0.00	0.00	5,259.9	-677.88	414.0	-89.8	-412.6	0.00	0.00	0.00
5,400.0	0.00	0.00	5,359.9	-777.88	414.0	-89.8	-412.6	0.00	0.00	0.00
5,500.0	0.00	0.00	5,459.9	-877.88	414.0	-89.8	-412.6	0.00	0.00	0.00
5,600.0	0.00	0.00	5,559.9	-977.88	414.0	-89.8	-412.6	0.00	0.00	0.00
KOP (12°/100ft BUR)										
5,678.8	0.00	0.00	5,638.7	-1,056.70	414.0	-89.8	-412.6	0.00	0.00	0.00
5,700.0	2.54	179.75	5,659.9	-1,077.87	413.5	-89.8	-412.1	12.00	12.00	0.00
5,800.0	14.54	179.75	5,758.6	-1,176.58	398.7	-89.7	-397.3	12.00	12.00	0.00
5,900.0	26.54	179.75	5,852.1	-1,270.05	363.6	-89.5	-362.3	12.00	12.00	0.00
6,000.0	38.54	179.75	5,936.2	-1,354.20	310.0	-89.3	-308.6	12.00	12.00	0.00
6,100.0	50.54	179.75	6,007.3	-1,425.34	239.9	-89.0	-238.6	12.00	12.00	0.00
6,200.0	62.54	179.75	6,062.4	-1,480.38	156.7	-88.6	-155.3	12.00	12.00	0.00
6,300.0	74.54	179.75	6,098.9	-1,516.89	63.8	-88.2	-62.4	12.00	12.00	0.00
START OF TANGENT										
6,303.8	75.00	179.75	6,099.9	-1,517.90	60.1	-88.2	-58.7	12.00	12.00	0.00
6,400.0	75.00	179.75	6,124.8	-1,542.79	-32.8	-87.8	34.1	0.00	0.00	0.00
END OF TANGENT										
6,403.8	75.00	179.75	6,125.8	-1,543.78	-36.5	-87.8	37.8	0.00	0.00	0.00
6,500.0	86.54	179.75	6,141.2	-1,559.18	-131.3	-87.4	132.6	12.00	12.00	0.00
7" ICP *NEW* - PRONGHORN F-J-18HNC										
6,528.8	90.00	179.75	6,142.0	-1,560.05	-160.1	-87.3	161.4	12.00	12.00	0.00
6,600.0	90.00	179.75	6,142.0	-1,560.05	-231.3	-86.9	232.6	0.00	0.00	0.00
6,700.0	90.00	179.75	6,142.0	-1,560.05	-331.3	-86.5	332.5	0.00	0.00	0.00
6,800.0	90.00	179.75	6,142.0	-1,560.05	-431.3	-86.1	432.5	0.00	0.00	0.00
6,900.0	90.00	179.75	6,142.0	-1,560.05	-531.3	-85.6	532.5	0.00	0.00	0.00
7,000.0	90.00	179.75	6,142.0	-1,560.05	-631.3	-85.2	632.5	0.00	0.00	0.00
7,100.0	90.00	179.75	6,142.0	-1,560.05	-731.3	-84.8	732.5	0.00	0.00	0.00
7,200.0	90.00	179.75	6,142.0	-1,560.05	-831.3	-84.3	832.4	0.00	0.00	0.00
7,300.0	90.00	179.75	6,142.0	-1,560.05	-931.3	-83.9	932.4	0.00	0.00	0.00
7,400.0	90.00	179.75	6,142.0	-1,560.04	-1,031.3	-83.4	1,032.4	0.00	0.00	0.00
7,500.0	90.00	179.75	6,142.0	-1,560.04	-1,131.3	-83.0	1,132.4	0.00	0.00	0.00
7,600.0	90.00	179.75	6,142.0	-1,560.04	-1,231.3	-82.6	1,232.4	0.00	0.00	0.00
7,700.0	90.00	179.75	6,142.0	-1,560.04	-1,331.3	-82.1	1,332.3	0.00	0.00	0.00
7,800.0	90.00	179.75	6,142.0	-1,560.04	-1,431.3	-81.7	1,432.3	0.00	0.00	0.00
7,900.0	90.00	179.75	6,142.0	-1,560.04	-1,531.3	-81.2	1,532.3	0.00	0.00	0.00
8,000.0	90.00	179.75	6,142.0	-1,560.04	-1,631.3	-80.8	1,632.3	0.00	0.00	0.00
8,100.0	90.00	179.75	6,142.0	-1,560.04	-1,731.3	-80.4	1,732.3	0.00	0.00	0.00
8,200.0	90.00	179.75	6,142.0	-1,560.04	-1,831.3	-79.9	1,832.2	0.00	0.00	0.00
8,300.0	90.00	179.75	6,142.0	-1,560.04	-1,931.2	-79.5	1,932.2	0.00	0.00	0.00
8,400.0	90.00	179.75	6,142.0	-1,560.04	-2,031.2	-79.0	2,032.2	0.00	0.00	0.00
8,500.0	90.00	179.75	6,142.0	-1,560.04	-2,131.2	-78.6	2,132.2	0.00	0.00	0.00
8,600.0	90.00	179.75	6,142.0	-1,560.04	-2,231.2	-78.1	2,232.2	0.00	0.00	0.00
8,700.0	90.00	179.75	6,142.0	-1,560.04	-2,331.2	-77.7	2,332.2	0.00	0.00	0.00
8,800.0	90.00	179.75	6,142.0	-1,560.03	-2,431.2	-77.2	2,432.1	0.00	0.00	0.00
8,900.0	90.00	179.74	6,142.0	-1,560.03	-2,531.2	-76.8	2,532.1	0.00	0.00	0.00
9,000.0	90.00	179.74	6,142.0	-1,560.03	-2,631.2	-76.4	2,632.1	0.00	0.00	0.00
9,100.0	90.00	179.74	6,142.0	-1,560.03	-2,731.2	-75.9	2,732.1	0.00	0.00	0.00



Database:	EDM 5000.1 Single User Db	Local Co-ordinate Reference:	Well PRONGHORN F-J-18HNC - OPT 2
Company:	BONANZA CREEK ENERGY INC.	TVD Reference:	KB-EST @ 4582.0usft (Original Well Elev)
Project:	WELD COUNTY, COLORADO (NAD 83)	MD Reference:	KB-EST @ 4582.0usft (Original Well Elev)
Site:	NE NW SEC. 18 T5N R61W 6th P.M.	North Reference:	True
Well:	PRONGHORN F-J-18HNC - OPT 2	Survey Calculation Method:	Minimum Curvature
Wellbore:	OPTION 2		
Design:	PROPOSAL #2		

Planned Survey										
MD (usft)	Inc (°)	Azi (°)	TVD (usft)	SS (usft)	+N/-S (usft)	+E/-W (usft)	Vertical Section (usft)	Dogleg Rate (°/100usft)	Build Rate (°/100usft)	Turn Rate (°/100usft)
9,200.0	90.00	179.74	6,142.0	-1,560.03	-2,831.2	-75.5	2,832.1	0.00	0.00	0.00
9,300.0	90.00	179.74	6,142.0	-1,560.03	-2,931.2	-75.0	2,932.0	0.00	0.00	0.00
9,400.0	90.00	179.74	6,142.0	-1,560.03	-3,031.2	-74.6	3,032.0	0.00	0.00	0.00
9,500.0	90.00	179.74	6,142.0	-1,560.02	-3,131.2	-74.1	3,132.0	0.00	0.00	0.00
9,600.0	90.00	179.74	6,142.0	-1,560.02	-3,231.2	-73.7	3,232.0	0.00	0.00	0.00
9,700.0	90.00	179.74	6,142.0	-1,560.02	-3,331.2	-73.2	3,332.0	0.00	0.00	0.00
9,800.0	90.00	179.74	6,142.0	-1,560.02	-3,431.2	-72.8	3,431.9	0.00	0.00	0.00
9,900.0	90.00	179.74	6,142.0	-1,560.02	-3,531.2	-72.3	3,531.9	0.00	0.00	0.00
10,000.0	90.00	179.74	6,142.0	-1,560.02	-3,631.2	-71.9	3,631.9	0.00	0.00	0.00
10,100.0	90.00	179.74	6,142.0	-1,560.02	-3,731.2	-71.4	3,731.9	0.00	0.00	0.00
10,200.0	90.00	179.74	6,142.0	-1,560.01	-3,831.2	-71.0	3,831.9	0.00	0.00	0.00
10,300.0	90.00	179.74	6,142.0	-1,560.01	-3,931.2	-70.5	3,931.8	0.00	0.00	0.00
10,400.0	90.00	179.74	6,142.0	-1,560.01	-4,031.2	-70.1	4,031.8	0.00	0.00	0.00
10,500.0	90.00	179.74	6,142.0	-1,560.01	-4,131.2	-69.6	4,131.8	0.00	0.00	0.00
10,600.0	90.00	179.74	6,142.0	-1,560.01	-4,231.2	-69.2	4,231.8	0.00	0.00	0.00
10,700.0	90.00	179.74	6,142.0	-1,560.00	-4,331.2	-68.7	4,331.8	0.00	0.00	0.00
10,800.0	90.00	179.74	6,142.0	-1,560.00	-4,431.2	-68.3	4,431.8	0.00	0.00	0.00
BHL - PRONGHORN F-J-18HNC										
10,868.0	90.00	179.74	6,142.0	-1,560.00	-4,499.2	-68.0	4,499.8	0.00	0.00	0.00

Plan Annotations					
MD (usft)	TVD (usft)	Local Coordinates		Comment	
		+N/-S (usft)	+E/-W (usft)		
900.0	900.0	0.0	0.0	START NUDGE (2°/100ft BUR)	
1,500.1	1,495.7	61.2	-13.3	EOB TO 12° INC	
2,934.7	2,899.0	352.8	-76.5	END OF TANGENT	
3,534.8	3,494.7	414.0	-89.8	EOD TO VERTICAL	
5,678.8	5,638.7	414.0	-89.8	KOP (12°/100ft BUR)	
6,303.8	6,099.9	60.1	-88.2	START OF TANGENT	
6,403.8	6,125.8	-36.5	-87.8	END OF TANGENT	
6,528.8	6,142.0	-160.1	-87.3	7" ICP *NEW* - PRONGHORN F-J-18HNC	
10,868.0	6,142.0	-4,499.2	-68.0	BHL - PRONGHORN F-J-18HNC	