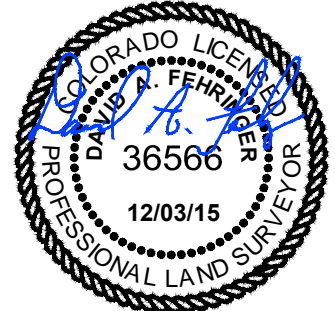


**NOTES:**

- ALL BEARINGS ARE GRID BASED UPON THE COLORADO STATE PLANE COORDINATE SYSTEM, NORTH ZONE, NAD83(2011) DERIVED FROM POST-PROCESSED STATIC GPS OBSERVATIONS.
- DISTANCES ARE ON GRID
- VERTICAL DATUM IS NAVD88 BASED UPON GPS OBSERVATIONS
- PDOP VALUE EQUALS 1.6.
- GPS OPERATOR: MIKE JOHNSON.
- UNDISTURBED GROUND ELEVATION AT WELLHEAD = 4565'
- ALL SECTION LENGTHS ARE MEASURED DISTANCES UNLESS NOTED BY (R), RECORD BEARING AND DISTANCE.
- NEAREST CULTURAL DISTANCES  
 BUILDINGS: 5280' +/-  
 BUILDING UNIT: 5280' +/-  
 HIGH OCCUPANCY BUILDING UNIT: 5280'+  
 DESIGNATED OUTSIDE ACTIVITY AREA: 5280'+  
 PUBLIC ROAD: 421'+  
 ABOVE GROUND UTILITY: 401' +/-  
 RAILROAD: 5280'+  
 PROPERTY LINE: 1425' +/-

**CERTIFICATE OF SURVEYOR:**

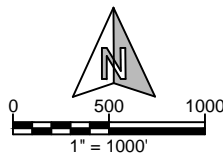
I, DAVID A. FEHRINGER OF LANDER, WYOMING HEREBY CERTIFY THAT THIS WELL LOCATION CERTIFICATE WAS PREPARED FROM NOTES TAKEN DURING AN ACTUAL SURVEY ON DECEMBER 15, 2015; AND THAT IT CORRECTLY SHOWS THE DRILLING LOCATION OF BONANZA CREEK ENERGY, INC., PRONGHORN J-7-6XRLNB AS STAKED DURING SAID SURVEY. THIS MAP DOES NOT REPRESENT A BOUNDARY SURVEY OR AN IMPROVEMENT LOCATION PLAT AND SHOULD NOT BE USED FOR THE ESTABLISHMENT OF BOUNDARY LINES.



3		STATE PLANE COORDINATES		
J-7-6XRLNB	LATITUDE	LONGITUDE	NORTHING	EASTING
SURFACE	40.40733	104.25677	1393657.61	3346202.54
TARGET 1	40.40996	104.25716	1394615.12'	3346082.90'
BOTTOM HOLE	40.43613	104.25745	1404144.73'	3345868.01'



**WILLIAM H. SMITH & ASSOCIATES, Inc.**  
 155 N. 1st Street  
 Lander, WY 82520  
 Phone: 307-335-5646



Drawn By: MAM  
 Checked By: DAF  
 Job No.:  
 Date: 09/03/15  
 Revision: 1\_Change Surface Locations\_12-02-15

IF BAR LENGTH DOES NOT EQUAL 1"(ONE INCH), THIS PAGE WAS NOT PLOTTED TO THE INTENDED SCALE.

**LOCATION CERTIFICATE**

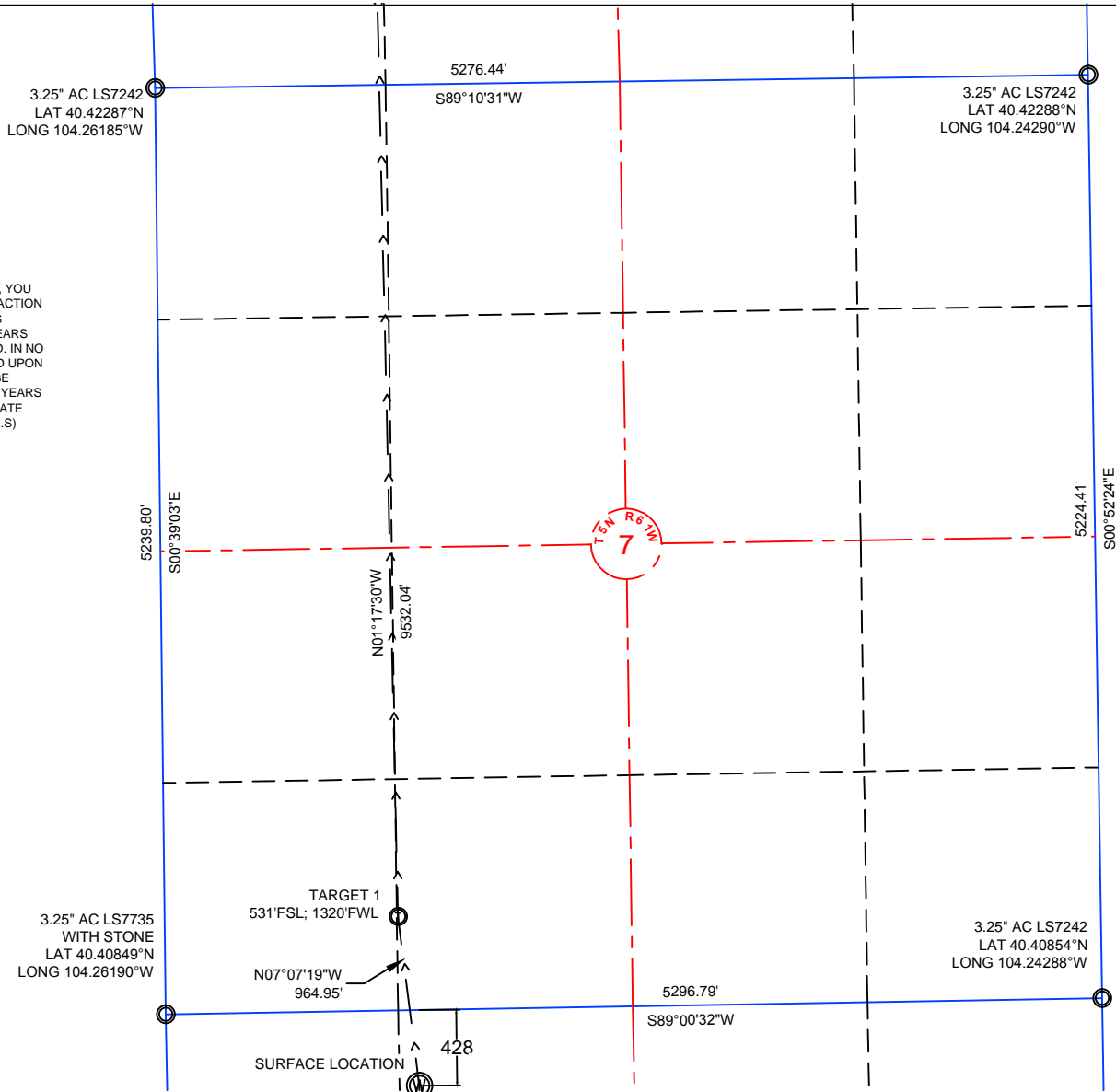
PRONGHORN  
 J-7-6XRLNB  
 NE¼ NW¼, SECTION 18,  
 T.5N., R.61W., 6th PM  
 WELD COUNTY, COLORADO



410 17th Street  
 Denver, CO 80202  
 (720) 440-6100

SHEET  
 1  
 OF  
 3

NOTE: UNDER COLORADO LAW, YOU MUST COMMENCE ANY LEGAL ACTION BASED ON ANY DEFECT IN THIS CERTIFICATE WITHIN THREE YEARS AFTER DEFECT IS DISCOVERED. IN NO EVENT MAY ANY ACTION BASED UPON ANY DEFECT IN THIS SURVEY BE COMMENCED MORE THAN TEN YEARS AFTER DATE OF THIS CERTIFICATE SHOWN HEREON. (13-80105 C.R.S)

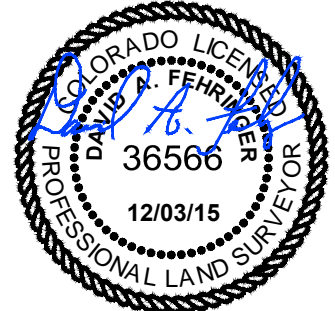


NOTES:

- ALL BEARINGS ARE GRID BASED UPON THE COLORADO STATE PLANE COORDINATE SYSTEM, NORTH ZONE, NAD83(2011) DERIVED FROM POST-PROCESSED STATIC GPS OBSERVATIONS.
- DISTANCES ARE ON GRID
- VERTICAL DATUM IS NAVD88 BASED UPON GPS OBSERVATIONS
- PDOP VALUE EQUALS 1.6.
- GPS OPERATOR: MIKE JOHNSON.
- UNDISTURBED GROUND ELEVATION AT WELLHEAD = 4565'
- ALL SECTION LENGTHS ARE MEASURED DISTANCES UNLESS NOTED BY (R), RECORD BEARING AND DISTANCE.
- NEAREST CULTURAL DISTANCES
  - BUILDINGS: 5280' +/-
  - BUILDING UNIT: 5280' +/-
  - HIGH OCCUPANCY BUILDING UNIT: 5280'+
  - DESIGNATED OUTSIDE ACTIVITY AREA: 5280'+
  - PUBLIC ROAD: 421'+
  - ABOVE GROUND UTILITY: 401' +/-
  - RAILROAD: 5280'+
  - PROPERTY LINE: 1425' +/-

CERTIFICATE OF SURVEYOR:

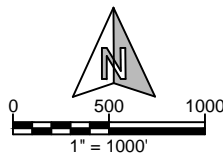
I, DAVID A. FEHRINGER OF LANDER, WYOMING HEREBY CERTIFY THAT THIS WELL LOCATION CERTIFICATE WAS PREPARED FROM NOTES TAKEN DURING AN ACTUAL SURVEY ON DECEMBER 15, 2015; AND THAT IT CORRECTLY SHOWS THE DRILLING LOCATION OF BONANZA CREEK ENERGY, INC., PRONGHORN J-7-6XRLNB AS STAKED DURING SAID SURVEY. THIS MAP DOES NOT REPRESENT A BOUNDARY SURVEY OR AN IMPROVEMENT LOCATION PLAT AND SHOULD NOT BE USED FOR THE ESTABLISHMENT OF BOUNDARY LINES.



3		STATE PLANE COORDINATES		
J-7-6XRLNB	LATITUDE	LONGITUDE	NORTHING	EASTING
SURFACE	40.40733	104.25677	1393657.61	3346202.54
TARGET 1	40.40996	104.25716	1394615.12'	3346082.90'
BOTTOM HOLE	40.43613	104.25745	1404144.73'	3345868.01'



**WILLIAM H. SMITH & ASSOCIATES, Inc.**  
 155 N. 1st Street  
 Lander, WY 82520  
 Phone: 307-335-5646



Drawn By: MAM      Checked By: DAF  
 Job No.:              Date: 09/03/15  
 Revision: 1\_Change Surface Locations\_12-02-15

IF BAR LENGTH DOES NOT EQUAL 1"(ONE INCH), THIS PAGE WAS NOT PLOTTED TO THE INTENDED SCALE.

LOCATION CERTIFICATE

PRONGHORN  
 J-7-6XRLNB  
 SECTION 7 BORE  
 NE 1/4 NW 1/4, SECTION 18,  
 T.5N., R.61W., 6th PM  
 WELD COUNTY, COLORADO

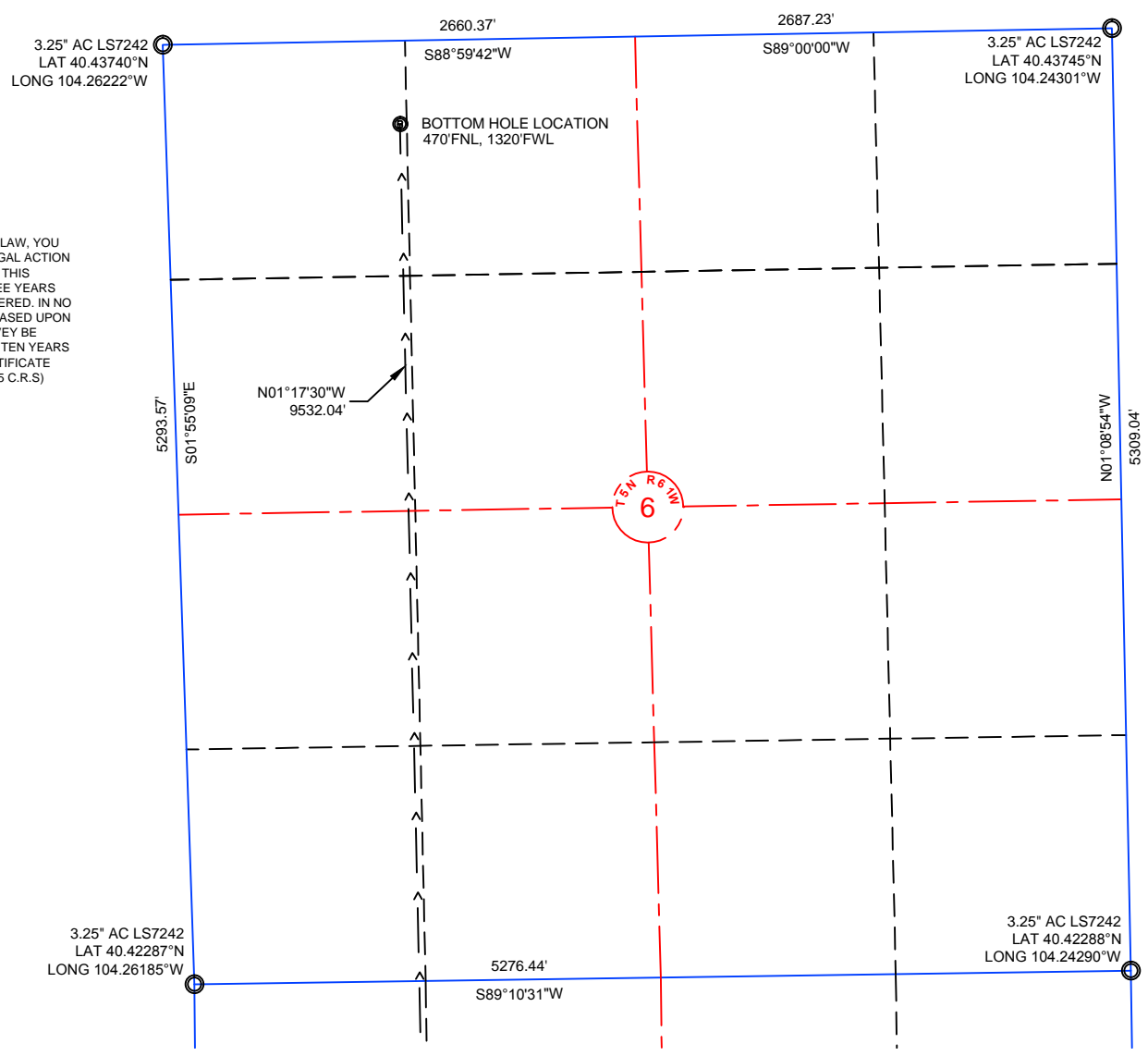


410 17th Street  
 Denver, CO 80202  
 (720) 440-6100

SHEET  
 2  
 OF  
 3

Z:\PROJECTS\1319-01\_BONANZA\5N-61W\DWG\PRONGHORN F-18\_CERTS\rev1.dwg SAVED DATE 2016-05-10 18:19

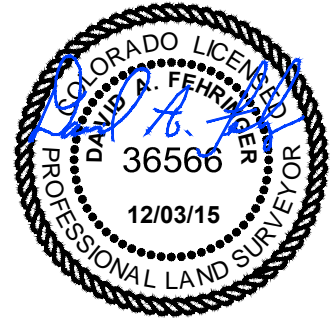
NOTE: UNDER COLORADO LAW, YOU MUST COMMENCE ANY LEGAL ACTION BASED ON ANY DEFECT IN THIS CERTIFICATE WITHIN THREE YEARS AFTER DEFECT IS DISCOVERED. IN NO EVENT MAY ANY ACTION BASED UPON ANY DEFECT IN THIS SURVEY BE COMMENCED MORE THAN TEN YEARS AFTER DATE OF THIS CERTIFICATE SHOWN HEREON. (13-80105 C.R.S)



- NOTES:
- ALL BEARINGS ARE GRID BASED UPON THE COLORADO STATE PLANE COORDINATE SYSTEM, NORTH ZONE, NAD83(2011) DERIVED FROM POST-PROCESSED STATIC GPS OBSERVATIONS.
  - DISTANCES ARE ON GRID
  - VERTICAL DATUM IS NAVD88 BASED UPON GPS OBSERVATIONS
  - PDOP VALUE EQUALS 1.6.
  - GPS OPERATOR: MIKE JOHNSON.
  - UNDISTURBED GROUND ELEVATION AT WELLHEAD = 4565'
  - ALL SECTION LENGTHS ARE MEASURED DISTANCES UNLESS NOTED BY (R), RECORD BEARING AND DISTANCE.
  - NEAREST CULTURAL DISTANCES  
 BUILDINGS: 5280' +/-  
 BUILDING UNIT: 5280' +/-  
 HIGH OCCUPANCY BUILDING UNIT: 5280'+  
 DESIGNATED OUTSIDE ACTIVITY AREA: 5280'+  
 PUBLIC ROAD: 421'+  
 ABOVE GROUND UTILITY: 401' +/-  
 RAILROAD: 5280'+  
 PROPERTY LINE: 1425' +/-

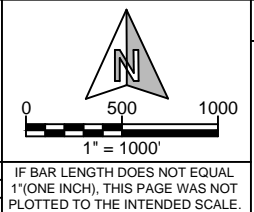
CERTIFICATE OF SURVEYOR:  
 I, DAVID A. FEHRINGER OF LANDER, WYOMING HEREBY CERTIFY THAT THIS WELL LOCATION CERTIFICATE WAS PREPARED FROM NOTES TAKEN DURING AN ACTUAL SURVEY ON DECEMBER 15, 2015; AND THAT IT CORRECTLY SHOWS THE DRILLING LOCATION OF BONANZA CREEK ENERGY, INC., PRONGHORN J-7-6XRLNB AS STAKED DURING SAID SURVEY. THIS MAP DOES NOT REPRESENT A BOUNDARY SURVEY OR AN IMPROVEMENT LOCATION PLAT AND SHOULD NOT BE USED FOR THE ESTABLISHMENT OF BOUNDARY LINES.

3		STATE PLANE COORDINATES		
J-7-6XRLNB	LATITUDE	LONGITUDE	NORTHING	EASTING
SURFACE	40.40733	104.25677	1393657.61	3346202.54
TARGET 1	40.40996	104.25716	1394615.12'	3346082.90'
BOTTOM HOLE	40.43613	104.25745	1404144.73'	3345868.01'



**WILLIAM H. SMITH & ASSOCIATES, Inc.**  
 155 N. 1st Street  
 Lander, WY 82520  
 Phone: 307-335-5646

Drawn By: MAM      Checked By: DAF  
 Job No.:              Date: 09/03/15  
 Revision: 1 Change Surface Locations 12-02-15



LOCATION CERTIFICATE  
 PRONGHORN  
 J-7-6XRLNB  
 BOTTOM HOLE  
 NE $\frac{1}{4}$  NW $\frac{1}{4}$ , SECTION 18,  
 T.5N., R.61W., 6th PM  
 WELD COUNTY, COLORADO

**BONANZA CREEK**  
 410 17th Street  
 Denver, CO 80202  
 (720) 440-6100

SHEET  
 3  
 OF  
 3