

HALLIBURTON

iCem[®] Service

NOBLE ENERGY INC E-BUSINESS

Date: Thursday, February 11, 2016

Wells Ranch AF05-665

Production Casing

Job Date: Tuesday, February 02, 2016

Sincerely,

Julia Nichols

Legal Notice

Warning Disclaimer

Although the information contained in this report is based on sound engineering practices, the copyright owner(s) does (do) not accept any responsibility whatsoever, in negligence or otherwise, for any loss or damage arising from the possession or use of the report whether in terms of correctness or otherwise. The application, therefore, by the user of this report or any part thereof, is solely at the user's own risk.

Limitations of Liability

Except as expressly set forth herein, there are no representations or warranties by Halliburton, express or implied, including implied warranties of merchantability and/or fitness for a particular purpose. In no event will Halliburton or its suppliers be liable for consequential, incidental, special, punitive or exemplary damages (including, without limitation, loss of data, profits, use of hardware, or software). Customer accepts full responsibility for any investment made based on results from the Software. Any interpretations, analyses or modeling of any data, including, but not limited to Customer data, and any recommendation or decisions based upon such interpretations, analyses or modeling are opinions based upon inferences from measurements and empirical relationships and assumptions, which inferences and assumptions are not infallible, and with respect to which professional may differ. Accordingly, Halliburton cannot and does not warrant the accuracy, correctness or completeness of any such interpretation, recommendation, modeling or other products of the Software Product. As such, any interpretation, recommendation or modeling resulting from the Software for the purpose of any drilling, well treatment, production or financial decision will be at the sole risk of Customer. Under no circumstances will Halliburton or its suppliers be liable for any damages.

Table of Contents

Cementing Job Summary 4

 Executive Summary4

Real-Time Job Summary 7

 Job Event Log.....7

Attachments..... 9

 Noble Production Wells Ranch AF05-665 PROD-Custom Results.png9

1.0 Cementing Job Summary

1.1 Executive Summary

Halliburton appreciates the opportunity to perform the cementing services on the **Wells Ranch AF05-665** cement **Production** casing job. A pre-job safety meeting was held before the job where details of the job were discussed, potential safety hazards were reviewed, and environmental compliance procedures were outlined.

50 bbls spacer returned to surface.

Halliburton maintains a continuous quality improvement process and appreciates any comments or suggestions that you may have. Halliburton again thanks you for the opportunity to perform service work on this well. We hope to be your solutions provider for future projects.

Respectfully,

Halliburton [Ft. Lupton]

HALLIBURTON

Cementing Job Summary

The Road to Excellence Starts with Safety

Sold To #: 345242		Ship To #: 3688612		Quote #: 0022151742		Sales Order #: 0903097161					
Customer: NOBLE ENERGY INC - EBUS				Customer Rep: Jim Turner							
Well Name: WELLS RANCH		Well #: AF05-665		API/UWI #: 05-123-42134-00							
Field: WATTENBERG		City (SAP): KERSEY		County/Parish: WELD		State: COLORADO					
Legal Description: SW NW-5-5N-62W-2108FNL-605FWL											
Contractor: H & P DRLG				Rig/Platform Name/Num: H & P 321							
Job BOM: 7523											
Well Type: HORIZONTAL OIL											
Sales Person: HALAMERICA\HB61755				Srv Supervisor: Kendall Broom							
Job											
Formation Name											
Formation Depth (MD)		Top		Bottom							
Form Type				BHST		230 degF					
Job depth MD		16079ft		Job Depth TVD		6341					
Water Depth				Wk Ht Above Floor							
Perforation Depth (MD)		From		To							
Well Data											
Description	New / Used	Size in	ID in	Weight lbm/ft	Thread	Grade	Top MD ft	Bottom MD ft	Top TVD ft	Bottom TVD ft	
Casing		9.625	8.921	36			0	1855	0	1855	
Casing		5.5	4.778	20			0	16068	0	6341	
Open Hole Section			8.5				1855	16079	1855	6341	
Tools and Accessories											
Type	Size in	Qty	Make	Depth ft		Type	Size in	Qty	Make		
Guide Shoe						Top Plug	5.5	1	HES		
Float Shoe	5.5	1		16079		Bottom Plug	5.5	2	HES		
Float Collar	5.5	1		16022		SSR plug set					
Insert Float						Plug Container					
Stage Tool						Centralizers					
Fluid Data											
Stage/Plug #: 1											
Fluid #	Stage Type	Fluid Name			Qty	Qty UoM	Mixing Density lbm/gal	Yield ft3/sack	Mix Fluid Gal	Rate bbl/min	Total Mix Fluid Gal
1	12.0 lb/gal Tuned Spacer III	Tuned Spacer III			40	bbl	12	3.16	19.6		
Fluid #	Stage Type	Fluid Name			Qty	Qty UoM	Mixing Density lbm/gal	Yield ft3/sack	Mix Fluid Gal	Rate bbl/min	Total Mix Fluid Gal

HALLIBURTON

Cementing Job Summary

2	12.0 lb/gal Tuned Spacer III	Tuned Spacer III	40	bbl	12	3.16	20		
Fluid #	Stage Type	Fluid Name	Qty	Qty UoM	Mixing Density lbm/gal	Yield ft3/sack	Mix Fluid Gal	Rate bbl/min	Total Mix Fluid Gal
3	ExpandaCem w/o SCBL	EXPANDACEM (TM) SYSTEM	150	sack	13.2	1.6		5	7.68
7.68 Gal		FRESH WATER							
Fluid #	Stage Type	Fluid Name	Qty	Qty UoM	Mixing Density lbm/gal	Yield ft3/sack	Mix Fluid Gal	Rate bbl/min	Total Mix Fluid Gal
4	ExpandaCem	EXPANDACEM (TM) SYSTEM	567	sack	13.2	1.6		5	7.69
7.69 Gal		FRESH WATER							
Fluid #	Stage Type	Fluid Name	Qty	Qty UoM	Mixing Density lbm/gal	Yield ft3/sack	Mix Fluid Gal	Rate bbl/min	Total Mix Fluid Gal
5	ExpandaCem	EXPANDACEM (TM) SYSTEM	1437	sack	13.5	1.68		5	7.98
7.98 Gal		FRESH WATER							
Fluid #	Stage Type	Fluid Name	Qty	Qty UoM	Mixing Density lbm/gal	Yield ft3/sack	Mix Fluid Gal	Rate bbl/min	Total Mix Fluid Gal
6	Displacement	Displacement	355	bbl	8.33				
Cement Left In Pipe		Amount	42 ft		Reason		Shoe Joint		
Comment 50bbl of Spacer to Surface									

2.0 Real-Time Job Summary

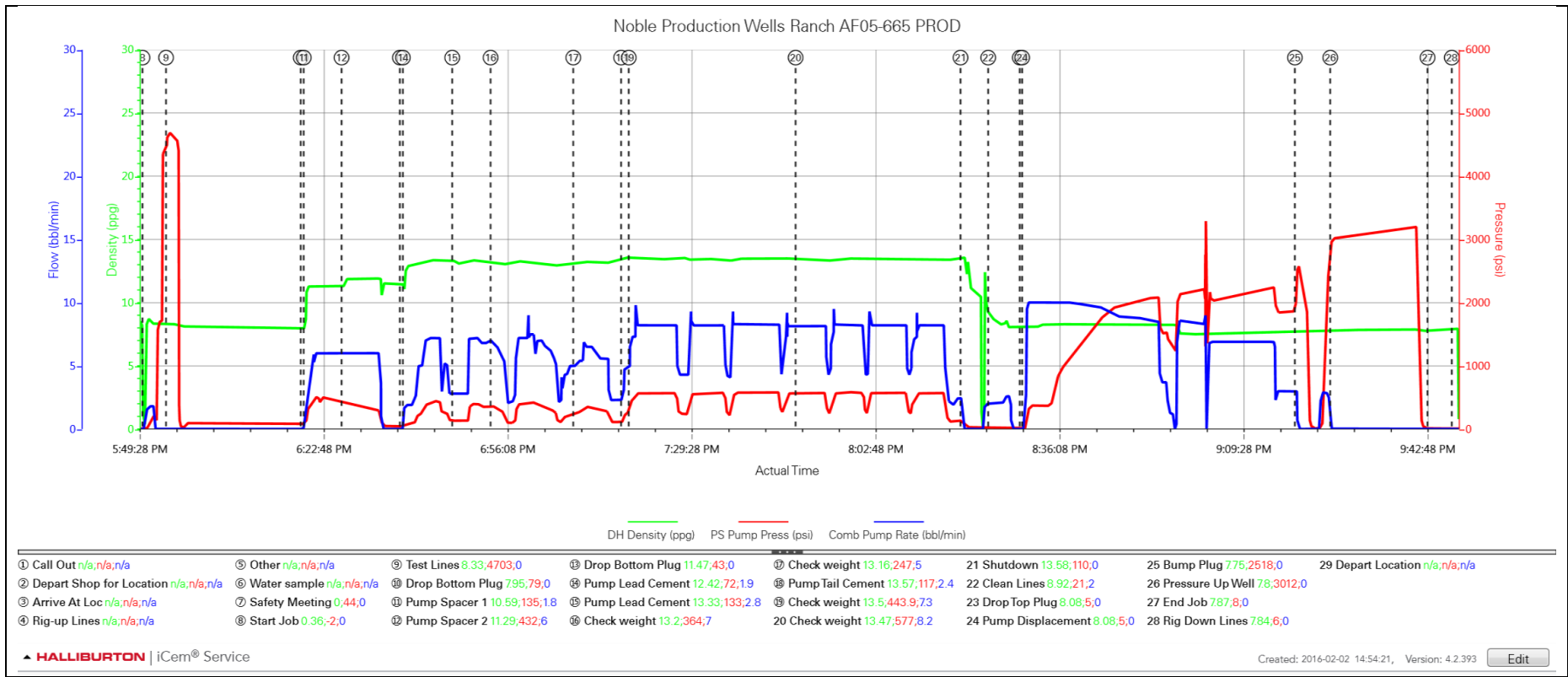
2.1 Job Event Log

Type	Seq. No.	Activity	Graph Label	Date	Time	Source	DH Density (ppg)	PS Pump Press (psi)	Comb Pump Rate (bbl/min)	Comments
Event	1	Call Out	Call Out	2/2/2016	06:00:00	USER				Called out crew to be on location at 1200
Event	2	Depart Shop for Location	Depart Shop for Location	2/2/2016	11:00:00	USER				Held a safety meeting before leaving for location
Event	3	Arrive At Location	Arrive At Location	2/2/2016	13:00:00	USER				Arrived on location and met with the company man
Event	4	Rig-up Lines	Rig-up Lines	2/2/2016	13:05:00	USER				Held a hazard hunt before rigging up lines
Event	5	Other	Other	2/2/2016	13:05:01	USER				8 1/2" OH - TD - 16079', 5 1/2" 20# Casing Set @ 16068', F.C. @ 16022'. 9 5/8" Surface Casing Set @ 1855'
Event	6	Other	Water sample	2/2/2016	15:00:00	USER				Temp 63, Sulfate <200, PH 8, Chloride 0, Iron 0, Hardness 425
Event	7	Safety Meeting	Safety Meeting	2/2/2016	17:15:00	USER				Held a safety meeting with the rig crew to discuss safety and the operation
Event	8	Start Job	Start Job	2/2/2016	17:50:21	COM4				Filled lines with 2 bbl water
Event	9	Test Lines	Test Lines	2/2/2016	17:54:37	COM4	8.33	4702.00	0.00	Pressure Test Lines to 4705 psi
Event	10	Drop Bottom Plug	Drop Bottom Plug	2/2/2016	18:19:01	COM4				Dropped plug, Loaded into casing witnessed by the company man
Event	11	Pump Spacer 1	Pump Spacer 1	2/2/2016	18:19:34	COM4	12.00	135.00	6.00	Mix and Pump 40 bbls Tuned Spacer III for OBM @ 12.0 lb/gal
Event	12	Pump Spacer 2	Pump Spacer 2	2/2/2016	18:26:25	COM4	12.00	431.00	6.00	Pumped 40 bbl Tuned Spacer III 12.0 #
Event	13	Drop Bottom Plug	Drop Bottom Plug	2/2/2016	18:36:59	COM4				Dropped plug. Loaded into casing witnessed by the company man
Event	14	Pump Lead Cement	Pump Lead Cement	2/2/2016	18:37:32	COM4	13.20	500.00	5.00	Pumped 150 sks ExpandaCem w/o CBL (13.2#, 1.6 yield, 7.68gal/sks) Pumped 42 bbl at 5 bpm and 500 psi
Event	15	Pump Lead Cement	Pump Lead Cement	2/2/2016	18:46:28	COM4	13.20	433.00	5.00	Pumped 567 sks Expandacem 13.2#, 1.6 yield, 7.69 gal/sks. Pumped 161.57 bbl at 7bpm and 390psi

Event	16	Check Weight	Check weight	2/2/2016	18:53:25	COM4	13.20	364.00	7.00	Verified weight with pressurized scales
Event	17	Check Weight	Check weight	2/2/2016	19:08:24	COM4	13.16	247.00	5.00	Verified weight with pressurized scales
Event	18	Pump Tail Cement	Pump Tail Cement	2/2/2016	19:17:04	COM4	13.50	617.00	8.00	Pumped 1437 sks ExpandaCem (13.5#, 1.68 yield, 7.98gal/sks) Pumped 429.96 bbl at 8 bpm and 568 psi
Event	19	Check Weight	Check weight	2/2/2016	19:18:27	COM4	13.50	570.0	8.00	Verified weight with pressurized scales
Event	20	Check Weight	Check weight	2/2/2016	19:48:41	COM4	13.50	576.00	8.20	Verified weight with pressurized scales
Event	21	Shutdown	Shutdown	2/2/2016	20:18:34	COM4				Washed cement head
Event	22	Clean Lines	Clean Lines	2/2/2016	20:23:35	COM4				Blew down lines with rig air and washed up lines
Event	23	Drop Top Plug	Drop Top Plug	2/2/2016	20:29:18	COM4				Dropped plug, loaded in the casing witnessed by the company man
Event	24	Pump Displacement	Pump Displacement	2/2/2016	20:29:44	COM4	8.33	500.00	10.00	Pumped 354 bbl water displacement, first 10 with MMCR. 50 bbls of spacer returned to surface
Event	25	Bump Plug	Bump Plug	2/2/2016	21:19:09	COM4				Final circulating pressure was 1858psi. Pressure brought to 2602psi. Pressure fell off quickly but casing test held. Check Floats 3.5bbl back.
Event	26	Pressure Up Well	Pressure Up Well	2/2/2016	21:25:33	COM4	7.80	3012.00	0.00	3000psi casing test. Pressure held. 5bbl back
Event	27	End Job	End Job	2/2/2016	21:43:11	COM4				
Event	28	Rig Down Lines	Rig Down Lines	2/2/2016	21:47:35	USER				Held safety meeting before rigging down.
Event	29	Depart Location	Depart Location	2/2/2016	22:47:00	USER				Held journey management meeting prior to leaving location.

3.0 Attachments

3.1 Noble Production Wells Ranch AF05-665 PROD-Custom Results.png



Noble Production Wells Ranch AF05-665 PROD

