

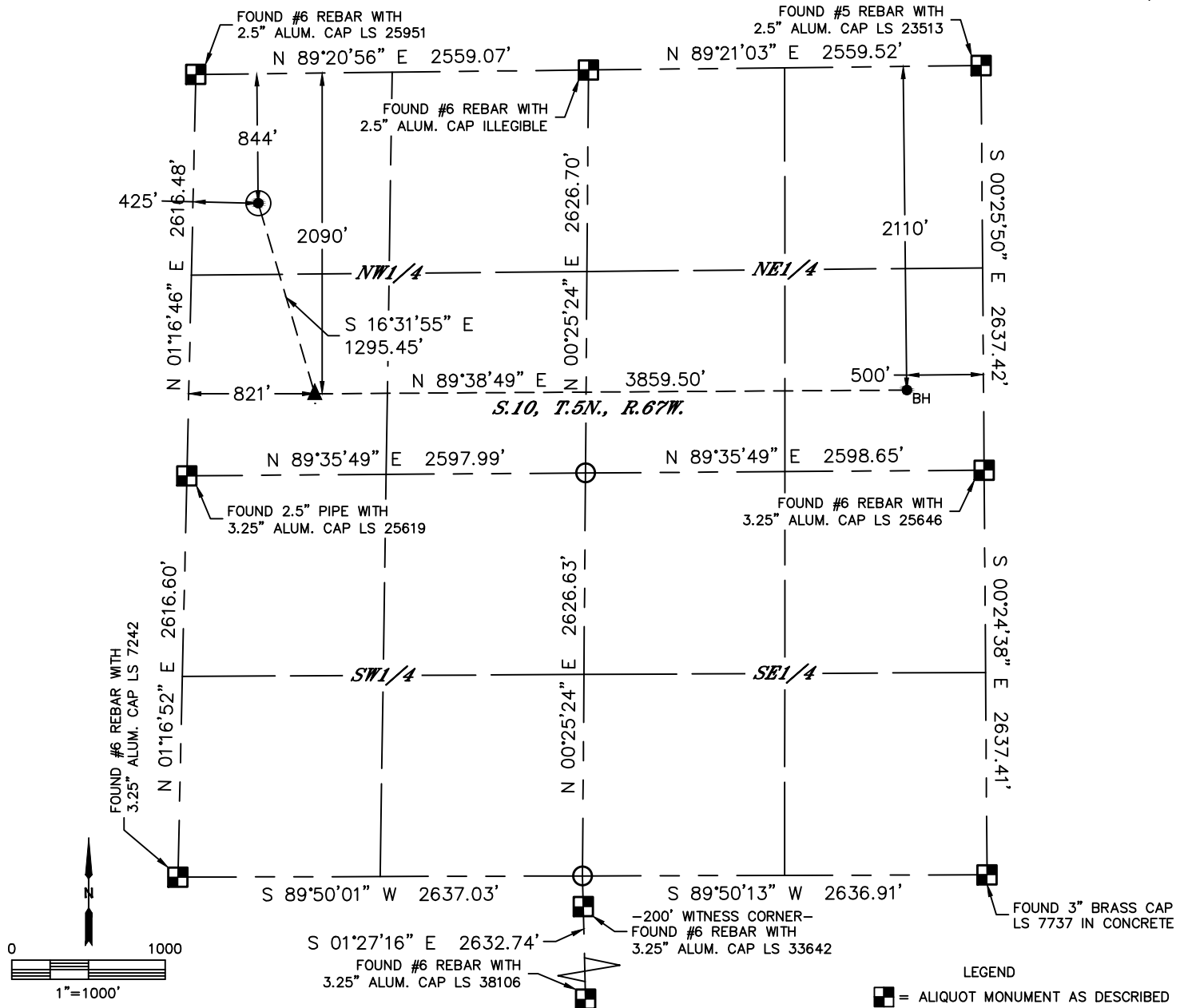


Lat40°, Inc. 6250 W. 10th Street, Unit 2, Greeley, CO 970-515-5294

# WELL LOCATION CERTIFICATE

HIGH POINTE LLC 10G-312

SECTION: 10  
TOWNSHIP: 5N  
RANGE: 67W  
6TH. P.M.  
WELD COUNTY, CO



CLIENT: PDC ENERGY					LANDMAN: JEFF HINDMARSH				
INSTRUMENT OPERATOR: CASEY KOHOUT					SURVEY DATE: 11/18/2015		SURFACE USE: CROP LAND		
SHL FOOTAGE		SHL LAT °		SHL LONG °	SHL PDOP	SHL ELEV (FT.)	SHL 1/4/1/4		SHL S-T-R
844	FNL	425	FWL	40.41894	-104.88680	3.2	4924	NWNW	10-5-67

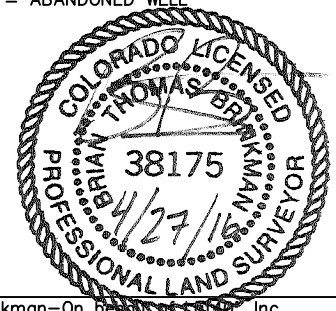
BHL FOOTAGE				BHL LAT °	BHL LONG °	BHL S-T-R	EP LAT °	EP LONG °	EP S-T-R
2110	FNL	500	FEL	40.41552	-104.87165	10-5-67	40.41553	-104.88551	10-5-67

NOTE:

- 1) Bearings shown are Grid Bearings of the Colorado State Plane Coordinate System, North Zone, North American Datum 1983. The lineal dimensions as contained herein are based upon the "U.S. Survey Foot."
- 2) Distances to section lines measured at 90 degrees from said section lines.
- 3) Ground elevations are based on an observed GPS elevation (NAVD 1988 DATUM).
- 4) Latitude and Longitude shown are (NAD 83 DATUM).
- 5) IMPROVEMENTS: See LOCATION DRAWING for all visible improvements within 500' of oil and gas location.
- 6) This map does not represent a boundary survey.

NEAREST CULTURAL ITEMS	
BUILDING	±2027' NE
BUILDING UNIT	±2027' NE
HIGH OCCUPANCY BUILDING UNIT	5280'+
DESIGNATED OUTSIDE ACTIVITY AREA	5280'+
PUBLIC ROAD (131ST AVENUE)	±432' W
ABOVE GROUND UTILITY	±441' S
RAILROAD	±4807' NW
PROPERTY LINE	±425' W

- LEGEND
- = ALIQUOT MONUMENT AS DESCRIBED
  - = CALCULATED POSITION
  - = SURFACE HOLE LOCATION (SHL)
  - ▲ = ENTRY POINT LOCATION (EP)
  - BH = BOTTOM HOLE LOCATION (BHL)
  - ⊕ = EXISTING WELL
  - ⊙ = ABANDONED WELL



Brian T. Brinkman—On Behalf of Lat40°, Inc.  
Colorado Licensed Professional Land Surveyor No. 38175  
DATE: 4/27/2016  
PROJECT#: 2015119