

WELL COMPLETION DIAGRAMS



6899 Pecos Street, Unit C
Denver, Colorado 80221

CLIENT: Kerr-McGee Oil and Gas Onshore, LP

DRILLED BY: Brandon Levasseur

PROJECT MANAGER: Robert Cornez

DRILLING CONTRACTOR: Tasman Geosciences, Inc.

DRILLING EQUIPMENT: AMS PowerProbe

DRILL BIT SIZE (INCHES): 2-3/8"

DATE STARTED - COMPLETED: 12/15/2014

TOTAL WELL DEPTH (FT. BGS): 14

DEPTH TO WATER (FT. BGS): 5.5

Windell 5-18

BORING / WELL ID: BH01

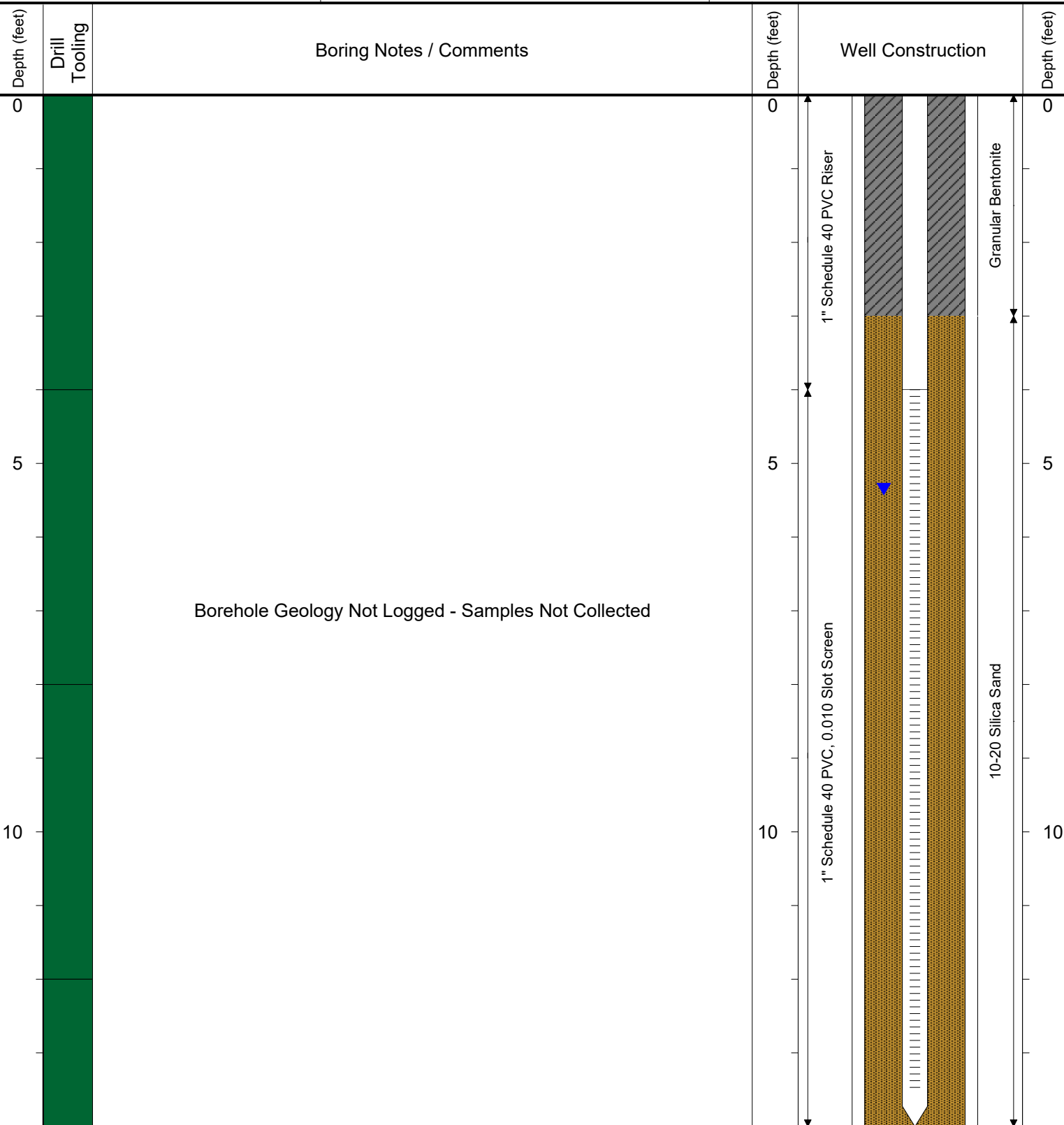
SURFACE COMPLETION: Flush Mount

LATITUDE (NAD 83): 40.139940589696

LONGITUDE (NAD 83): -104.827335846

CASING ELEVATION (FT. AMSL): 4850.235

GROUND ELEVATION (FT. AMSL): 4850.455



Drilling / Sample Method:

Solid-Stem Auger

Perforated Injection Tool

Direct Push - Expendable Well Tip



6899 Pecos Street, Unit C
Denver, Colorado 80221

CLIENT: Kerr-McGee Oil and Gas Onshore, LP

DRILLED BY: Brandon Levasseur

PROJECT MANAGER: Robert Cornez

DRILLING CONTRACTOR: Tasman Geosciences, Inc.

DRILLING EQUIPMENT: AMS PowerProbe

DRILL BIT SIZE (INCHES): 2-3/8"

DATE STARTED - COMPLETED: 12/15/2014

TOTAL WELL DEPTH (FT. BGS): 13

DEPTH TO WATER (FT. BGS): 5.6

Windell 5-18

BORING / WELL ID: BH02

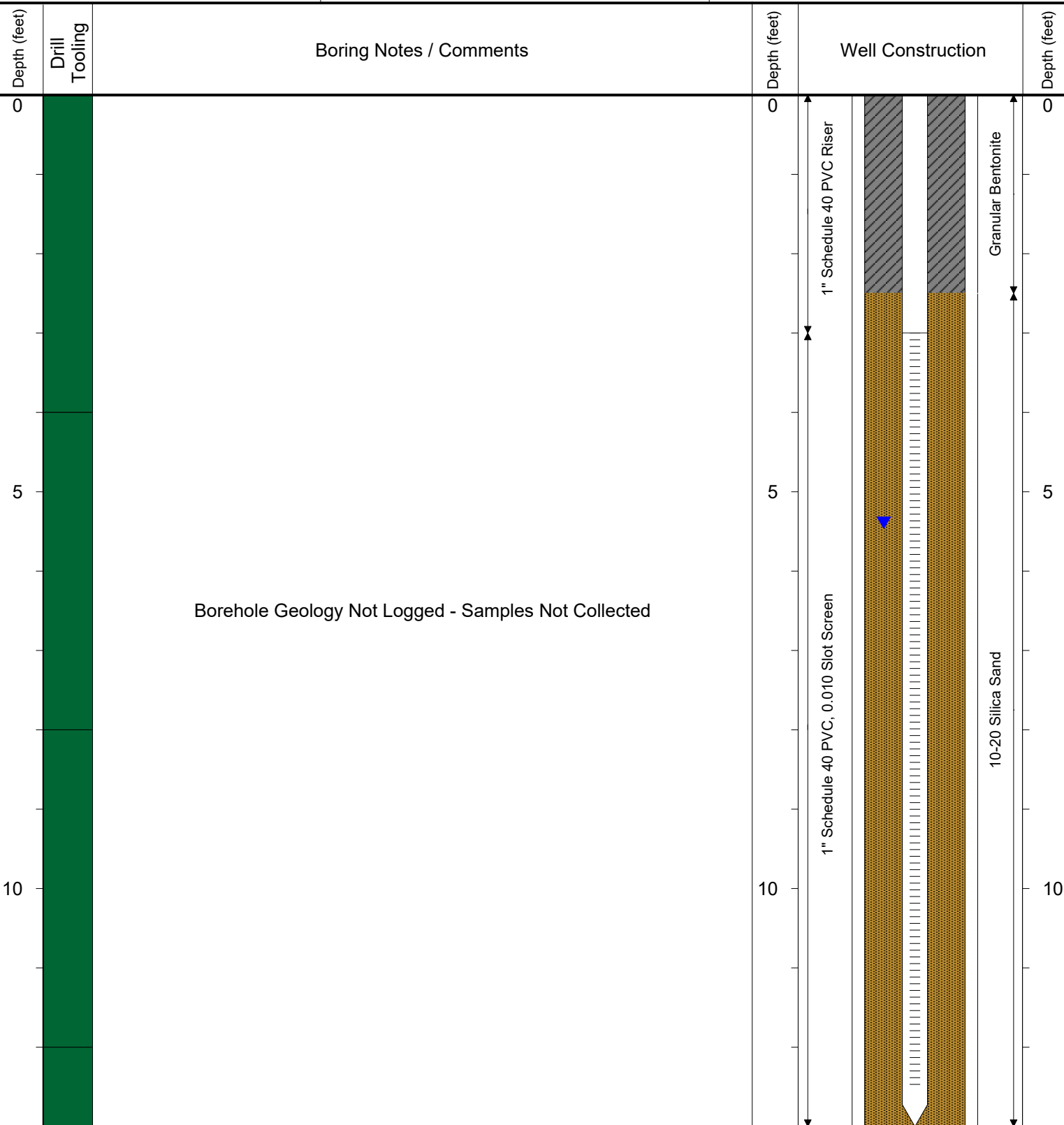
SURFACE COMPLETION: Flush Mount

LATITUDE (NAD 83): 40.139853219426

LONGITUDE (NAD 83): -104.82728088717

CASING ELEVATION (FT. AMSL): 4850.545

GROUND ELEVATION (FT. AMSL): 4850.785



Drilling / Sample Method:

Solid-Stem Auger

Direct Push - Expendable Well Tip

Perforated Injection Tool



6899 Pecos Street, Unit C
Denver, Colorado 80221

CLIENT: Kerr-McGee Oil and Gas Onshore, LP

DRILLED BY: Brandon Levasseur

PROJECT MANAGER: Robert Cornez

DRILLING CONTRACTOR: Tasman Geosciences, Inc.

DRILLING EQUIPMENT: AMS PowerProbe

DRILL BIT SIZE (INCHES): 2-3/8"

DATE STARTED - COMPLETED: 12/15/2014

TOTAL WELL DEPTH (FT. BGS): 13.6

DEPTH TO WATER (FT. BGS): 5.5

Windell 5-18

BORING / WELL ID: BH03

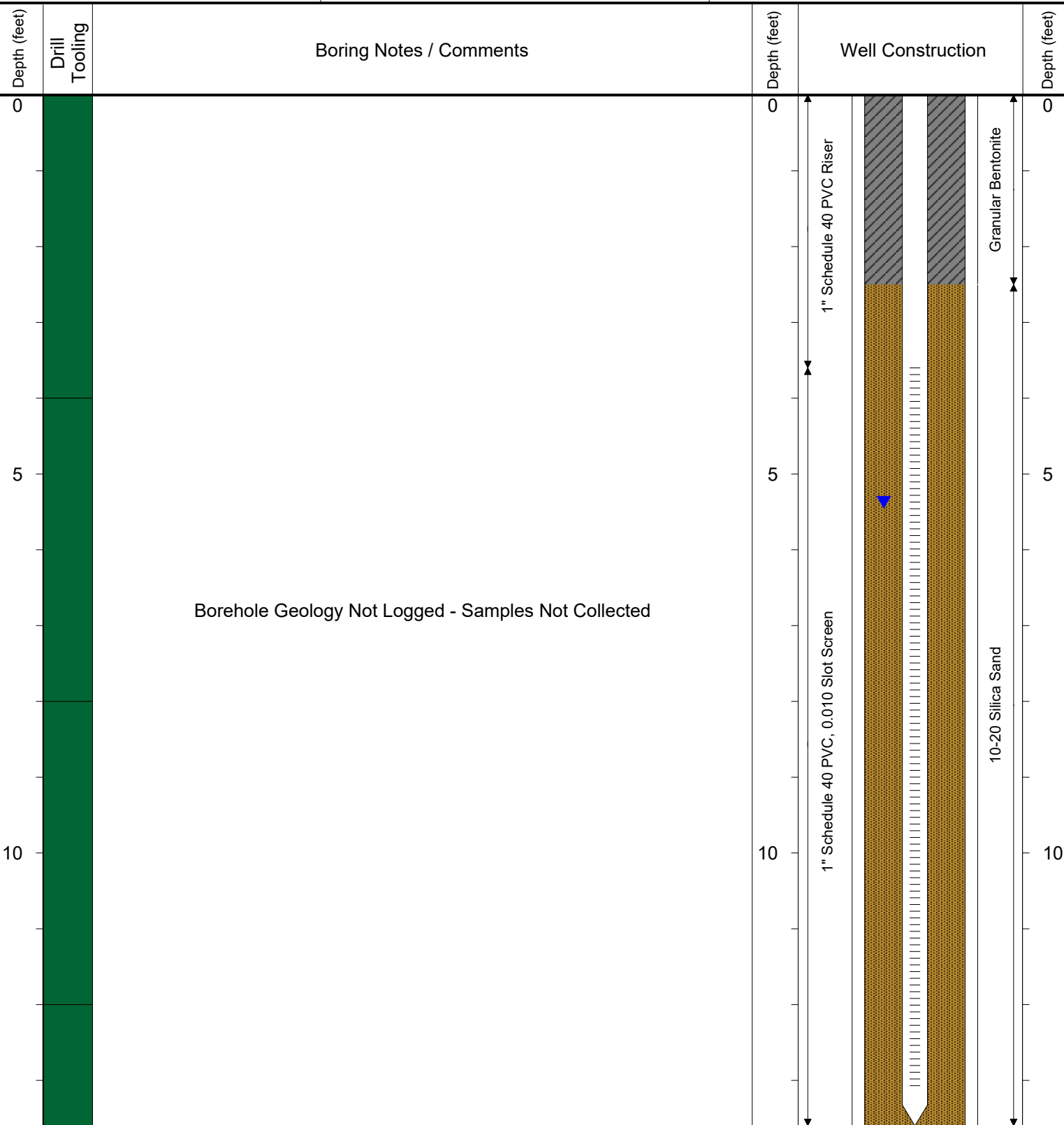
SURFACE COMPLETION: Flush Mount

LATITUDE (NAD 83): 40.139809111446

LONGITUDE (NAD 83): -104.82732451938

CASING ELEVATION (FT. AMSL): 4850.535

GROUND ELEVATION (FT. AMSL): 4851.205



Drilling / Sample Method:

Solid-Stem Auger

Direct Push - Expendable Well Tip

Perforated Injection Tool