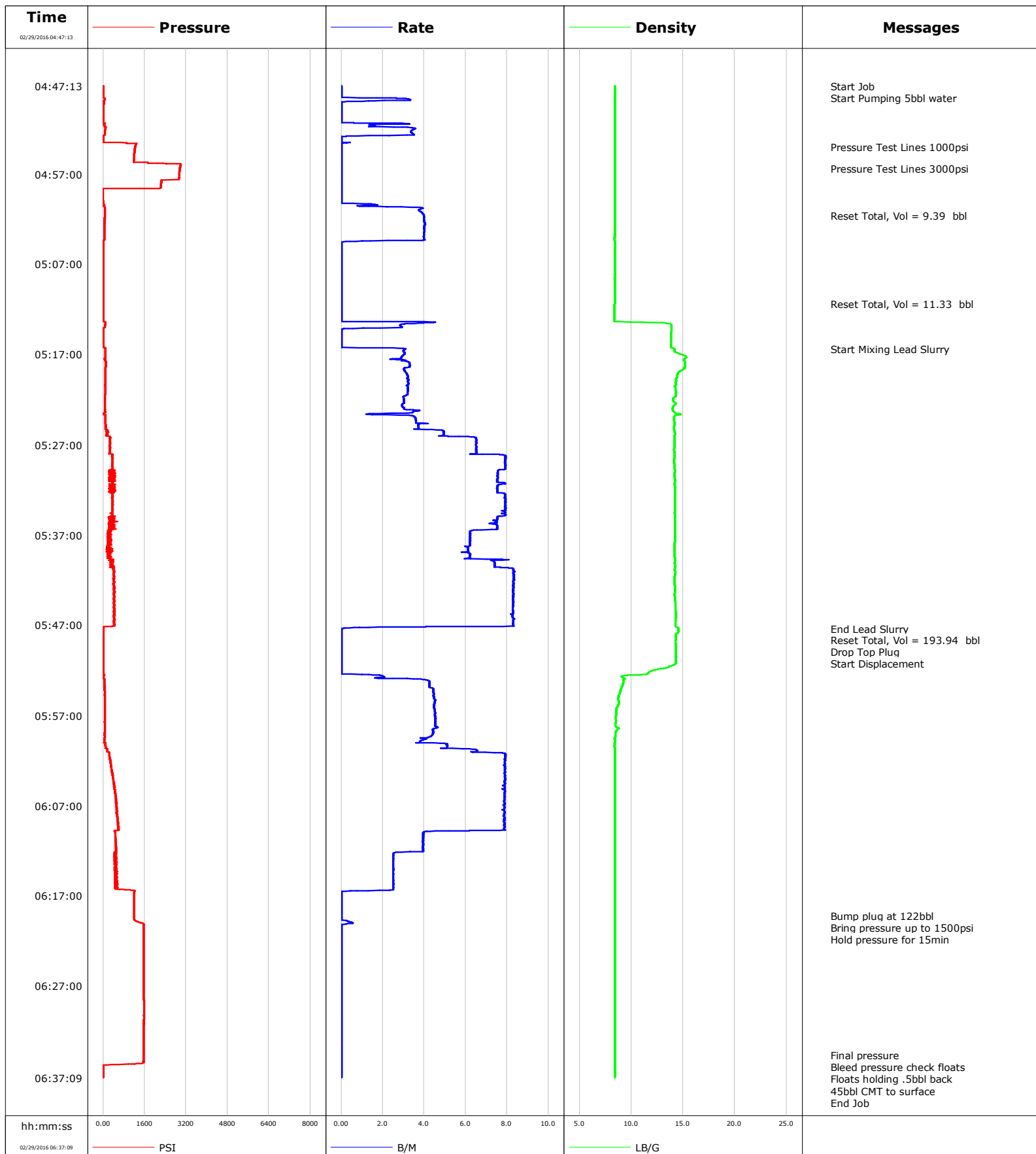


Well	State Antelope	Client	Bonanza Creek
Field	DJ	SIR No.	DKFJ-00014
Engineer	Chris Valerio/Matt Leiker	Job Type	Surface
Country	United States	Job Date	02-29-2016



Cementing Service Report

				Customer Bonanza Creek				Job Number DKFJ-00014			
Well State Antelope 24-21-16XRLNC			Location (legal)			Schlumberger Location			Job Start Feb/29/2016		
Field DJ		Formation Name/Type Shale		Deviation deg		Bit Size 13.5 in		Well MD 1625.0 ft		Well TVD 1625.0 ft	
County Weld		State/Province Colorado		BHP psi		BHST 110 degF		BHCT 83 degF		Pore Press. Gradient lb/gal	
Well Master 0631665953		API/UWI 05123426960000									
Rig Name Xtreme #22		Drilled For Oil		Service Via Land		Casing/ Liner					
						Depth, ft		Size, in		Weight, lb/ft	
Offshore Zone		Well Class New		Well Type Development		1625.0		9.6		36.0	
						0.0		0.0		0.0	
Drilling Fluid Type Water		Max. Density 8.30 lb/gal		Plastic Viscosity cP		Tubing/Drill Pipe					
						T/D		Depth, ft		Size, in	
Service Line Cementing		Job Type Surface									
Max. Allowed Tub. Press 2500 psi		Max. Allowed Ann. Press psi		WH Connection Single Cement head		Perforations/Open Hole					
						Top, ft		Bottom, ft		shot/ft	
						ft		ft			
						ft		ft			
						ft		ft			
						Treat Down Casing		Displacement 122.3 bbl		Packer Type	
										Packer Depth ft	
						Tubing Vol. bbl		Casing Vol. 125.6 bbl		Annular Vol. 141.3 bbl	
										Openhole Vol. bbl	
Casing/Tubing Secured <input checked="" type="checkbox"/>		1 Hole Vol. Circulated prior to Cement <input checked="" type="checkbox"/>		Casing Tools				Squeeze Job			
Lift Pressure 805 psi				Shoe Type Float				Squeeze Type			
Pipe Rotated <input type="checkbox"/>		Pipe Reciprocated <input type="checkbox"/>		Shoe Depth 1625.0 ft				Tool Type			
No. Centralizers		Top Plugs 1		Bottom Plugs 1		Stage Tool Type				Tool Depth ft	
Cement Head Type Single				Stage Tool Depth ft				Tail Pipe Size in			
Job Scheduled For Feb/29/2016 00:00		Arrived on Location Feb/29/2016 00:00		Leave Location Feb/29/2016 08:00		Collar Type Float				Tail Pipe Depth ft	
						Collar Depth 1583.0 ft				Sqz. Total Vol. bbl	
Date	Time 24-hr clock	Treating Pressure PSI	Flow Rate B/M	Density LB/G	Volume BBL	Message					
02/29/2016	04:47:13	2	0.0	8.40	0.0	Started Acquisition					
02/29/2016	04:47:14	2	0.0	8.40	0.0	Start Job					
02/29/2016	04:48:09	1	0.0	8.40	0.0	Start Pumping 5bbl water					
02/29/2016	04:52:13	72	3.4	8.40	3.4						
02/29/2016	04:54:00	1233	0.0	8.40	5.3	Pressure Test Lines 1000psi					
02/29/2016	04:56:20	2962	0.0	8.40	5.3	Pressure Test Lines 3000psi					
02/29/2016	04:57:13	2933	0.0	8.40	5.3						
02/29/2016	05:01:34	59	4.0	8.40	9.3	Reset Total, Vol = 9.39 bbl					
02/29/2016	05:02:13	57	4.0	8.40	11.9						
02/29/2016	05:07:13	2	0.0	8.40	20.7						
02/29/2016	05:11:23	3	0.0	8.40	20.7	Reset Total, Vol = 11.33 bbl					
02/29/2016	05:12:13	3	0.0	8.39	20.7						
02/29/2016	05:16:21	91	3.1	14.12	23.2	Start Mixing Lead Slurry					
02/29/2016	05:17:13	83	2.9	15.27	25.9						
02/29/2016	05:22:13	69	3.0	14.08	41.5						
02/29/2016	05:27:13	267	6.5	14.16	62.8						
02/29/2016	05:32:13	457	7.5	14.22	100.3						
02/29/2016	05:37:13	265	6.2	14.20	137.9						
02/29/2016	05:42:13	442	8.3	14.16	173.3						
02/29/2016	05:47:13	20	1.9	14.42	214.5						
02/29/2016	05:47:22	12	0.1	14.54	214.7	End Lead Slurry					

Well			Field		Job Start		Customer		Job Number	
State Antelope 24-21-16XRLNC			DJ		Feb/29/2016		Bonanza Creek		DKFJ-00014	
Date	Time 24-hr clock	Treating Pressure PSI	Flow Rate B/M	Density LB/G	Volume BBL	Message				
02/29/2016	05:48:41	9	0.0	14.28	214.7	Drop Top Plug				
02/29/2016	05:48:42	9	0.0	14.28	214.7	Start Displacement				
02/29/2016	05:52:13	11	0.0	11.72	214.7					
02/29/2016	05:57:13	62	4.5	8.49	234.4					
02/29/2016	06:02:13	286	7.9	8.41	261.4					
02/29/2016	06:07:13	518	7.9	8.41	300.8					
02/29/2016	06:12:13	462	2.6	8.41	330.6					
02/29/2016	06:17:13	1200	0.0	8.41	341.2					
02/29/2016	06:19:10	1201	0.0	8.42	341.2	Bump plug at 122bbl				
02/29/2016	06:20:06	1559	0.3	8.42	341.3	Bring pressure up to 1500psi				
02/29/2016	06:20:45	1567	0.0	8.42	341.3	Hold pressure for 15min				
02/29/2016	06:22:13	1567	0.0	8.42	341.3					
02/29/2016	06:27:13	1569	0.0	8.42	341.3					
02/29/2016	06:32:13	1569	0.0	8.42	341.3					
02/29/2016	06:34:39	1567	0.0	8.42	341.3	Final pressure				
02/29/2016	06:35:34	1498	0.0	8.42	341.3	Bleed pressure check floats				
02/29/2016	06:36:03	5	0.0	8.42	341.3	Floats holding .5bbl back				
02/29/2016	06:37:01	13	0.0	8.42	341.3	45bbl CMT to surface				

Post Job Summary

Average Pump Rates, bbl/min					Volume of Fluid Injected, bbl						
Slurry 5.4	N2	Mud	Maximum Rate 8.4	Total Slurry 186.0	Mud 0.0	Spacer 10.0	N2				
Treating Pressure Summary, psi					Breakdown Fluid						
Maximum 1567	Final 1567	Average 513	Bump Plug to 1201	Breakdown	Type	Volume bbl	Density lb/gal				
Avg. N2 Percent %		Designed Slurry Volume 186.0 bbl		Displacement 122.0 bbl		Mix Water Temp 58 degF		Cement Circulated to Surface? <input checked="" type="checkbox"/>	Volume 45.0 bbl		
						Washed Thru Perfs <input type="checkbox"/>		To ft			
Customer or Authorized Representative Mike Perez						Schlumberger Supervisor Chris Valerio/Matt Leiker				Circulation Lost <input type="checkbox"/>	Job Completed <input checked="" type="checkbox"/>
										-	-