

EXTRACTION OIL & GAS

WELD COUNTY, COLORADO (NAD 83)

SEC. 32 T6N R67W 6th P.M.

MILKSHAKE 23C

ORIGINAL WELLBORE

05 April, 2016

Plan: PROPOSAL #1

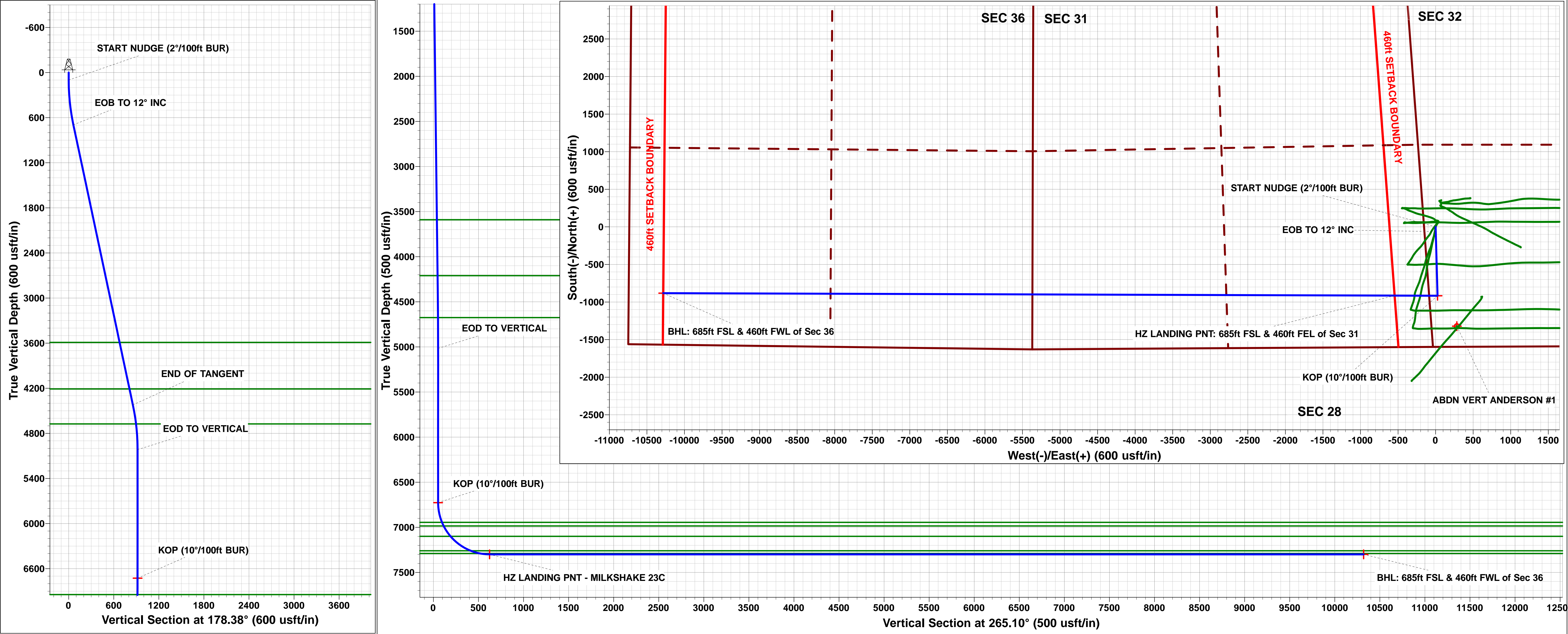
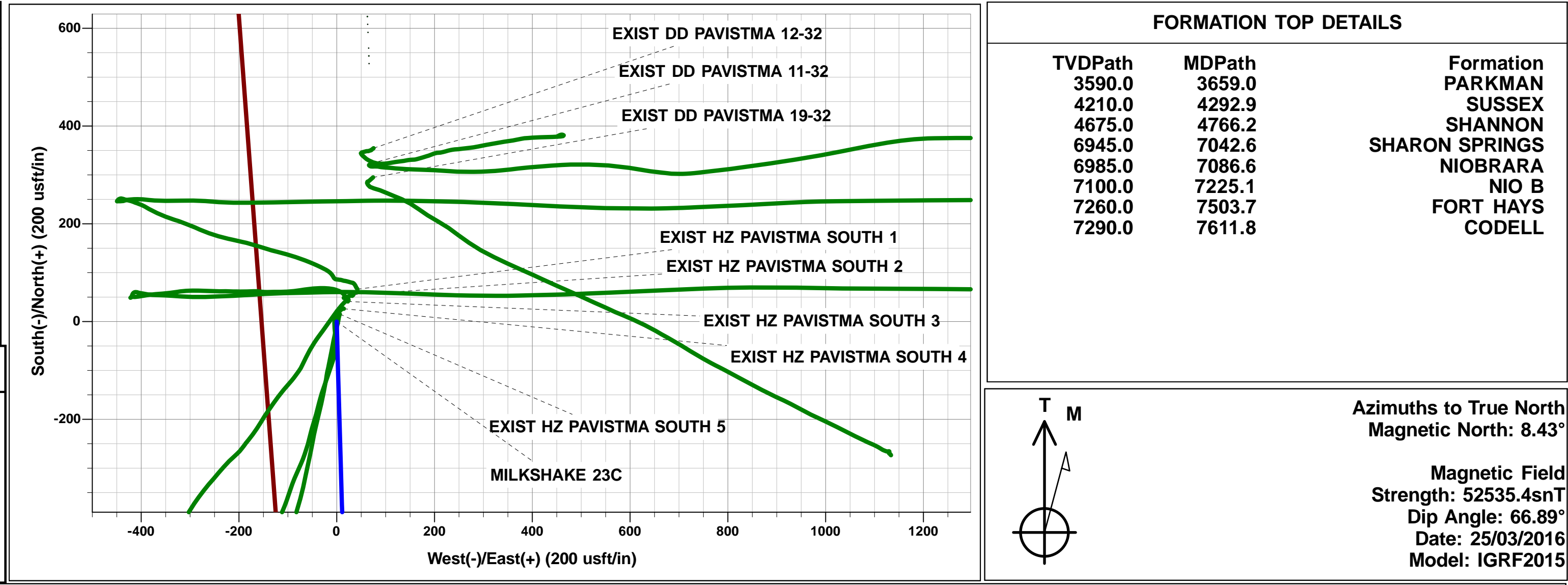




Project: WELD COUNTY, COLORADO (NAD 83)
Site: SEC. 32 T6N R67W 6th P.M.
Well: MILKSHAKE 23C
Wellbore: ORIGINAL WELLBORE
Design: PROPOSAL #1

ANNOTATIONS										
TVD	MD	Inc	Azi	+N/-S	+E/-W	VSec	Dep	Annotation		
0.0	0.0	0.00	0.00	0.0	0.0	0.0	0.0	1597ft FSL & 153ft FWL of Sec 32		
100.0	100.0	0.00	0.00	0.0	0.0	0.0	0.0	START NUDGE (2°/100ft BUR)		
695.6	699.9	12.00	178.38	-62.6	1.8	3.6	62.6	EOB TO 12° INC		
4421.4	4509.0	12.00	178.38	-854.1	24.2	48.9	854.5	END OF TANGENT		
5017.0	5109.0	0.00	0.00	-916.7	26.0	52.4	917.1	EOD TO VERTICAL		
6727.0	6819.0	0.00	0.00	-916.7	26.0	52.4	917.1	KOP (10°/100ft BUR)		
7300.0	7719.0	90.00	270.19	-914.8	-547.0	623.2	1490.1	HZ LANDING PNT: 685ft FSL & 460ft FEL of Sec 31		
7300.0	17454.6	90.00	270.19	-882.0	-10282.5	10320.3	11225.7	BHL: 685ft FSL & 460ft FWL of Sec 36		

WELLBORE TARGET DETAILS (LAT/LONG)					
Name	TVD	+N/-S	+E/-W	Latitude	Longitude
KOP - MILKSHAKE 23C	6727.0	-916.7	26.0	40.437832	-104.924850
HZ LANDING PNT - MILKSHAKE 23C	7300.0	-914.8	-547.0	40.437837	-104.926908
BHL - MILKSHAKE 23C	7300.0	-882.0	-10282.5	40.437921	-104.961882



Planning Report



Database:	EDM 5000.1 Single User Db	Local Co-ordinate Reference:	Well MILKSHAKE 23C
Company:	EXTRACTION OIL & GAS	TVD Reference:	KB-EST @ 4971.0usft (Original Well Elev)
Project:	WELD COUNTY, COLORADO (NAD 83)	MD Reference:	KB-EST @ 4971.0usft (Original Well Elev)
Site:	SEC. 32 T6N R67W 6th P.M.	North Reference:	True
Well:	MILKSHAKE 23C	Survey Calculation Method:	Minimum Curvature
Wellbore:	ORIGINAL WELLBORE		
Design:	PROPOSAL #1		

Project	WELD COUNTY, COLORADO (NAD 83)		
Map System:	US State Plane 1983	System Datum:	Mean Sea Level
Geo Datum:	North American Datum 1983		
Map Zone:	Colorado Northern Zone		Using geodetic scale factor

Site	SEC. 32 T6N R67W 6th P.M.				
Site Position:		Northing:	1,404,306.40 usft	Latitude:	40.441797
From:	Lat/Long	Easting:	3,160,125.71 usft	Longitude:	-104.924705
Position Uncertainty:	0.0 usft	Slot Radius:	1.10000ft	Grid Convergence:	0.37 °

Well	MILKSHAKE 23C					
Well Position	+N-S	-527.9 usft	Northing:	1,403,778.11 usfi	Latitude:	40.440348
	+E-W	-66.2 usft	Easting:	3,160,062.89 usfi	Longitude:	-104.924943
Position Uncertainty		0.0 usft	Wellhead Elevation:	usfi	Ground Level:	4,955.0 usft

Wellbore	ORIGINAL WELLBORE				
Magnetics	Model Name	Sample Date	Declination (°)	Dip Angle (°)	Field Strength (nT)
	IGRF2015	25/03/2016	8.43	66.89	52,535

Design	PROPOSAL #1			
Audit Notes:				
Version:	Phase:	PROTOTYPE	Tie On Depth:	0.0
Vertical Section:	Depth From (TVD) (usft)	+N-S (usft)	+E-W (usft)	Direction (°)
	0.0	0.0	0.0	265.10

Plan Sections											
MD (usft)	Inc (°)	Azi (°)	Vertical Depth	SS (usft)	+N-S (usft)	+E-W (usft)	Dogleg Rate (°/100usf)	Build Rate (°/100usf)	Turn Rate (°/100usf)	TFO (°)	Target
0.0	0.00	0.00	0.0	-4,971.0	0.0	0.0	0.00	0.00	0.00	0.00	
100.0	0.00	0.00	100.0	-4,871.0	0.0	0.0	0.00	0.00	0.00	0.00	
699.9	12.00	178.38	695.6	-4,275.4	-62.6	1.8	2.00	2.00	0.00	178.38	
4,509.0	12.00	178.38	4,421.4	-549.6	-854.1	24.2	0.00	0.00	0.00	0.00	
5,109.0	0.00	0.00	5,017.0	46.0	-916.7	26.0	2.00	-2.00	0.00	180.00	
6,819.0	0.00	0.00	6,727.0	1,756.0	-916.7	26.0	0.00	0.00	0.00	0.00	KOP - MILKSHAKE
7,719.0	90.00	270.19	7,300.0	2,329.0	-914.8	-547.0	10.00	10.00	-9.98	270.19	HZ LANDING PNT
17,454.6	90.00	270.19	7,300.0	2,329.0	-882.0	-10,282.5	0.00	0.00	0.00	27.72	BHL - MILKSHAKE

Database:	EDM 5000.1 Single User Db	Local Co-ordinate Reference:	Well MILKSHAKE 23C
Company:	EXTRACTION OIL & GAS	TVD Reference:	KB-EST @ 4971.0usft (Original Well Elev)
Project:	WELD COUNTY, COLORADO (NAD 83)	MD Reference:	KB-EST @ 4971.0usft (Original Well Elev)
Site:	SEC. 32 T6N R67W 6th P.M.	North Reference:	True
Well:	MILKSHAKE 23C	Survey Calculation Method:	Minimum Curvature
Wellbore:	ORIGINAL WELLBORE		
Design:	PROPOSAL #1		

Planned Survey

MD (usft)	Inc (°)	Azi (°)	TVD (usft)	SS (usft)	+N/-S (usft)	+E/-W (usft)	Vertical Section (usft)	Dogleg Rate (°/100usft)	Build Rate (°/100usft)	Turn Rate (°/100usft)
1597ft FSL & 153ft FWL of Sec 32										
0.0	0.00	0.00	0.0	4,971.00	0.0	0.0	0.0	0.00	0.00	0.00
START NUDGE (2°/100ft BUR)										
100.0	0.00	0.00	100.0	4,871.00	0.0	0.0	0.0	0.00	0.00	0.00
200.0	2.00	178.38	200.0	4,771.02	-1.7	0.0	0.1	2.00	2.00	0.00
300.0	4.00	178.38	299.8	4,671.16	-7.0	0.2	0.4	2.00	2.00	0.00
400.0	6.00	178.38	399.5	4,571.55	-15.7	0.4	0.9	2.00	2.00	0.00
500.0	8.00	178.38	498.7	4,472.30	-27.9	0.8	1.6	2.00	2.00	0.00
600.0	10.00	178.38	597.5	4,373.53	-43.5	1.2	2.5	2.00	2.00	0.00
EOB TO 12° INC										
699.9	12.00	178.38	695.6	4,275.43	-62.6	1.8	3.6	2.00	2.00	0.00
700.0	12.00	178.38	695.6	4,275.38	-62.6	1.8	3.6	0.00	0.00	0.00
800.0	12.00	178.38	793.4	4,177.56	-83.4	2.4	4.8	0.00	0.00	0.00
900.0	12.00	178.38	891.3	4,079.75	-104.1	3.0	6.0	0.00	0.00	0.00
1,000.0	12.00	178.38	989.1	3,981.93	-124.9	3.5	7.1	0.00	0.00	0.00
1,100.0	12.00	178.38	1,086.9	3,884.12	-145.7	4.1	8.3	0.00	0.00	0.00
1,200.0	12.00	178.38	1,184.7	3,786.30	-166.5	4.7	9.5	0.00	0.00	0.00
1,300.0	12.00	178.38	1,282.5	3,688.49	-187.3	5.3	10.7	0.00	0.00	0.00
1,400.0	12.00	178.38	1,380.3	3,590.67	-208.0	5.9	11.9	0.00	0.00	0.00
1,500.0	12.00	178.38	1,478.1	3,492.86	-228.8	6.5	13.1	0.00	0.00	0.00
1,600.0	12.00	178.38	1,576.0	3,395.04	-249.6	7.1	14.3	0.00	0.00	0.00
1,700.0	12.00	178.38	1,673.8	3,297.23	-270.4	7.7	15.5	0.00	0.00	0.00
1,800.0	12.00	178.38	1,771.6	3,199.41	-291.2	8.3	16.7	0.00	0.00	0.00
1,900.0	12.00	178.38	1,869.4	3,101.60	-312.0	8.8	17.8	0.00	0.00	0.00
2,000.0	12.00	178.38	1,967.2	3,003.78	-332.7	9.4	19.0	0.00	0.00	0.00
2,100.0	12.00	178.38	2,065.0	2,905.97	-353.5	10.0	20.2	0.00	0.00	0.00
2,200.0	12.00	178.38	2,162.9	2,808.15	-374.3	10.6	21.4	0.00	0.00	0.00
2,300.0	12.00	178.38	2,260.7	2,710.33	-395.1	11.2	22.6	0.00	0.00	0.00
2,400.0	12.00	178.38	2,358.5	2,612.52	-415.9	11.8	23.8	0.00	0.00	0.00
2,500.0	12.00	178.38	2,456.3	2,514.70	-436.6	12.4	25.0	0.00	0.00	0.00
2,600.0	12.00	178.38	2,554.1	2,416.89	-457.4	13.0	26.2	0.00	0.00	0.00
2,700.0	12.00	178.38	2,651.9	2,319.07	-478.2	13.6	27.4	0.00	0.00	0.00
2,800.0	12.00	178.38	2,749.7	2,221.26	-499.0	14.2	28.5	0.00	0.00	0.00
2,900.0	12.00	178.38	2,847.6	2,123.44	-519.8	14.7	29.7	0.00	0.00	0.00
3,000.0	12.00	178.38	2,945.4	2,025.63	-540.5	15.3	30.9	0.00	0.00	0.00
3,100.0	12.00	178.38	3,043.2	1,927.81	-561.3	15.9	32.1	0.00	0.00	0.00
3,200.0	12.00	178.38	3,141.0	1,830.00	-582.1	16.5	33.3	0.00	0.00	0.00
3,300.0	12.00	178.38	3,238.8	1,732.18	-602.9	17.1	34.5	0.00	0.00	0.00
3,400.0	12.00	178.38	3,336.6	1,634.37	-623.7	17.7	35.7	0.00	0.00	0.00
3,500.0	12.00	178.38	3,434.4	1,536.55	-644.4	18.3	36.9	0.00	0.00	0.00
3,600.0	12.00	178.38	3,532.3	1,438.74	-665.2	18.9	38.1	0.00	0.00	0.00
PARKMAN										
3,659.0	12.00	178.38	3,590.0	1,381.00	-677.5	19.2	38.8	0.00	0.00	0.00
3,700.0	12.00	178.38	3,630.1	1,340.92	-686.0	19.5	39.2	0.00	0.00	0.00
3,800.0	12.00	178.38	3,727.9	1,243.11	-706.8	20.0	40.4	0.00	0.00	0.00
3,900.0	12.00	178.38	3,825.7	1,145.29	-727.6	20.6	41.6	0.00	0.00	0.00
4,000.0	12.00	178.38	3,923.5	1,047.48	-748.4	21.2	42.8	0.00	0.00	0.00
4,100.0	12.00	178.38	4,021.3	949.66	-769.1	21.8	44.0	0.00	0.00	0.00
4,200.0	12.00	178.38	4,119.2	851.85	-789.9	22.4	45.2	0.00	0.00	0.00
SUSSEX										
4,292.9	12.00	178.38	4,210.0	761.00	-809.2	23.0	46.3	0.00	0.00	0.00
4,300.0	12.00	178.38	4,217.0	754.03	-810.7	23.0	46.4	0.00	0.00	0.00
4,400.0	12.00	178.38	4,314.8	656.22	-831.5	23.6	47.6	0.00	0.00	0.00
4,500.0	12.00	178.38	4,412.6	558.40	-852.3	24.2	48.8	0.00	0.00	0.00

Planning Report



Database:	EDM 5000.1 Single User Db	Local Co-ordinate Reference:	Well MILKSHAKE 23C
Company:	EXTRACTION OIL & GAS	TVD Reference:	KB-EST @ 4971.0usft (Original Well Elev)
Project:	WELD COUNTY, COLORADO (NAD 83)	MD Reference:	KB-EST @ 4971.0usft (Original Well Elev)
Site:	SEC. 32 T6N R67W 6th P.M.	North Reference:	True
Well:	MILKSHAKE 23C	Survey Calculation Method:	Minimum Curvature
Wellbore:	ORIGINAL WELLBORE		
Design:	PROPOSAL #1		

Planned Survey

MD (usft)	Inc (°)	Azi (°)	TVD (usft)	SS (usft)	+N/-S (usft)	+E/-W (usft)	Vertical Section (usft)	Dogleg Rate (°/100usft)	Build Rate (°/100usft)	Turn Rate (°/100usft)
END OF TANGENT										
4,509.0	12.00	178.38	4,421.4	549.57	-854.1	24.2	48.9	0.00	0.00	0.00
4,600.0	10.18	178.38	4,510.7	460.30	-871.6	24.7	49.9	2.00	-2.00	0.00
4,700.0	8.18	178.38	4,609.4	361.59	-887.6	25.2	50.8	2.00	-2.00	0.00
SHANNON										
4,766.2	6.86	178.38	4,675.0	296.00	-896.2	25.4	51.3	2.00	-2.00	0.00
4,800.0	6.18	178.38	4,708.6	262.38	-900.1	25.5	51.5	2.00	-2.00	0.00
4,900.0	4.18	178.38	4,808.2	162.79	-909.1	25.8	52.0	2.00	-2.00	0.00
5,000.0	2.18	178.38	4,908.1	62.95	-914.6	25.9	52.3	2.00	-2.00	0.00
5,100.0	0.18	178.38	5,008.0	-37.03	-916.7	26.0	52.4	2.00	-2.00	0.00
EOD TO VERTICAL										
5,109.0	0.00	0.00	5,017.0	-46.00	-916.7	26.0	52.4	2.00	-2.00	0.00
5,200.0	0.00	0.00	5,108.0	-137.03	-916.7	26.0	52.4	0.00	0.00	0.00
5,300.0	0.00	0.00	5,208.0	-237.03	-916.7	26.0	52.4	0.00	0.00	0.00
5,400.0	0.00	0.00	5,308.0	-337.03	-916.7	26.0	52.4	0.00	0.00	0.00
5,500.0	0.00	0.00	5,408.0	-437.03	-916.7	26.0	52.4	0.00	0.00	0.00
5,600.0	0.00	0.00	5,508.0	-537.03	-916.7	26.0	52.4	0.00	0.00	0.00
5,700.0	0.00	0.00	5,608.0	-637.03	-916.7	26.0	52.4	0.00	0.00	0.00
5,800.0	0.00	0.00	5,708.0	-737.03	-916.7	26.0	52.4	0.00	0.00	0.00
5,900.0	0.00	0.00	5,808.0	-837.03	-916.7	26.0	52.4	0.00	0.00	0.00
6,000.0	0.00	0.00	5,908.0	-937.03	-916.7	26.0	52.4	0.00	0.00	0.00
6,100.0	0.00	0.00	6,008.0	-1,037.03	-916.7	26.0	52.4	0.00	0.00	0.00
6,200.0	0.00	0.00	6,108.0	-1,137.03	-916.7	26.0	52.4	0.00	0.00	0.00
6,300.0	0.00	0.00	6,208.0	-1,237.03	-916.7	26.0	52.4	0.00	0.00	0.00
6,400.0	0.00	0.00	6,308.0	-1,337.03	-916.7	26.0	52.4	0.00	0.00	0.00
6,500.0	0.00	0.00	6,408.0	-1,437.03	-916.7	26.0	52.4	0.00	0.00	0.00
6,600.0	0.00	0.00	6,508.0	-1,537.03	-916.7	26.0	52.4	0.00	0.00	0.00
6,700.0	0.00	0.00	6,608.0	-1,637.03	-916.7	26.0	52.4	0.00	0.00	0.00
6,800.0	0.00	0.00	6,708.0	-1,737.03	-916.7	26.0	52.4	0.00	0.00	0.00
KOP (10°/100ft BUR)										
6,819.0	0.00	0.00	6,727.0	-1,756.00	-916.7	26.0	52.4	0.00	0.00	0.00
6,900.0	8.10	270.19	6,807.8	-1,836.76	-916.7	20.3	58.1	10.00	10.00	0.00
7,000.0	18.10	270.19	6,905.0	-1,934.03	-916.6	-2.4	80.7	10.00	10.00	0.00
SHARON SPRINGS										
7,042.6	22.36	270.19	6,945.0	-1,974.00	-916.6	-17.1	95.4	10.00	10.00	0.00
NIOBRARA										
7,086.6	26.76	270.19	6,985.0	-2,014.00	-916.5	-35.4	113.6	10.00	10.00	0.00
7,100.0	28.10	270.19	6,996.9	-2,025.89	-916.5	-41.5	119.7	10.00	10.00	0.00
7,200.0	38.10	270.19	7,080.6	-2,109.56	-916.3	-96.1	174.0	10.00	10.00	0.00
NIO B										
7,225.1	40.61	270.19	7,100.0	-2,129.00	-916.2	-112.0	189.9	10.00	10.00	0.00
7,300.0	48.10	270.19	7,153.5	-2,182.48	-916.1	-164.3	242.0	10.00	10.00	0.00
7,400.0	58.10	270.19	7,213.5	-2,242.45	-915.8	-244.2	321.6	10.00	10.00	0.00
7,500.0	68.10	270.19	7,258.6	-2,287.64	-915.5	-333.3	410.3	10.00	10.00	0.00
FORT HAYS										
7,503.7	68.46	270.19	7,260.0	-2,289.00	-915.5	-336.7	413.7	10.00	10.00	0.00
7,600.0	78.10	270.19	7,287.7	-2,316.68	-915.2	-428.8	505.5	10.00	10.00	0.00
CODELL										
7,611.8	79.28	270.19	7,290.0	-2,319.00	-915.1	-440.4	517.0	10.00	10.00	0.00
7,700.0	88.10	270.19	7,299.7	-2,328.68	-914.8	-528.0	604.2	10.00	10.00	0.00
HZ LANDING PNT: 685ft FSL & 460ft FEL of Sec 31										
7,719.0	90.00	270.19	7,300.0	-2,329.00	-914.8	-547.0	623.2	10.00	10.00	0.00

Planning Report



Database:	EDM 5000.1 Single User Db	Local Co-ordinate Reference:	Well MILKSHAKE 23C
Company:	EXTRACTION OIL & GAS	TVD Reference:	KB-EST @ 4971.0usft (Original Well Elev)
Project:	WELD COUNTY, COLORADO (NAD 83)	MD Reference:	KB-EST @ 4971.0usft (Original Well Elev)
Site:	SEC. 32 T6N R67W 6th P.M.	North Reference:	True
Well:	MILKSHAKE 23C	Survey Calculation Method:	Minimum Curvature
Wellbore:	ORIGINAL WELLBORE		
Design:	PROPOSAL #1		

Planned Survey										
MD (usft)	Inc (°)	Azi (°)	TVD (usft)	SS (usft)	+N/-S (usft)	+E/-W (usft)	Vertical Section (usft)	Dogleg Rate (°/100usft)	Build Rate (°/100usft)	Turn Rate (°/100usft)
7,800.0	90.00	270.19	7,300.0	-2,329.00	-914.5	-628.0	703.8	0.00	0.00	0.00
7,900.0	90.00	270.19	7,300.0	-2,329.00	-914.2	-728.0	803.4	0.00	0.00	0.00
8,000.0	90.00	270.19	7,300.0	-2,329.00	-913.8	-828.0	903.0	0.00	0.00	0.00
8,100.0	90.00	270.19	7,300.0	-2,329.01	-913.5	-928.0	1,002.6	0.00	0.00	0.00
8,200.0	90.00	270.19	7,300.0	-2,329.01	-913.2	-1,028.0	1,102.2	0.00	0.00	0.00
8,300.0	90.00	270.19	7,300.0	-2,329.01	-912.8	-1,128.0	1,201.8	0.00	0.00	0.00
8,400.0	90.00	270.19	7,300.0	-2,329.01	-912.5	-1,228.0	1,301.4	0.00	0.00	0.00
8,500.0	90.00	270.19	7,300.0	-2,329.01	-912.2	-1,328.0	1,401.1	0.00	0.00	0.00
8,600.0	90.00	270.19	7,300.0	-2,329.01	-911.8	-1,428.0	1,500.7	0.00	0.00	0.00
8,700.0	90.00	270.19	7,300.0	-2,329.01	-911.5	-1,528.0	1,600.3	0.00	0.00	0.00
8,800.0	90.00	270.19	7,300.0	-2,329.01	-911.2	-1,627.9	1,699.9	0.00	0.00	0.00
8,900.0	90.00	270.19	7,300.0	-2,329.02	-910.8	-1,727.9	1,799.5	0.00	0.00	0.00
9,000.0	90.00	270.19	7,300.0	-2,329.02	-910.5	-1,827.9	1,899.1	0.00	0.00	0.00
9,100.0	90.00	270.19	7,300.0	-2,329.02	-910.1	-1,927.9	1,998.7	0.00	0.00	0.00
9,200.0	90.00	270.19	7,300.0	-2,329.02	-909.8	-2,027.9	2,098.3	0.00	0.00	0.00
9,300.0	90.00	270.19	7,300.0	-2,329.02	-909.5	-2,127.9	2,197.9	0.00	0.00	0.00
9,400.0	90.00	270.19	7,300.0	-2,329.02	-909.1	-2,227.9	2,297.5	0.00	0.00	0.00
9,500.0	90.00	270.19	7,300.0	-2,329.02	-908.8	-2,327.9	2,397.1	0.00	0.00	0.00
9,600.0	90.00	270.19	7,300.0	-2,329.02	-908.5	-2,427.9	2,496.7	0.00	0.00	0.00
9,700.0	90.00	270.19	7,300.0	-2,329.02	-908.1	-2,527.9	2,596.3	0.00	0.00	0.00
9,800.0	90.00	270.19	7,300.0	-2,329.03	-907.8	-2,627.9	2,695.9	0.00	0.00	0.00
9,900.0	90.00	270.19	7,300.0	-2,329.03	-907.5	-2,727.9	2,795.5	0.00	0.00	0.00
10,000.0	90.00	270.19	7,300.0	-2,329.03	-907.1	-2,827.9	2,895.1	0.00	0.00	0.00
10,100.0	90.00	270.19	7,300.0	-2,329.03	-906.8	-2,927.9	2,994.7	0.00	0.00	0.00
10,200.0	90.00	270.19	7,300.0	-2,329.03	-906.4	-3,027.9	3,094.3	0.00	0.00	0.00
10,300.0	90.00	270.19	7,300.0	-2,329.03	-906.1	-3,127.9	3,193.9	0.00	0.00	0.00
10,400.0	90.00	270.19	7,300.0	-2,329.03	-905.8	-3,227.9	3,293.5	0.00	0.00	0.00
10,500.0	90.00	270.19	7,300.0	-2,329.03	-905.4	-3,327.9	3,393.1	0.00	0.00	0.00
10,600.0	90.00	270.19	7,300.0	-2,329.03	-905.1	-3,427.9	3,492.8	0.00	0.00	0.00
10,700.0	90.00	270.19	7,300.0	-2,329.03	-904.8	-3,527.9	3,592.4	0.00	0.00	0.00
10,800.0	90.00	270.19	7,300.0	-2,329.03	-904.4	-3,627.9	3,692.0	0.00	0.00	0.00
10,900.0	90.00	270.19	7,300.0	-2,329.03	-904.1	-3,727.9	3,791.6	0.00	0.00	0.00
11,000.0	90.00	270.19	7,300.0	-2,329.03	-903.8	-3,827.9	3,891.2	0.00	0.00	0.00
11,100.0	90.00	270.19	7,300.0	-2,329.03	-903.4	-3,927.9	3,990.8	0.00	0.00	0.00
11,200.0	90.00	270.19	7,300.0	-2,329.03	-903.1	-4,027.9	4,090.4	0.00	0.00	0.00
11,300.0	90.00	270.19	7,300.0	-2,329.03	-902.8	-4,127.9	4,190.0	0.00	0.00	0.00
11,400.0	90.00	270.19	7,300.0	-2,329.03	-902.4	-4,227.9	4,289.6	0.00	0.00	0.00
11,500.0	90.00	270.19	7,300.0	-2,329.04	-902.1	-4,327.9	4,389.2	0.00	0.00	0.00
11,600.0	90.00	270.19	7,300.0	-2,329.04	-901.7	-4,427.9	4,488.8	0.00	0.00	0.00
11,700.0	90.00	270.19	7,300.0	-2,329.04	-901.4	-4,527.9	4,588.4	0.00	0.00	0.00
11,800.0	90.00	270.19	7,300.0	-2,329.04	-901.1	-4,627.9	4,688.0	0.00	0.00	0.00
11,900.0	90.00	270.19	7,300.0	-2,329.04	-900.7	-4,727.9	4,787.6	0.00	0.00	0.00
12,000.0	90.00	270.19	7,300.0	-2,329.04	-900.4	-4,827.9	4,887.2	0.00	0.00	0.00
12,100.0	90.00	270.19	7,300.0	-2,329.04	-900.1	-4,927.9	4,986.8	0.00	0.00	0.00
12,200.0	90.00	270.19	7,300.0	-2,329.04	-899.7	-5,027.9	5,086.4	0.00	0.00	0.00
12,300.0	90.00	270.19	7,300.0	-2,329.04	-899.4	-5,127.9	5,186.0	0.00	0.00	0.00
12,400.0	90.00	270.19	7,300.0	-2,329.04	-899.1	-5,227.9	5,285.6	0.00	0.00	0.00
12,500.0	90.00	270.19	7,300.0	-2,329.04	-898.7	-5,327.9	5,385.2	0.00	0.00	0.00
12,600.0	90.00	270.19	7,300.0	-2,329.04	-898.4	-5,427.9	5,484.8	0.00	0.00	0.00
12,700.0	90.00	270.19	7,300.0	-2,329.04	-898.0	-5,527.9	5,584.5	0.00	0.00	0.00
12,800.0	90.00	270.19	7,300.0	-2,329.04	-897.7	-5,627.9	5,684.1	0.00	0.00	0.00
12,900.0	90.00	270.19	7,300.0	-2,329.04	-897.4	-5,727.9	5,783.7	0.00	0.00	0.00
13,000.0	90.00	270.19	7,300.0	-2,329.04	-897.0	-5,827.9	5,883.3	0.00	0.00	0.00
13,100.0	90.00	270.19	7,300.0	-2,329.04	-896.7	-5,927.9	5,982.9	0.00	0.00	0.00

Planning Report



Database:	EDM 5000.1 Single User Db	Local Co-ordinate Reference:	Well MILKSHAKE 23C
Company:	EXTRACTION OIL & GAS	TVD Reference:	KB-EST @ 4971.0usft (Original Well Elev)
Project:	WELD COUNTY, COLORADO (NAD 83)	MD Reference:	KB-EST @ 4971.0usft (Original Well Elev)
Site:	SEC. 32 T6N R67W 6th P.M.	North Reference:	True
Well:	MILKSHAKE 23C	Survey Calculation Method:	Minimum Curvature
Wellbore:	ORIGINAL WELLBORE		
Design:	PROPOSAL #1		

Planned Survey										
MD (usft)	Inc (°)	Azi (°)	TVD (usft)	SS (usft)	+N/-S (usft)	+E/-W (usft)	Vertical Section (usft)	Dogleg Rate (°/100usft)	Build Rate (°/100usft)	Turn Rate (°/100usft)
13,200.0	90.00	270.19	7,300.0	-2,329.04	-896.4	-6,027.9	6,082.5	0.00	0.00	0.00
13,300.0	90.00	270.19	7,300.0	-2,329.04	-896.0	-6,127.9	6,182.1	0.00	0.00	0.00
13,400.0	90.00	270.19	7,300.0	-2,329.04	-895.7	-6,227.9	6,281.7	0.00	0.00	0.00
13,500.0	90.00	270.19	7,300.0	-2,329.04	-895.4	-6,327.9	6,381.3	0.00	0.00	0.00
13,600.0	90.00	270.19	7,300.0	-2,329.04	-895.0	-6,427.9	6,480.9	0.00	0.00	0.00
13,700.0	90.00	270.19	7,300.0	-2,329.04	-894.7	-6,527.9	6,580.5	0.00	0.00	0.00
13,800.0	90.00	270.19	7,300.0	-2,329.03	-894.3	-6,627.9	6,680.1	0.00	0.00	0.00
13,900.0	90.00	270.19	7,300.0	-2,329.03	-894.0	-6,727.9	6,779.7	0.00	0.00	0.00
14,000.0	90.00	270.19	7,300.0	-2,329.03	-893.7	-6,827.9	6,879.3	0.00	0.00	0.00
14,100.0	90.00	270.19	7,300.0	-2,329.03	-893.3	-6,927.9	6,978.9	0.00	0.00	0.00
14,200.0	90.00	270.19	7,300.0	-2,329.03	-893.0	-7,027.9	7,078.5	0.00	0.00	0.00
14,300.0	90.00	270.19	7,300.0	-2,329.03	-892.7	-7,127.9	7,178.1	0.00	0.00	0.00
14,400.0	90.00	270.19	7,300.0	-2,329.03	-892.3	-7,227.9	7,277.7	0.00	0.00	0.00
14,500.0	90.00	270.19	7,300.0	-2,329.03	-892.0	-7,327.9	7,377.3	0.00	0.00	0.00
14,600.0	90.00	270.19	7,300.0	-2,329.03	-891.7	-7,427.9	7,476.9	0.00	0.00	0.00
14,700.0	90.00	270.19	7,300.0	-2,329.03	-891.3	-7,527.9	7,576.5	0.00	0.00	0.00
14,800.0	90.00	270.19	7,300.0	-2,329.03	-891.0	-7,627.9	7,676.2	0.00	0.00	0.00
14,900.0	90.00	270.19	7,300.0	-2,329.03	-890.6	-7,727.9	7,775.8	0.00	0.00	0.00
15,000.0	90.00	270.19	7,300.0	-2,329.03	-890.3	-7,827.9	7,875.4	0.00	0.00	0.00
15,100.0	90.00	270.19	7,300.0	-2,329.03	-890.0	-7,927.9	7,975.0	0.00	0.00	0.00
15,200.0	90.00	270.19	7,300.0	-2,329.03	-889.6	-8,027.9	8,074.6	0.00	0.00	0.00
15,300.0	90.00	270.19	7,300.0	-2,329.03	-889.3	-8,127.9	8,174.2	0.00	0.00	0.00
15,400.0	90.00	270.19	7,300.0	-2,329.02	-889.0	-8,227.9	8,273.8	0.00	0.00	0.00
15,500.0	90.00	270.19	7,300.0	-2,329.02	-888.6	-8,327.9	8,373.4	0.00	0.00	0.00
15,600.0	90.00	270.19	7,300.0	-2,329.02	-888.3	-8,427.9	8,473.0	0.00	0.00	0.00
15,700.0	90.00	270.19	7,300.0	-2,329.02	-888.0	-8,527.9	8,572.6	0.00	0.00	0.00
15,800.0	90.00	270.19	7,300.0	-2,329.02	-887.6	-8,627.9	8,672.2	0.00	0.00	0.00
15,900.0	90.00	270.19	7,300.0	-2,329.02	-887.3	-8,727.9	8,771.8	0.00	0.00	0.00
16,000.0	90.00	270.19	7,300.0	-2,329.02	-886.9	-8,827.9	8,871.4	0.00	0.00	0.00
16,100.0	90.00	270.19	7,300.0	-2,329.02	-886.6	-8,927.9	8,971.0	0.00	0.00	0.00
16,200.0	90.00	270.19	7,300.0	-2,329.02	-886.3	-9,027.9	9,070.6	0.00	0.00	0.00
16,300.0	90.00	270.19	7,300.0	-2,329.02	-885.9	-9,127.9	9,170.2	0.00	0.00	0.00
16,400.0	90.00	270.19	7,300.0	-2,329.01	-885.6	-9,227.9	9,269.8	0.00	0.00	0.00
16,500.0	90.00	270.19	7,300.0	-2,329.01	-885.3	-9,327.9	9,369.4	0.00	0.00	0.00
16,600.0	90.00	270.19	7,300.0	-2,329.01	-884.9	-9,427.9	9,469.0	0.00	0.00	0.00
16,700.0	90.00	270.19	7,300.0	-2,329.01	-884.6	-9,527.9	9,568.6	0.00	0.00	0.00
16,800.0	90.00	270.19	7,300.0	-2,329.01	-884.2	-9,627.9	9,668.2	0.00	0.00	0.00
16,900.0	90.00	270.19	7,300.0	-2,329.01	-883.9	-9,727.9	9,767.9	0.00	0.00	0.00
17,000.0	90.00	270.19	7,300.0	-2,329.01	-883.6	-9,827.9	9,867.5	0.00	0.00	0.00
17,100.0	90.00	270.19	7,300.0	-2,329.01	-883.2	-9,927.9	9,967.1	0.00	0.00	0.00
17,200.0	90.00	270.19	7,300.0	-2,329.00	-882.9	-10,027.9	10,066.7	0.00	0.00	0.00
17,300.0	90.00	270.19	7,300.0	-2,329.00	-882.6	-10,127.9	10,166.3	0.00	0.00	0.00
17,400.0	90.00	270.19	7,300.0	-2,329.00	-882.2	-10,227.9	10,265.9	0.00	0.00	0.00
BHL: 685ft FSL & 460ft FWL of Sec 36										
17,454.6	90.00	270.19	7,300.0	-2,329.00	-882.0	-10,282.5	10,320.3	0.00	0.00	0.00

Database:	EDM 5000.1 Single User Db	Local Co-ordinate Reference:	Well MILKSHAKE 23C
Company:	EXTRACTION OIL & GAS	TVD Reference:	KB-EST @ 4971.0usft (Original Well Elev)
Project:	WELD COUNTY, COLORADO (NAD 83)	MD Reference:	KB-EST @ 4971.0usft (Original Well Elev)
Site:	SEC. 32 T6N R67W 6th P.M.	North Reference:	True
Well:	MILKSHAKE 23C	Survey Calculation Method:	Minimum Curvature
Wellbore:	ORIGINAL WELLBORE		
Design:	PROPOSAL #1		

Formations					
MD (usft)	TVD (usft)	Name	Lithology	Dip (°)	Dip Direction (°)
3,659.0	3,590.0	PARKMAN		0.00	
4,292.9	4,210.0	SUSSEX		0.00	
4,766.2	4,675.0	SHANNON		0.00	
7,042.6	6,945.0	SHARON SPRINGS		0.00	
7,086.6	6,985.0	NIOBRARA		0.00	
7,225.1	7,100.0	NIO B		0.00	
7,503.7	7,260.0	FORT HAYS		0.00	
7,611.8	7,290.0	CODELL		0.00	

Plan Annotations				
MD (usft)	TVD (usft)	Local Coordinates		Comment
		+N/-S (usft)	+E/-W (usft)	
0.0	0.0	0.0	0.0	1597ft FSL & 153ft FWL of Sec 32
100.0	100.0	0.0	0.0	START NUDGE (2°/100ft BUR)
699.9	695.6	-62.6	1.8	EOB TO 12° INC
4,509.0	4,421.4	-854.1	24.2	END OF TANGENT
5,109.0	5,017.0	-916.7	26.0	EOD TO VERTICAL
6,819.0	6,727.0	-916.7	26.0	KOP (10°/100ft BUR)
7,719.0	7,300.0	-914.8	-547.0	HZ LANDING PNT: 685ft FSL & 460ft FEL of Sec 31
17,454.6	7,300.0	-882.0	-10,282.5	BHL: 685ft FSL & 460ft FWL of Sec 36