



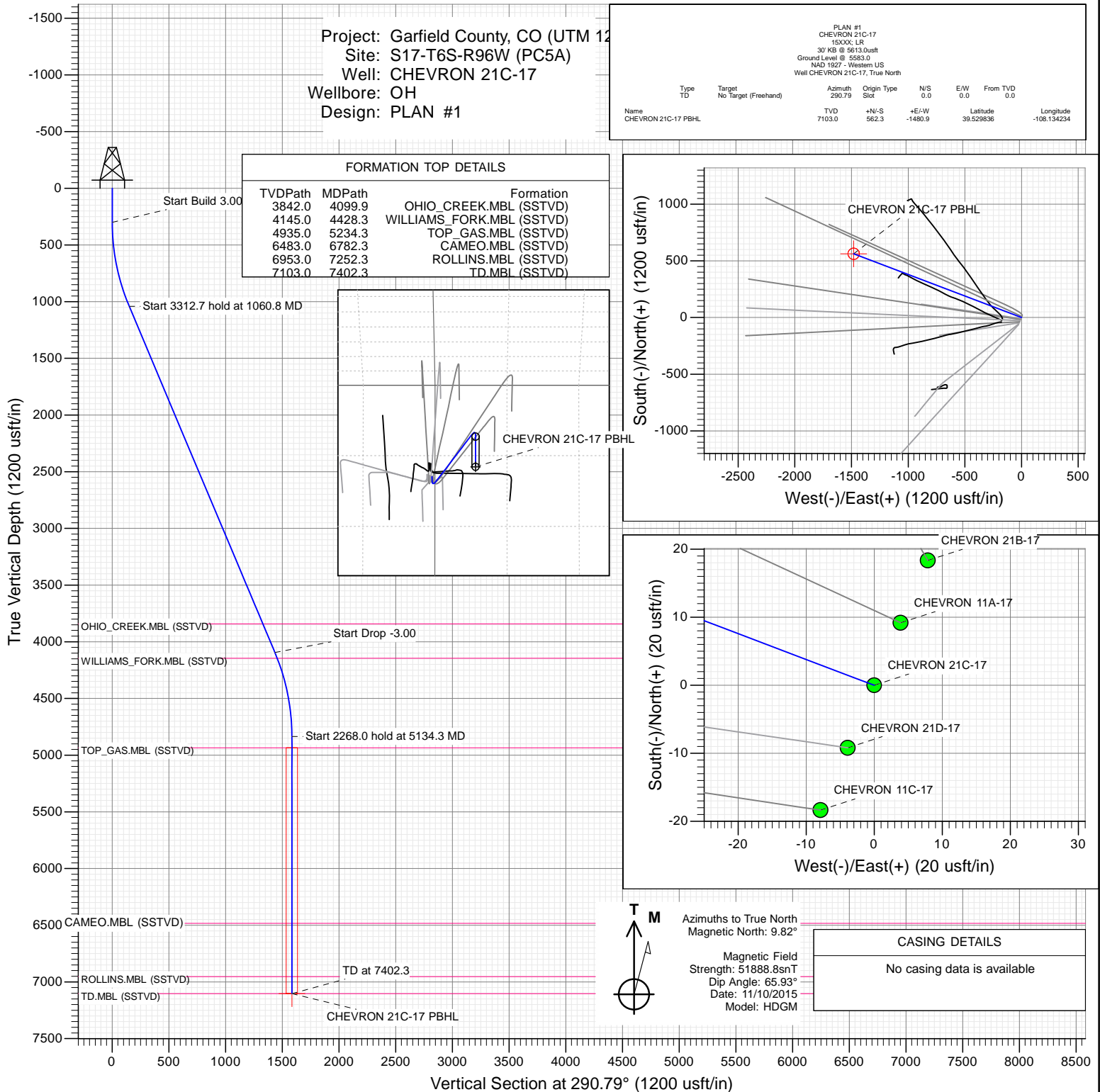
## SECTION DETAILS

Sec	MD	Inc	Azi	TVD	+N/-S	+E/-W	Dleg	TFace	VSec	Target
1	0.0	0.00	0.00	0.0	0.0	0.0	0.00	0.00	0.0	
2	300.0	0.00	0.00	300.0	0.0	0.0	0.00	0.00	0.0	
3	1060.8	22.82	290.79	1040.8	53.1	-139.8	3.00	290.79	149.5	
4	4373.5	22.82	290.79	4094.2	509.2	-1341.1	0.00	0.00	1434.5	
5	5134.3	0.00	0.00	4835.0	562.3	-1480.9	3.00	180.00	1584.1	
6	7402.3	0.00	0.00	7103.0	562.3	-1480.9	0.00	0.00	1584.1	CHEVRON 21C-17 PBHL

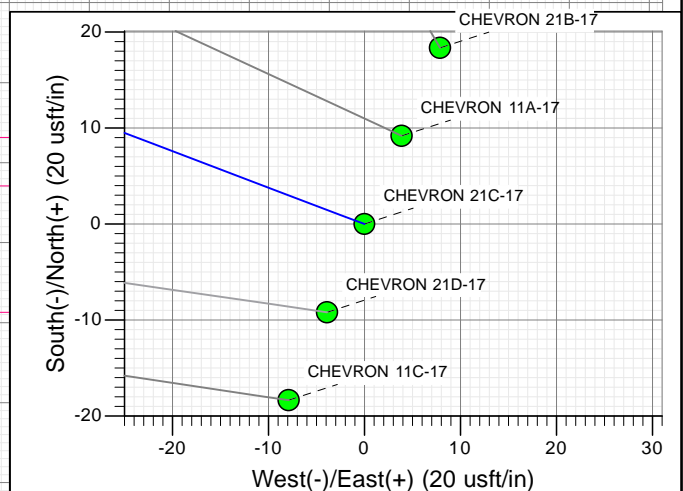
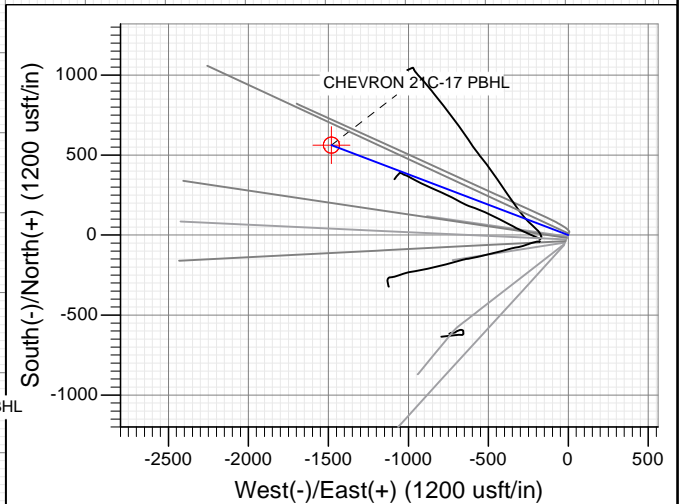
Project: Garfield County, CO (UTM 12  
Site: S17-T6S-R96W (PC5A)  
Well: CHEVRON 21C-17  
Wellbore: OH  
Design: PLAN #1

## FORMATION TOP DETAILS

TVDPath	MDPath	Formation
3842.0	4099.9	OHIO_CREEK.MBL (SSTVD)
4145.0	4428.3	WILLIAMS_FORK.MBL (SSTVD)
4935.0	5234.3	TOP_GAS.MBL (SSTVD)
6483.0	6782.3	CAMEO.MBL (SSTVD)
6953.0	7252.3	ROLLINS.MBL (SSTVD)
7103.0	7402.3	TD.MBL (SSTVD)



Type	Target	Azimuth	Origin Type	N/S	E/W	From TVD
TD	No Target (Freehand)	290.79	Slot	0.0	0.0	0.0
Name		TVD	+N/-S	+E/-W	Latitude	Longitude
CHEVRON 21C-17 PBHL		7103.0	562.3	-1480.9	39.529836	-108.134234



Azimuths to True North  
Magnetic North: 9.82°

Magnetic Field  
Strength: 51888.8snT  
Dip Angle: 65.93°  
Date: 11/10/2015  
Model: HDGM

## CASING DETAILS

No casing data is available

## WELL DETAILS: CHEVRON 21C-17

Ground Level: 5583.0  
+N/-S +E/-W Northing Easting Latitude Longitude  
0.0 0.0 14367203.20 2450038.10 39.528293 -108.128986



## Planning Report

<b>Database:</b>	USA EDM 5000 Multi Users DB	<b>Local Co-ordinate Reference:</b>	Well CHEVRON 21C-17
<b>Company:</b>	Caerus Oil & Gas	<b>TVD Reference:</b>	30' KB @ 5613.0usft
<b>Project:</b>	Garfield County, CO (UTM 12N)	<b>MD Reference:</b>	30' KB @ 5613.0usft
<b>Site:</b>	S17-T6S-R96W (PC5A)	<b>North Reference:</b>	True
<b>Well:</b>	CHEVRON 21C-17	<b>Survey Calculation Method:</b>	Minimum Curvature
<b>Wellbore:</b>	OH		
<b>Design:</b>	PLAN #1		

<b>Project</b>	Garfield County, CO (UTM 12N)		
<b>Map System:</b>	Universal Transverse Mercator (US Survey Feet)	<b>System Datum:</b>	Mean Sea Level
<b>Geo Datum:</b>	NAD 1927 - Western US		
<b>Map Zone:</b>	Zone 12N (114 W to 108 W)		

Site		S17-T6S-R96W (PC5A)			
Site Position:		Northing:	14,367,212.50 usft	Latitude:	39.528318
From:	Map	Easting:	2,450,041.70 usft	Longitude:	-108.128972
Position Uncertainty:	0.0 usft	Slot Radius:	13-3/16 "	Grid Convergence:	1.83 °

Well	CHEVRON 21C-17					
Well Position	+N/-S	0.0 usft	Northing:	14,367,203.20 usft	Latitude:	39.528293
	+E/-W	0.0 usft	Easting:	2,450,038.10 usft	Longitude:	-108.128986
Position Uncertainty		0.0 usft	Wellhead Elevation:	0.0 usft	Ground Level:	5,583.0 usft

<b>Wellbore</b>	OH				
<b>Magnetics</b>	<b>Model Name</b>	<b>Sample Date</b>	<b>Declination (°)</b>	<b>Dip Angle (°)</b>	<b>Field Strength (nT)</b>
	HDGM	11/10/2015	9.82	65.93	51,889

<b>Design</b>	PLAN #1				
<b>Audit Notes:</b>					
<b>Version:</b>	<b>Phase:</b>	PLAN	<b>Tie On Depth:</b>	0.0	
<b>Vertical Section:</b>	<b>Depth From (TVD) (usft)</b>	<b>+N/-S (usft)</b>	<b>+E/-W (usft)</b>	<b>Direction (°)</b>	
	0.0	0.0	0.0	290.79	

<b>Plan Sections</b>										
Measured Depth (usft)	Inclination (°)	Azimuth (°)	Vertical Depth (usft)	+N/-S (usft)	+E/-W (usft)	Dogleg Rate (°/100usft)	Build Rate (°/100usft)	Turn Rate (°/100usft)	TFO (°)	Target
0.0	0.00	0.00	0.0	0.0	0.0	0.00	0.00	0.00	0.00	
300.0	0.00	0.00	300.0	0.0	0.0	0.00	0.00	0.00	0.00	
1,060.8	22.82	290.79	1,040.8	53.1	-139.8	3.00	3.00	0.00	290.79	
4,373.5	22.82	290.79	4,094.2	509.2	-1,341.1	0.00	0.00	0.00	0.00	
5,134.3	0.00	0.00	4,835.0	562.3	-1,480.9	3.00	-3.00	0.00	180.00	
7,402.3	0.00	0.00	7,103.0	562.3	-1,480.9	0.00	0.00	0.00	0.00	CHEVRON 21C-17 P

# Planning Report

<b>Database:</b>	USA EDM 5000 Multi Users DB	<b>Local Co-ordinate Reference:</b>	Well CHEVRON 21C-17
<b>Company:</b>	Caerus Oil & Gas	<b>TVD Reference:</b>	30' KB @ 5613.0usft
<b>Project:</b>	Garfield County, CO (UTM 12N)	<b>MD Reference:</b>	30' KB @ 5613.0usft
<b>Site:</b>	S17-T6S-R96W (PC5A)	<b>North Reference:</b>	True
<b>Well:</b>	CHEVRON 21C-17	<b>Survey Calculation Method:</b>	Minimum Curvature
<b>Wellbore:</b>	OH		
<b>Design:</b>	PLAN #1		

Planned Survey									
Measured Depth (usft)	Inclination (°)	Azimuth (°)	Vertical Depth (usft)	+N/-S (usft)	+E/-W (usft)	Vertical Section (usft)	Dogleg Rate (°/100usft)	Build Rate (°/100u)	Comments / Formations
0.0	0.00	0.00	0.0	0.0	0.0	0.0	0.00	0.00	
100.0	0.00	0.00	100.0	0.0	0.0	0.0	0.00	0.00	
200.0	0.00	0.00	200.0	0.0	0.0	0.0	0.00	0.00	
300.0	0.00	0.00	300.0	0.0	0.0	0.0	0.00	0.00	Start Build 3.00
400.0	3.00	290.79	400.0	0.9	-2.4	2.6	3.00	3.00	
500.0	6.00	290.79	499.6	3.7	-9.8	10.5	3.00	3.00	
600.0	9.00	290.79	598.8	8.3	-22.0	23.5	3.00	3.00	
700.0	12.00	290.79	697.1	14.8	-39.0	41.7	3.00	3.00	
800.0	15.00	290.79	794.3	23.1	-60.8	65.1	3.00	3.00	
900.0	18.00	290.79	890.2	33.2	-87.4	93.5	3.00	3.00	
1,000.0	21.00	290.79	984.4	45.0	-118.6	126.9	3.00	3.00	
1,060.8	22.82	290.79	1,040.8	53.1	-139.8	149.5	3.00	3.00	Start 3312.7 hold at 1060.8 MD
1,100.0	22.82	290.79	1,077.0	58.5	-154.0	164.7	0.00	0.00	
1,200.0	22.82	290.79	1,169.1	72.3	-190.3	203.5	0.00	0.00	
1,300.0	22.82	290.79	1,261.3	86.0	-226.5	242.3	0.00	0.00	
1,400.0	22.82	290.79	1,353.5	99.8	-262.8	281.1	0.00	0.00	
1,500.0	22.82	290.79	1,445.6	113.6	-299.1	319.9	0.00	0.00	
1,600.0	22.82	290.79	1,537.8	127.3	-335.3	358.7	0.00	0.00	
1,700.0	22.82	290.79	1,630.0	141.1	-371.6	397.5	0.00	0.00	
1,800.0	22.82	290.79	1,722.2	154.9	-407.9	436.3	0.00	0.00	
1,900.0	22.82	290.79	1,814.3	168.6	-444.1	475.1	0.00	0.00	
2,000.0	22.82	290.79	1,906.5	182.4	-480.4	513.9	0.00	0.00	
2,100.0	22.82	290.79	1,998.7	196.2	-516.7	552.6	0.00	0.00	
2,200.0	22.82	290.79	2,090.8	210.0	-552.9	591.4	0.00	0.00	
2,300.0	22.82	290.79	2,183.0	223.7	-589.2	630.2	0.00	0.00	
2,400.0	22.82	290.79	2,275.2	237.5	-625.4	669.0	0.00	0.00	
2,500.0	22.82	290.79	2,367.3	251.3	-661.7	707.8	0.00	0.00	
2,600.0	22.82	290.79	2,459.5	265.0	-698.0	746.6	0.00	0.00	
2,700.0	22.82	290.79	2,551.7	278.8	-734.2	785.4	0.00	0.00	
2,800.0	22.82	290.79	2,643.9	292.6	-770.5	824.2	0.00	0.00	
2,900.0	22.82	290.79	2,736.0	306.3	-806.8	863.0	0.00	0.00	
3,000.0	22.82	290.79	2,828.2	320.1	-843.0	901.8	0.00	0.00	
3,100.0	22.82	290.79	2,920.4	333.9	-879.3	940.5	0.00	0.00	
3,200.0	22.82	290.79	3,012.5	347.7	-915.6	979.3	0.00	0.00	
3,300.0	22.82	290.79	3,104.7	361.4	-951.8	1,018.1	0.00	0.00	
3,400.0	22.82	290.79	3,196.9	375.2	-988.1	1,056.9	0.00	0.00	
3,500.0	22.82	290.79	3,289.1	389.0	-1,024.3	1,095.7	0.00	0.00	
3,600.0	22.82	290.79	3,381.2	402.7	-1,060.6	1,134.5	0.00	0.00	
3,700.0	22.82	290.79	3,473.4	416.5	-1,096.9	1,173.3	0.00	0.00	
3,800.0	22.82	290.79	3,565.6	430.3	-1,133.1	1,212.1	0.00	0.00	
3,900.0	22.82	290.79	3,657.7	444.0	-1,169.4	1,250.9	0.00	0.00	
4,000.0	22.82	290.79	3,749.9	457.8	-1,205.7	1,289.7	0.00	0.00	
4,099.9	22.82	290.79	3,842.0	471.6	-1,241.9	1,328.4	0.00	0.00	OHIO_CREEK.MBL (SSTVD)
4,100.0	22.82	290.79	3,842.1	471.6	-1,241.9	1,328.5	0.00	0.00	
4,200.0	22.82	290.79	3,934.2	485.4	-1,278.2	1,367.2	0.00	0.00	
4,300.0	22.82	290.79	4,026.4	499.1	-1,314.5	1,406.0	0.00	0.00	
4,373.5	22.82	290.79	4,094.2	509.2	-1,341.1	1,434.5	0.00	0.00	Start Drop -3.00
4,400.0	22.03	290.79	4,118.7	512.8	-1,350.6	1,444.7	3.00	-3.00	
4,428.3	21.18	290.79	4,145.0	516.5	-1,360.3	1,455.1	3.00	-3.00	WILLIAMS_FORK.MBL (SSTVD)
4,500.0	19.03	290.79	4,212.3	525.3	-1,383.3	1,479.7	3.00	-3.00	
4,600.0	16.03	290.79	4,307.6	536.0	-1,411.5	1,509.8	3.00	-3.00	
4,700.0	13.03	290.79	4,404.4	544.9	-1,434.9	1,534.9	3.00	-3.00	

## Planning Report

<b>Database:</b>	USA EDM 5000 Multi Users DB	<b>Local Co-ordinate Reference:</b>	Well CHEVRON 21C-17
<b>Company:</b>	Caerus Oil & Gas	<b>TVD Reference:</b>	30' KB @ 5613.0usft
<b>Project:</b>	Garfield County, CO (UTM 12N)	<b>MD Reference:</b>	30' KB @ 5613.0usft
<b>Site:</b>	S17-T6S-R96W (PC5A)	<b>North Reference:</b>	True
<b>Well:</b>	CHEVRON 21C-17	<b>Survey Calculation Method:</b>	Minimum Curvature
<b>Wellbore:</b>	OH		
<b>Design:</b>	PLAN #1		

### Planned Survey

Measured Depth (usft)	Inclination (°)	Azimuth (°)	Vertical Depth (usft)	+N/-S (usft)	+E/-W (usft)	Vertical Section (usft)	Dogleg Rate (°/100usft)	Build Rate (°/100u)	Comments / Formations
4,800.0	10.03	290.79	4,502.4	552.0	-1,453.6	1,554.9	3.00	-3.00	
4,900.0	7.03	290.79	4,601.3	557.2	-1,467.5	1,569.7	3.00	-3.00	
5,000.0	4.03	290.79	4,700.8	560.7	-1,476.5	1,579.4	3.00	-3.00	
5,100.0	1.03	290.79	4,800.7	562.2	-1,480.6	1,583.8	3.00	-3.00	
5,134.3	0.00	0.00	4,835.0	562.3	-1,480.9	1,584.1	3.00	-3.00	Start 2268.0 hold at 5134.3 MD
5,200.0	0.00	0.00	4,900.7	562.3	-1,480.9	1,584.1	0.00	0.00	
5,234.3	0.00	0.00	4,935.0	562.3	-1,480.9	1,584.1	0.00	0.00	TOP_GAS.MBL (SSTVD)
5,300.0	0.00	0.00	5,000.7	562.3	-1,480.9	1,584.1	0.00	0.00	
5,400.0	0.00	0.00	5,100.7	562.3	-1,480.9	1,584.1	0.00	0.00	
5,500.0	0.00	0.00	5,200.7	562.3	-1,480.9	1,584.1	0.00	0.00	
5,600.0	0.00	0.00	5,300.7	562.3	-1,480.9	1,584.1	0.00	0.00	
5,700.0	0.00	0.00	5,400.7	562.3	-1,480.9	1,584.1	0.00	0.00	
5,800.0	0.00	0.00	5,500.7	562.3	-1,480.9	1,584.1	0.00	0.00	
5,900.0	0.00	0.00	5,600.7	562.3	-1,480.9	1,584.1	0.00	0.00	
6,000.0	0.00	0.00	5,700.7	562.3	-1,480.9	1,584.1	0.00	0.00	
6,100.0	0.00	0.00	5,800.7	562.3	-1,480.9	1,584.1	0.00	0.00	
6,200.0	0.00	0.00	5,900.7	562.3	-1,480.9	1,584.1	0.00	0.00	
6,300.0	0.00	0.00	6,000.7	562.3	-1,480.9	1,584.1	0.00	0.00	
6,400.0	0.00	0.00	6,100.7	562.3	-1,480.9	1,584.1	0.00	0.00	
6,500.0	0.00	0.00	6,200.7	562.3	-1,480.9	1,584.1	0.00	0.00	
6,600.0	0.00	0.00	6,300.7	562.3	-1,480.9	1,584.1	0.00	0.00	
6,700.0	0.00	0.00	6,400.7	562.3	-1,480.9	1,584.1	0.00	0.00	
6,782.3	0.00	0.00	6,483.0	562.3	-1,480.9	1,584.1	0.00	0.00	CAMEO.MBL (SSTVD)
6,800.0	0.00	0.00	6,500.7	562.3	-1,480.9	1,584.1	0.00	0.00	
6,900.0	0.00	0.00	6,600.7	562.3	-1,480.9	1,584.1	0.00	0.00	
7,000.0	0.00	0.00	6,700.7	562.3	-1,480.9	1,584.1	0.00	0.00	
7,100.0	0.00	0.00	6,800.7	562.3	-1,480.9	1,584.1	0.00	0.00	
7,200.0	0.00	0.00	6,900.7	562.3	-1,480.9	1,584.1	0.00	0.00	
7,252.3	0.00	0.00	6,953.0	562.3	-1,480.9	1,584.1	0.00	0.00	ROLLINS.MBL (SSTVD)
7,300.0	0.00	0.00	7,000.7	562.3	-1,480.9	1,584.1	0.00	0.00	
7,400.0	0.00	0.00	7,100.7	562.3	-1,480.9	1,584.1	0.00	0.00	
7,402.3	0.00	0.00	7,103.0	562.3	-1,480.9	1,584.1	0.00	0.00	TD at 7402.3 - TD.MBL (SSTVD)

### Targets

Target Name	Dip Angle (°)	Dip Dir. (°)	TVD (usft)	+N/-S (usft)	+E/-W (usft)	Northing (usft)	Easting (usft)	Latitude	Longitude
- hit/miss target									
- Shape									
CHEVRON 21C-17 PBH	0.00	0.00	7,103.0	562.3	-1,480.9	14,367,718.00	2,448,540.00	39.529836	-108.134234
- plan hits target center									
- Circle (radius 50.0)									

## Planning Report

<b>Database:</b>	USA EDM 5000 Multi Users DB	<b>Local Co-ordinate Reference:</b>	Well CHEVRON 21C-17
<b>Company:</b>	Caerus Oil & Gas	<b>TVD Reference:</b>	30' KB @ 5613.0usft
<b>Project:</b>	Garfield County, CO (UTM 12N)	<b>MD Reference:</b>	30' KB @ 5613.0usft
<b>Site:</b>	S17-T6S-R96W (PC5A)	<b>North Reference:</b>	True
<b>Well:</b>	CHEVRON 21C-17	<b>Survey Calculation Method:</b>	Minimum Curvature
<b>Wellbore:</b>	OH		
<b>Design:</b>	PLAN #1		

Formations						
Measured Depth (usft)	Vertical Depth (usft)	Name	Lithology	Dip (°)	Dip Direction (°)	
4,099.9	3,842.0	OHIO_CREEK.MBL (SSTVD)		0.00		
4,428.3	4,145.0	WILLIAMS_FORK.MBL (SSTVD)		0.00		
5,234.3	4,935.0	TOP_GAS.MBL (SSTVD)		0.00		
6,782.3	6,483.0	CAMEO.MBL (SSTVD)		0.00		
7,252.3	6,953.0	ROLLINS.MBL (SSTVD)		0.00		
7,402.3	7,103.0	TD.MBL (SSTVD)		0.00		

Plan Annotations					
Measured Depth (usft)	Vertical Depth (usft)	Local Coordinates			
		+N/-S (usft)	+E/-W (usft)	Comment	
300.0	300.0	0.0	0.0	Start Build 3.00	
1,060.8	1,040.8	53.1	-139.8	Start 3312.7 hold at 1060.8 MD	
4,373.5	4,094.2	509.2	-1,341.1	Start Drop -3.00	
5,134.3	4,835.0	562.3	-1,480.9	Start 2268.0 hold at 5134.3 MD	
7,402.3	7,103.0	562.3	-1,480.9	TD at 7402.3	