



SECTION DETAILS

Sec	MD	Inc	Azi	TVD	+N/-S	+E/-W	Dleg	TFace	VSec	Target
1	0.0	0.00	0.00	0.0	0.0	0.0	0.00	0.00	0.0	
2	200.0	0.00	0.00	200.0	0.0	0.0	0.00	0.00	0.0	
3	1402.7	36.08	278.47	1324.8	53.9	-362.3	3.00	278.47	366.3	
4	4276.4	36.08	278.47	3647.2	303.2	-2036.3	0.00	0.00	2058.7	
5	5479.1	0.00	0.00	4772.0	357.1	-2398.6	3.00	180.00	2425.1	CHEVRON 11C-17 PBHL
6	7761.1	0.00	0.00	7054.0	357.1	-2398.6	0.00	0.00	2425.1	

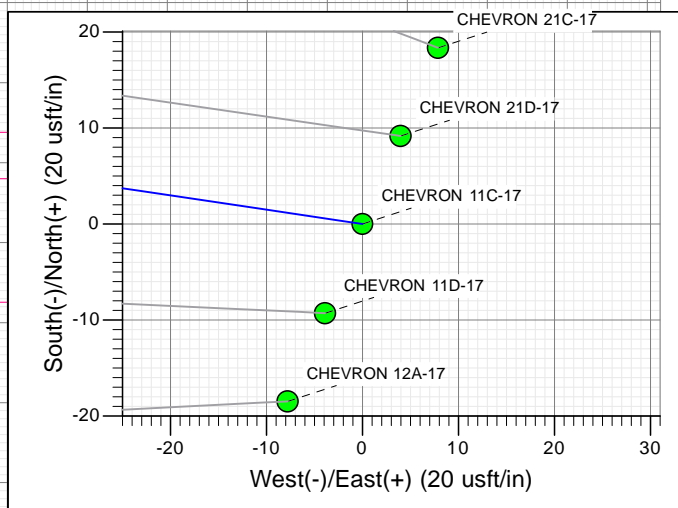
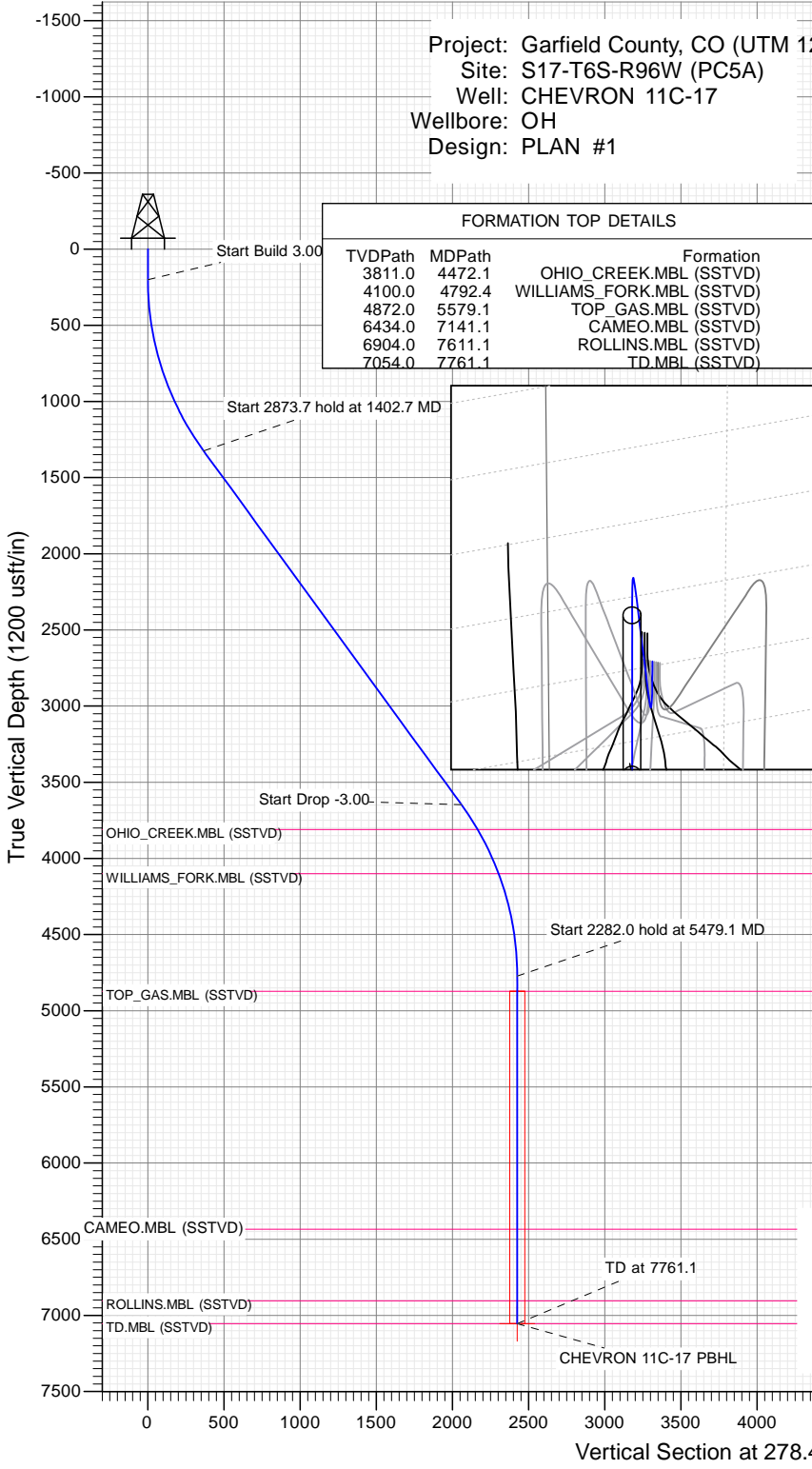
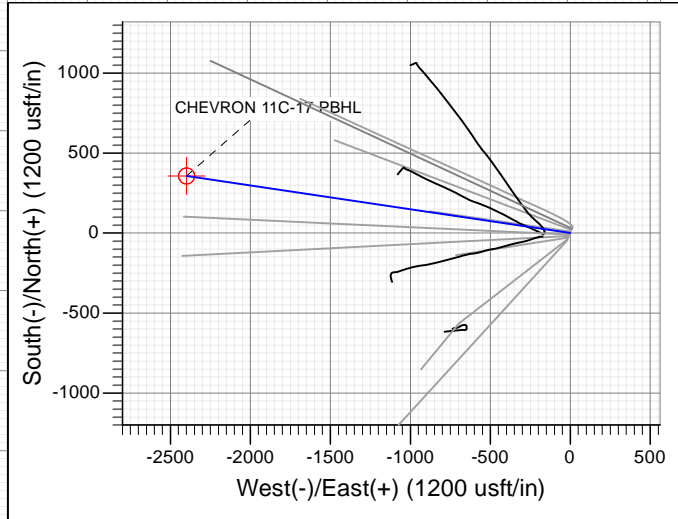
Project: Garfield County, CO (UTM 12
 Site: S17-T6S-R96W (PC5A)
 Well: CHEVRON 11C-17
 Wellbore: OH
 Design: PLAN #1

PLAN #1
 CHEVRON 11C-17
 15XXX; LR
 30 KB @ 5613.0usft
 Ground Level @ 5583.0
 NAD 1927 - Western US
 Well CHEVRON 11C-17, True North

Name	Type	TD	Target	No Target (Freehand)	Azimuth	Origin	Type	N/S	E/W	From	TVD	+N/-S	+E/-W	Latitude	Longitude
CHEVRON 11C-17 PBHL					278.47	Slot		0.0	0.0	0.0	7054.0	357.1	-2398.6	39.529222	-108.137514

FORMATION TOP DETAILS

TVDPath	MDPath	Formation
3811.0	4472.1	OHIO_CREEK.MBL (SSTVD)
4100.0	4792.4	WILLIAMS_FORK.MBL (SSTVD)
4872.0	5579.1	TOP_GAS.MBL (SSTVD)
6434.0	7141.1	CAMEO.MBL (SSTVD)
6904.0	7611.1	ROLLINS.MBL (SSTVD)
7054.0	7761.1	TD.MBL (SSTVD)



M
 Azimuths to True North
 Magnetic North: 9.82°

Magnetic Field
 Strength: 51888.8snT
 Dip Angle: 65.93°
 Date: 11/10/2015
 Model: HDGM

CASING DETAILS
 No casing data is available

WELL DETAILS: CHEVRON 11C-17

+N/-S	+E/-W	Northing	Easting	Latitude	Longitude
0.0	0.0	14367184.60	2450030.80	39.528243	-108.129014

Ground Level: 5583.0



Planning Report

Database:	USA EDM 5000 Multi Users DB	Local Co-ordinate Reference:	Well CHEVRON 11C-17
Company:	Caerus Oil & Gas	TVD Reference:	30' KB @ 5613.0usft
Project:	Garfield County, CO (UTM 12N)	MD Reference:	30' KB @ 5613.0usft
Site:	S17-T6S-R96W (PC5A)	North Reference:	True
Well:	CHEVRON 11C-17	Survey Calculation Method:	Minimum Curvature
Wellbore:	OH		
Design:	PLAN #1		

Project	Garfield County, CO (UTM 12N)		
Map System:	Universal Transverse Mercator (US Survey Feet)	System Datum:	Mean Sea Level
Geo Datum:	NAD 1927 - Western US		
Map Zone:	Zone 12N (114 W to 108 W)		

Site	S17-T6S-R96W (PC5A)				
Site Position:		Northing:	14,367,212.50 usft	Latitude:	39.528318
From:	Map	Easting:	2,450,041.70 usft	Longitude:	-108.128972
Position Uncertainty:	0.0 usft	Slot Radius:	13-3/16"	Grid Convergence:	1.83 °

Well	CHEVRON 11C-17					
Well Position	+N/-S	0.0 usft	Northing:	14,367,184.60 usft	Latitude:	39.528243
	+E/-W	0.0 usft	Easting:	2,450,030.80 usft	Longitude:	-108.129014
Position Uncertainty		0.0 usft	Wellhead Elevation:	0.0 usft	Ground Level:	5,583.0 usft

Wellbore	OH				
Magnetics	Model Name	Sample Date	Declination	Dip Angle	Field Strength
			(°)	(°)	(nT)
	HDGM	11/10/2015	9.82	65.93	51,889

Design	PLAN #1			
Audit Notes:				
Version:	Phase:	PLAN	Tie On Depth:	0.0
Vertical Section:	Depth From (TVD)	+N/-S	+E/-W	Direction
	(usft)	(usft)	(usft)	(°)
	0.0	0.0	0.0	278.47

Plan Sections										
Measured Depth (usft)	Inclination (°)	Azimuth (°)	Vertical Depth (usft)	+N/-S (usft)	+E/-W (usft)	Dogleg Rate (°/100usft)	Build Rate (°/100usft)	Turn Rate (°/100usft)	TFO (°)	Target
0.0	0.00	0.00	0.0	0.0	0.0	0.00	0.00	0.00	0.00	
200.0	0.00	0.00	200.0	0.0	0.0	0.00	0.00	0.00	0.00	
1,402.7	36.08	278.47	1,324.8	53.9	-362.3	3.00	3.00	0.00	278.47	
4,276.4	36.08	278.47	3,647.2	303.2	-2,036.3	0.00	0.00	0.00	0.00	
5,479.1	0.00	0.00	4,772.0	357.1	-2,398.6	3.00	-3.00	0.00	180.00	
7,761.1	0.00	0.00	7,054.0	357.1	-2,398.6	0.00	0.00	0.00	0.00	CHEVRON 11C-17 PI

Planning Report

Database:	USA EDM 5000 Multi Users DB	Local Co-ordinate Reference:	Well CHEVRON 11C-17
Company:	Caerus Oil & Gas	TVD Reference:	30' KB @ 5613.0usft
Project:	Garfield County, CO (UTM 12N)	MD Reference:	30' KB @ 5613.0usft
Site:	S17-T6S-R96W (PC5A)	North Reference:	True
Well:	CHEVRON 11C-17	Survey Calculation Method:	Minimum Curvature
Wellbore:	OH		
Design:	PLAN #1		

Planned Survey									
Measured Depth (usft)	Inclination (°)	Azimuth (°)	Vertical Depth (usft)	+N/-S (usft)	+E/-W (usft)	Vertical Section (usft)	Dogleg Rate (°/100usft)	Build Rate (°/100u)	Comments / Formations
0.0	0.00	0.00	0.0	0.0	0.0	0.0	0.00	0.00	
100.0	0.00	0.00	100.0	0.0	0.0	0.0	0.00	0.00	
200.0	0.00	0.00	200.0	0.0	0.0	0.0	0.00	0.00	Start Build 3.00
300.0	3.00	278.47	300.0	0.4	-2.6	2.6	3.00	3.00	
400.0	6.00	278.47	399.6	1.5	-10.3	10.5	3.00	3.00	
500.0	9.00	278.47	498.8	3.5	-23.3	23.5	3.00	3.00	
600.0	12.00	278.47	597.1	6.1	-41.3	41.7	3.00	3.00	
700.0	15.00	278.47	694.3	9.6	-64.4	65.1	3.00	3.00	
800.0	18.00	278.47	790.2	13.8	-92.5	93.5	3.00	3.00	
900.0	21.00	278.47	884.4	18.7	-125.5	126.9	3.00	3.00	
1,000.0	24.00	278.47	976.8	24.3	-163.3	165.1	3.00	3.00	
1,100.0	27.00	278.47	1,067.1	30.7	-205.9	208.2	3.00	3.00	
1,200.0	30.00	278.47	1,154.9	37.7	-253.1	255.9	3.00	3.00	
1,300.0	33.00	278.47	1,240.2	45.4	-304.8	308.1	3.00	3.00	
1,400.0	36.00	278.47	1,322.6	53.7	-360.8	364.8	3.00	3.00	
1,402.7	36.08	278.47	1,324.8	53.9	-362.3	366.3	3.00	3.00	Start 2873.7 hold at 1402.7 MD
1,500.0	36.08	278.47	1,403.4	62.4	-419.0	423.6	0.00	0.00	
1,600.0	36.08	278.47	1,484.2	71.1	-477.3	482.5	0.00	0.00	
1,700.0	36.08	278.47	1,565.0	79.7	-535.5	541.4	0.00	0.00	
1,800.0	36.08	278.47	1,645.9	88.4	-593.8	600.3	0.00	0.00	
1,900.0	36.08	278.47	1,726.7	97.1	-652.0	659.2	0.00	0.00	
2,000.0	36.08	278.47	1,807.5	105.7	-710.3	718.1	0.00	0.00	
2,100.0	36.08	278.47	1,888.3	114.4	-768.5	777.0	0.00	0.00	
2,200.0	36.08	278.47	1,969.1	123.1	-826.8	835.9	0.00	0.00	
2,300.0	36.08	278.47	2,050.0	131.8	-885.0	894.8	0.00	0.00	
2,400.0	36.08	278.47	2,130.8	140.4	-943.3	953.7	0.00	0.00	
2,500.0	36.08	278.47	2,211.6	149.1	-1,001.5	1,012.6	0.00	0.00	
2,600.0	36.08	278.47	2,292.4	157.8	-1,059.8	1,071.5	0.00	0.00	
2,700.0	36.08	278.47	2,373.2	166.5	-1,118.0	1,130.4	0.00	0.00	
2,800.0	36.08	278.47	2,454.0	175.1	-1,176.3	1,189.2	0.00	0.00	
2,900.0	36.08	278.47	2,534.9	183.8	-1,234.5	1,248.1	0.00	0.00	
3,000.0	36.08	278.47	2,615.7	192.5	-1,292.8	1,307.0	0.00	0.00	
3,100.0	36.08	278.47	2,696.5	201.1	-1,351.0	1,365.9	0.00	0.00	
3,200.0	36.08	278.47	2,777.3	209.8	-1,409.3	1,424.8	0.00	0.00	
3,300.0	36.08	278.47	2,858.1	218.5	-1,467.5	1,483.7	0.00	0.00	
3,400.0	36.08	278.47	2,939.0	227.2	-1,525.8	1,542.6	0.00	0.00	
3,500.0	36.08	278.47	3,019.8	235.8	-1,584.0	1,601.5	0.00	0.00	
3,600.0	36.08	278.47	3,100.6	244.5	-1,642.3	1,660.4	0.00	0.00	
3,700.0	36.08	278.47	3,181.4	253.2	-1,700.5	1,719.3	0.00	0.00	
3,800.0	36.08	278.47	3,262.2	261.8	-1,758.8	1,778.2	0.00	0.00	
3,900.0	36.08	278.47	3,343.1	270.5	-1,817.0	1,837.1	0.00	0.00	
4,000.0	36.08	278.47	3,423.9	279.2	-1,875.3	1,896.0	0.00	0.00	
4,100.0	36.08	278.47	3,504.7	287.9	-1,933.5	1,954.9	0.00	0.00	
4,200.0	36.08	278.47	3,585.5	296.5	-1,991.8	2,013.7	0.00	0.00	
4,276.4	36.08	278.47	3,647.2	303.2	-2,036.3	2,058.7	0.00	0.00	Start Drop -3.00
4,300.0	35.37	278.47	3,666.4	305.2	-2,049.9	2,072.5	3.00	-3.00	
4,400.0	32.37	278.47	3,749.4	313.4	-2,105.0	2,128.3	3.00	-3.00	
4,472.1	30.21	278.47	3,811.0	318.9	-2,142.1	2,165.7	3.00	-3.00	OHIO_CREEK.MBL (SSTVD)
4,500.0	29.37	278.47	3,835.3	321.0	-2,155.8	2,179.6	3.00	-3.00	
4,600.0	26.37	278.47	3,923.6	327.8	-2,202.0	2,226.3	3.00	-3.00	
4,700.0	23.37	278.47	4,014.4	334.0	-2,243.6	2,268.4	3.00	-3.00	
4,792.4	20.60	278.47	4,100.0	339.1	-2,277.8	2,302.9	3.00	-3.00	WILLIAMS_FORK.MBL (SSTVD)

Planning Report

Database:	USA EDM 5000 Multi Users DB	Local Co-ordinate Reference:	Well CHEVRON 11C-17
Company:	Caerus Oil & Gas	TVD Reference:	30' KB @ 5613.0usft
Project:	Garfield County, CO (UTM 12N)	MD Reference:	30' KB @ 5613.0usft
Site:	S17-T6S-R96W (PC5A)	North Reference:	True
Well:	CHEVRON 11C-17	Survey Calculation Method:	Minimum Curvature
Wellbore:	OH		
Design:	PLAN #1		

Planned Survey									
Measured Depth (usft)	Inclination (°)	Azimuth (°)	Vertical Depth (usft)	+N/-S (usft)	+E/-W (usft)	Vertical Section (usft)	Dogleg Rate (°/100usft)	Build Rate (°/100u)	Comments / Formations
4,800.0	20.37	278.47	4,107.1	339.5	-2,280.5	2,305.6	3.00	-3.00	
4,900.0	17.37	278.47	4,201.8	344.3	-2,312.5	2,337.9	3.00	-3.00	
5,000.0	14.37	278.47	4,297.9	348.3	-2,339.5	2,365.3	3.00	-3.00	
5,100.0	11.37	278.47	4,395.4	351.6	-2,361.5	2,387.6	3.00	-3.00	
5,200.0	8.37	278.47	4,493.9	354.1	-2,378.5	2,404.7	3.00	-3.00	
5,300.0	5.37	278.47	4,593.2	355.9	-2,390.3	2,416.7	3.00	-3.00	
5,400.0	2.37	278.47	4,693.0	356.9	-2,397.0	2,423.4	3.00	-3.00	
5,479.1	0.00	0.00	4,772.0	357.1	-2,398.6	2,425.1	3.00	-3.00	Start 2282.0 hold at 5479.1 MD
5,500.0	0.00	0.00	4,792.9	357.1	-2,398.6	2,425.1	0.00	0.00	
5,579.1	0.00	0.00	4,872.0	357.1	-2,398.6	2,425.1	0.00	0.00	TOP_GAS.MBL (SSTVD)
5,600.0	0.00	0.00	4,892.9	357.1	-2,398.6	2,425.1	0.00	0.00	
5,700.0	0.00	0.00	4,992.9	357.1	-2,398.6	2,425.1	0.00	0.00	
5,800.0	0.00	0.00	5,092.9	357.1	-2,398.6	2,425.1	0.00	0.00	
5,900.0	0.00	0.00	5,192.9	357.1	-2,398.6	2,425.1	0.00	0.00	
6,000.0	0.00	0.00	5,292.9	357.1	-2,398.6	2,425.1	0.00	0.00	
6,100.0	0.00	0.00	5,392.9	357.1	-2,398.6	2,425.1	0.00	0.00	
6,200.0	0.00	0.00	5,492.9	357.1	-2,398.6	2,425.1	0.00	0.00	
6,300.0	0.00	0.00	5,592.9	357.1	-2,398.6	2,425.1	0.00	0.00	
6,400.0	0.00	0.00	5,692.9	357.1	-2,398.6	2,425.1	0.00	0.00	
6,500.0	0.00	0.00	5,792.9	357.1	-2,398.6	2,425.1	0.00	0.00	
6,600.0	0.00	0.00	5,892.9	357.1	-2,398.6	2,425.1	0.00	0.00	
6,700.0	0.00	0.00	5,992.9	357.1	-2,398.6	2,425.1	0.00	0.00	
6,800.0	0.00	0.00	6,092.9	357.1	-2,398.6	2,425.1	0.00	0.00	
6,900.0	0.00	0.00	6,192.9	357.1	-2,398.6	2,425.1	0.00	0.00	
7,000.0	0.00	0.00	6,292.9	357.1	-2,398.6	2,425.1	0.00	0.00	
7,100.0	0.00	0.00	6,392.9	357.1	-2,398.6	2,425.1	0.00	0.00	
7,141.1	0.00	0.00	6,434.0	357.1	-2,398.6	2,425.1	0.00	0.00	CAMEO.MBL (SSTVD)
7,200.0	0.00	0.00	6,492.9	357.1	-2,398.6	2,425.1	0.00	0.00	
7,300.0	0.00	0.00	6,592.9	357.1	-2,398.6	2,425.1	0.00	0.00	
7,400.0	0.00	0.00	6,692.9	357.1	-2,398.6	2,425.1	0.00	0.00	
7,500.0	0.00	0.00	6,792.9	357.1	-2,398.6	2,425.1	0.00	0.00	
7,600.0	0.00	0.00	6,892.9	357.1	-2,398.6	2,425.1	0.00	0.00	
7,611.1	0.00	0.00	6,904.0	357.1	-2,398.6	2,425.1	0.00	0.00	ROLLINS.MBL (SSTVD)
7,700.0	0.00	0.00	6,992.9	357.1	-2,398.6	2,425.1	0.00	0.00	
7,761.1	0.00	0.00	7,054.0	357.1	-2,398.6	2,425.1	0.00	0.00	TD at 7761.1 - TD.MBL (SSTVD)

Targets									
Target Name	Dip Angle (°)	Dip Dir. (°)	TVD (usft)	+N/-S (usft)	+E/-W (usft)	Northing (usft)	Easting (usft)	Latitude	Longitude
CHEVRON 11C-17 PBH - hit/miss target - Shape - Circle (radius 50.0)	0.00	0.00	7,054.0	357.1	-2,398.6	14,367,465.00	2,447,622.00	39.529222	-108.137514

Planning Report

Database:	USA EDM 5000 Multi Users DB	Local Co-ordinate Reference:	Well CHEVRON 11C-17
Company:	Caerus Oil & Gas	TVD Reference:	30' KB @ 5613.0usft
Project:	Garfield County, CO (UTM 12N)	MD Reference:	30' KB @ 5613.0usft
Site:	S17-T6S-R96W (PC5A)	North Reference:	True
Well:	CHEVRON 11C-17	Survey Calculation Method:	Minimum Curvature
Wellbore:	OH		
Design:	PLAN #1		

Formations					
Measured Depth (usft)	Vertical Depth (usft)	Name	Lithology	Dip (°)	Dip Direction (°)
4,472.1	3,811.0	OHIO_CREEK.MBL (SSTVD)		0.00	
4,792.4	4,100.0	WILLIAMS_FORK.MBL (SSTVD)		0.00	
5,579.1	4,872.0	TOP_GAS.MBL (SSTVD)		0.00	
7,141.1	6,434.0	CAMEO.MBL (SSTVD)		0.00	
7,611.1	6,904.0	ROLLINS.MBL (SSTVD)		0.00	
7,761.1	7,054.0	TD.MBL (SSTVD)		0.00	

Plan Annotations					
Measured Depth (usft)	Vertical Depth (usft)	Local Coordinates		Comment	
		+N/-S (usft)	+E/-W (usft)		
200.0	200.0	0.0	0.0	Start Build 3.00	
1,402.7	1,324.8	53.9	-362.3	Start 2873.7 hold at 1402.7 MD	
4,276.4	3,647.2	303.2	-2,036.3	Start Drop -3.00	
5,479.1	4,772.0	357.1	-2,398.6	Start 2282.0 hold at 5479.1 MD	
7,761.1	7,054.0	357.1	-2,398.6	TD at 7761.1	