

# T6S, R96W, 6th P.M.

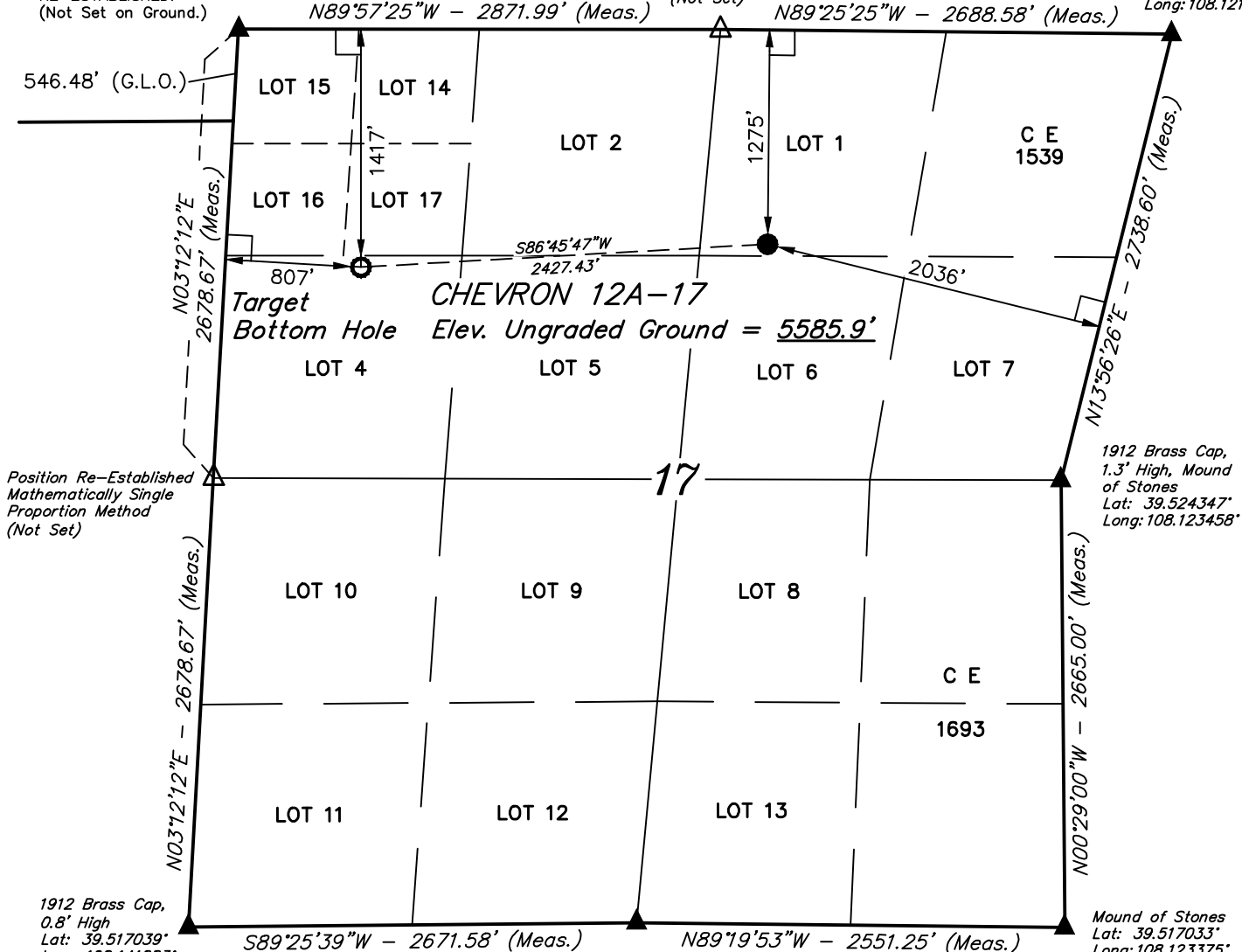
## LEGEND:

- └─ = 90° SYMBOL
- = PROPOSED WELLHEAD.
- = TARGET BOTTOM HOLE.
- ▲ = SECTION CORNERS LOCATED.
- △ = SECTION CORNERS RE-ESTABLISHED. (Not Set on Ground.)

Brass Cap, 1.5' High  
Lat: 39.531719°  
Long: 108.140828°

Position Re-Established  
Mathematically Grant  
Boundary Method  
(Not Set)

2000 Alum. Cap,  
#18268, 0.8' High,  
Mound of Stones  
Lat: 39.531642°  
Long: 108.121122°



NAD 83 (TARGET BOTTOM HOLE)	NAD 83 (SURFACE LOCATION)
LATITUDE = 39°31'40.19" (39.527831)	LATITUDE = 39°31'41.55" (39.528208)
LONGITUDE = 108°08'17.68" (108.138244)	LONGITUDE = 108°07'46.76" (108.129656)
NAD 27 (TARGET BOTTOM HOLE)	NAD 27 (SURFACE LOCATION)
LATITUDE = 39°31'40.27" (39.527853)	LATITUDE = 39°31'41.63" (39.528231)
LONGITUDE = 108°08'15.39" (108.137608)	LONGITUDE = 108°07'44.47" (108.129019)
UTM NAD 27 (ZONE 12)	UTM NAD 27 (ZONE 12)
N: 14366965.00 E: 2447611.00	N: 14367179.89 E: 2450029.03

2000 Alum. Cap,  
#18268, 0.6' High  
Mound of Stones  
Lat: 39.517114°  
Long: 108.132417°

**CERTIFICATE**

THIS IS TO CERTIFY THAT THE ABOVE PLAT WAS PREPARED FROM FIELD NOTES OF ACTUAL SURVEYS MADE BY ME OR UNDER MY SUPERVISION AND THAT THE SAME ARE TRUE AND CORRECT TO THE BEST OF MY KNOWLEDGE AND BELIEF.

REGISTERED LAND SURVEYOR  
 REGISTRATION NO. 38130  
 STATE OF COLORADO

**BASIS OF BEARINGS**  
BASIS OF BEARINGS IS A G.P.S. OBSERVATION

**BASIS OF ELEVATION**

SPOT ELEVATION AT THE NORTHWEST CORNER OF SECTION 30, T5S, R95W, 6th P.M., TAKEN FROM THE FORKED GULCH, QUADRANGLE, COLORADO, GARFIELD COUNTY, 7.5 MINUTE QUAD. (TOPOGRAPHIC MAP) PUBLISHED BY THE UNITED STATES DEPARTMENT OF THE INTERIOR, GEOLOGICAL SURVEY. SAID ELEVATION IS MARKED AS BEING 5966 FEET.

**Caerus Oil & Gas LLC**

**CHEVRON 12A-17**  
**LOT 1, SECTION 17, T6S, R96W, 6th P.M.**  
**GARFIELD COUNTY, COLORADO**



**UELS, LLC**  
Corporate Office \* 85 South 200 East  
Vernal, UT 84078 \* (435) 789-1017



SURVEYED BY: BRIAN BAKER, B.B.	DATE: 04-30-15
DRAWN BY: M.D.	DATE DRAWN: 10-06-15
SCALE: 1" = 1000'	REVISED: 12-11-15 M.O.E.

## WELL LOCATION PLAT