



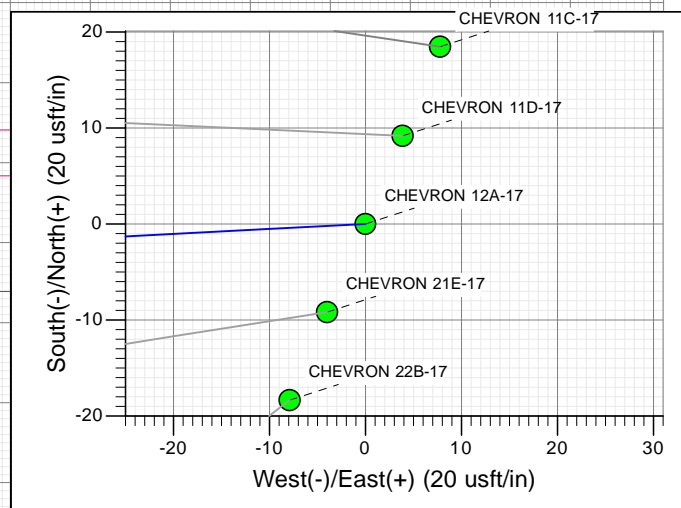
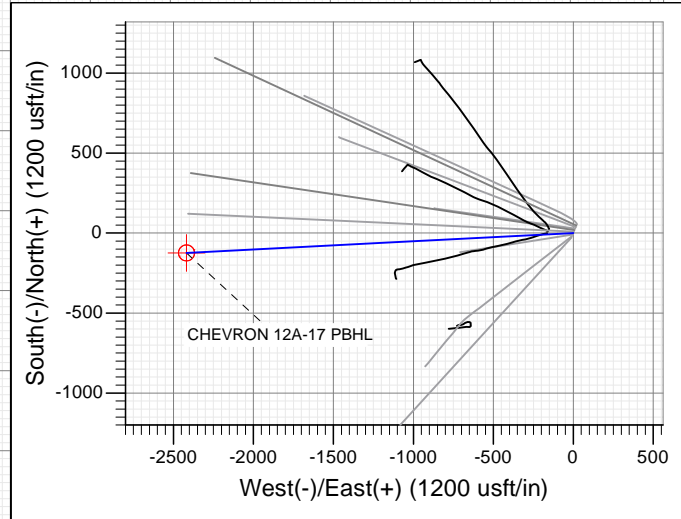
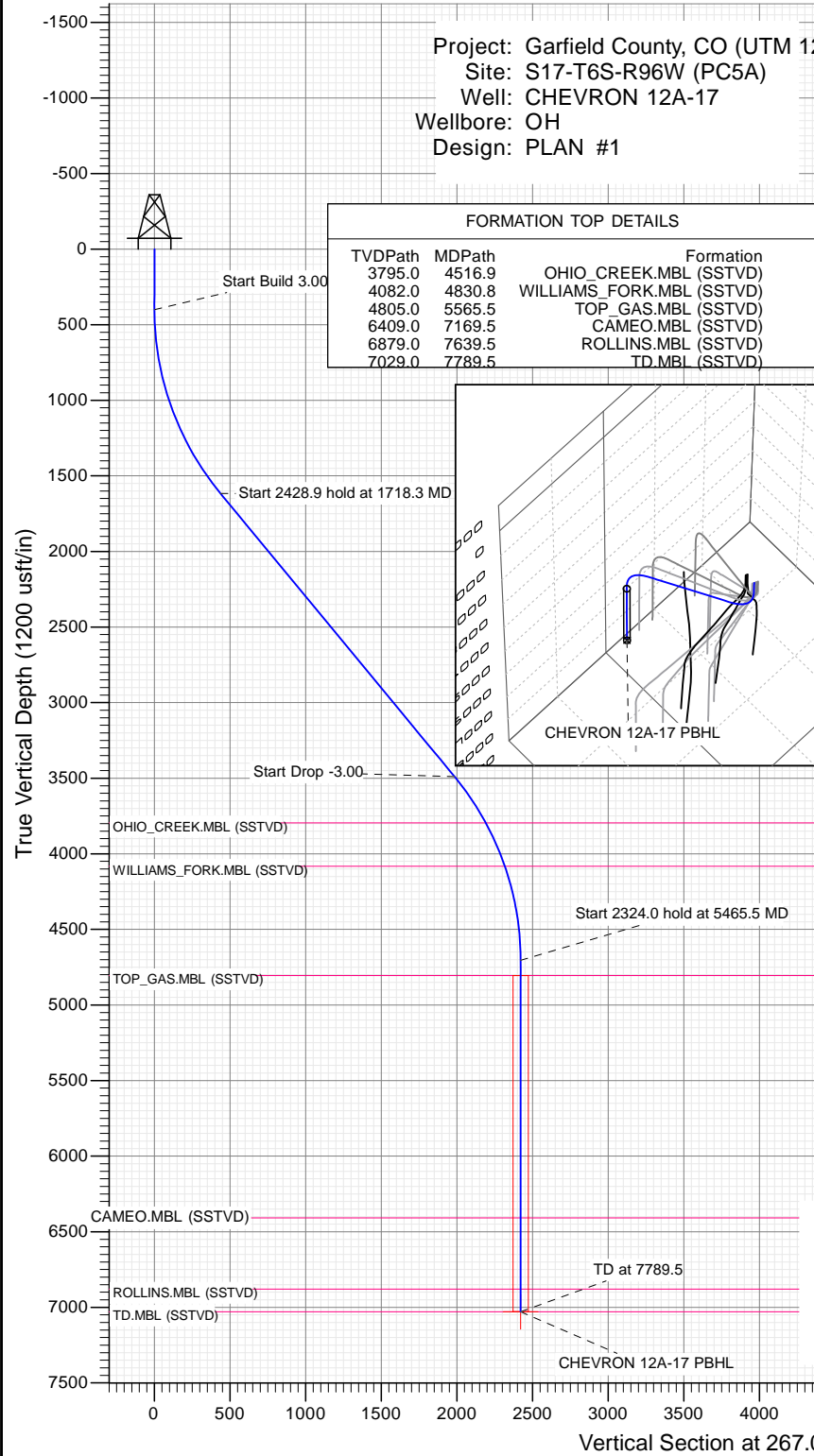
SECTION DETAILS

Sec	MD	Inc	Azi	TVD	+N/-S	+E/-W	Dleg	TFace	VSec	Target
1	0.0	0.00	0.00	0.0	0.0	0.0	0.00	0.00	0.0	
2	400.0	0.00	0.00	400.0	0.0	0.0	0.00	0.00	0.0	
3	1718.3	39.55	267.07	1616.1	-22.4	-436.6	3.00	267.07	437.2	
4	4147.2	39.55	267.07	3488.9	-101.5	-1981.1	0.00	0.00	1983.7	
5	5465.5	0.00	0.00	4705.0	-123.8	-2417.8	3.00	180.00	2421.0	
6	7789.5	0.00	0.00	7029.0	-123.8	-2417.8	0.00	0.00	2421.0	CHEVRON 12A-17 PBHL

Project: Garfield County, CO (UTM 12  
 Site: S17-T6S-R96W (PC5A)  
 Well: CHEVRON 12A-17  
 Wellbore: OH  
 Design: PLAN #1

PLAN #1  
 CHEVRON 12A-17  
 15XXX LR  
 30 KB @ 5613.0usft  
 Ground Level @ 5583.0  
 NAD 1927 - Western US  
 Well CHEVRON 12A-17, True North

Type	Target	Azimuth	Origin	N/S	E/W	From
TD	No Target (Freehand)	267.07	Type Slot	0.0	0.0	TVD 0.0
Name		TVD	+N/-S	+E/-W	Latitude	Longitude
CHEVRON 12A-17 PBHL		7029.0	-123.8	-2417.8	39.527852	-108.137609



↑ T  
 ↘ M

Azimuths to True North  
 Magnetic North: 9.82°

Magnetic Field  
 Strength: 51888.8snT  
 Dip Angle: 65.93°  
 Date: 11/10/2015  
 Model: HDGM

CASING DETAILS

No casing data is available



WELL DETAILS: CHEVRON 12A-17

Ground Level: 5583.0		Northing		Easting		Latitude		Longitude	
+N/-S	+E/-W	0.0	0.0	14367165.90	2450023.60	39.528192	-108.129041		



## Planning Report

<b>Database:</b>	USA EDM 5000 Multi Users DB	<b>Local Co-ordinate Reference:</b>	Well CHEVRON 12A-17
<b>Company:</b>	Caerus Oil & Gas	<b>TVD Reference:</b>	30' KB @ 5613.0usft
<b>Project:</b>	Garfield County, CO (UTM 12N)	<b>MD Reference:</b>	30' KB @ 5613.0usft
<b>Site:</b>	S17-T6S-R96W (PC5A)	<b>North Reference:</b>	True
<b>Well:</b>	CHEVRON 12A-17	<b>Survey Calculation Method:</b>	Minimum Curvature
<b>Wellbore:</b>	OH		
<b>Design:</b>	PLAN #1		

<b>Project</b>	Garfield County, CO (UTM 12N)		
<b>Map System:</b>	Universal Transverse Mercator (US Survey Feet)	<b>System Datum:</b>	Mean Sea Level
<b>Geo Datum:</b>	NAD 1927 - Western US		
<b>Map Zone:</b>	Zone 12N (114 W to 108 W)		

<b>Site</b>	S17-T6S-R96W (PC5A)				
<b>Site Position:</b>		<b>Northing:</b>	14,367,212.50 usft	<b>Latitude:</b>	39.528318
<b>From:</b>	Map	<b>Easting:</b>	2,450,041.70 usft	<b>Longitude:</b>	-108.128972
<b>Position Uncertainty:</b>	0.0 usft	<b>Slot Radius:</b>	13-3/16"	<b>Grid Convergence:</b>	1.83 °

<b>Well</b>	CHEVRON 12A-17					
<b>Well Position</b>	<b>+N/-S</b>	0.0 usft	<b>Northing:</b>	14,367,165.90 usft	<b>Latitude:</b>	39.528192
	<b>+E/-W</b>	0.0 usft	<b>Easting:</b>	2,450,023.60 usft	<b>Longitude:</b>	-108.129041
<b>Position Uncertainty</b>		0.0 usft	<b>Wellhead Elevation:</b>	0.0 usft	<b>Ground Level:</b>	5,583.0 usft

<b>Wellbore</b>	OH				
<b>Magnetics</b>	<b>Model Name</b>	<b>Sample Date</b>	<b>Declination</b>	<b>Dip Angle</b>	<b>Field Strength</b>
			(°)	(°)	(nT)
	HDGM	11/10/2015	9.82	65.93	51,889

<b>Design</b>	PLAN #1			
<b>Audit Notes:</b>				
<b>Version:</b>	<b>Phase:</b>	PLAN	<b>Tie On Depth:</b>	0.0
<b>Vertical Section:</b>	<b>Depth From (TVD)</b>	<b>+N/-S</b>	<b>+E/-W</b>	<b>Direction</b>
	(usft)	(usft)	(usft)	(°)
	0.0	0.0	0.0	267.07

Plan Sections										
Measured Depth (usft)	Inclination (°)	Azimuth (°)	Vertical Depth (usft)	+N/-S (usft)	+E/-W (usft)	Dogleg Rate (°/100usft)	Build Rate (°/100usft)	Turn Rate (°/100usft)	TFO (°)	Target
0.0	0.00	0.00	0.0	0.0	0.0	0.00	0.00	0.00	0.00	
400.0	0.00	0.00	400.0	0.0	0.0	0.00	0.00	0.00	0.00	
1,718.3	39.55	267.07	1,616.1	-22.4	-436.6	3.00	3.00	0.00	267.07	
4,147.2	39.55	267.07	3,488.9	-101.5	-1,981.1	0.00	0.00	0.00	0.00	
5,465.5	0.00	0.00	4,705.0	-123.8	-2,417.8	3.00	-3.00	0.00	180.00	
7,789.5	0.00	0.00	7,029.0	-123.8	-2,417.8	0.00	0.00	0.00	0.00	CHEVRON 12A-17 PI

## Planning Report

<b>Database:</b>	USA EDM 5000 Multi Users DB	<b>Local Co-ordinate Reference:</b>	Well CHEVRON 12A-17
<b>Company:</b>	Caerus Oil & Gas	<b>TVD Reference:</b>	30' KB @ 5613.0usft
<b>Project:</b>	Garfield County, CO (UTM 12N)	<b>MD Reference:</b>	30' KB @ 5613.0usft
<b>Site:</b>	S17-T6S-R96W (PC5A)	<b>North Reference:</b>	True
<b>Well:</b>	CHEVRON 12A-17	<b>Survey Calculation Method:</b>	Minimum Curvature
<b>Wellbore:</b>	OH		
<b>Design:</b>	PLAN #1		

Planned Survey									
Measured Depth (usft)	Inclination (°)	Azimuth (°)	Vertical Depth (usft)	+N/-S (usft)	+E/-W (usft)	Vertical Section (usft)	Dogleg Rate (°/100usft)	Build Rate (°/100u)	Comments / Formations
0.0	0.00	0.00	0.0	0.0	0.0	0.0	0.00	0.00	
100.0	0.00	0.00	100.0	0.0	0.0	0.0	0.00	0.00	
200.0	0.00	0.00	200.0	0.0	0.0	0.0	0.00	0.00	
300.0	0.00	0.00	300.0	0.0	0.0	0.0	0.00	0.00	
400.0	0.00	0.00	400.0	0.0	0.0	0.0	0.00	0.00	Start Build 3.00
500.0	3.00	267.07	500.0	-0.1	-2.6	2.6	3.00	3.00	
600.0	6.00	267.07	599.6	-0.5	-10.4	10.5	3.00	3.00	
700.0	9.00	267.07	698.8	-1.2	-23.5	23.5	3.00	3.00	
800.0	12.00	267.07	797.1	-2.1	-41.7	41.7	3.00	3.00	
900.0	15.00	267.07	894.3	-3.3	-65.0	65.1	3.00	3.00	
1,000.0	18.00	267.07	990.2	-4.8	-93.4	93.5	3.00	3.00	
1,100.0	21.00	267.07	1,084.4	-6.5	-126.7	126.9	3.00	3.00	
1,200.0	24.00	267.07	1,176.8	-8.4	-164.9	165.1	3.00	3.00	
1,300.0	27.00	267.07	1,267.1	-10.6	-207.9	208.2	3.00	3.00	
1,400.0	30.00	267.07	1,354.9	-13.1	-255.5	255.9	3.00	3.00	
1,500.0	33.00	267.07	1,440.2	-15.8	-307.7	308.1	3.00	3.00	
1,600.0	36.00	267.07	1,522.6	-18.7	-364.3	364.8	3.00	3.00	
1,700.0	39.00	267.07	1,601.9	-21.8	-425.1	425.6	3.00	3.00	
1,718.3	39.55	267.07	1,616.1	-22.4	-436.6	437.2	3.00	3.00	Start 2428.9 hold at 1718.3 MD
1,800.0	39.55	267.07	1,679.1	-25.0	-488.6	489.2	0.00	0.00	
1,900.0	39.55	267.07	1,756.2	-28.3	-552.2	552.9	0.00	0.00	
2,000.0	39.55	267.07	1,833.3	-31.5	-615.8	616.6	0.00	0.00	
2,100.0	39.55	267.07	1,910.4	-34.8	-679.4	680.2	0.00	0.00	
2,200.0	39.55	267.07	1,987.5	-38.0	-742.9	743.9	0.00	0.00	
2,300.0	39.55	267.07	2,064.6	-41.3	-806.5	807.6	0.00	0.00	
2,400.0	39.55	267.07	2,141.7	-44.6	-870.1	871.3	0.00	0.00	
2,500.0	39.55	267.07	2,218.8	-47.8	-933.7	934.9	0.00	0.00	
2,600.0	39.55	267.07	2,295.9	-51.1	-997.3	998.6	0.00	0.00	
2,700.0	39.55	267.07	2,373.0	-54.3	-1,060.9	1,062.3	0.00	0.00	
2,800.0	39.55	267.07	2,450.2	-57.6	-1,124.5	1,126.0	0.00	0.00	
2,900.0	39.55	267.07	2,527.3	-60.8	-1,188.1	1,189.6	0.00	0.00	
3,000.0	39.55	267.07	2,604.4	-64.1	-1,251.7	1,253.3	0.00	0.00	
3,100.0	39.55	267.07	2,681.5	-67.4	-1,315.3	1,317.0	0.00	0.00	
3,200.0	39.55	267.07	2,758.6	-70.6	-1,378.9	1,380.7	0.00	0.00	
3,300.0	39.55	267.07	2,835.7	-73.9	-1,442.4	1,444.3	0.00	0.00	
3,400.0	39.55	267.07	2,912.8	-77.1	-1,506.0	1,508.0	0.00	0.00	
3,500.0	39.55	267.07	2,989.9	-80.4	-1,569.6	1,571.7	0.00	0.00	
3,600.0	39.55	267.07	3,067.0	-83.6	-1,633.2	1,635.4	0.00	0.00	
3,700.0	39.55	267.07	3,144.1	-86.9	-1,696.8	1,699.0	0.00	0.00	
3,800.0	39.55	267.07	3,221.2	-90.2	-1,760.4	1,762.7	0.00	0.00	
3,900.0	39.55	267.07	3,298.3	-93.4	-1,824.0	1,826.4	0.00	0.00	
4,000.0	39.55	267.07	3,375.5	-96.7	-1,887.6	1,890.0	0.00	0.00	
4,100.0	39.55	267.07	3,452.6	-99.9	-1,951.2	1,953.7	0.00	0.00	
4,147.2	39.55	267.07	3,488.9	-101.5	-1,981.1	1,983.7	0.00	0.00	Start Drop -3.00
4,200.0	37.96	267.07	3,530.1	-103.2	-2,014.2	2,016.8	3.00	-3.00	
4,300.0	34.96	267.07	3,610.5	-106.2	-2,073.5	2,076.3	3.00	-3.00	
4,400.0	31.96	267.07	3,694.0	-109.0	-2,128.6	2,131.4	3.00	-3.00	
4,500.0	28.96	267.07	3,780.1	-111.6	-2,179.2	2,182.1	3.00	-3.00	
4,516.9	28.46	267.07	3,795.0	-112.0	-2,187.3	2,190.2	3.00	-3.00	OHIO_CREEK.MBL (SSTVD)
4,600.0	25.96	267.07	3,868.9	-114.0	-2,225.3	2,228.2	3.00	-3.00	
4,700.0	22.96	267.07	3,959.9	-116.1	-2,266.6	2,269.6	3.00	-3.00	
4,800.0	19.96	267.07	4,052.9	-118.0	-2,303.2	2,306.2	3.00	-3.00	

## Planning Report

<b>Database:</b> USA EDM 5000 Multi Users DB	<b>Local Co-ordinate Reference:</b> Well CHEVRON 12A-17
<b>Company:</b> Caerus Oil & Gas	<b>TVD Reference:</b> 30' KB @ 5613.0usft
<b>Project:</b> Garfield County, CO (UTM 12N)	<b>MD Reference:</b> 30' KB @ 5613.0usft
<b>Site:</b> S17-T6S-R96W (PC5A)	<b>North Reference:</b> True
<b>Well:</b> CHEVRON 12A-17	<b>Survey Calculation Method:</b> Minimum Curvature
<b>Wellbore:</b> OH	
<b>Design:</b> PLAN #1	

Planned Survey									
Measured Depth (usft)	Inclination (°)	Azimuth (°)	Vertical Depth (usft)	+N/-S (usft)	+E/-W (usft)	Vertical Section (usft)	Dogleg Rate (°/100usft)	Build Rate (°/100u)	Comments / Formations
4,830.8	19.04	267.07	4,082.0	-118.5	-2,313.4	2,316.5	3.00	-3.00	WILLIAMS_FORK.MBL (SSTVD)
4,900.0	16.96	267.07	4,147.8	-119.6	-2,334.8	2,337.9	3.00	-3.00	
5,000.0	13.96	267.07	4,244.1	-120.9	-2,361.4	2,364.5	3.00	-3.00	
5,100.0	10.96	267.07	4,341.8	-122.0	-2,383.0	2,386.1	3.00	-3.00	
5,200.0	7.96	267.07	4,440.4	-122.9	-2,399.4	2,402.5	3.00	-3.00	
5,300.0	4.96	267.07	4,539.8	-123.5	-2,410.6	2,413.8	3.00	-3.00	
5,400.0	1.96	267.07	4,639.6	-123.8	-2,416.7	2,419.8	3.00	-3.00	
5,465.5	0.00	0.00	4,705.0	-123.8	-2,417.8	2,421.0	3.00	-3.00	Start 2324.0 hold at 5465.5 MD
5,500.0	0.00	0.00	4,739.5	-123.8	-2,417.8	2,421.0	0.00	0.00	
5,565.5	0.00	0.00	4,805.0	-123.8	-2,417.8	2,421.0	0.00	0.00	TOP_GAS.MBL (SSTVD)
5,600.0	0.00	0.00	4,839.5	-123.8	-2,417.8	2,421.0	0.00	0.00	
5,700.0	0.00	0.00	4,939.5	-123.8	-2,417.8	2,421.0	0.00	0.00	
5,800.0	0.00	0.00	5,039.5	-123.8	-2,417.8	2,421.0	0.00	0.00	
5,900.0	0.00	0.00	5,139.5	-123.8	-2,417.8	2,421.0	0.00	0.00	
6,000.0	0.00	0.00	5,239.5	-123.8	-2,417.8	2,421.0	0.00	0.00	
6,100.0	0.00	0.00	5,339.5	-123.8	-2,417.8	2,421.0	0.00	0.00	
6,200.0	0.00	0.00	5,439.5	-123.8	-2,417.8	2,421.0	0.00	0.00	
6,300.0	0.00	0.00	5,539.5	-123.8	-2,417.8	2,421.0	0.00	0.00	
6,400.0	0.00	0.00	5,639.5	-123.8	-2,417.8	2,421.0	0.00	0.00	
6,500.0	0.00	0.00	5,739.5	-123.8	-2,417.8	2,421.0	0.00	0.00	
6,600.0	0.00	0.00	5,839.5	-123.8	-2,417.8	2,421.0	0.00	0.00	
6,700.0	0.00	0.00	5,939.5	-123.8	-2,417.8	2,421.0	0.00	0.00	
6,800.0	0.00	0.00	6,039.5	-123.8	-2,417.8	2,421.0	0.00	0.00	
6,900.0	0.00	0.00	6,139.5	-123.8	-2,417.8	2,421.0	0.00	0.00	
7,000.0	0.00	0.00	6,239.5	-123.8	-2,417.8	2,421.0	0.00	0.00	
7,100.0	0.00	0.00	6,339.5	-123.8	-2,417.8	2,421.0	0.00	0.00	
7,169.5	0.00	0.00	6,409.0	-123.8	-2,417.8	2,421.0	0.00	0.00	CAMEO.MBL (SSTVD)
7,200.0	0.00	0.00	6,439.5	-123.8	-2,417.8	2,421.0	0.00	0.00	
7,300.0	0.00	0.00	6,539.5	-123.8	-2,417.8	2,421.0	0.00	0.00	
7,400.0	0.00	0.00	6,639.5	-123.8	-2,417.8	2,421.0	0.00	0.00	
7,500.0	0.00	0.00	6,739.5	-123.8	-2,417.8	2,421.0	0.00	0.00	
7,600.0	0.00	0.00	6,839.5	-123.8	-2,417.8	2,421.0	0.00	0.00	
7,639.5	0.00	0.00	6,879.0	-123.8	-2,417.8	2,421.0	0.00	0.00	ROLLINS.MBL (SSTVD)
7,700.0	0.00	0.00	6,939.5	-123.8	-2,417.8	2,421.0	0.00	0.00	
7,789.5	0.00	0.00	7,029.0	-123.8	-2,417.8	2,421.0	0.00	0.00	TD at 7789.5 - TD.MBL (SSTVD)

Targets									
Target Name	Dip Angle (°)	Dip Dir. (°)	TVD (usft)	+N/-S (usft)	+E/-W (usft)	Northing (usft)	Easting (usft)	Latitude	Longitude
CHEVRON 12A-17 PBH - hit/miss target - Shape - Circle (radius 50.0)	0.00	0.00	7,029.0	-123.8	-2,417.8	14,366,965.00	2,447,611.00	39.527852	-108.137609

## Planning Report

<b>Database:</b>	USA EDM 5000 Multi Users DB	<b>Local Co-ordinate Reference:</b>	Well CHEVRON 12A-17
<b>Company:</b>	Caerus Oil & Gas	<b>TVD Reference:</b>	30' KB @ 5613.0usft
<b>Project:</b>	Garfield County, CO (UTM 12N)	<b>MD Reference:</b>	30' KB @ 5613.0usft
<b>Site:</b>	S17-T6S-R96W (PC5A)	<b>North Reference:</b>	True
<b>Well:</b>	CHEVRON 12A-17	<b>Survey Calculation Method:</b>	Minimum Curvature
<b>Wellbore:</b>	OH		
<b>Design:</b>	PLAN #1		

Formations					
Measured Depth (usft)	Vertical Depth (usft)	Name	Lithology	Dip (°)	Dip Direction (°)
4,516.9	3,795.0	OHIO_CREEK.MBL (SSTVD)		0.00	
4,830.8	4,082.0	WILLIAMS_FORK.MBL (SSTVD)		0.00	
5,565.5	4,805.0	TOP_GAS.MBL (SSTVD)		0.00	
7,169.5	6,409.0	CAMEO.MBL (SSTVD)		0.00	
7,639.5	6,879.0	ROLLINS.MBL (SSTVD)		0.00	
7,789.5	7,029.0	TD.MBL (SSTVD)		0.00	

Plan Annotations					
Measured Depth (usft)	Vertical Depth (usft)	Local Coordinates		Comment	
		+N/-S (usft)	+E/-W (usft)		
400.0	400.0	0.0	0.0	Start Build 3.00	
1,718.3	1,616.1	-22.4	-436.6	Start 2428.9 hold at 1718.3 MD	
4,147.2	3,488.9	-101.5	-1,981.1	Start Drop -3.00	
5,465.5	4,705.0	-123.8	-2,417.8	Start 2324.0 hold at 5465.5 MD	
7,789.5	7,029.0	-123.8	-2,417.8	TD at 7789.5	