

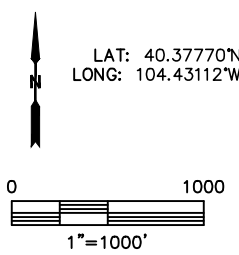
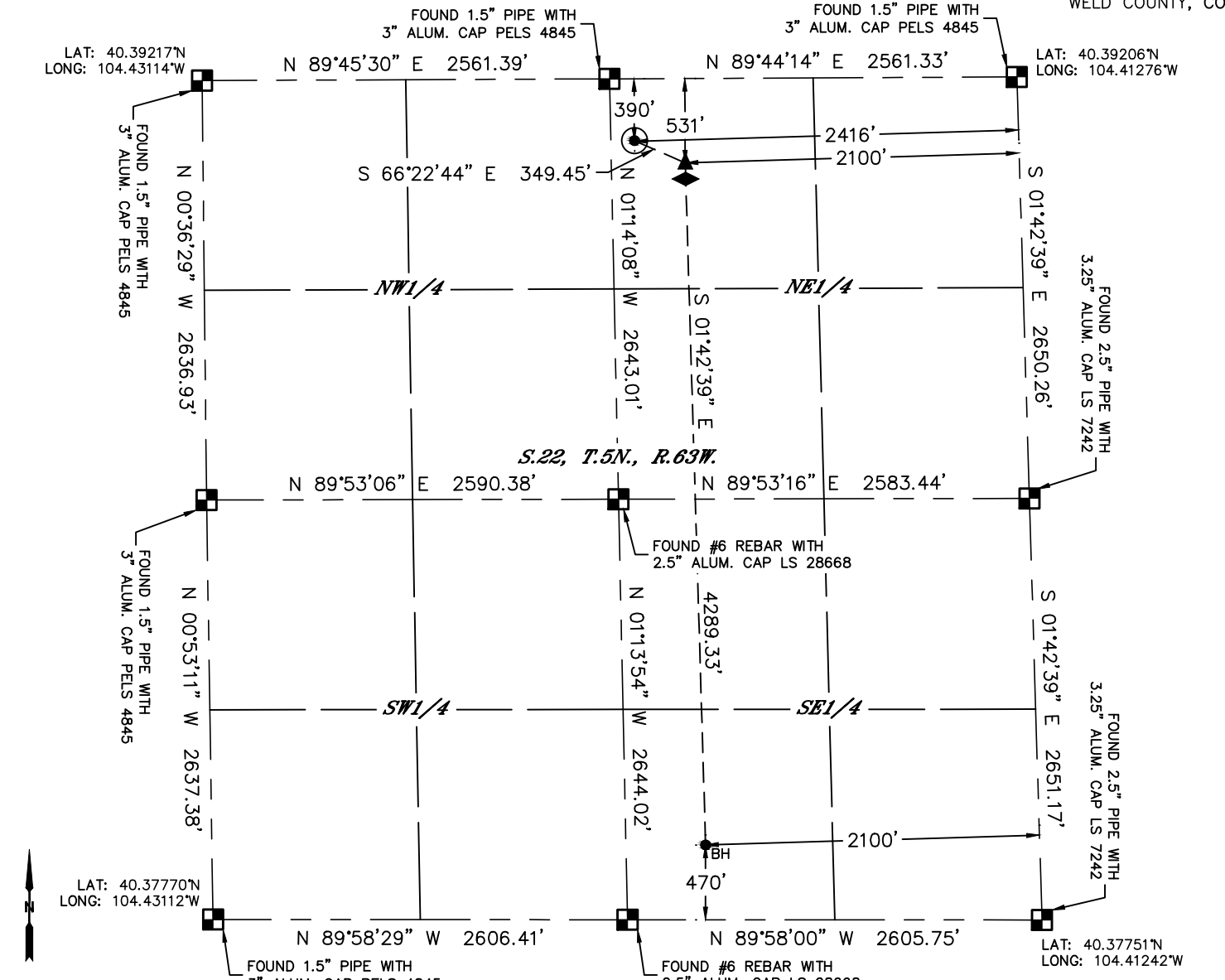


Lat40°, Inc. 6250 W. 10th Street, Unit 2, Greeley, CO 970-515-5294

WELL LOCATION CERTIFICATE

NORTH PLATTE FEDERAL K31-O34-22HNC

SECTION: 22
TOWNSHIP: 5N
RANGE: 63W
6TH. P.M.
WELD COUNTY, CO



- LEGEND**
- = ALIQUOT MONUMENT AS DESCRIBED
 - = CALCULATED POSITION
 - = SURFACE HOLE LOCATION (SHL)
 - ▲ = ENTRY POINT LOCATION (EP)
 - ◆ = TOP OF PRODUCTION ZONE (TPZ)
 - _{BH} = BOTTOM HOLE LOCATION (BHL)
 - ⊕ = EXISTING WELL
 - ⊖ = ABANDONED WELL

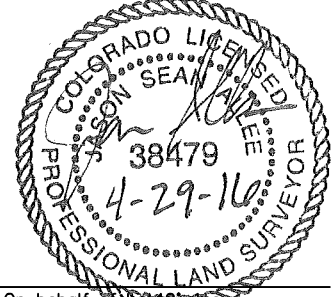
CLIENT: BONANZA CREEK ENERGY				LANDMAN: JULIE VIGIL					
INSTRUMENT OPERATOR: CHASE MILLER				SURVEY DATE: 8/10/2015		SURFACE USE: EX. PAD/RANGELAND			
SHL FOOTAGE	SHL LAT°	SHL LONG°	SHL PDOP	SHL ELEV	SHL 1/4/1/4	SHL S-T-R			
390	FNL	2416	FEL	40.39104	-104.42140	1.9	4647	NWNE	22-5-63

BHL FOOTAGE	BHL LAT°	BHL LONG°	BHL S-T-R	EP LAT°	EP LONG°	EP S-T-R
470	FSL	2100	FEL	40.37888	-104.41999	22-5-63

NEAREST CULTURAL ITEMS	
BUILDING	±4058' SE
BUILDING UNIT	±4058' SE
HIGH OCCUPANCY BUILDING UNIT	+5280'
DESIGNATED OUTSIDE ACTIVITY AREA	+5280'
PUBLIC ROAD	+5280'
ABOVE GROUND UTILITY	±3869' SE
RAILROAD	+5280'
PROPERTY LINE	±390' N

NOTE:

- 1) Bearings shown are Grid Bearings of the Colorado State Plane Coordinate System, North Zone, North American Datum 1983. The lineal dimensions as contained herein are based upon the "U.S. Survey Foot."
- 2) Distances to section lines measured at 90 degrees from said section lines.
- 3) Ground elevations are based on an observed GPS elevation (NAVD 1988 DATUM).
- 4) Latitude and Longitude shown are (NAD 83 DATUM).
- 5) IMPROVEMENTS: See LOCATION DRAWING for all visible improvements within 500' of oil and gas location.



Jason S. Allee—On behalf of
Colorado Licensed Professional Land Surveyor No. 38479
DATE: rev4/49/2016
PROJECT#: 2015005