

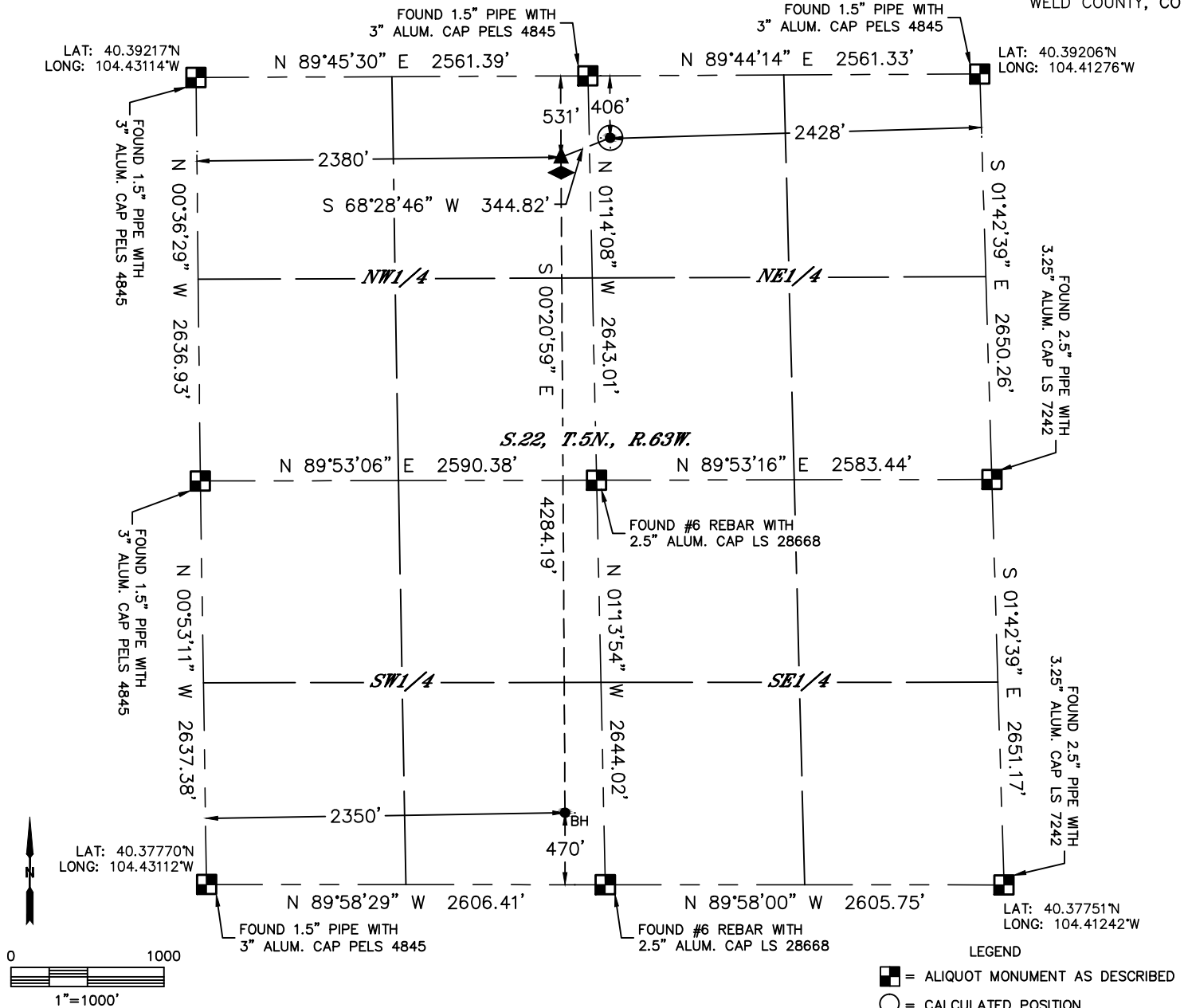


Lat40°, Inc. 6250 W. 10th Street, Unit 2, Greeley, CO 970-515-5294

# WELL LOCATION CERTIFICATE

NORTH PLATTE FEDERAL K21-O24-22HNC

SECTION: 22  
TOWNSHIP: 5N  
RANGE: 63W  
6TH. P.M.  
WELD COUNTY, CO



CLIENT: BONANZA CREEK ENERGY						LANDMAN: JULIE VIGIL			
INSTRUMENT OPERATOR: CHASE MILLER						SURVEY DATE: 8/10/2015		SURFACE USE: EX. PAD/RANGELAND	
SHL FOOTAGE				SHL LAT °	SHL LONG °	SHL PDOP	SHL ELEV	SHL 1/4/1/4	SHL S-T-R
406	FNL	2428	FEL	40.39100	-104.42145	1.8	4648	NWNE	22-5-63

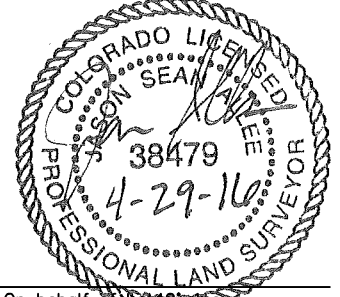
BHL FOOTAGE				BHL LAT °	BHL LONG °	BHL S-T-R	EP LAT °	EP LONG °	EP S-T-R
470	FSL	2350	FWL	40.37890	-104.42269	22-5-63	40.39066	-104.42260	22-5-63

NEAREST CULTURAL ITEMS	
BUILDING	±4055' SE
BUILDING UNIT	±4055' SE
HIGH OCCUPANCY BUILDING UNIT	+5280'
DESIGNATED OUTSIDE ACTIVITY AREA	+5280'
PUBLIC ROAD	+5280'
ABOVE GROUND UTILITY	±3865' SE
RAILROAD	+5280'
PROPERTY LINE	±406' N

## NOTE:

- 1) Bearings shown are Grid Bearings of the Colorado State Plane Coordinate System, North Zone, North American Datum 1983. The lineal dimensions as contained herein are based upon the "U.S. Survey Foot."
- 2) Distances to section lines measured at 90 degrees from said section lines.
- 3) Ground elevations are based on an observed GPS elevation (NAVD 1988 DATUM).
- 4) Latitude and Longitude shown are (NAD 83 DATUM).
- 5) IMPROVEMENTS: See LOCATION DRAWING for all visible improvements within 500' of oil and gas location.

- LEGEND
- = ALIQUOT MONUMENT AS DESCRIBED
  - = CALCULATED POSITION
  - = SURFACE HOLE LOCATION (SHL)
  - ▲ = ENTRY POINT LOCATION (EP)
  - ◆ = TOP OF PRODUCTION ZONE (TPZ)
  - = BOTTOM HOLE LOCATION (BHL)
  - ⊙ = EXISTING WELL
  - ⊙ = ABANDONED WELL



Jason S. Allee—On behalf of Lat40, Inc.  
Colorado Licensed Professional Land Surveyor No. 38479  
DATE: rev4/29/2016  
PROJECT#: 2015005