



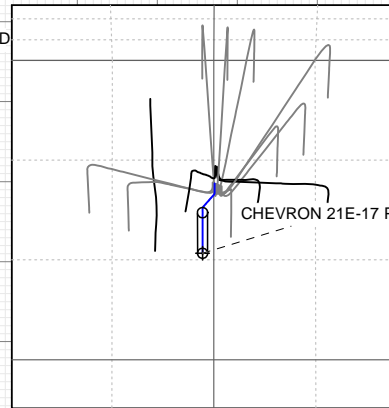
# SECTION DETAILS

Sec	MD	Inc	Azi	TVD	+N/-S	+E/-W	Dleg	TFace	VSec	Target
1	0.0	0.00	0.00	0.0	0.0	0.0	0.00	0.00	0.0	
2	350.0	0.00	0.00	350.0	0.0	0.0	0.00	0.00	0.0	
3	665.4	9.46	261.05	664.0	-4.0	-25.7	3.00	261.05	26.0	
4	4683.1	9.46	261.05	4627.0	-106.8	-678.1	0.00	0.00	686.5	
5	4998.5	0.00	0.00	4941.0	-110.8	-703.8	3.00	180.00	712.5	
6	7165.5	0.00	0.00	7108.0	-110.8	-703.8	0.00	0.00	712.5	CHEVRON 21E-17 PBHL

Project: Garfield County, CO (UTM 12  
Site: S17-T6S-R96W (PC5A)  
Well: CHEVRON 21E-17  
Wellbore: OH  
Design: PLAN #1

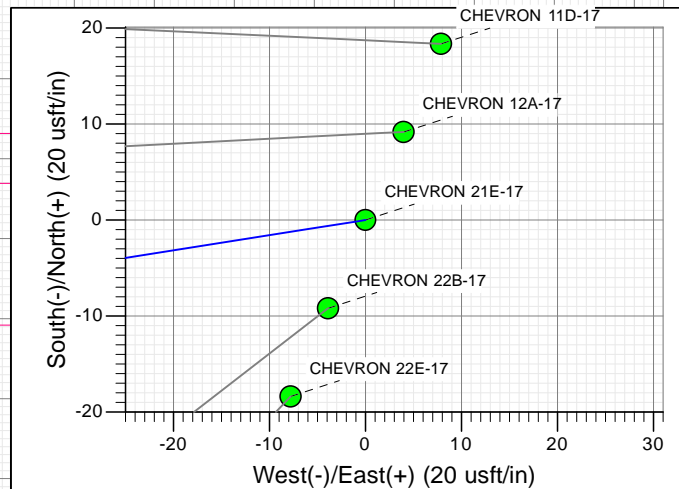
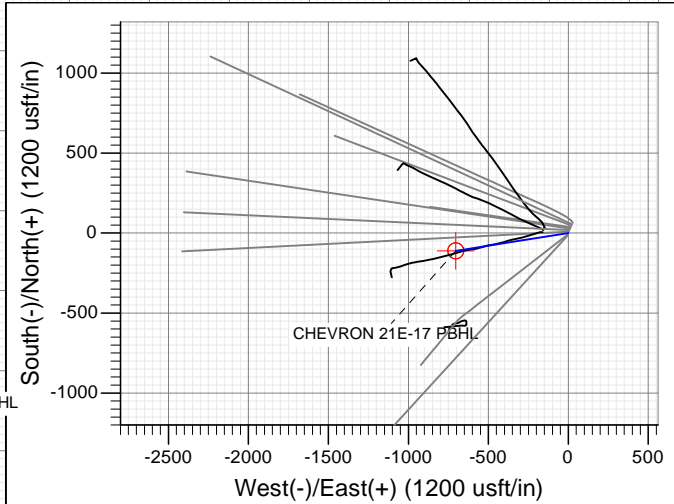
## FORMATION TOP DETAILS

TVDPath	MDPath	Formation
3842.0	3887.3	OHIO_CREEK.MBL (SSTVD)
4154.0	4203.6	WILLIAMS_FORK.MBL (SSTVD)
5041.0	5098.5	TOP_GAS.MBL (SSTVD)
6488.0	6545.5	CAMEO.MBL (SSTVD)
6958.0	7015.5	ROLLINS.MBL (SSTVD)
7108.0	7165.5	TD.MBL (SSTVD)



PLAN #1  
CHEVRON 21E-17  
15XXX; LR  
30' KB @ 5613.0ust  
Ground Level @ 5583.0  
NAD 1927 - Western US  
Well CHEVRON 21E-17, True North

Name	Type	TD	Target	No Target (Freehand)	Azimuth	Origin	Type	N/S	E/W	From	TVD	Latitude	Longitude
CHEVRON 21E-17 PBHL	TD				261.05		Slot	0.0	0.0	0.0	7108.0	39.527863	-108.131549

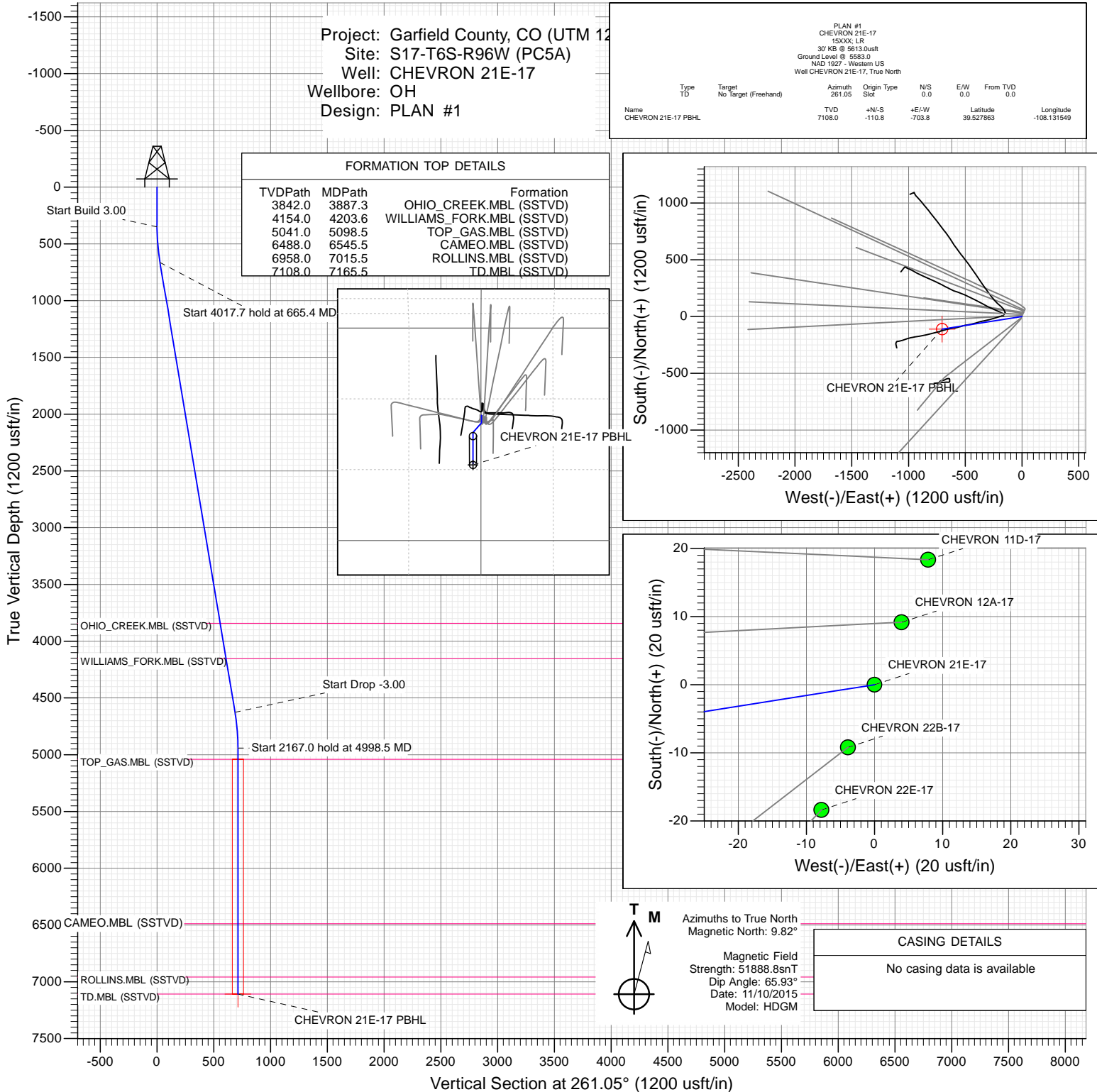


Azimuths to True North  
Magnetic North: 9.82°

Magnetic Field  
Strength: 51888.8snT  
Dip Angle: 65.93°  
Date: 11/10/2015  
Model: HDGM

## CASING DETAILS

No casing data is available



## WELL DETAILS: CHEVRON 21E-17

+N/-S	+E/-W	Northing	Ground Level:	5583.0	Easting	Latitude	Longitude
0.0	0.0	14367156.60			2450019.90	39.528167	-108.129055



## Planning Report

<b>Database:</b>	USA EDM 5000 Multi Users DB	<b>Local Co-ordinate Reference:</b>	Well CHEVRON 21E-17
<b>Company:</b>	Caerus Oil & Gas	<b>TVD Reference:</b>	30' KB @ 5613.0usft
<b>Project:</b>	Garfield County, CO (UTM 12N)	<b>MD Reference:</b>	30' KB @ 5613.0usft
<b>Site:</b>	S17-T6S-R96W (PC5A)	<b>North Reference:</b>	True
<b>Well:</b>	CHEVRON 21E-17	<b>Survey Calculation Method:</b>	Minimum Curvature
<b>Wellbore:</b>	OH		
<b>Design:</b>	PLAN #1		

<b>Project</b>	Garfield County, CO (UTM 12N)		
<b>Map System:</b>	Universal Transverse Mercator (US Survey Feet)	<b>System Datum:</b>	Mean Sea Level
<b>Geo Datum:</b>	NAD 1927 - Western US		
<b>Map Zone:</b>	Zone 12N (114 W to 108 W)		

Site		S17-T6S-R96W (PC5A)			
Site Position:		Northing:	14,367,212.50 usft	Latitude:	39.528318
From:	Map	Easting:	2,450,041.70 usft	Longitude:	-108.128972
Position Uncertainty:	0.0 usft	Slot Radius:	13-3/16 "	Grid Convergence:	1.83 °

Well	CHEVRON 21E-17					
Well Position	+N/-S	0.0 usft	Northing:	14,367,156.60 usft	Latitude:	39.528167
	+E/-W	0.0 usft	Easting:	2,450,019.90 usft	Longitude:	-108.129055
Position Uncertainty		0.0 usft	Wellhead Elevation:	0.0 usft	Ground Level:	5,583.0 usft

<b>Wellbore</b>	OH				
<b>Magnetics</b>	<b>Model Name</b>	<b>Sample Date</b>	<b>Declination (°)</b>	<b>Dip Angle (°)</b>	<b>Field Strength (nT)</b>
	HDGM	11/10/2015	9.82	65.93	51,889

<b>Design</b>	PLAN #1			
<b>Audit Notes:</b>				
<b>Version:</b>	<b>Phase:</b>	PLAN	<b>Tie On Depth:</b>	0.0
<b>Vertical Section:</b>	<b>Depth From (TVD) (usft)</b>	<b>+N/-S (usft)</b>	<b>+E/-W (usft)</b>	<b>Direction (°)</b>
	0.0	0.0	0.0	261.05

<b>Plan Sections</b>										
Measured Depth (usft)	Inclination (°)	Azimuth (°)	Vertical Depth (usft)	+N/-S (usft)	+E/-W (usft)	Dogleg Rate (°/100usft)	Build Rate (°/100usft)	Turn Rate (°/100usft)	TFO (°)	Target
0.0	0.00	0.00	0.0	0.0	0.0	0.00	0.00	0.00	0.00	
350.0	0.00	0.00	350.0	0.0	0.0	0.00	0.00	0.00	0.00	
665.4	9.46	261.05	664.0	-4.0	-25.7	3.00	3.00	0.00	261.05	
4,683.1	9.46	261.05	4,627.0	-106.8	-678.1	0.00	0.00	0.00	0.00	
4,998.5	0.00	0.00	4,941.0	-110.8	-703.8	3.00	-3.00	0.00	180.00	
7,165.5	0.00	0.00	7,108.0	-110.8	-703.8	0.00	0.00	0.00	0.00	CHEVRON 21E-17 PI

# Planning Report

<b>Database:</b>	USA EDM 5000 Multi Users DB	<b>Local Co-ordinate Reference:</b>	Well CHEVRON 21E-17
<b>Company:</b>	Caerus Oil & Gas	<b>TVD Reference:</b>	30' KB @ 5613.0usft
<b>Project:</b>	Garfield County, CO (UTM 12N)	<b>MD Reference:</b>	30' KB @ 5613.0usft
<b>Site:</b>	S17-T6S-R96W (PC5A)	<b>North Reference:</b>	True
<b>Well:</b>	CHEVRON 21E-17	<b>Survey Calculation Method:</b>	Minimum Curvature
<b>Wellbore:</b>	OH		
<b>Design:</b>	PLAN #1		

Planned Survey									
Measured Depth (usft)	Inclination (°)	Azimuth (°)	Vertical Depth (usft)	+N/-S (usft)	+E/-W (usft)	Vertical Section (usft)	Dogleg Rate (°/100usft)	Build Rate (°/100u)	Comments / Formations
0.0	0.00	0.00	0.0	0.0	0.0	0.0	0.00	0.00	
100.0	0.00	0.00	100.0	0.0	0.0	0.0	0.00	0.00	
200.0	0.00	0.00	200.0	0.0	0.0	0.0	0.00	0.00	
300.0	0.00	0.00	300.0	0.0	0.0	0.0	0.00	0.00	
350.0	0.00	0.00	350.0	0.0	0.0	0.0	0.00	0.00	Start Build 3.00
400.0	1.50	261.05	400.0	-0.1	-0.6	0.7	3.00	3.00	
500.0	4.50	261.05	499.8	-0.9	-5.8	5.9	3.00	3.00	
600.0	7.50	261.05	599.3	-2.5	-16.1	16.3	3.00	3.00	
665.4	9.46	261.05	664.0	-4.0	-25.7	26.0	3.00	3.00	Start 4017.7 hold at 665.4 MD
700.0	9.46	261.05	698.1	-4.9	-31.3	31.7	0.00	0.00	
800.0	9.46	261.05	796.7	-7.5	-47.5	48.1	0.00	0.00	
900.0	9.46	261.05	895.4	-10.0	-63.8	64.6	0.00	0.00	
1,000.0	9.46	261.05	994.0	-12.6	-80.0	81.0	0.00	0.00	
1,100.0	9.46	261.05	1,092.7	-15.2	-96.2	97.4	0.00	0.00	
1,200.0	9.46	261.05	1,191.3	-17.7	-112.5	113.9	0.00	0.00	
1,300.0	9.46	261.05	1,289.9	-20.3	-128.7	130.3	0.00	0.00	
1,400.0	9.46	261.05	1,388.6	-22.8	-145.0	146.7	0.00	0.00	
1,500.0	9.46	261.05	1,487.2	-25.4	-161.2	163.2	0.00	0.00	
1,600.0	9.46	261.05	1,585.9	-27.9	-177.4	179.6	0.00	0.00	
1,700.0	9.46	261.05	1,684.5	-30.5	-193.7	196.1	0.00	0.00	
1,800.0	9.46	261.05	1,783.1	-33.0	-209.9	212.5	0.00	0.00	
1,900.0	9.46	261.05	1,881.8	-35.6	-226.2	228.9	0.00	0.00	
2,000.0	9.46	261.05	1,980.4	-38.2	-242.4	245.4	0.00	0.00	
2,100.0	9.46	261.05	2,079.1	-40.7	-258.6	261.8	0.00	0.00	
2,200.0	9.46	261.05	2,177.7	-43.3	-274.9	278.3	0.00	0.00	
2,300.0	9.46	261.05	2,276.3	-45.8	-291.1	294.7	0.00	0.00	
2,400.0	9.46	261.05	2,375.0	-48.4	-307.4	311.1	0.00	0.00	
2,500.0	9.46	261.05	2,473.6	-50.9	-323.6	327.6	0.00	0.00	
2,600.0	9.46	261.05	2,572.2	-53.5	-339.8	344.0	0.00	0.00	
2,700.0	9.46	261.05	2,670.9	-56.1	-356.1	360.5	0.00	0.00	
2,800.0	9.46	261.05	2,769.5	-58.6	-372.3	376.9	0.00	0.00	
2,900.0	9.46	261.05	2,868.2	-61.2	-388.6	393.3	0.00	0.00	
3,000.0	9.46	261.05	2,966.8	-63.7	-404.8	409.8	0.00	0.00	
3,100.0	9.46	261.05	3,065.4	-66.3	-421.0	426.2	0.00	0.00	
3,200.0	9.46	261.05	3,164.1	-68.8	-437.3	442.7	0.00	0.00	
3,300.0	9.46	261.05	3,262.7	-71.4	-453.5	459.1	0.00	0.00	
3,400.0	9.46	261.05	3,361.4	-74.0	-469.8	475.5	0.00	0.00	
3,500.0	9.46	261.05	3,460.0	-76.5	-486.0	492.0	0.00	0.00	
3,600.0	9.46	261.05	3,558.6	-79.1	-502.2	508.4	0.00	0.00	
3,700.0	9.46	261.05	3,657.3	-81.6	-518.5	524.9	0.00	0.00	
3,800.0	9.46	261.05	3,755.9	-84.2	-534.7	541.3	0.00	0.00	
3,887.3	9.46	261.05	3,842.0	-86.4	-548.9	555.6	0.00	0.00	OHIO_CREEK.MBL (SSTVD)
3,900.0	9.46	261.05	3,854.6	-86.7	-550.9	557.7	0.00	0.00	
4,000.0	9.46	261.05	3,953.2	-89.3	-567.2	574.2	0.00	0.00	
4,100.0	9.46	261.05	4,051.8	-91.9	-583.4	590.6	0.00	0.00	
4,200.0	9.46	261.05	4,150.5	-94.4	-599.7	607.1	0.00	0.00	
4,203.6	9.46	261.05	4,154.0	-94.5	-600.2	607.6	0.00	0.00	WILLIAMS_FORK.MBL (SSTVD)
4,300.0	9.46	261.05	4,249.1	-97.0	-615.9	623.5	0.00	0.00	
4,400.0	9.46	261.05	4,347.8	-99.5	-632.1	639.9	0.00	0.00	
4,500.0	9.46	261.05	4,446.4	-102.1	-648.4	656.4	0.00	0.00	
4,600.0	9.46	261.05	4,545.0	-104.6	-664.6	672.8	0.00	0.00	
4,683.1	9.46	261.05	4,627.0	-106.8	-678.1	686.5	0.00	0.00	Start Drop -3.00

## Planning Report

<b>Database:</b>	USA EDM 5000 Multi Users DB	<b>Local Co-ordinate Reference:</b>	Well CHEVRON 21E-17
<b>Company:</b>	Caerus Oil & Gas	<b>TVD Reference:</b>	30' KB @ 5613.0usft
<b>Project:</b>	Garfield County, CO (UTM 12N)	<b>MD Reference:</b>	30' KB @ 5613.0usft
<b>Site:</b>	S17-T6S-R96W (PC5A)	<b>North Reference:</b>	True
<b>Well:</b>	CHEVRON 21E-17	<b>Survey Calculation Method:</b>	Minimum Curvature
<b>Wellbore:</b>	OH		
<b>Design:</b>	PLAN #1		

### Planned Survey

Measured Depth (usft)	Inclination (°)	Azimuth (°)	Vertical Depth (usft)	+N/-S (usft)	+E/-W (usft)	Vertical Section (usft)	Dogleg Rate (°/100usft)	Build Rate (°/100u)	Comments / Formations
4,700.0	8.96	261.05	4,643.7	-107.2	-680.8	689.2	3.00	-3.00	
4,800.0	5.96	261.05	4,742.8	-109.2	-693.6	702.2	3.00	-3.00	
4,900.0	2.96	261.05	4,842.5	-110.4	-701.3	709.9	3.00	-3.00	
4,998.5	0.00	0.00	4,941.0	-110.8	-703.8	712.5	3.00	-3.00	Start 2167.0 hold at 4998.5 MD
5,000.0	0.00	0.00	4,942.5	-110.8	-703.8	712.5	0.00	0.00	
5,098.5	0.00	0.00	5,041.0	-110.8	-703.8	712.5	0.00	0.00	TOP_GAS.MBL (SSTVD)
5,100.0	0.00	0.00	5,042.5	-110.8	-703.8	712.5	0.00	0.00	
5,200.0	0.00	0.00	5,142.5	-110.8	-703.8	712.5	0.00	0.00	
5,300.0	0.00	0.00	5,242.5	-110.8	-703.8	712.5	0.00	0.00	
5,400.0	0.00	0.00	5,342.5	-110.8	-703.8	712.5	0.00	0.00	
5,500.0	0.00	0.00	5,442.5	-110.8	-703.8	712.5	0.00	0.00	
5,600.0	0.00	0.00	5,542.5	-110.8	-703.8	712.5	0.00	0.00	
5,700.0	0.00	0.00	5,642.5	-110.8	-703.8	712.5	0.00	0.00	
5,800.0	0.00	0.00	5,742.5	-110.8	-703.8	712.5	0.00	0.00	
5,900.0	0.00	0.00	5,842.5	-110.8	-703.8	712.5	0.00	0.00	
6,000.0	0.00	0.00	5,942.5	-110.8	-703.8	712.5	0.00	0.00	
6,100.0	0.00	0.00	6,042.5	-110.8	-703.8	712.5	0.00	0.00	
6,200.0	0.00	0.00	6,142.5	-110.8	-703.8	712.5	0.00	0.00	
6,300.0	0.00	0.00	6,242.5	-110.8	-703.8	712.5	0.00	0.00	
6,400.0	0.00	0.00	6,342.5	-110.8	-703.8	712.5	0.00	0.00	
6,500.0	0.00	0.00	6,442.5	-110.8	-703.8	712.5	0.00	0.00	
6,545.5	0.00	0.00	6,488.0	-110.8	-703.8	712.5	0.00	0.00	CAMEO.MBL (SSTVD)
6,600.0	0.00	0.00	6,542.5	-110.8	-703.8	712.5	0.00	0.00	
6,700.0	0.00	0.00	6,642.5	-110.8	-703.8	712.5	0.00	0.00	
6,800.0	0.00	0.00	6,742.5	-110.8	-703.8	712.5	0.00	0.00	
6,900.0	0.00	0.00	6,842.5	-110.8	-703.8	712.5	0.00	0.00	
7,000.0	0.00	0.00	6,942.5	-110.8	-703.8	712.5	0.00	0.00	
7,015.5	0.00	0.00	6,958.0	-110.8	-703.8	712.5	0.00	0.00	ROLLINS.MBL (SSTVD)
7,100.0	0.00	0.00	7,042.5	-110.8	-703.8	712.5	0.00	0.00	
7,165.5	0.00	0.00	7,108.0	-110.8	-703.8	712.5	0.00	0.00	TD at 7165.5 - TD.MBL (SSTVD)

### Targets

Target Name	Dip Angle (°)	Dip Dir. (°)	TVD (usft)	+N/-S (usft)	+E/-W (usft)	Northing (usft)	Easting (usft)	Latitude	Longitude
CHEVRON 21E-17 PBH	0.00	0.00	7,108.0	-110.8	-703.8	14,367,023.40	2,449,320.00	39.527863	-108.131549
- hit/miss target									
- Shape									
- plan hits target center									
- Circle (radius 50.0)									

## Planning Report

<b>Database:</b>	USA EDM 5000 Multi Users DB	<b>Local Co-ordinate Reference:</b>	Well CHEVRON 21E-17
<b>Company:</b>	Caerus Oil & Gas	<b>TVD Reference:</b>	30' KB @ 5613.0usft
<b>Project:</b>	Garfield County, CO (UTM 12N)	<b>MD Reference:</b>	30' KB @ 5613.0usft
<b>Site:</b>	S17-T6S-R96W (PC5A)	<b>North Reference:</b>	True
<b>Well:</b>	CHEVRON 21E-17	<b>Survey Calculation Method:</b>	Minimum Curvature
<b>Wellbore:</b>	OH		
<b>Design:</b>	PLAN #1		

Formations						
Measured Depth (usft)	Vertical Depth (usft)	Name	Lithology	Dip (°)	Dip Direction (°)	
3,887.3	3,842.0	OHIO_CREEK.MBL (SSTVD)		0.00		
4,203.6	4,154.0	WILLIAMS_FORK.MBL (SSTVD)		0.00		
5,098.5	5,041.0	TOP_GAS.MBL (SSTVD)		0.00		
6,545.5	6,488.0	CAMEO.MBL (SSTVD)		0.00		
7,015.5	6,958.0	ROLLINS.MBL (SSTVD)		0.00		
7,165.5	7,108.0	TD.MBL (SSTVD)		0.00		

Plan Annotations					
Measured Depth (usft)	Vertical Depth (usft)	Local Coordinates			
		+N/-S (usft)	+E/-W (usft)	Comment	
350.0	350.0	0.0	0.0	Start Build 3.00	
665.4	664.0	-4.0	-25.7	Start 4017.7 hold at 665.4 MD	
4,683.1	4,627.0	-106.8	-678.1	Start Drop -3.00	
4,998.5	4,941.0	-110.8	-703.8	Start 2167.0 hold at 4998.5 MD	
7,165.5	7,108.0	-110.8	-703.8	TD at 7165.5	