



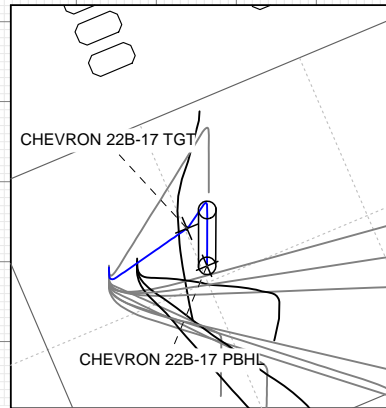
SECTION DETAILS

Sec	MD	Inc	Azi	TVD	+N/-S	+E/-W	Dleg	TFace	VSect	Target
1	0.0	0.00	0.00	0.0	0.0	0.0	0.00	0.00	0.0	
2	250.0	0.00	0.00	250.0	0.0	0.0	0.00	0.00	0.0	
3	803.3	16.60	232.19	795.6	-48.8	-62.9	3.00	232.19	79.4	
4	3480.6	16.60	232.19	3361.3	-517.7	-667.1	0.00	0.00	842.6	
5	3493.4	16.45	230.94	3373.6	-520.0	-670.0	3.00	-113.52	846.2	CHEVRON 22B-17 TGT
6	3601.4	16.57	219.54	3477.1	-541.5	-691.7	3.00	-93.35	876.7	
7	4568.7	16.57	219.54	4404.3	-754.3	-867.3	0.00	0.00	1149.3	
8	5121.1	0.00	0.00	4949.0	-815.4	-917.8	3.00	180.00	1227.7	
9	7250.1	0.00	0.00	7078.0	-815.4	-917.8	0.00	0.00	1227.7	CHEVRON 22B-17 PBHL

Project: Garfield County, CO (UTM 12
Site: S17-T6S-R96W (PC5A)
Well: CHEVRON 22B-17
Wellbore: OH
Design: PLAN #1

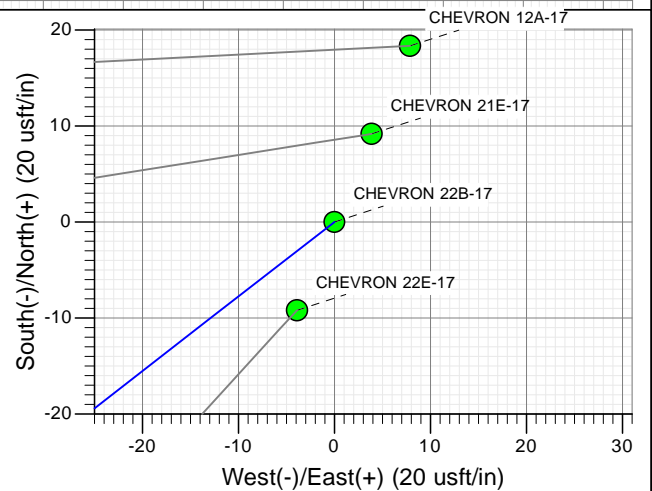
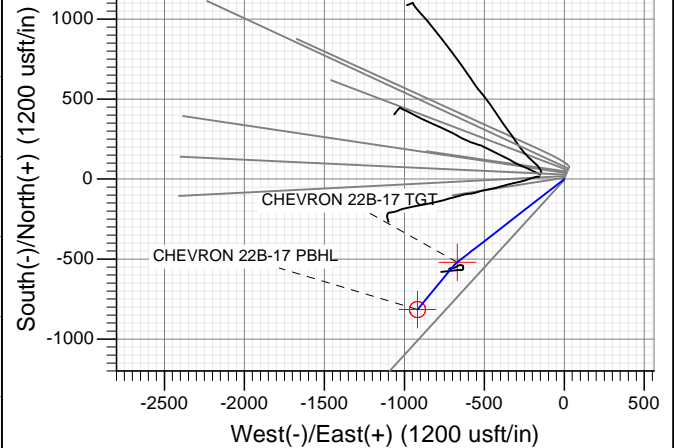
FORMATION TOP DETAILS

TVDPath	MDPath	Formation
3835.0	3974.7	OHIO_CREEK.MBL (SSTVD)
4123.0	4275.2	WILLIAMS_FORK.MBL (SSTVD)
5049.0	5221.1	TOP_GAS.MBL (SSTVD)
6458.0	6630.1	CAMEO.MBL (SSTVD)
6928.0	7100.1	ROLLINS.MBL (SSTVD)



PLAN #1
CHEVRON 22B-17
15XXX LR
30' KS @ 5613.0usft
Ground Level @ 5583.0
NAD 1927 - Western US
Well CHEVRON 22B-17, True North

Name	Type	TD	Target	No Target (Freehand)	Azimuth	Origin	Type	N/S	E/W	From	TVD	0.0
CHEVRON 22B-17 TGT					3373.6			+N/-S	+E/-W	Latitude		
CHEVRON 22B-17 PBHL					7078.0			-815.4	-917.8	39.528715		
										-108.131443		
										-108.132321		

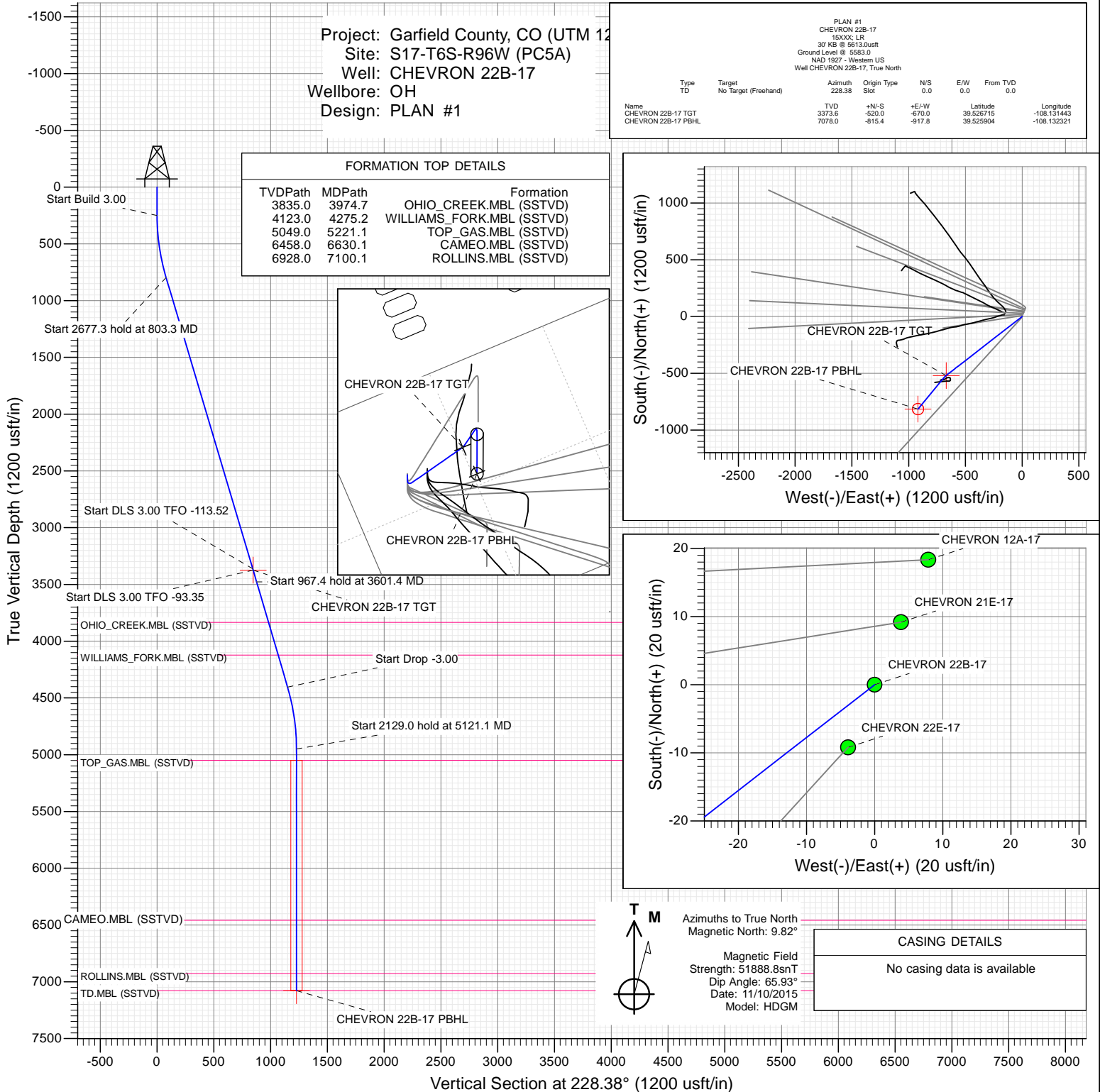


Azimuths to True North
Magnetic North: 9.82°

Magnetic Field
Strength: 51888.8snT
Dip Angle: 65.93°
Date: 11/10/2015
Model: HDGM

CASING DETAILS

No casing data is available



WELL DETAILS: CHEVRON 22B-17

+N/-S	+E/-W	Northing	Ground Level:	5583.0	Latitude	Longitude
0.0	0.0	14367147.30	Easting	2450016.30	39.528712	-108.129069

CATHEDRAL



Planning Report

Database:	USA EDM 5000 Multi Users DB	Local Co-ordinate Reference:	Well CHEVRON 22B-17
Company:	Caerus Oil & Gas	TVD Reference:	30' KB @ 5613.0usft
Project:	Garfield County, CO (UTM 12N)	MD Reference:	30' KB @ 5613.0usft
Site:	S17-T6S-R96W (PC5A)	North Reference:	True
Well:	CHEVRON 22B-17	Survey Calculation Method:	Minimum Curvature
Wellbore:	OH		
Design:	PLAN #1		

Project	Garfield County, CO (UTM 12N)		
Map System:	Universal Transverse Mercator (US Survey Feet)	System Datum:	Mean Sea Level
Geo Datum:	NAD 1927 - Western US		
Map Zone:	Zone 12N (114 W to 108 W)		

Site		S17-T6S-R96W (PC5A)			
Site Position:		Northing:	14,367,212.50 usft	Latitude:	39.528318
From:	Map	Easting:	2,450,041.70 usft	Longitude:	-108.128972
Position Uncertainty:	0.0 usft	Slot Radius:	13-3/16 "	Grid Convergence:	1.83 °

Well	CHEVRON 22B-17					
Well Position	+N/-S	0.0 usft	Northing:	14,367,147.30 usft	Latitude:	39.528142
	+E/-W	0.0 usft	Easting:	2,450,016.30 usft	Longitude:	-108.129069
Position Uncertainty		0.0 usft	Wellhead Elevation:	0.0 usft	Ground Level:	5,583.0 usft

Wellbore	OH				
Magnetics	Model Name	Sample Date	Declination (°)	Dip Angle (°)	Field Strength (nT)
	HDGM	11/10/2015	9.82	65.93	51,889

Design	PLAN #1			
Audit Notes:				
Version:	Phase:	PLAN	Tie On Depth:	0.0
Vertical Section:	Depth From (TVD) (usft)	+N/-S (usft)	+E/-W (usft)	Direction (°)
	0.0	0.0	0.0	228.38

Plan Sections										
Measured Depth (usft)	Inclination (°)	Azimuth (°)	Vertical Depth (usft)	+N/-S (usft)	+E/-W (usft)	Dogleg Rate (°/100usft)	Build Rate (°/100usft)	Turn Rate (°/100usft)	TFO (°)	Target
0.0	0.00	0.00	0.0	0.0	0.0	0.00	0.00	0.00	0.00	
250.0	0.00	0.00	250.0	0.0	0.0	0.00	0.00	0.00	0.00	
803.3	16.60	232.19	795.6	-48.8	-62.9	3.00	3.00	0.00	232.19	
3,480.6	16.60	232.19	3,361.3	-517.7	-667.1	0.00	0.00	0.00	0.00	
3,493.4	16.45	230.94	3,373.6	-520.0	-670.0	3.00	-1.17	-9.71	-113.52	CHEVRON 22B-17 T
3,601.4	16.57	219.54	3,477.1	-541.5	-691.7	3.00	0.11	-10.57	-93.35	
4,568.7	16.57	219.54	4,404.3	-754.3	-867.3	0.00	0.00	0.00	0.00	
5,121.1	0.00	0.00	4,949.0	-815.4	-917.8	3.00	-3.00	0.00	180.00	
7,250.1	0.00	0.00	7,078.0	-815.4	-917.8	0.00	0.00	0.00	0.00	CHEVRON 22B-17 PI

Planning Report

Database:	USA EDM 5000 Multi Users DB	Local Co-ordinate Reference:	Well CHEVRON 22B-17
Company:	Caerus Oil & Gas	TVD Reference:	30' KB @ 5613.0usft
Project:	Garfield County, CO (UTM 12N)	MD Reference:	30' KB @ 5613.0usft
Site:	S17-T6S-R96W (PC5A)	North Reference:	True
Well:	CHEVRON 22B-17	Survey Calculation Method:	Minimum Curvature
Wellbore:	OH		
Design:	PLAN #1		

Planned Survey									
Measured Depth (usft)	Inclination (°)	Azimuth (°)	Vertical Depth (usft)	+N/-S (usft)	+E/-W (usft)	Vertical Section (usft)	Dogleg Rate (°/100usft)	Build Rate (°/100u)	Comments / Formations
0.0	0.00	0.00	0.0	0.0	0.0	0.0	0.00	0.00	
100.0	0.00	0.00	100.0	0.0	0.0	0.0	0.00	0.00	
200.0	0.00	0.00	200.0	0.0	0.0	0.0	0.00	0.00	
250.0	0.00	0.00	250.0	0.0	0.0	0.0	0.00	0.00	Start Build 3.00
300.0	1.50	232.19	300.0	-0.4	-0.5	0.7	3.00	3.00	
400.0	4.50	232.19	399.8	-3.6	-4.7	5.9	3.00	3.00	
500.0	7.50	232.19	499.3	-10.0	-12.9	16.3	3.00	3.00	
600.0	10.50	232.19	598.0	-19.6	-25.3	31.9	3.00	3.00	
700.0	13.50	232.19	695.8	-32.4	-41.7	52.7	3.00	3.00	
800.0	16.50	232.19	792.4	-48.2	-62.1	78.5	3.00	3.00	
803.3	16.60	232.19	795.6	-48.8	-62.9	79.4	3.00	3.00	Start 2677.3 hold at 803.3 MD
900.0	16.60	232.19	888.3	-65.7	-84.7	107.0	0.00	0.00	
1,000.0	16.60	232.19	984.1	-83.2	-107.3	135.5	0.00	0.00	
1,100.0	16.60	232.19	1,079.9	-100.8	-129.8	164.0	0.00	0.00	
1,200.0	16.60	232.19	1,175.8	-118.3	-152.4	192.5	0.00	0.00	
1,300.0	16.60	232.19	1,271.6	-135.8	-175.0	221.0	0.00	0.00	
1,400.0	16.60	232.19	1,367.4	-153.3	-197.6	249.5	0.00	0.00	
1,500.0	16.60	232.19	1,463.3	-170.8	-220.1	278.0	0.00	0.00	
1,600.0	16.60	232.19	1,559.1	-188.3	-242.7	306.5	0.00	0.00	
1,700.0	16.60	232.19	1,654.9	-205.9	-265.3	335.0	0.00	0.00	
1,800.0	16.60	232.19	1,750.8	-223.4	-287.8	363.5	0.00	0.00	
1,900.0	16.60	232.19	1,846.6	-240.9	-310.4	392.0	0.00	0.00	
2,000.0	16.60	232.19	1,942.4	-258.4	-333.0	420.5	0.00	0.00	
2,100.0	16.60	232.19	2,038.2	-275.9	-355.5	449.0	0.00	0.00	
2,200.0	16.60	232.19	2,134.1	-293.4	-378.1	477.6	0.00	0.00	
2,300.0	16.60	232.19	2,229.9	-310.9	-400.7	506.1	0.00	0.00	
2,400.0	16.60	232.19	2,325.7	-328.5	-423.2	534.6	0.00	0.00	
2,500.0	16.60	232.19	2,421.6	-346.0	-445.8	563.1	0.00	0.00	
2,600.0	16.60	232.19	2,517.4	-363.5	-468.4	591.6	0.00	0.00	
2,700.0	16.60	232.19	2,613.2	-381.0	-491.0	620.1	0.00	0.00	
2,800.0	16.60	232.19	2,709.1	-398.5	-513.5	648.6	0.00	0.00	
2,900.0	16.60	232.19	2,804.9	-416.0	-536.1	677.1	0.00	0.00	
3,000.0	16.60	232.19	2,900.7	-433.6	-558.7	705.6	0.00	0.00	
3,100.0	16.60	232.19	2,996.6	-451.1	-581.2	734.1	0.00	0.00	
3,200.0	16.60	232.19	3,092.4	-468.6	-603.8	762.6	0.00	0.00	
3,300.0	16.60	232.19	3,188.2	-486.1	-626.4	791.1	0.00	0.00	
3,400.0	16.60	232.19	3,284.1	-503.6	-648.9	819.6	0.00	0.00	
3,480.6	16.60	232.19	3,361.3	-517.7	-667.1	842.6	0.00	0.00	Start DLS 3.00 TFO -113.52
3,493.4	16.45	230.94	3,373.6	-520.0	-670.0	846.2	3.00	-1.17	Start DLS 3.00 TFO -93.35
3,500.0	16.44	230.25	3,379.9	-521.2	-671.4	848.1	3.00	-0.16	
3,600.0	16.56	219.68	3,475.8	-541.2	-691.4	876.3	3.00	0.13	
3,601.4	16.57	219.54	3,477.1	-541.5	-691.7	876.7	3.00	0.39	Start 967.4 hold at 3601.4 MD
3,700.0	16.57	219.54	3,571.7	-563.2	-709.6	904.5	0.00	0.00	
3,800.0	16.57	219.54	3,667.5	-585.2	-727.7	932.7	0.00	0.00	
3,900.0	16.57	219.54	3,763.4	-607.2	-745.9	960.9	0.00	0.00	
3,974.7	16.57	219.54	3,835.0	-623.6	-759.5	981.9	0.00	0.00	OHIO_CREEK.MBL (SSTVD)
4,000.0	16.57	219.54	3,859.2	-629.2	-764.0	989.1	0.00	0.00	
4,100.0	16.57	219.54	3,955.0	-651.2	-782.2	1,017.2	0.00	0.00	
4,200.0	16.57	219.54	4,050.9	-673.2	-800.3	1,045.4	0.00	0.00	
4,275.2	16.57	219.54	4,123.0	-689.7	-814.0	1,066.6	0.00	0.00	WILLIAMS_FORK.MBL (SSTVD)
4,300.0	16.57	219.54	4,146.7	-695.2	-818.5	1,073.6	0.00	0.00	
4,400.0	16.57	219.54	4,242.6	-717.2	-836.7	1,101.8	0.00	0.00	

Planning Report

Database:	USA EDM 5000 Multi Users DB	Local Co-ordinate Reference:	Well CHEVRON 22B-17
Company:	Caerus Oil & Gas	TVD Reference:	30' KB @ 5613.0usft
Project:	Garfield County, CO (UTM 12N)	MD Reference:	30' KB @ 5613.0usft
Site:	S17-T6S-R96W (PC5A)	North Reference:	True
Well:	CHEVRON 22B-17	Survey Calculation Method:	Minimum Curvature
Wellbore:	OH		
Design:	PLAN #1		

Planned Survey									
Measured Depth (usft)	Inclination (°)	Azimuth (°)	Vertical Depth (usft)	+N/-S (usft)	+E/-W (usft)	Vertical Section (usft)	Dogleg Rate (°/100usft)	Build Rate (°/100u)	Comments / Formations
4,500.0	16.57	219.54	4,338.4	-739.1	-854.8	1,130.0	0.00	0.00	
4,568.7	16.57	219.54	4,404.3	-754.3	-867.3	1,149.3	0.00	0.00	Start Drop -3.00
4,600.0	15.63	219.54	4,434.4	-761.0	-872.8	1,157.9	3.00	-3.00	
4,700.0	12.63	219.54	4,531.3	-779.8	-888.4	1,182.0	3.00	-3.00	
4,800.0	9.63	219.54	4,629.4	-794.7	-900.6	1,201.1	3.00	-3.00	
4,900.0	6.63	219.54	4,728.4	-805.6	-909.6	1,215.1	3.00	-3.00	
5,000.0	3.63	219.54	4,828.0	-812.5	-915.3	1,223.9	3.00	-3.00	
5,100.0	0.63	219.54	4,927.9	-815.3	-917.7	1,227.6	3.00	-3.00	
5,121.1	0.00	0.00	4,949.0	-815.4	-917.8	1,227.7	3.00	-3.00	Start 2129.0 hold at 5121.1 MD
5,200.0	0.00	0.00	5,027.9	-815.4	-917.8	1,227.7	0.00	0.00	
5,221.1	0.00	0.00	5,049.0	-815.4	-917.8	1,227.7	0.00	0.00	TOP_GAS.MBL (SSTVD)
5,300.0	0.00	0.00	5,127.9	-815.4	-917.8	1,227.7	0.00	0.00	
5,400.0	0.00	0.00	5,227.9	-815.4	-917.8	1,227.7	0.00	0.00	
5,500.0	0.00	0.00	5,327.9	-815.4	-917.8	1,227.7	0.00	0.00	
5,600.0	0.00	0.00	5,427.9	-815.4	-917.8	1,227.7	0.00	0.00	
5,700.0	0.00	0.00	5,527.9	-815.4	-917.8	1,227.7	0.00	0.00	
5,800.0	0.00	0.00	5,627.9	-815.4	-917.8	1,227.7	0.00	0.00	
5,900.0	0.00	0.00	5,727.9	-815.4	-917.8	1,227.7	0.00	0.00	
6,000.0	0.00	0.00	5,827.9	-815.4	-917.8	1,227.7	0.00	0.00	
6,100.0	0.00	0.00	5,927.9	-815.4	-917.8	1,227.7	0.00	0.00	
6,200.0	0.00	0.00	6,027.9	-815.4	-917.8	1,227.7	0.00	0.00	
6,300.0	0.00	0.00	6,127.9	-815.4	-917.8	1,227.7	0.00	0.00	
6,400.0	0.00	0.00	6,227.9	-815.4	-917.8	1,227.7	0.00	0.00	
6,500.0	0.00	0.00	6,327.9	-815.4	-917.8	1,227.7	0.00	0.00	
6,600.0	0.00	0.00	6,427.9	-815.4	-917.8	1,227.7	0.00	0.00	
6,630.1	0.00	0.00	6,458.0	-815.4	-917.8	1,227.7	0.00	0.00	CAMEO.MBL (SSTVD)
6,700.0	0.00	0.00	6,527.9	-815.4	-917.8	1,227.7	0.00	0.00	
6,800.0	0.00	0.00	6,627.9	-815.4	-917.8	1,227.7	0.00	0.00	
6,900.0	0.00	0.00	6,727.9	-815.4	-917.8	1,227.7	0.00	0.00	
7,000.0	0.00	0.00	6,827.9	-815.4	-917.8	1,227.7	0.00	0.00	
7,100.0	0.00	0.00	6,927.9	-815.4	-917.8	1,227.7	0.00	0.00	
7,100.1	0.00	0.00	6,928.0	-815.4	-917.8	1,227.7	0.00	0.00	ROLLINS.MBL (SSTVD)
7,200.0	0.00	0.00	7,027.9	-815.4	-917.8	1,227.7	0.00	0.00	
7,250.1	0.00	0.00	7,078.0	-815.4	-917.8	1,227.7	0.00	0.00	TD at 7250.1

Targets									
Target Name	Dip Angle (°)	Dip Dir. (°)	TVD (usft)	+N/-S (usft)	+E/-W (usft)	Northing (usft)	Easting (usft)	Latitude	Longitude
CHEVRON 22B-17 PBH - hit/miss target - Shape	0.00	0.00	7,078.0	-815.4	-917.8	14,366,303.00	2,449,125.00	39.525904	-108.132321
- plan hits target center - Circle (radius 50.0)									
CHEVRON 22B-17 TGT - plan hits target center - Point	0.00	0.00	3,373.6	-520.0	-670.0	14,366,606.19	2,449,363.23	39.526715	-108.131443

Planning Report

Database:	USA EDM 5000 Multi Users DB	Local Co-ordinate Reference:	Well CHEVRON 22B-17
Company:	Caerus Oil & Gas	TVD Reference:	30' KB @ 5613.0usft
Project:	Garfield County, CO (UTM 12N)	MD Reference:	30' KB @ 5613.0usft
Site:	S17-T6S-R96W (PC5A)	North Reference:	True
Well:	CHEVRON 22B-17	Survey Calculation Method:	Minimum Curvature
Wellbore:	OH		
Design:	PLAN #1		

Formations					
Measured Depth (usft)	Vertical Depth (usft)	Name	Lithology	Dip (°)	Dip Direction (°)
3,974.7	3,835.0	OHIO_CREEK.MBL (SSTVD)		0.00	
4,275.2	4,123.0	WILLIAMS_FORK.MBL (SSTVD)		0.00	
5,221.1	5,049.0	TOP_GAS.MBL (SSTVD)		0.00	
6,630.1	6,458.0	CAMEO.MBL (SSTVD)		0.00	
7,100.1	6,928.0	ROLLINS.MBL (SSTVD)		0.00	

Plan Annotations					
Measured Depth (usft)	Vertical Depth (usft)	Local Coordinates			
		+N/-S (usft)	+E/-W (usft)	Comment	
250.0	250.0	0.0	0.0	Start Build 3.00	
803.3	795.6	-48.8	-62.9	Start 2677.3 hold at 803.3 MD	
3,480.6	3,361.3	-517.7	-667.1	Start DLS 3.00 TFO -113.52	
3,493.4	3,373.6	-520.0	-670.0	Start DLS 3.00 TFO -93.35	
3,601.4	3,477.1	-541.5	-691.7	Start 967.4 hold at 3601.4 MD	
4,568.7	4,404.3	-754.3	-867.3	Start Drop -3.00	
5,121.1	4,949.0	-815.4	-917.8	Start 2129.0 hold at 5121.1 MD	
7,250.1	7,078.0	-815.4	-917.8	TD at 7250.1	