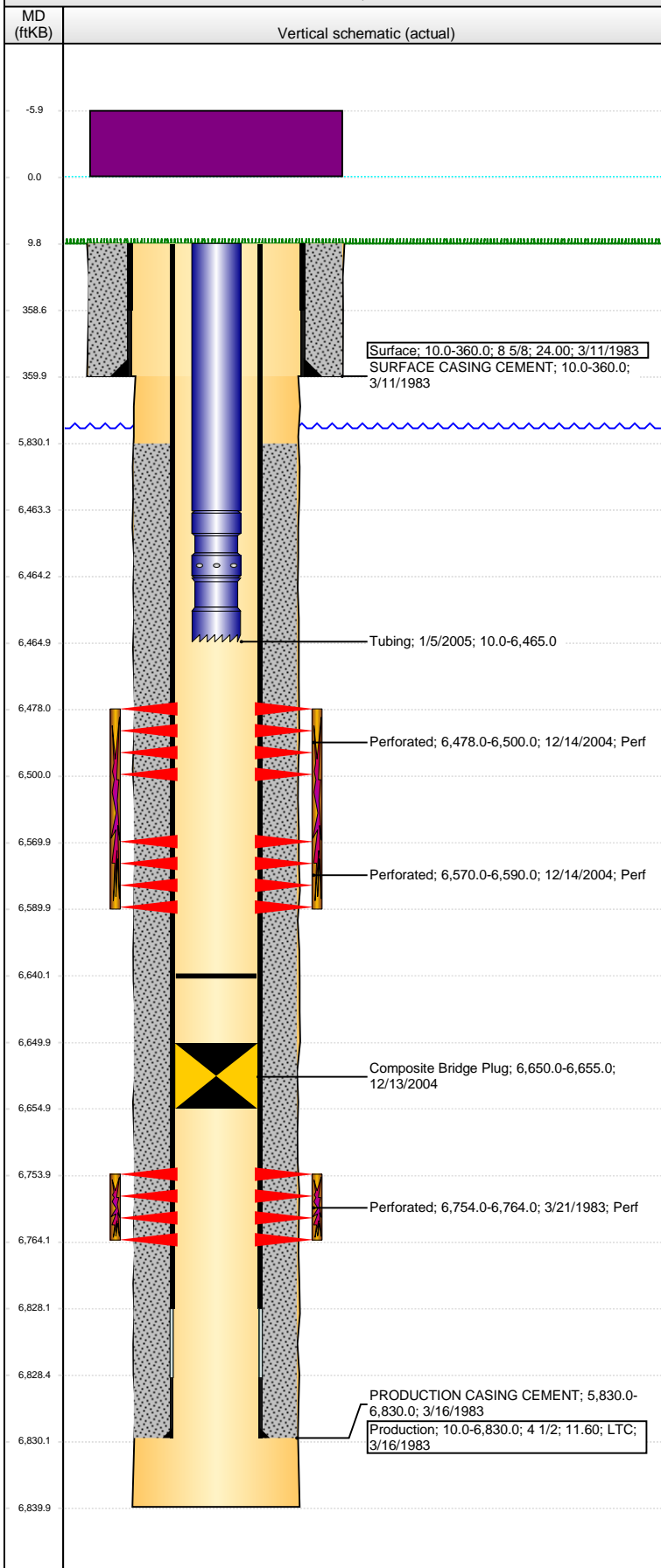


Well Name: LOLOFF 03

VERTICAL - ORIGINAL HOLE, 5/5/2016 12:06:51 PM



Well Header

API 05-123-11067	Business Unit DJ BASIN	District 15	Well Config VERTICAL
Original KB Elevation (ft) 4,646	KB - GL / MSL (ftKB) 10.00	Spud Date 3/11/1983	P & A Date

Comment

POOR/SKETCHY DATA

DISCREPANCY: DRL RPT/ST RPT TD @ 6830'; OPEN HOLE LOG/DRL RPT TD @ 6840'; PROD CSG LADNED @ 6830'

Directions To Well

Congressional Location

Quarter 1	Quarter 2	Quarter 3	Quarter 4	Section	Township	Twnshp N...	Range	Rng E/W Dir
		NE	NW	35	5	N	64	W

Bottom Hole Location

North-South Distance (ft)	From N or S Line	East-West Distance (ft)	From E or W Line

Plug Back Total Depths

Date	Depth (ftKB)	Method	Com
12/11/2004	6,814.0	TAG	TAG TO SET PLUG
12/13/2004	6,650.0	TAG	SET PLUG
1/4/2005	6,640.0	TAG	TAG TO LAND TUBING

Wellbore Sections

Section Des	Size (in)	Act Top, MD (ftKB)	Act Btm, MD (ftKB)
SURFACE	12 1/4	10.0	360.0
PRODUCTION	7 7/8	360.0	6,840.0

Zone Statuses

Zone Name	Status Date	Status	Fluid Type	Job	Prod Method
NIOBRARA	12/16/2004	PR		RECOMPLETI...	
CODELL	3/16/1983	PR		DRILLING/CO...	
CODELL	12/13/2004	TA		RECOMPLETI...	

Casing Strings

Surface, 360.0ftKB

Casing Description	Run Date	OD (in)	Wt/Len (l...)	Grade	Top, MD (ft...)	MD (ftKB)
Surface	3/11/1983	8 5/8	24.00		10.0	360.0

Production, 6,830.0ftKB

Casing Description	Run Date	OD (in)	Wt/Len (l...)	Grade	Top, MD (ft...)	MD (ftKB)
Production	3/16/1983	4 1/2	11.60	LTC	10.0	6,830.0

Cement

Description	Top Depth (ftKB)	Bottom Depth (ftKB)
SURFACE CASING CEMENT	10.0	360.0
PRODUCTION CASING CEMENT	5,830.0	6,830.0

Tubing Strings

Tubing Description	Run Date	String...	ID (in)	Wt (lb/ft)	Grade	Len (ft)	Set De...
Tubing	1/5/2005	2 3/8	1.995	4.70	J-55	6,455.00	

Tubing Components

Item Des	OD (in)	Wt (lb/ft)	Grade	Jts	Len (ft)	Btm (ftKB)	Btm (TVD) (ftKB)
EUE 8rd Tubing	2 3/8	4.70	J-55	199	6,453.15	6,463.1	
Seal Nipple	2 3/8			1	1.10	6,464.2	
Notched collar	2 3/8			1	0.75	6,465.0	

Perforation Data

Zone	Bnch/St g	Entered Shot Total	Top (ftKB)	Btm (ftKB)	Date
NIOBRARA, ORIGINAL HOLE	B	132	6,478.00	6,500.00	12/14/2004
NIOBRARA, ORIGINAL HOLE	B	120	6,570.00	6,590.00	12/14/2004
CODELL, ORIGINAL HOLE		30	6,754.00	6,764.00	3/21/1983

Stimulations & Treatments

Date	Zone	Primary Job Type
3/23/1983	CODELL, ORIGINAL HOLE	DRILLING/COMPLETION - ORIGINAL
Technical Result	Tech Result Details	Tech Result Note
Comment		

Well Name: LOLOFF 03

VERTICAL - ORIGINAL HOLE, 5/5/2016 12:06:53 PM

Stimulations & Treatments

Date 12/15/2004	Zone NIOBRARA, ORIGINAL HOLE	Primary Job Type RECOMPLETION
Technical Result	Tech Result Details	Tech Result Note
Comment		

Other In Hole

Run Date	Des	OD (in)	Top (ftKB)	Btm (ftKB)
12/13/2004	Composite Bridge Plug	4	6,650.0	6,655.0

Logs

Date	Type	Top, MD (ftKB)	Btm, MD (ftKB)
3/17/1983	COMPENSATED DENSITY	4,180.0	6,836.0
3/17/1983	INDUCTION	356.0	6,834.0
12/13/2004	CBL/CCL/GR	5,675.0	6,807.0

