

State of Colorado
Oil and Gas Conservation Commission

1120 Lincoln Street, Suite 801, Denver, Colorado 80203 (303)-894-2100 Fax: (303)-894-2109

FOR OGCC USE ONLY

Document Number: _____

Date Received: _____

MECHANICAL INTEGRITY TEST

1. Duration of the pressure test must be a minimum of 15 minutes.
2. An original pressure chart must accompany this report if this test was not witnessed by a OGCC representative. Injection wells tests must be witnessed by an OGCC representative.
3. For production wells, test pressures must be at a minimum of 300 psig.
4. New injection wells must be tested to maximum requested injection pressure.
5. For injection wells, test pressures must be at least 300 psig or average injection pressure, whichever is greater.
6. A minimum 300 psi differential pressure must be maintained between the tubing and tubing/casing annulus pressure.
7. Do not use this form if submitting under provisions of Rule 326.a.(1) B. or C.
8. OGCC notification must be provided 10 days prior to the test via Form 42.
9. Packers or bridge plugs, etc., must be set within 100 feet of the perforated interval to be considered a valid test.

Complete the
Attachment Checklist

Oper OGCC

Pressure Chart	<input checked="" type="checkbox"/>	
Cement Bond Log		
Tracer Survey		
Temperature Survey		
Inspection Number	<input checked="" type="checkbox"/>	

OGCC Operator Number: 16700

Name of Operator: Chevron U.S.A. Inc

Address: 100 Chevron Road

City: Rangely State: CO Zip: 81648

API Number: 05-103-05763 OGCC Facility ID Number: 47443 / Rangely Field 72370

Well/Facility Name: A.C. McLAUGHLIN Well/Facility Number: 24

Location QtrQtr: NWNW Section: 23 Township: 2N Range: 103W Meridian: 6th

Contact Name and Telephone

Diane L Peterson

No: (970) 675-3842Email: dlpe@chevron.com☐ SHUT-IN PRODUCTION WELL☒ INJECTION WELLLast MIT Date: 04/25/2012

Test Type:

☐ Test to Maintain SI/TA status☒ 5- year UIC☐ Reset Packer☐ Verification of Repairs☐ Annual UIC TestDescribe Repairs or Other Well Activities: Corrected tubing depth.

Wellbore Data at Time of Test

Injection/Producing Zone(s)

Perforated Interval:

Open Hole Interval:

Weber**6224-6654'**

Casing Test

Use when perforations or open hole is isolated by bridge plug or cement plug; use if cased-hole only with plug back total depth.

Bridge Plug or Cement Plug Depth

Tubing Casing/Annulus Test

Tubing Size:

Tubing Depth:

Top Packer Depth:

Multiple Packers?

2 7/8'**6636.6'****5913.17**☒ Yes☐ No

Test Data

Test Date

Well Status During Test

Casing Pressure Before Test

Initial Tubing Pressure

Final Tubing Pressure

Casing Pressure Start Test

Casing Pressure - 5 Min.

Casing Pressure - 10 Min.

Casing Pressure Final Test

Pressure Loss or Gain During Test

Test Witnessed by State Representative?

☒ Yes☐ No

OGCC Field Representative (Print Name):

Chuck Browning

680400489

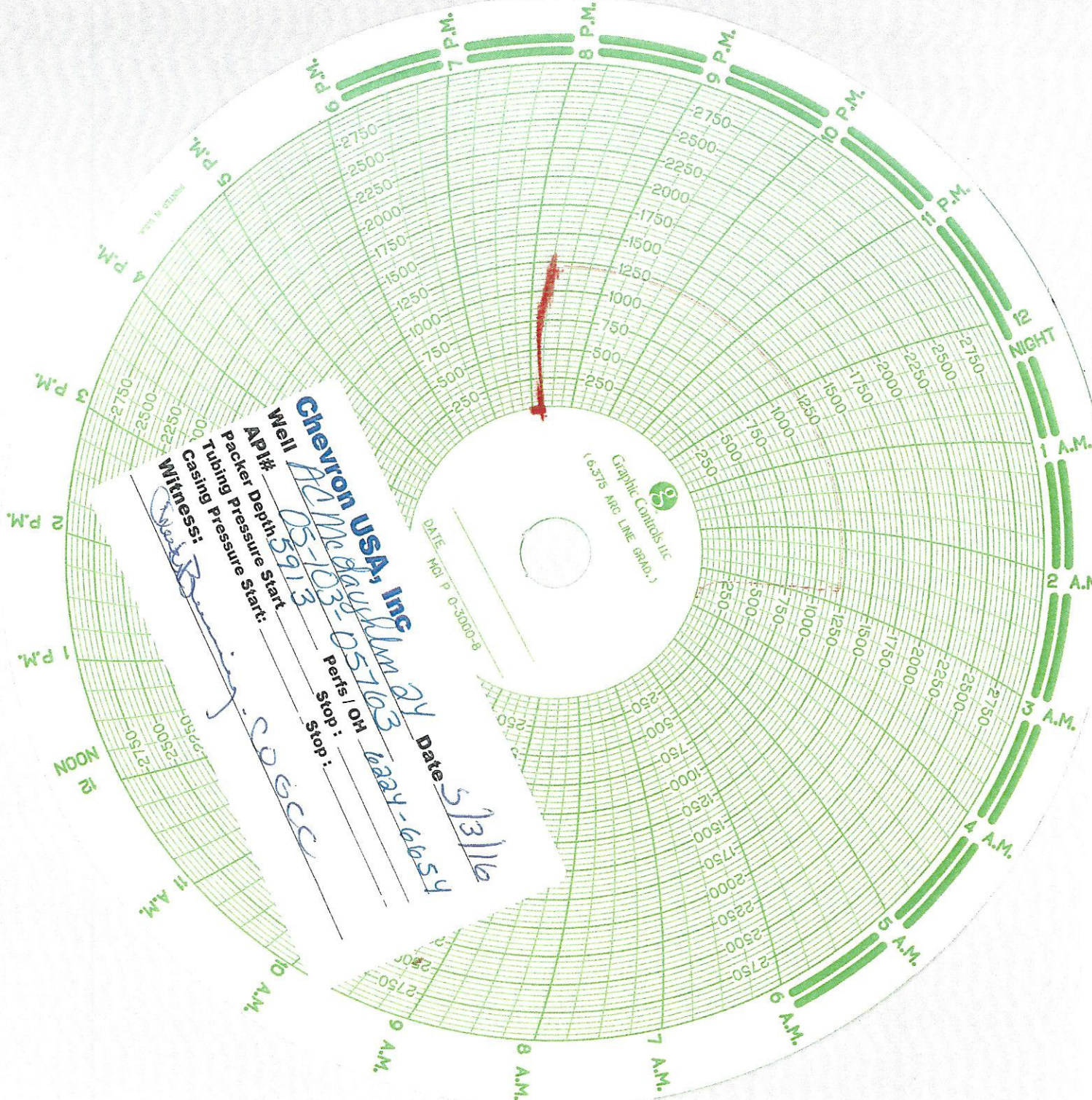
I hereby certify that the statements made in this form are, to the best of my knowledge, true, correct, and complete.

Print Name: Diane L PetersonForm 42# 401025338

Field Inspection #

Signed: Diane L PetersonTitle: Permitting SpecialistDate: 5/3/16OGCC Approval: Chuck BrowningTitle: NW InspDate: 5/3/16

Conditions of Approval, if any:



Graphic Controls LLC
(6.375 ARC LINE GRAD.)

DATE: 5/31/16
MO: 5 P: 0-3000-8

Chevron USA, Inc
Well: ALM-103-05763 Date: 5/31/16
API#: 05-103-05763
Packer Depth: 2000
Tubing Pressure Start: 2000
Casing Pressure Start: 2000
Witness: [Signature]
Perfs / OH: 24
Stop: Stop