

LEASE & WELL NO. Evans Federal 12-21
 FIELD NAME Sandwash
 LOCATION Sec 21, T11N-R93W

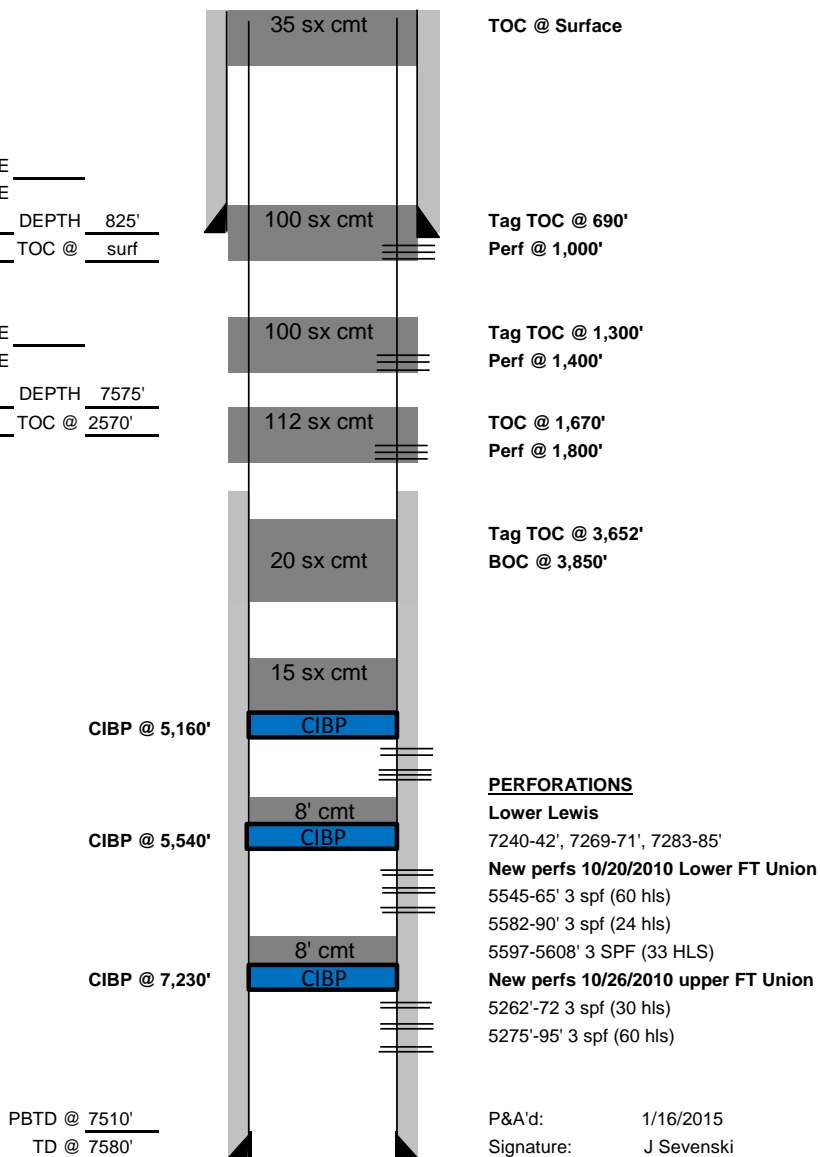
SCHEMATIC REVISION DATE: 1/16/2015
 COUNTY & STATE Moffat, Colorado
 API NO. 05-081-07195

K.B. ELEV. 6642
 D.F. ELEV. 6639'
 GROUND LEVEL 6627
 CORR. 15'

SURFACE CASING HOLE _____
 SIZE _____
 SIZE 9 5/8" WEIGHT 36# DEPTH 825'
 GRADE J-55 SX. CMT. 357 sx TOC @ surf

PRODUCTION CASING HOLE _____
 SIZE _____
 SIZE 5 1/2" WEIGHT 17# DEPTH 7575'
 GRADE L-80 SX. CMT. 394 sx TOC @ 2570'

Formation Tops
 Ft. Union 3757
 Lance 5,611
 Fox Hills 6,352
 Lewis 6,447



P&A'd: 1/16/2015
 Signature: J Sevenski

PREPARED BY: RL

PREPARED BY: RL

PREPARED BY: RL

PREPARED BY: RL

PREPARED BY: RL



Continental Industries Field Services, LLC
2411 N. Oil Drive
P.O. Box 656
Casper, WY 82602

307-473-1581 Phone
307-234-1035 Fax

www.wellplugging.com

DAILY WORK TICKET

Company: Merit Energy Corp.

Date: 1/7/2015

Rig: 6

Address:

Lease: Sandwash

Well: Evans Federal 12-21

Contract #

County: Moffat

PLUGGING / WORK DETAIL:

Conduct safety meeting, TIH and set CIBP @ 5160', RU cementers, pressure tested tubing to 1000', tubing good. Sting out, load hole with fresh water, SIW, pressure tested casing to 500psi for 15min, casing held, open well, spotted 15sxs cement on top of CIBP, L/D tubing to 3850', mixed and pumped 20sxs cement stabilizer plug. L/D tubing to 1800', stood back remaining tubing in derrick. SIW, SDFN. Mobilize pump truck to the Brady Field.

ITEM	HOURS OR UNITS	PRICE PER HOUR	TOTAL
------	----------------------	----------------------	-------

BID PRICE			\$ -
-----------	--	--	------

ADDT'L TIME & MATR'L ITEMS:			
			\$ -
			\$ -
			\$ -
			\$ -
			\$ -
			\$ -
			\$ -
			\$ -
			\$ -
			\$ -
SUB TOTAL:		\$	-
SALES TAX:		\$	-
TOTAL:		\$	-

EMPLOYEE'S NAME	JOB	HOURS
-----------------	-----	-------

LeMay	Supervisor	
Devoe	Operator	
Cook	Derrick	
McComsey	Floor	
LeMay	CMTR	
VanCoillie	BULK	
J.Sevenski	Co.Rep	
R.Wallis	BLM rep	

CEMENT DETAIL

Cement pumped was class G Neat with slurry weight of 15.8 ppg, 1.15 cu-ft/sk yield. Mix water was 4.96 gal/sk. Compressive strength 24 hrs/4000 psi

PREPARED BY: RL



Continental Industries Field Services, LLC
 2411 N. Oil Drive
 P.O. Box 656
 Casper, WY 82602

307-473-1581 Phone
 307-234-1035 Fax

www.wellplugging.com

DAILY WORK TICKET

Company: Merit Energy Corp.

Address:

Contract #

Date: 1/8/2015

Rig:

Lease: Brady South Unit

Well: Brady Deep 1W

County: Sweetwater WY.

PLUGGING / WORK DETAIL:

Standby

ITEM	HOURS OR UNITS	PRICE PER HOUR	TOTAL
------	----------------------	----------------------	-------

BID PRICE		\$	-
-----------	--	----	---

ADD'T'L TIME & MATR'L ITEMS:			
Pump Truck		\$	-
Cement		\$	-
Travel CMT Truck		\$	-
Travel CMT PU		\$	-
RIG Standby		\$	-
Subsistence		\$	-
		\$	-
		\$	-
SUB TOTAL:		\$	-
SALES TAX:		\$	-
TOTAL:		\$	-

EMPLOYEE'S NAME	JOB	HOURS
-----------------	-----	-------

LeMay	Supervisor	
Devoe	Operator	
Cook	Derrick	
McComsey	Floor	
LeMay	CMTR	
VanCoillie	BULK	
J.Sevenski	Co.Rep	
R.Canterbury	State Rep	

CEMENT DETAIL

Cement pumped was class G Neat with slurry weight of 15.8 ppg, 1.15 cu-ft/sk yield. Mix water was 4.96 gal/sk. Compressive strength 24 hrs/4000 psi

PREPARED BY: RL

PREPARED BY: RL

PREPARED BY: RL

PREPARED BY: RL



Continental Industries Field Services, LLC
2411 N. Oil Drive
P.O. Box 656
Casper, WY 82602

307-473-1581 Phone
307-234-1035 Fax

www.wellplugging.com

DAILY WORK TICKET

Company: Merit Energy Corp.

Date: 1/14/2015

Rig: 6

Address:

Lease: Sandwash

Well: Evans Federal 12-21

Contract #

County: Moffat

PLUGGING / WORK DETAIL:

Conduct safety meeting, TIH and tag TOC @ 690', consult with BLM rep on location, L/D tubing, RDSU, ND BOP, and dig out and cut off wellhead 3'bgl, SDFN. Mobilize pump truck to Brady Field

ITEM	HOURS OR UNITS	PRICE PER HOUR	TOTAL
------	----------------------	----------------------	-------

BID PRICE			\$ -
-----------	--	--	------

ADDT'L TIME & MATR'L ITEMS:			
			\$ -
			\$ -
			\$ -
			\$ -
			\$ -
			\$ -
			\$ -
			\$ -
			\$ -
SUB TOTAL:		\$	-
SALES TAX:		\$	-
TOTAL:		\$	-

EMPLOYEE'S NAME	JOB	HOURS
-----------------	-----	-------

LeMay	Supervisor	
Devoe	Operator	
Cook	Derrick	
McComsey	Floor	
LeMay	CMTR	
VanCoillie	BULK	
J.Sevenski	Co.Rep	
R.Wallis	BLM rep	

CEMENT DETAIL

Cement pumped was class G Neat with slurry weight of 15.8 ppg, 1.15 cu-ft/sk yield. Mix water was 4.96 gal/sk. Compressive strength 24 hrs/4000 psi

PREPARED BY: RL

PREPARED BY: RL