



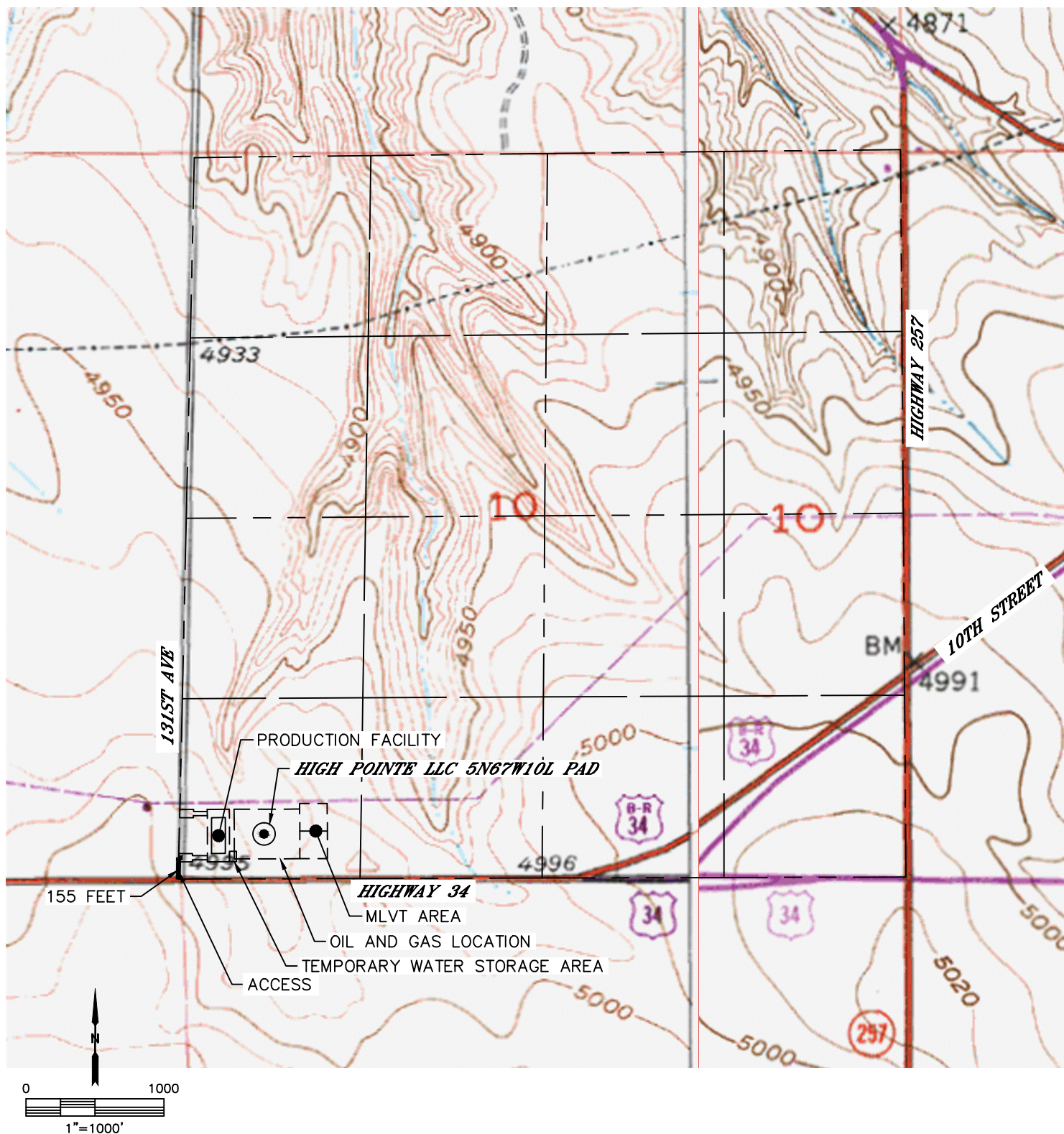
Lat40°, Inc. 6250 W. 10th Street, Unit 2, Greeley, CO 970-515-5294

ACCESS ROAD MAP

HIGH POINTE LLC 5N67W10L PAD

SECTION: 10
TOWNSHIP: 5N
RANGE: 67W
6TH. P.M.
WELD COUNTY, CO

DRIVING DIRECTIONS TO HIGH POINTE LLC 5N67W10LG PAD
FROM THE INTERSECTION OF HIGHWAY 34 AND 131ST AVENUE, GO NORTH ON 131ST AVENUE 155 FEET TO A PROPOSED ACCESS TO THE EAST. TURN EAST INTO PROPOSED DRILL PAD LOCATION.





Lat40°, Inc. 6250 W. 10th Street, Unit 2, Greeley, CO 970-515-5294

ACCESS ROAD MAP

HIGH POINTE LLC 5N67W10L PAD

SECTION: 10
TOWNSHIP: 5N
RANGE: 67W
6TH. P.M.
WELD COUNTY, CO

