

T1N, R67W

MATCH LINE  
SEE SHEET 2

WELL BORE CONTINUES  
INTO SECTION 15

NW. COR.  
SEC. 22, T1N, R67W  
FOUND 3 1/4" ALUM. CAP  
L.S. NO. 13155

N. 1/4 COR.  
SEC. 22, T1N, R67W  
FOUND 3 1/4" ALUM. CAP  
ILLEGIBLE

NE. COR.  
SEC. 22, T1N, R67W  
FOUND 2 1/2" ALUM. CAP  
ILLEGIBLE

N 01°05'14" W 2638.62' (M)

S 89°24'09" W 2662.70' (M)

S 89°24'00" W 2662.76' (M)

N 00°26'14" W 2636.81' (M)

N 00°40'43" W  
2637.61' (C)

WAGNER 27N-10HZ  
SURFACE LOCATION

22

W. 1/4 COR.  
SEC. 22, T1N, R67W  
FOUND 3 1/4" ALUM. CAP  
L.S. NO. 6973

S 89°22'57" W  
2643.88' (C)

S 89°22'57" W  
2651.65' (C)

E. 1/4 COR.  
SEC. 22, T1N, R67W  
FOUND 2 1/2" ALUM. CAP  
ILLEGIBLE

N 00°45'14" W 2628.97' (M)

N 00°40'43" W  
2632.95' (C)

SURFACE LOCATION: NAD 83  
GROUND ELEVATION= 4972.4'  
LATITUDE= 40.039095°  
LONGITUDE= -104.872738°  
HEEL LOCATION: NAD 83  
LATITUDE= 40.039159°  
LONGITUDE= -104.871792°  
BOTTOM HOLE LOCATION: NAD 83  
LATITUDE= 40.060475°  
LONGITUDE= -104.871396°  
HEEL LOCATION: NAD 83  
LATITUDE= 40.0337710°  
LONGITUDE= -104.5217.026°

N 00°26'40" W 2637.08' (M)

SW. COR.  
SEC. 22, T1N, R67W  
FOUND 3 1/4" ALUM. CAP  
L.S. NO. 13155

S 89°28'08" W 2640.44' (M)

S. 1/4 COR.  
SEC. 22, T1N, R67W  
FOUND 3 1/4" ALUM. CAP  
L.S. NO. 13258

S 89°28'19" W 2640.86' (M)

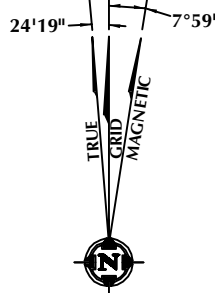
SE. COR.  
SEC. 22, T1N, R67W  
FOUND 3 1/4" ALUM. CAP  
L.S. NO. 13155

#### CERTIFICATE OF SURVEYOR:

THIS IS TO CERTIFY THAT THE ABOVE PLAT WAS PREPARED FROM FIELD NOTES OF ACTUAL SURVEY MADE BY ME OR UNDER MY SUPERVISION AND THAT THE SAME ARE TRUE AND CORRECT TO THE BEST OF MY KNOWLEDGE AND BELIEF. THIS CERTIFICATE DOES NOT REPRESENT A LAND SURVEY PLAT OR IMPROVEMENT SURVEY PLAT AS DEFINED BY C.R.S. 38-51-302 AND CANNOT BE RELIED UPON TO DETERMINE OWNERSHIP.

*John R. Slaugh*  
JOHN R. SLAUGH  
PROFESSIONAL LAND SURVEYOR  
COLORADO REGISTRATION NUMBER 38230

NOTICE:  
ACCORDING TO COLORADO STATE LAW YOU MUST COMMENCE ANY LEGAL ACTION BASED UPON ANY DEFECT IN THIS SURVEY WITHIN THREE YEARS AFTER YOU FIRST DISCOVER SUCH DEFECT. IN NO EVENT MAY ANY ACTION BASED UPON ANY DEFECT IN THIS SURVEY BE COMMENCED MORE THAN TEN YEARS FROM THE DATE ON THE CERTIFICATION SHOWN HEREON.



NOTE:  
MAGNETIC NORTH IS CURRENT AS OF 1/22/2016.  
MAGNETIC NORTH CHANGES WEST 0°06' PER YEAR.

#### NOTES:

- ▲ INDICATES SECTION CORNER
- INDICATES CALCULATED CORNER
- ELEVATION BASED ON NAVD88 (GEOID12B)
- BASIS OF BEARING DERIVED FROM COLORADO COORDINATE SYSTEM OF 1983 NORTH ZONE.
- ALL MEASURED DISTANCES ARE GRID.  
COMBINED SCALE FACTOR: .99972937
- OPERATOR: ROB WILSON / PDOP = 1.9
- SEE ADDENDUM TO WELL LOCATION CERTIFICATE FOR EXISTING IMPROVEMENTS WITHIN 500' OF THE WELL PAD.
- WELL FOOTAGES ARE MEASURED AT RIGHT ANGLES TO THE SECTION LINES.
- THE BOTTOM OF HOLE BEARS N00°24'40"E 7766' FROM THE HEEL LOCATION.

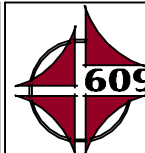


SCALE: 1" = 1000'

#### WELL PAD - WAGNER 2C-10HZ

WAGNER 27N-10HZ  
WELL LOCATION CERTIFICATE  
1722' FNL & 1529' FEL SWNE (SURFACE)  
1700' FNL & 1264' FEL SENE (HEEL)  
LOCATED IN SECTION 22  
800' FSL & 1132' FEL SESE (BOTTOM)  
LOCATED IN SECTION 10  
T1N, R67W, 6TH P.M.  
WELD COUNTY, COLORADO

Kerr-McGee Oil &  
Gas Onshore L.P.  
1099 18th Street  
Denver, Colorado 80202



#### CONSULTING, LLC

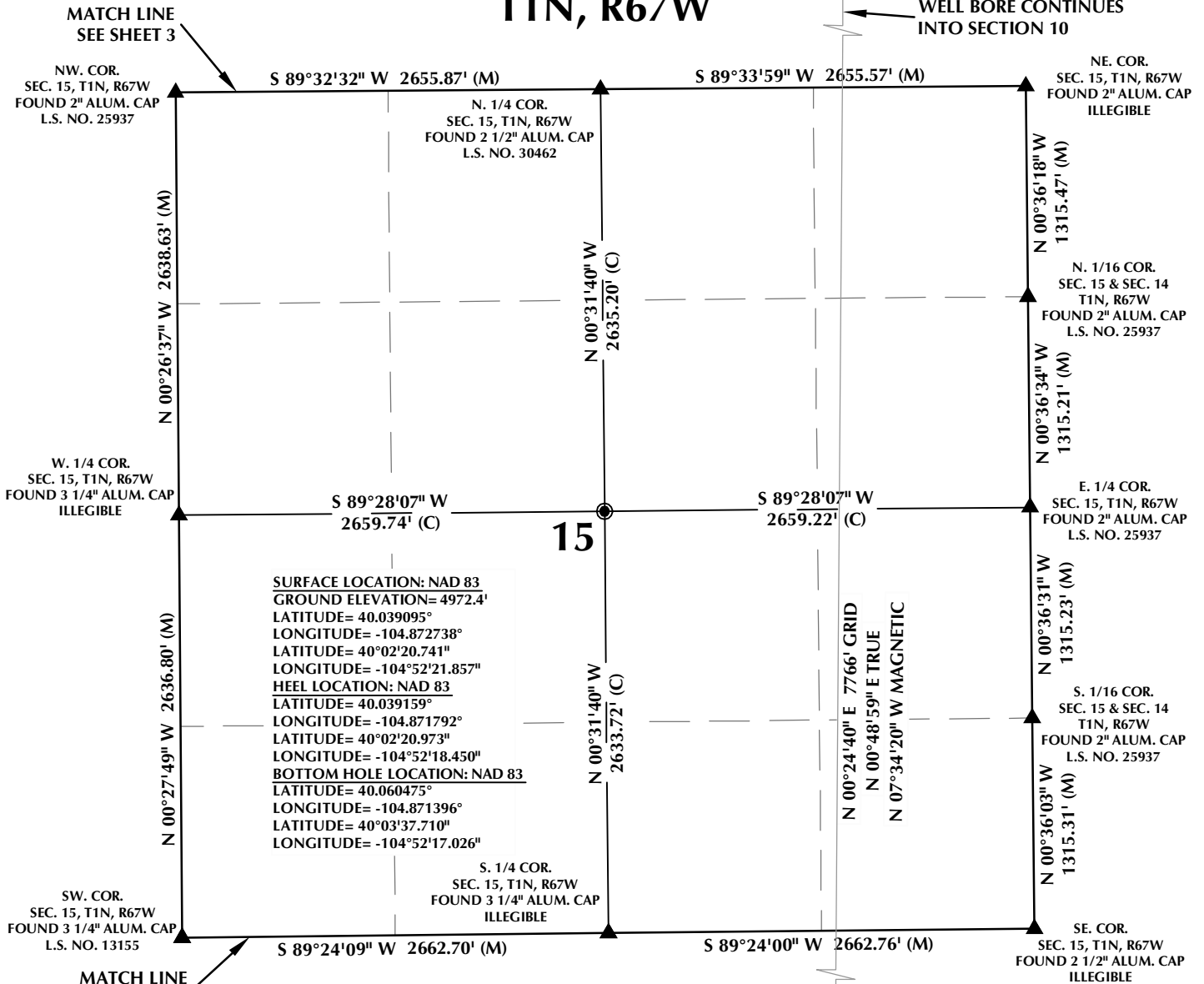
SHERIDAN OFFICE  
1095 Saberton Avenue  
Sheridan, Wyoming 82801  
Phone 307-674-0609

LOVELAND OFFICE  
1635 Foxtrail Drive, Suite 204  
Loveland, Colorado 80538  
Phone 970-776-4331

DRAFTED BY:	LMO	CHECKED BY:	JRS	SHEET NO:
DATE DRAFTED:	2/8/16	DATE SURVEYED:	9/14/15	1
REVISED:	3/30/16	FILE NAME:	15-60	1 OF 3

# T1N, R67W

WELL BORE CONTINUES  
INTO SECTION 10

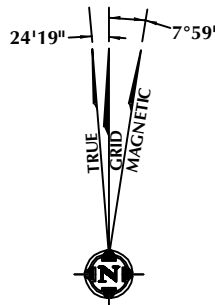


## CERTIFICATE OF SURVEYOR:

THIS IS TO CERTIFY THAT THE ABOVE PLAT WAS PREPARED FROM FIELD NOTES OF ACTUAL SURVEY MADE BY ME OR UNDER MY SUPERVISION AND THAT THE SAME ARE TRUE AND CORRECT TO THE BEST OF MY KNOWLEDGE AND BELIEF. THIS CERTIFICATE DOES NOT REPRESENT A LAND SURVEY PLAT OR IMPROVEMENT SURVEY PLAT AS DEFINED BY C.R.S. 38-51-302 AND CANNOT BE RELIED UPON TO DETERMINE OWNERSHIP.

*John R. Slough*  
 JOHN R. SLOUGH  
 PROFESSIONAL LAND SURVEYOR  
 COLORADO REGISTRATION NUMBER 38230

**NOTICE:**  
 ACCORDING TO COLORADO STATE LAW YOU MUST COMMENCE ANY LEGAL ACTION BASED UPON ANY DEFECT IN THIS SURVEY WITHIN THREE YEARS AFTER YOU FIRST DISCOVER SUCH DEFECT. IN NO EVENT MAY ANY ACTION BASED UPON ANY DEFECT IN THIS SURVEY BE COMMENCED MORE THAN TEN YEARS FROM THE DATE ON THE CERTIFICATION SHOWN HEREON.



**NOTE:**  
 MAGNETIC NORTH IS CURRENT AS OF 1/22/2016.  
 MAGNETIC NORTH CHANGES WEST 0°06' PER YEAR.

## WELL PAD - WAGNER 2C-10HZ

**WAGNER 27N-10HZ**  
**WELL LOCATION CERTIFICATE**  
 1722' FNL & 1529' FEL SWNE (SURFACE)  
 1700' FNL & 1264' FEL SENE (HEEL)  
 LOCATED IN SECTION 22  
 800' FSL & 1132' FEL SESE (BOTTOM)  
 LOCATED IN SECTION 10  
 T1N, R67W, 6TH P.M.  
 WELD COUNTY, COLORADO

**Kerr-McGee Oil &  
 Gas Onshore L.P.**  
 1099 18th Street  
 Denver, Colorado 80202



## CONSULTING, LLC

**SHERIDAN OFFICE**  
 1095 Saberton Avenue  
 Sheridan, Wyoming 82801  
 Phone 307-674-0609

**LOVELAND OFFICE**  
 1635 Foxtrail Drive, Suite 204  
 Loveland, Colorado 80538  
 Phone 970-776-4331

DRAFTED BY:	LMO	CHECKED BY:	JRS	SHEET NO:
DATE DRAFTED:	2/8/16	DATE SURVEYED:	9/14/15	2
REVISED:	3/30/16	FILE NAME:	15-60	2 OF 3

# T1N, R67W

NW. COR.  
SEC. 10, T1N, R67W  
FOUND 3 1/4" ALUM. CAP  
L.S. NO. 38285

S 89°33'37" W  
1322.65' (M)

S 89°33'29" W  
1322.75' (M)

S 89°33'38" W 2645.71' (M)

NE. COR.  
SEC. 10, T1N, R67W  
FOUND 2" ALUM. CAP  
L.S. NO. 25937

W. 1/16 COR.  
SEC. 10 & SEC. 3  
T1N, R67W  
FOUND 2" ALUM. CAP  
L.S. NO. 25937

N. 1/4 COR.  
SEC. 10, T1N, R67W  
FOUND 2" ALUM. CAP  
L.S. NO. 25937

SURFACE LOCATION: NAD 83  
GROUND ELEVATION= 4972.4'  
LATITUDE= 40.039095°  
LONGITUDE= -104.872738°  
LATITUDE= 40°02'20.741"  
LONGITUDE= -104°52'21.857"  
HEEL LOCATION: NAD 83  
LATITUDE= 40.039159°  
LONGITUDE= -104.871792°  
LATITUDE= 40°02'20.973"  
LONGITUDE= -104°52'18.450"  
BOTTOM HOLE LOCATION: NAD 83  
LATITUDE= 40.060475°  
LONGITUDE= -104.871396°  
LATITUDE= 40°03'37.710"  
LONGITUDE= -104°52'17.026"

W. 1/4 COR.  
SEC. 10, T1N, R67W  
FOUND 3 1/4" ALUM. CAP  
L.S. NO. 38285

CENTER W. 1/16 COR.  
SEC. 10, T1N, R67W  
FOUND 2" ALUM. CAP  
L.S. NO. 25937

CENTER COR.  
SEC. 10, T1N, R67W  
FOUND 2" ALUM. CAP  
L.S. NO. 25937

10

S 89°32'55" W  
1325.45' (M)

S 89°33'52" W  
1325.23' (M)

S 89°33'33" W  
2650.90' (M)

E. 1/4 COR.  
SEC. 10, T1N, R67W  
FOUND 2" ALUM. CAP  
L.S. NO. 25937

N 00°19'39" W 2642.78' (M)  
N 00°20'23" W 2642.97' (M)

N 00°26'32" W 2642.65' (M)  
N 00°27'08" W 2642.31' (M)

N 00°33'17" W 2642.59' (M)  
N 00°33'13" W 2642.65' (M)

SW. COR.  
SEC. 10, T1N, R67W  
FOUND 2" ALUM. CAP  
L.S. NO. 25937

S. 1/4 COR.  
SEC. 10, T1N, R67W  
FOUND 2 1/2" ALUM. CAP  
L.S. NO. 30462

SE. COR.  
SEC. 10, T1N, R67W  
FOUND 2" ALUM. CAP  
ILLEGIBLE

S 89°32'32" W 2655.87' (M)

S 89°33'59" W 2655.57' (M)

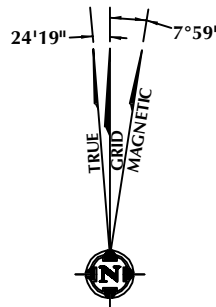
MATCH LINE  
SEE SHEET 2

## CERTIFICATE OF SURVEYOR:

THIS IS TO CERTIFY THAT THE ABOVE PLAT WAS PREPARED FROM FIELD NOTES OF ACTUAL SURVEY MADE BY ME OR UNDER MY SUPERVISION AND THAT THE SAME ARE TRUE AND CORRECT TO THE BEST OF MY KNOWLEDGE AND BELIEF. THIS CERTIFICATE DOES NOT REPRESENT A LAND SURVEY PLAT OR IMPROVEMENT SURVEY PLAT AS DEFINED BY C.R.S. 38-51-302 AND CANNOT BE RELIED UPON TO DETERMINE OWNERSHIP.

*John R. Slough*  
JOHN R. SLOUGH  
PROFESSIONAL LAND SURVEYOR  
COLORADO REGISTRATION NUMBER 38230

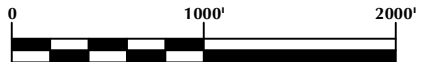
NOTICE:  
ACCORDING TO COLORADO STATE LAW YOU MUST COMMENCE ANY LEGAL ACTION BASED UPON ANY DEFECT IN THIS SURVEY WITHIN THREE YEARS AFTER YOU FIRST DISCOVER SUCH DEFECT. IN NO EVENT MAY ANY ACTION BASED UPON ANY DEFECT IN THIS SURVEY BE COMMENCED MORE THAN TEN YEARS FROM THE DATE ON THE CERTIFICATION SHOWN HEREON.



NOTE:  
MAGNETIC NORTH IS CURRENT AS OF 1/22/2016.  
MAGNETIC NORTH CHANGES WEST 0°06' PER YEAR.

## NOTES:

- ▲ INDICATES SECTION CORNER
- INDICATES CALCULATED CORNER
- ELEVATION BASED ON NAVD88 (GEOID12B)
- BASIS OF BEARING DERIVED FROM COLORADO COORDINATE SYSTEM OF 1983 NORTH ZONE.
- ALL MEASURED DISTANCES ARE GRID.  
COMBINED SCALE FACTOR: .99972937
- OPERATOR: ROB WILSON / PDOP = 1.9
- SEE ADDENDUM TO WELL LOCATION CERTIFICATE FOR EXISTING IMPROVEMENTS WITHIN 500' OF THE WELL PAD.
- WELL FOOTAGES ARE MEASURED AT RIGHT ANGLES TO THE SECTION LINES.
- THE BOTTOM OF HOLE BEARS N00°24'40"E 7766' FROM THE HEEL LOCATION.



SCALE: 1" = 1000'

## WELL PAD - WAGNER 2C-10HZ

WAGNER 27N-10HZ  
WELL LOCATION CERTIFICATE  
1722' FNL & 1529' FEL SWNE (SURFACE)  
1700' FNL & 1264' FEL SENE (HEEL)  
LOCATED IN SECTION 22  
800' FSL & 1132' FEL SESE (BOTTOM)  
LOCATED IN SECTION 10  
T1N, R67W, 6TH P.M.  
WELD COUNTY, COLORADO

Kerr-McGee Oil &  
Gas Onshore L.P.  
1099 18th Street  
Denver, Colorado 80202



## CONSULTING, LLC

SHERIDAN OFFICE  
1095 Saberton Avenue  
Sheridan, Wyoming 82801  
Phone 307-674-0609

LOVELAND OFFICE  
1635 Foxtrail Drive, Suite 204  
Loveland, Colorado 80538  
Phone 970-776-4331

DRAFTED BY:	LMO	CHECKED BY:	JRS	SHEET NO:
DATE DRAFTED:	2/8/16	DATE SURVEYED:	9/14/15	3
REVISED:	3/30/16	FILE NAME:	15-60	3 OF 3