

T1N, R67W

MATCH LINE
SEE SHEET 2

WELL BORE CONTINUES
INTO SECTION 15

NW. COR.
SEC. 22, T1N, R67W
FOUND 3 1/4" ALUM. CAP
L.S. NO. 13155

N. 1/4 COR.
SEC. 22, T1N, R67W
FOUND 3 1/4" ALUM. CAP
ILLEGIBLE

NE. COR.
SEC. 22, T1N, R67W
FOUND 2 1/2" ALUM. CAP
ILLEGIBLE

N 01°05'14" W 2638.62' (M)

S 89°24'09" W 2662.70' (M)

S 89°24'00" W 2662.76' (M)

N 00°40'43" W
2637.61' (C)

WAGNER 2N-10HZ
SURFACE LOCATION

22

1722'

1773'

1559'

1515'

HEEL LOCATION

N 00°26'14" W 2636.81' (M)

E. 1/4 COR.
SEC. 22, T1N, R67W
FOUND 2 1/2" ALUM. CAP
ILLEGIBLE

W. 1/4 COR.
SEC. 22, T1N, R67W
FOUND 3 1/4" ALUM. CAP
L.S. NO. 6973

S 89°22'57" W
2643.88' (C)

S 89°22'57" W
2651.65' (C)

N 00°45'14" W 2628.97' (M)

N 00°40'43" W
2632.95' (C)

SURFACE LOCATION: NAD 83
GROUND ELEVATION= 4972.7'
LATITUDE= 40.039095°
LONGITUDE= -104.872845°
LATITUDE= 40°02'20.744"
LONGITUDE= -104°52'22.243"
HEEL LOCATION: NAD 83
LATITUDE= 40.038956°
LONGITUDE= -104.872688°
LATITUDE= 40°02'20.243"
LONGITUDE= -104°52'21.676"
BOTTOM HOLE LOCATION: NAD 83
LATITUDE= 40.060475°
LONGITUDE= -104.872336°
LATITUDE= 40°03'37.710"
LONGITUDE= -104°52'20.410"

N 00°26'40" W 2637.08' (M)

SW. COR.
SEC. 22, T1N, R67W
FOUND 3 1/4" ALUM. CAP
L.S. NO. 13155

S 89°28'08" W 2640.44' (M)

S. 1/4 COR.
SEC. 22, T1N, R67W
FOUND 3 1/4" ALUM. CAP
L.S. NO. 13258

S 89°28'19" W 2640.86' (M)

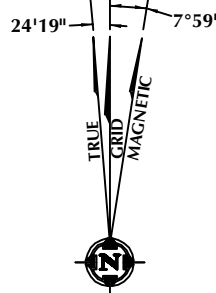
SE. COR.
SEC. 22, T1N, R67W
FOUND 3 1/4" ALUM. CAP
L.S. NO. 13155

CERTIFICATE OF SURVEYOR:

THIS IS TO CERTIFY THAT THE ABOVE PLAT WAS PREPARED FROM FIELD NOTES OF ACTUAL SURVEY MADE BY ME OR UNDER MY SUPERVISION AND THAT THE SAME ARE TRUE AND CORRECT TO THE BEST OF MY KNOWLEDGE AND BELIEF. THIS CERTIFICATE DOES NOT REPRESENT A LAND SURVEY PLAT OR IMPROVEMENT SURVEY PLAT AS DEFINED BY C.R.S. 38-51-302 AND CANNOT BE RELIED UPON TO DETERMINE OWNERSHIP.

John R. Slaugh
JOHN R. SLAUGH
PROFESSIONAL LAND SURVEYOR
COLORADO REGISTRATION NUMBER 38230
2/8/16

NOTICE:
ACCORDING TO COLORADO STATE LAW YOU MUST COMMENCE ANY LEGAL ACTION BASED UPON ANY DEFECT IN THIS SURVEY WITHIN THREE YEARS AFTER YOU FIRST DISCOVER SUCH DEFECT. IN NO EVENT MAY ANY ACTION BASED UPON ANY DEFECT IN THIS SURVEY BE COMMENCED MORE THAN TEN YEARS FROM THE DATE ON THE CERTIFICATION SHOWN HEREON.



NOTE:
MAGNETIC NORTH IS CURRENT AS OF 1/22/2016.
MAGNETIC NORTH CHANGES WEST 0°06' PER YEAR.

NOTES:

- ▲ INDICATES SECTION CORNER
- INDICATES CALCULATED CORNER
- ELEVATION BASED ON NAVD88 (GEOID12B)
- BASIS OF BEARING DERIVED FROM COLORADO COORDINATE SYSTEM OF 1983 NORTH ZONE.
- ALL MEASURED DISTANCES ARE GRID.
COMBINED SCALE FACTOR: .99972937
- OPERATOR: ROB WILSON / PDOP = 1.3
- SEE ADDENDUM TO WELL LOCATION CERTIFICATE FOR EXISTING IMPROVEMENTS WITHIN 500' OF THE WELL PAD.
- WELL FOOTAGES ARE MEASURED AT RIGHT ANGLES TO THE SECTION LINES.
- THE BOTTOM OF HOLE BEARS N00°18'52"E 7839' FROM THE HEEL LOCATION.



SCALE: 1" = 1000'

WELL PAD - WAGNER 2C-10HZ

WAGNER 2N-10HZ
WELL LOCATION CERTIFICATE
1722' FNL & 1559' FEL SWNE (SURFACE)
1773' FNL & 1515' FEL SWNE (HEEL)
LOCATED IN SECTION 22
800' FSL & 1395' FEL SWSE (BOTTOM)
LOCATED IN SECTION 10
T1N, R67W, 6TH P.M.
WELD COUNTY, COLORADO

Kerr-McGee Oil &
Gas Onshore L.P.
1099 18th Street
Denver, Colorado 80202



CONSULTING, LLC

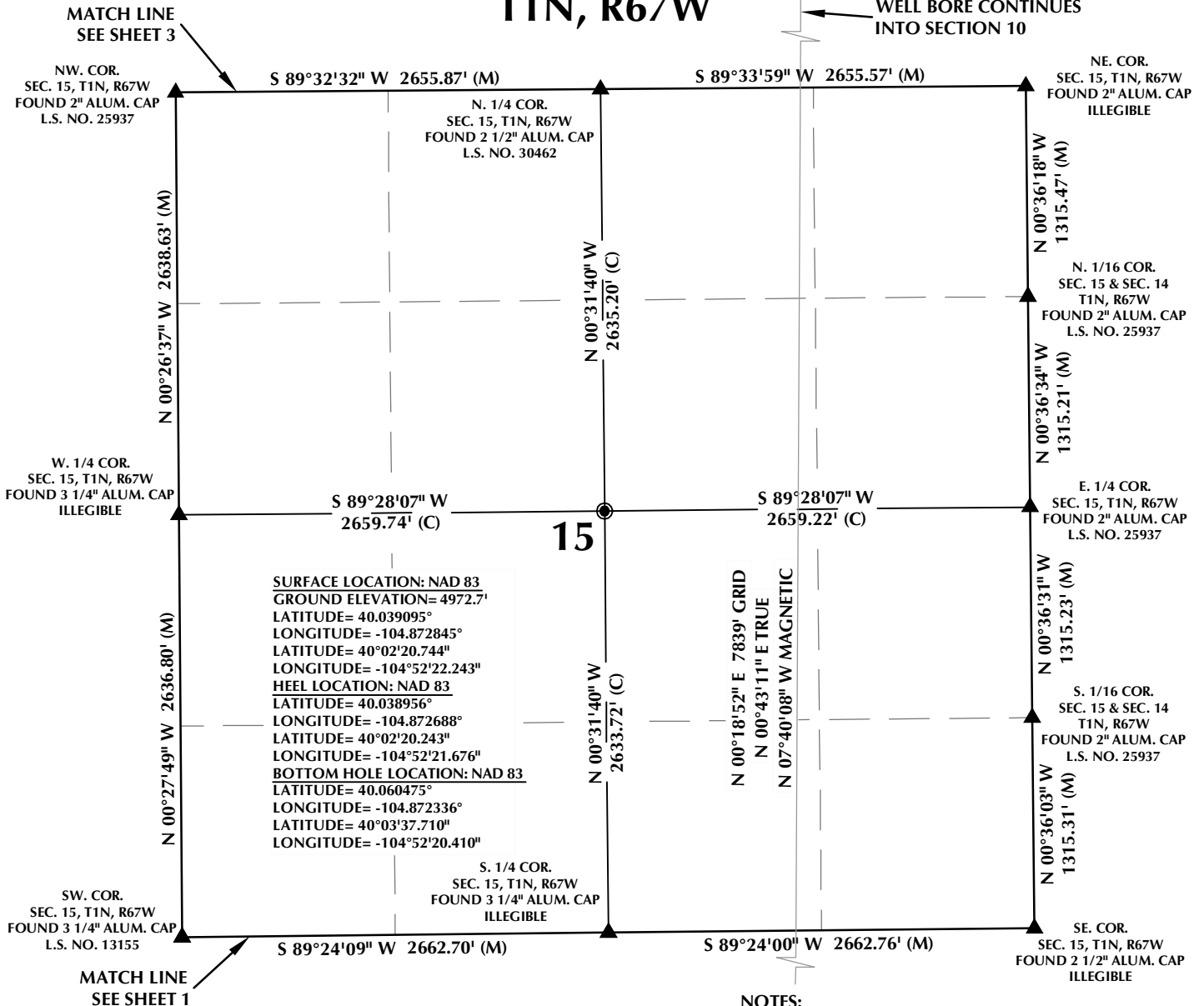
SHERIDAN OFFICE
1095 Saberton Avenue
Sheridan, Wyoming 82801
Phone 307-674-0609

LOVELAND OFFICE
1635 Foxtrail Drive, Suite 204
Loveland, Colorado 80538
Phone 970-776-4331

DRAFTED BY:	LMO	CHECKED BY:	JRS	SHEET NO:
DATE DRAFTED:	2/8/16	DATE SURVEYED:	9/14/15	1
REVISED:		FILE NAME:	15-60	1 OF 3

T1N, R67W

WELL BORE CONTINUES
INTO SECTION 10



SURFACE LOCATION: NAD 83
GROUND ELEVATION= 4972.7'
LATITUDE= 40.039095°
LONGITUDE= -104.872845°
LATITUDE= 40°02'20.744"
LONGITUDE= -104°52'22.243"
HEEL LOCATION: NAD 83
LATITUDE= 40.038956°
LONGITUDE= -104.872688°
LATITUDE= 40°02'20.243"
LONGITUDE= -104°52'21.676"
BOTTOM HOLE LOCATION: NAD 83
LATITUDE= 40.060475°
LONGITUDE= -104.872336°
LATITUDE= 40°03'37.710"
LONGITUDE= -104°52'20.410"

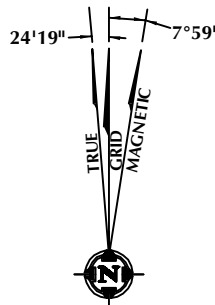
N 00°18'52" E 7839' GRID
N 00°43'11" E TRUE
N 07°40'08" W MAGNETIC

CERTIFICATE OF SURVEYOR:

THIS IS TO CERTIFY THAT THE ABOVE PLAT WAS PREPARED FROM FIELD NOTES OF ACTUAL SURVEY MADE BY ME OR UNDER MY SUPERVISION AND THAT THE SAME ARE TRUE AND CORRECT TO THE BEST OF MY KNOWLEDGE AND BELIEF. THIS CERTIFICATE DOES NOT REPRESENT A LAND SURVEY PLAT OR IMPROVEMENT SURVEY PLAT AS DEFINED BY C.R.S. 38-51-302 AND CANNOT BE RELIED UPON TO DETERMINE OWNERSHIP.

John R. Slaugh
JOHN R. SLAUGH
PROFESSIONAL LAND SURVEYOR
COLORADO REGISTRATION NUMBER 38230

NOTICE:
ACCORDING TO COLORADO STATE LAW YOU MUST COMMENCE ANY LEGAL ACTION BASED UPON ANY DEFECT IN THIS SURVEY WITHIN THREE YEARS AFTER YOU FIRST DISCOVER SUCH DEFECT. IN NO EVENT MAY ANY ACTION BASED UPON ANY DEFECT IN THIS SURVEY BE COMMENCED MORE THAN TEN YEARS FROM THE DATE ON THE CERTIFICATION SHOWN HEREON.



NOTE:
MAGNETIC NORTH IS CURRENT AS OF 1/22/2016.
MAGNETIC NORTH CHANGES WEST 0°06' PER YEAR.

NOTES:

- ▲ INDICATES SECTION CORNER
- INDICATES CALCULATED CORNER
- ELEVATION BASED ON NAVD88 (GEOID12B)
- BASIS OF BEARING DERIVED FROM COLORADO COORDINATE SYSTEM OF 1983 NORTH ZONE.
- ALL MEASURED DISTANCES ARE GRID.
COMBINED SCALE FACTOR: .99972937
- OPERATOR: ROB WILSON / PDOP = 1.3
- SEE ADDENDUM TO WELL LOCATION CERTIFICATE FOR EXISTING IMPROVEMENTS WITHIN 500' OF THE WELL PAD.
- WELL FOOTAGES ARE MEASURED AT RIGHT ANGLES TO THE SECTION LINES.
- THE BOTTOM OF HOLE BEARS N00°18'52"E 7839' FROM THE HEEL LOCATION.

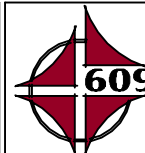


SCALE: 1" = 1000'

WELL PAD - WAGNER 2C-10HZ

WAGNER 2N-10HZ
WELL LOCATION CERTIFICATE
1722' FNL & 1559' FEL SWNE (SURFACE)
1773' FNL & 1515' FEL SWNE (HEEL)
LOCATED IN SECTION 22
800' FSL & 1395' FEL SWSE (BOTTOM)
LOCATED IN SECTION 10
T1N, R67W, 6TH P.M.
WELD COUNTY, COLORADO

**Kerr-McGee Oil &
Gas Onshore L.P.**
1099 18th Street
Denver, Colorado 80202



CONSULTING, LLC

SHERIDAN OFFICE
1095 Saberton Avenue
Sheridan, Wyoming 82801
Phone 307-674-0609

LOVELAND OFFICE
1635 Foxtrail Drive, Suite 204
Loveland, Colorado 80538
Phone 970-776-4331

DRAFTED BY:	LMO	CHECKED BY:	JRS	SHEET NO:
DATE DRAFTED:	2/8/16	DATE SURVEYED:	9/14/15	2
REVISED:		FILE NAME:	15-60	2 OF 3

T1N, R67W

NW. COR.
SEC. 10, T1N, R67W
FOUND 3 1/4" ALUM. CAP
L.S. NO. 38285

S 89°33'37" W
1322.65' (M)

S 89°33'29" W
1322.75' (M)

S 89°33'38" W 2645.71' (M)

NE. COR.
SEC. 10, T1N, R67W
FOUND 2" ALUM. CAP
L.S. NO. 25937

W. 1/16 COR.
SEC. 10 & SEC. 3
T1N, R67W
FOUND 2" ALUM. CAP
L.S. NO. 25937

N. 1/4 COR.
SEC. 10, T1N, R67W
FOUND 2" ALUM. CAP
L.S. NO. 25937

SURFACE LOCATION: NAD 83
GROUND ELEVATION= 4972.7'
LATITUDE= 40.039095°
LONGITUDE= -104.872845°
LATITUDE= 40°02'20.744"
LONGITUDE= -104°52'22.243"
HEEL LOCATION: NAD 83
LATITUDE= 40.038956°
LONGITUDE= -104.872688°
LATITUDE= 40°02'20.243"
LONGITUDE= -104°52'21.676"
BOTTOM HOLE LOCATION: NAD 83
LATITUDE= 40.060475°
LONGITUDE= -104.872336°
LATITUDE= 40°03'37.710"
LONGITUDE= -104°52'20.410"

W. 1/4 COR.
SEC. 10, T1N, R67W
FOUND 3 1/4" ALUM. CAP
L.S. NO. 38285

CENTER W. 1/16 COR.
SEC. 10, T1N, R67W
FOUND 2" ALUM. CAP
L.S. NO. 25937

CENTER COR.
SEC. 10, T1N, R67W
FOUND 2" ALUM. CAP
L.S. NO. 25937

10

S 89°32'55" W
1325.45' (M)

S 89°33'52" W
1325.23' (M)

S 89°33'33" W
2650.90' (M)

E. 1/4 COR.
SEC. 10, T1N, R67W
FOUND 2" ALUM. CAP
L.S. NO. 25937

N 00°19'39" W 2642.78' (M)
N 00°20'23" W 2642.97' (M)

N 00°26'32" W 2642.65' (M)
N 00°27'08" W 2642.31' (M)

N 00°33'17" W 2642.59' (M)
N 00°33'13" W 2642.65' (M)

SW. COR.
SEC. 10, T1N, R67W
FOUND 2" ALUM. CAP
L.S. NO. 25937

S. 1/4 COR.
SEC. 10, T1N, R67W
FOUND 2 1/2" ALUM. CAP
L.S. NO. 30462

SE. COR.
SEC. 10, T1N, R67W
FOUND 2" ALUM. CAP
ILLEGIBLE

S 89°32'32" W 2655.87' (M)

S 89°33'59" W 2655.57' (M)

MATCH LINE
SEE SHEET 2

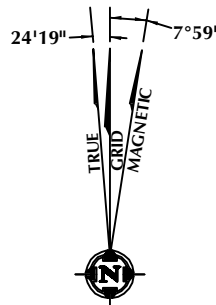
BOTTOM OF HOLE:
800' FSL & 1395' FEL

CERTIFICATE OF SURVEYOR:

THIS IS TO CERTIFY THAT THE ABOVE PLAT WAS PREPARED FROM FIELD NOTES OF ACTUAL SURVEY MADE BY ME OR UNDER MY SUPERVISION AND THAT THE SAME ARE TRUE AND CORRECT TO THE BEST OF MY KNOWLEDGE AND BELIEF. THIS CERTIFICATE DOES NOT REPRESENT A LAND SURVEY PLAT OR IMPROVEMENT SURVEY PLAT AS DEFINED BY C.R.S. 38-51-302 AND CANNOT BE RELIED UPON TO DETERMINE OWNERSHIP.

John R. Slough
JOHN R. SLOUGH
PROFESSIONAL LAND SURVEYOR
COLORADO REGISTRATION NUMBER 38230
2/8/16

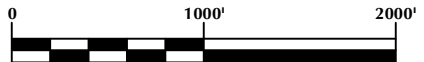
NOTICE:
ACCORDING TO COLORADO STATE LAW YOU MUST COMMENCE ANY LEGAL ACTION BASED UPON ANY DEFECT IN THIS SURVEY WITHIN THREE YEARS AFTER YOU FIRST DISCOVER SUCH DEFECT. IN NO EVENT MAY ANY ACTION BASED UPON ANY DEFECT IN THIS SURVEY BE COMMENCED MORE THAN TEN YEARS FROM THE DATE ON THE CERTIFICATION SHOWN HEREON.



NOTE:
MAGNETIC NORTH IS CURRENT AS OF 1/22/2016.
MAGNETIC NORTH CHANGES WEST 0°06' PER YEAR.

NOTES:

- ▲ INDICATES SECTION CORNER
- INDICATES CALCULATED CORNER
- ELEVATION BASED ON NAVD88 (GEOID12B)
- BASIS OF BEARING DERIVED FROM COLORADO COORDINATE SYSTEM OF 1983 NORTH ZONE.
- ALL MEASURED DISTANCES ARE GRID.
COMBINED SCALE FACTOR: .99972937
- OPERATOR: ROB WILSON / PDOP = 1.3
- SEE ADDENDUM TO WELL LOCATION CERTIFICATE FOR EXISTING IMPROVEMENTS WITHIN 500' OF THE WELL PAD.
- WELL FOOTAGES ARE MEASURED AT RIGHT ANGLES TO THE SECTION LINES.
- THE BOTTOM OF HOLE BEARS N00°18'52"E 7839' FROM THE HEEL LOCATION.



SCALE: 1" = 1000'

WELL PAD - WAGNER 2C-10HZ

WAGNER 2N-10HZ
WELL LOCATION CERTIFICATE
1722' FNL & 1559' FEL SWNE (SURFACE)
1773' FNL & 1515' FEL SWNE (HEEL)
LOCATED IN SECTION 22
800' FSL & 1395' FEL SWSE (BOTTOM)
LOCATED IN SECTION 10
T1N, R67W, 6TH P.M.
WELD COUNTY, COLORADO

Kerr-McGee Oil &
Gas Onshore L.P.
1099 18th Street
Denver, Colorado 80202



CONSULTING, LLC

SHERIDAN OFFICE
1095 Saberton Avenue
Sheridan, Wyoming 82801
Phone 307-674-0609

LOVELAND OFFICE
1635 Foxtrail Drive, Suite 204
Loveland, Colorado 80538
Phone 970-776-4331

DRAFTED BY:	LMO	CHECKED BY:	JRS	SHEET NO:
DATE DRAFTED:	2/8/16	DATE SURVEYED:	9/14/15	3
REVISED:		FILE NAME:	15-60	3 OF 3