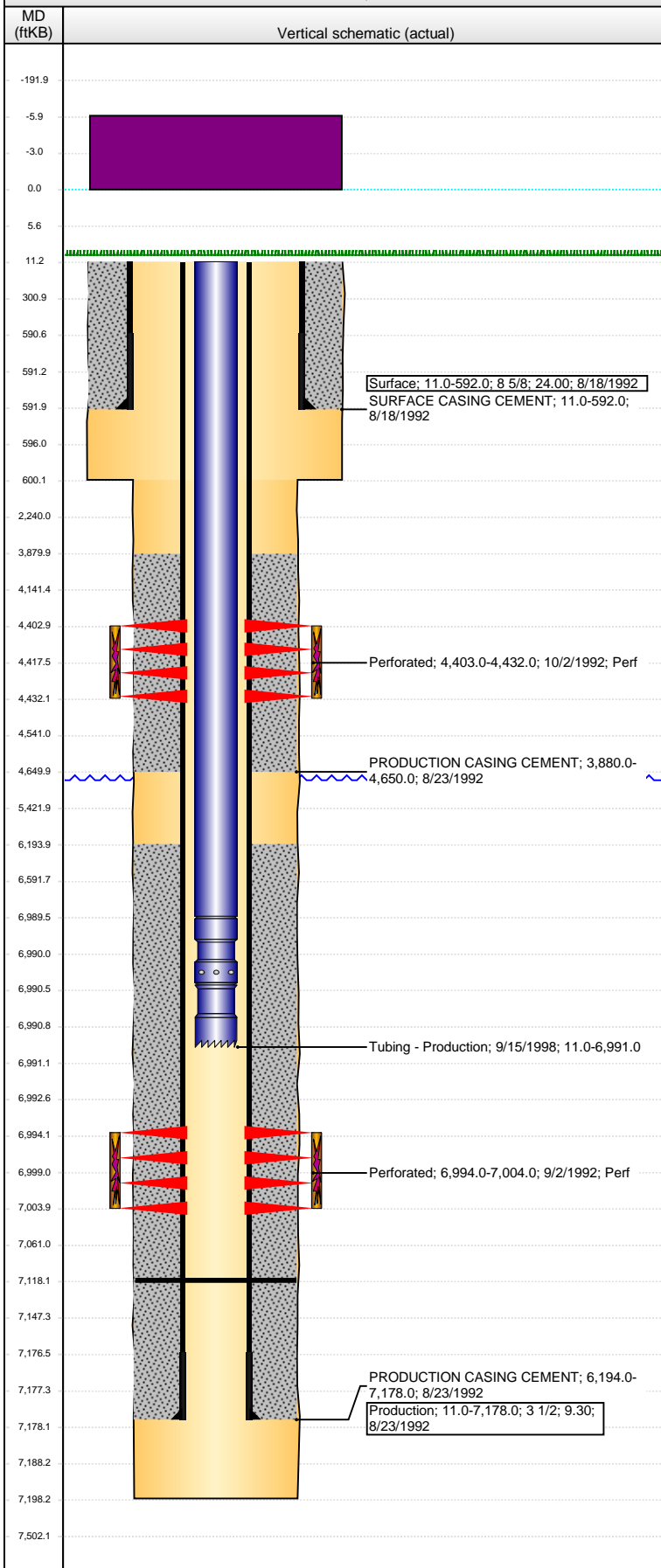


Well Name: SPIKE STATE D28-14

VERTICAL - ORIGINAL HOLE, 5/3/2016 9:41:55 AM



Well Header							
API 05-123-15993		Business Unit DJ BASIN		District 15		Well Config VERTICAL	
Original KB Elevation (ft) 4,813		KB - GL / MSL (ftKB) 10.00		Spud Date 8/17/1992		P & A Date	
Comment SI DUE TO HOLES IN TUBING							
Directions To Well							
Congressional Location							
Quarter 1	Quarter 2	Quarter 3 SE	Quarter 4 SW	Section 28	Township 3 N	Twnshp N...	Range 64 W
Rng E/W Dir W							
Bottom Hole Location							
North-South Distance (ft)		From N or S Line		East-West Distance (ft)		From E or W Line	
Plug Back Total Depths							
Date	Depth (ftKB)	Method		Com			
8/21/1992	7,118.0	TAG					
Wellbore Sections							
Section Des		Size (in)	Act Top, MD (ftKB)		Act Btm, MD (ftKB)		
SURFACE		12 1/4	11.0		600.0		
PRODUCTION		7 7/8	600.0		7,198.0		
Zone Statuses							
Zone Name	Status Date	Status	Fluid Type	Job	Prod Method		
CODELL	9/5/1992	PR	Oil	DRILLING/CO...			
CODELL	11/14/1992	PR	Oil	COMMINGLE...			
SUSSEX	10/21/1992	PR	Oil	RECOMPLETI...			
SUSSEX	11/14/1992	PR	Oil	COMMINGLE...			
Casing Strings							
Surface, 592.0ftKB							
Casing Description	Run Date	OD (in)	Wt/Len (l...)	Grade	Top, MD (ft...)	MD (ftKB)	
Surface	8/18/1992	8 5/8	24.00		11.0	592.0	
Production, 7,178.0ftKB							
Casing Description	Run Date	OD (in)	Wt/Len (l...)	Grade	Top, MD (ft...)	MD (ftKB)	
Production	8/23/1992	3 1/2	9.30		11.0	7,178.0	
Cement							
Description					Top Depth (ftKB)	Bottom Depth (ftKB)	
SURFACE CASING CEMENT					11.0	592.0	
Description					Top Depth (ftKB)	Bottom Depth (ftKB)	
PRODUCTION CASING CEMENT					3,880.0	4,650.0	
Description					Top Depth (ftKB)	Bottom Depth (ftKB)	
PRODUCTION CASING CEMENT					6,194.0	7,178.0	
Tubing Strings							
Tubing Description	Run Date	String...	ID (in)	Wt (lb/ft)	Grade	Len (ft)	Set De...
Tubing - Production	9/15/1998	2 1/16	1.751	3.25	J-55	6,980.00	
Tubing Components							
Item Des	OD (in)	Wt (lb/ft)	Grade	Jts	Len (ft)	Btm (ftKB)	Btm (TVD) (ftKB)
Tubing	2 1/16	3.25	J-55	212	6,978.40	6,989.4	
Pump Seating Nipple	2 1/16			1	1.00	6,990.4	
Notched collar	2 1/16			1	0.60	6,991.0	
Perforation Data							
Zone	Bnch/St g	Entered Shot Total	Top (ftKB)	Btm (ftKB)	Date		
SUSSEX, ORIGINAL HOLE		60	4,403.00	4,432.00	10/2/1992		
CODELL, ORIGINAL HOLE		40	6,994.00	7,004.00	9/2/1992		
Stimulations & Treatments							
Date	Zone	Primary Job Type					
9/4/1992	CODELL, ORIGINAL HOLE	DRILLING/COMPLETION - ORIGINAL					
Technical Result		Tech Result Details			Tech Result Note		
Comment							

Well Name: SPIKE STATE D28-14

VERTICAL - ORIGINAL HOLE, 5/3/2016 9:41:57 AM

Stimulations & Treatments

Date	Zone	Primary Job Type
10/1/1992	SUSSEX, ORIGINAL HOLE	RECOMPLETION
Technical Result	Tech Result Details	Tech Result Note
Comment		

Other In Hole

Run Date	Des	OD (in)	Top (ftKB)	Btm (ftKB)

Logs

Date	Type	Top, MD (ftKB)	Btm, MD (ftKB)
8/22/1992	COMPENSATED DENSITY	3,890.0	7,168.0
8/22/1992	INDUCTION	3,890.0	4,650.0
9/2/1992	CEMENT BOND	3,790.0	7,115.0

