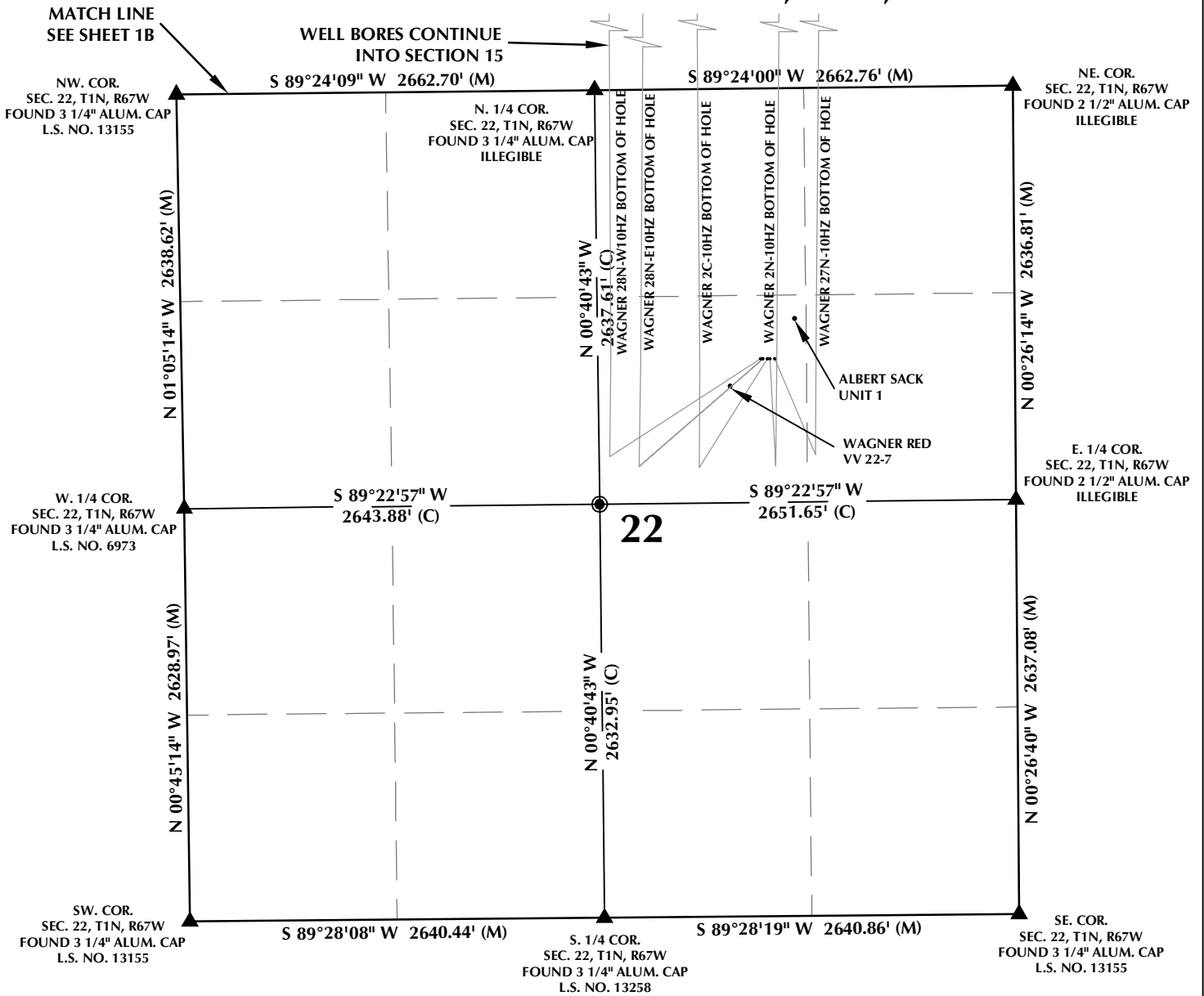


MULTI-WELL PLAN SECTION 22, T1N, R67W



WELL NOTES:

WAGNER 28N-W10HZ
 SURFACE: 1722' FNL, 1619' FEL
 BOTTOM HOLE: 800' FSL, 2535' FEL

WAGNER 28N-E10HZ
 SURFACE: 1722' FNL, 1604' FEL
 BOTTOM HOLE: 800' FSL, 2263' FEL

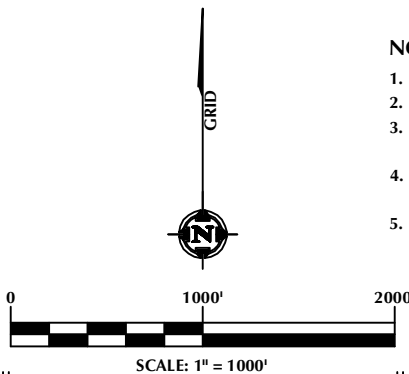
WAGNER 2C-10HZ
 SURFACE: 1722' FNL, 1574' FEL
 BOTTOM HOLE: 800' FSL, 1989' FEL

WAGNER 2N-10HZ
 SURFACE: 1722' FNL, 1559' FEL
 BOTTOM HOLE: 800' FSL, 1395' FEL

WAGNER 27N-10HZ
 SURFACE: 1722' FNL, 1529' FEL
 BOTTOM HOLE: 800' FSL, 1132' FEL

NOTES:

- ▲ INDICATES SECTION CORNER
- INDICATES CALCULATED CORNER
- BASIS OF BEARING DERIVED FROM COLORADO COORDINATE SYSTEM OF 1983 NORTH ZONE.
- ALL MEASURED DISTANCES ARE GRID.
- COMBINED SCALE FACTOR: .99972937
- WELL FOOTAGES ARE MEASURED AT RIGHT ANGLES TO THE SECTION LINES.



WELL PAD - WAGNER 2C-10HZ

MULTI-WELL PLAN
 WAGNER 28N-W10HZ,
 WAGNER 28N-E10HZ, WAGNER 2C-10HZ,
 WAGNER 2N-10HZ & WAGNER 27N-10HZ
 LOCATED IN SECTIONS 10, 15 & 22
 T1N, R67W, 6TH P.M.
 WELD COUNTY, COLORADO

**Kerr-McGee Oil &
 Gas Onshore L.P.**
 1099 18th Street
 Denver, Colorado 80202



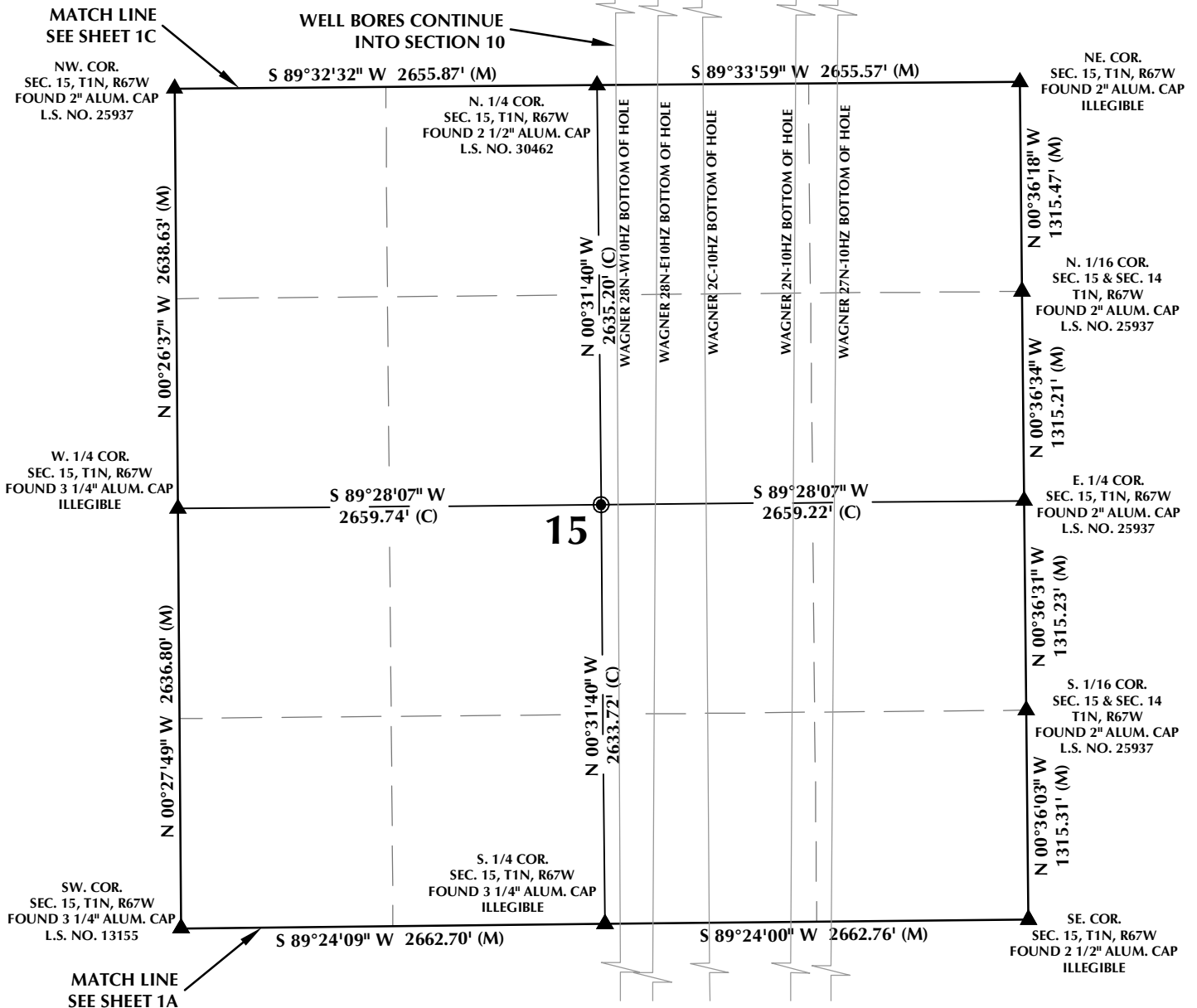
CONSULTING, LLC

SHERIDAN OFFICE
 1095 Saberton Avenue
 Sheridan, Wyoming 82801
 Phone 307-674-0609

LOVELAND OFFICE
 1635 Foxtrail Drive, Suite 204
 Loveland, Colorado 80538
 Phone 970-776-4331

DRAFTED BY:	LMO	CHECKED BY:	JRS	SHEET NO:
DATE DRAFTED:	2/8/16	DATE SURVEYED:	9/14/15	1A
REVISED:	3/30/16	FILE NAME:	15-60	1A OF 1

MULTI-WELL PLAN SECTION 15, T1N, R67W



WELL NOTES:

WAGNER 28N-W10HZ
SURFACE: 1722' FNL, 1619' FEL
BOTTOM HOLE: 800' FSL, 2535' FEL

WAGNER 28N-E10HZ
SURFACE: 1722' FNL, 1604' FEL
BOTTOM HOLE: 800' FSL, 2263' FEL

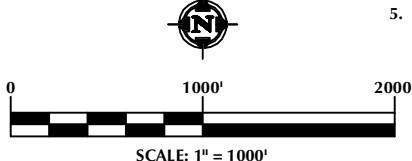
WAGNER 2C-10HZ
SURFACE: 1722' FNL, 1574' FEL
BOTTOM HOLE: 800' FSL, 1989' FEL

WAGNER 2N-10HZ
SURFACE: 1722' FNL, 1559' FEL
BOTTOM HOLE: 800' FSL, 1395' FEL

WAGNER 27N-10HZ
SURFACE: 1722' FNL, 1529' FEL
BOTTOM HOLE: 800' FSL, 1132' FEL

NOTES:

- ▲ INDICATES SECTION CORNER
- INDICATES CALCULATED CORNER
- BASIS OF BEARING DERIVED FROM COLORADO COORDINATE SYSTEM OF 1983 NORTH ZONE.
- ALL MEASURED DISTANCES ARE GRID.
COMBINED SCALE FACTOR: .99972937
- WELL FOOTAGES ARE MEASURED AT RIGHT ANGLES TO THE SECTION LINES.



WELL PAD - WAGNER 2C-10HZ

MULTI-WELL PLAN
WAGNER 28N-W10HZ,
WAGNER 28N-E10HZ, WAGNER 2C-10HZ,
WAGNER 2N-10HZ & WAGNER 27N-10HZ
LOCATED IN SECTIONS 10, 15 & 22
T1N, R67W, 6TH P.M.
WELD COUNTY, COLORADO

**Kerr-McGee Oil &
Gas Onshore L.P.**
1099 18th Street
Denver, Colorado 80202



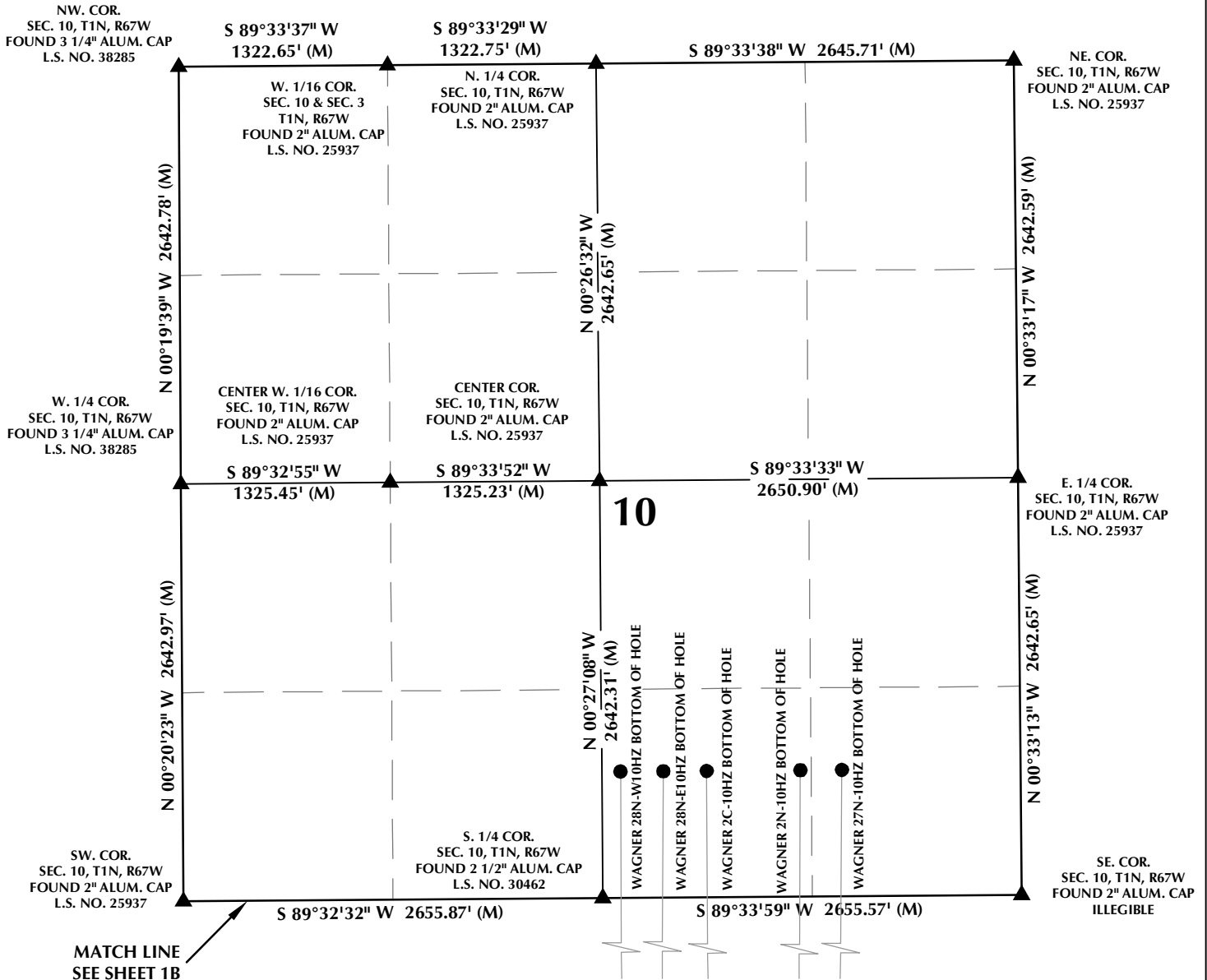
CONSULTING, LLC

SHERIDAN OFFICE
1095 Saberton Avenue
Sheridan, Wyoming 82801
Phone 307-674-0609

LOVELAND OFFICE
1635 Foxtrail Drive, Suite 204
Loveland, Colorado 80538
Phone 970-776-4331

DRAFTED BY:	LMO	CHECKED BY:	JRS	SHEET NO:
DATE DRAFTED:	2/8/16	DATE SURVEYED:	9/14/15	1B
REVISED:	3/30/16	FILE NAME:	15-60	1B OF 1

MULTI-WELL PLAN SECTION 10, T1N, R67W



WELL NOTES:

WAGNER 28N-W10HZ
SURFACE: 1722' FNL, 1619' FEL
BOTTOM HOLE: 800' FSL, 2535' FEL

WAGNER 28N-E10HZ
SURFACE: 1722' FNL, 1604' FEL
BOTTOM HOLE: 800' FSL, 2263' FEL

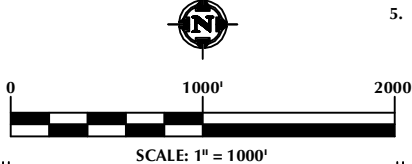
WAGNER 2C-10HZ
SURFACE: 1722' FNL, 1574' FEL
BOTTOM HOLE: 800' FSL, 1989' FEL

WAGNER 2N-10HZ
SURFACE: 1722' FNL, 1559' FEL
BOTTOM HOLE: 800' FSL, 1395' FEL

WAGNER 27N-10HZ
SURFACE: 1722' FNL, 1529' FEL
BOTTOM HOLE: 800' FSL, 1132' FEL

NOTES:

- ▲ INDICATES SECTION CORNER
- INDICATES CALCULATED CORNER
- BASIS OF BEARING DERIVED FROM COLORADO COORDINATE SYSTEM OF 1983 NORTH ZONE.
- ALL MEASURED DISTANCES ARE GRID.
- COMBINED SCALE FACTOR: .99972937
- WELL FOOTAGES ARE MEASURED AT RIGHT ANGLES TO THE SECTION LINES.



WELL PAD - WAGNER 2C-10HZ

MULTI-WELL PLAN
WAGNER 28N-W10HZ,
WAGNER 28N-E10HZ, WAGNER 2C-10HZ,
WAGNER 2N-10HZ & WAGNER 27N-10HZ
LOCATED IN SECTIONS 10, 15 & 22
T1N, R67W, 6TH P.M.
WELD COUNTY, COLORADO

**Kerr-McGee Oil &
Gas Onshore L.P.**
1099 18th Street
Denver, Colorado 80202



CONSULTING, LLC

SHERIDAN OFFICE
1095 Saberton Avenue
Sheridan, Wyoming 82801
Phone 307-674-0609

LOVELAND OFFICE
1635 Foxtrail Drive, Suite 204
Loveland, Colorado 80538
Phone 970-776-4331

DRAFTED BY:	LMO	CHECKED BY:	JRS	SHEET NO:
DATE DRAFTED:	2/8/16	DATE SURVEYED:	9/14/15	1C
REVISED:	3/30/16	FILE NAME:	15-60	1C OF 1