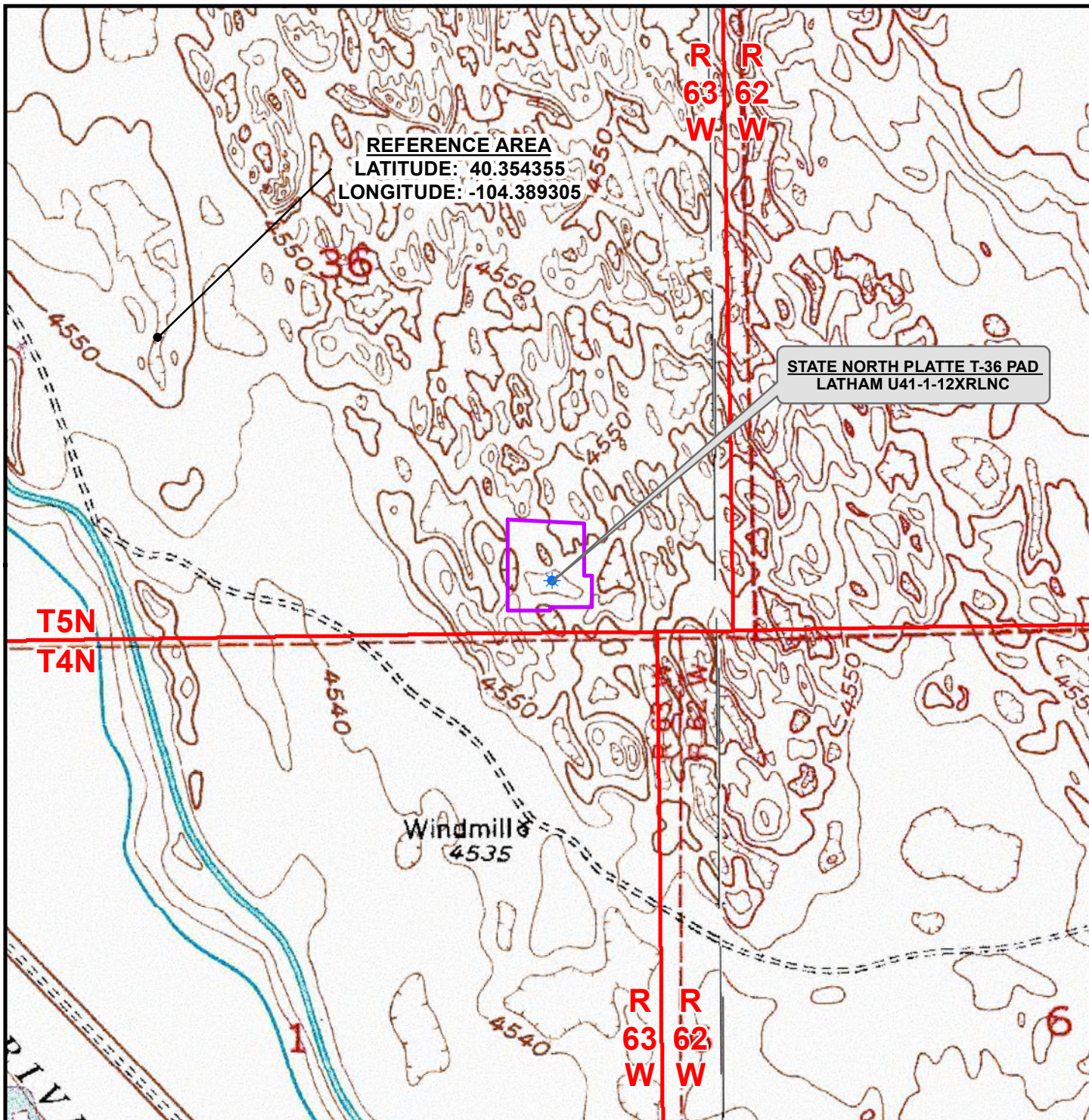


K:\BONANZA CREEK\2013_04_2014_WELL_STAKING\GIS\Maps_ABC\StateNorthPlatte T-36\StateNorthPlatte T-36 Ref.mxd 9/30/2015 11:01:24 AM



Legend

- Well - State - Proposed
- Disturbance Area

WELL PAD - STATE NORTH PLATTE T-36

REFERENCE AREA MAP
LATHAM U41-1-12XRLNC
LOCATED IN SE1/4 SE1/4
SECTION 36, T5N, R63W, 6th P.M.
WELD COUNTY, COLORADO



**BONANZA
CREEK**

410 17th Street, Suite 1400
Denver, Colorado 80202



CONSULTING, LLC

1095 Saberton Avenue
Sheridan, Wyoming 82801
Phone 307-674-0609

LOVELAND OFFICE
1635 Foxtail Drive, Suite 204
Loveland, Colorado 80538
Phone 970-776-4331



SCALE: 1" = 1,000ft

NAD83 CO-Nft

DRAWN: TL

DATE: 23 Sept 2015

REVISED:

DATE: