

Company UNITED STATES EXPLORATION INC.
Well NATIONAL HOG FARMS 21-21
Field WATTENBERG
County WELD
State COLORADO

Company UNITED STATES EXPLORATION INC.
Well NATIONAL HOG FARMS 21-21
Field WATTENBERG
County WELD
State COLORADO

Location SE NW
SEC 21 TWP 5N RGE 63W
Permanent Datum G.L.
Log Measured From K.B.
Drilling Measured From K.B.
Other Services NONE
Elevation 4634
K.B. 4646
D.F. 4645
G.L. 4634

Date	20-MAY-2002
Run Number	1
Depth Driller	7406
Depth Logger	7365
Bottom Logged Interval	7360
Top Log Interval	2895
Open Hole Size	KCL
Type Fluid	KCL
Density / Viscosity	---
Max Recorded Temp	---
Estimated Cement Top	3070
Time Well Ready	OA
Time Logger on Bottom	13:30
Equipment Number	201
Location	FTM
Recorded By	GRIMES
Witnessed By	MR DEAN ROGERS
Borehole Record	
Run Number	Bit From To Size Weight
Tubing Record	
From To	
Casing Record	Size Wgt/Ft Top Bottom
Surface String	
Prot. String	
Production String	4.50 11.60 SURF 7400
Liner	

--- Fold Here ---

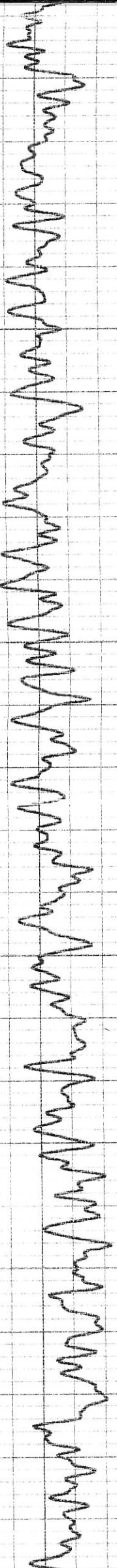
All interpretations are opinions based on inferences from electrical or other measurements and we cannot and do not guarantee the accuracy or correctness of any interpretation, and we shall not, except in the case of gross or willful negligence on our part, be liable or responsible for any loss, costs, damages, or expenses incurred or sustained by anyone resulting from any interpretation made by any of our officers, agents or employees. These interpretations are also subject to our general terms and conditions set out in our current Price Schedule.

Comments

BOND LOG CORRELATED TO PSI LOGGING CD/CN/DIFL DATED 11 MAY 2002

Database File: nhf2121 db
Dataset Pathname: pass2
Presentation Format: cbix.prs
Dataset Creation: Mon May 20 07:15:06 2002 by Log VER_5.4
Charted by: Depth in Feet scaled 1:240

0	GR (GAPI)	300	-0.2CCL	35	0	Amplitude (mV)	85	200	Variable Density	1200
						0	Amplified Amplitude (mV)	30		

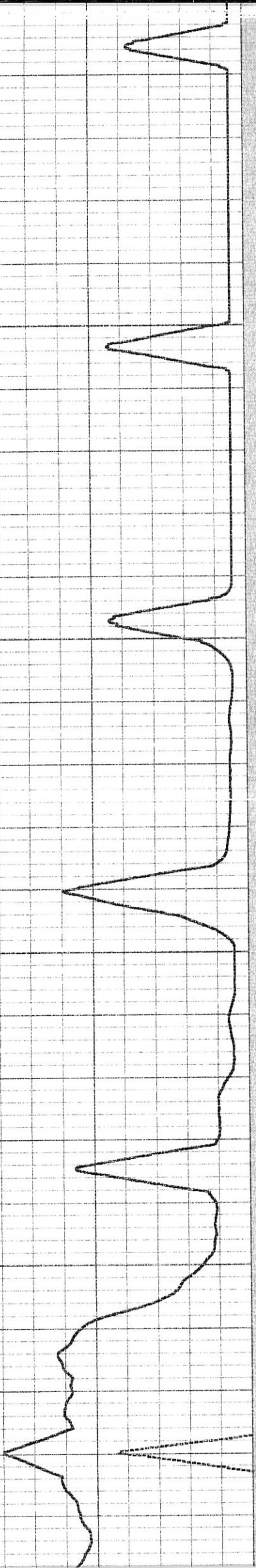


2000

3000

Top of Cement

3100



GR

CCL

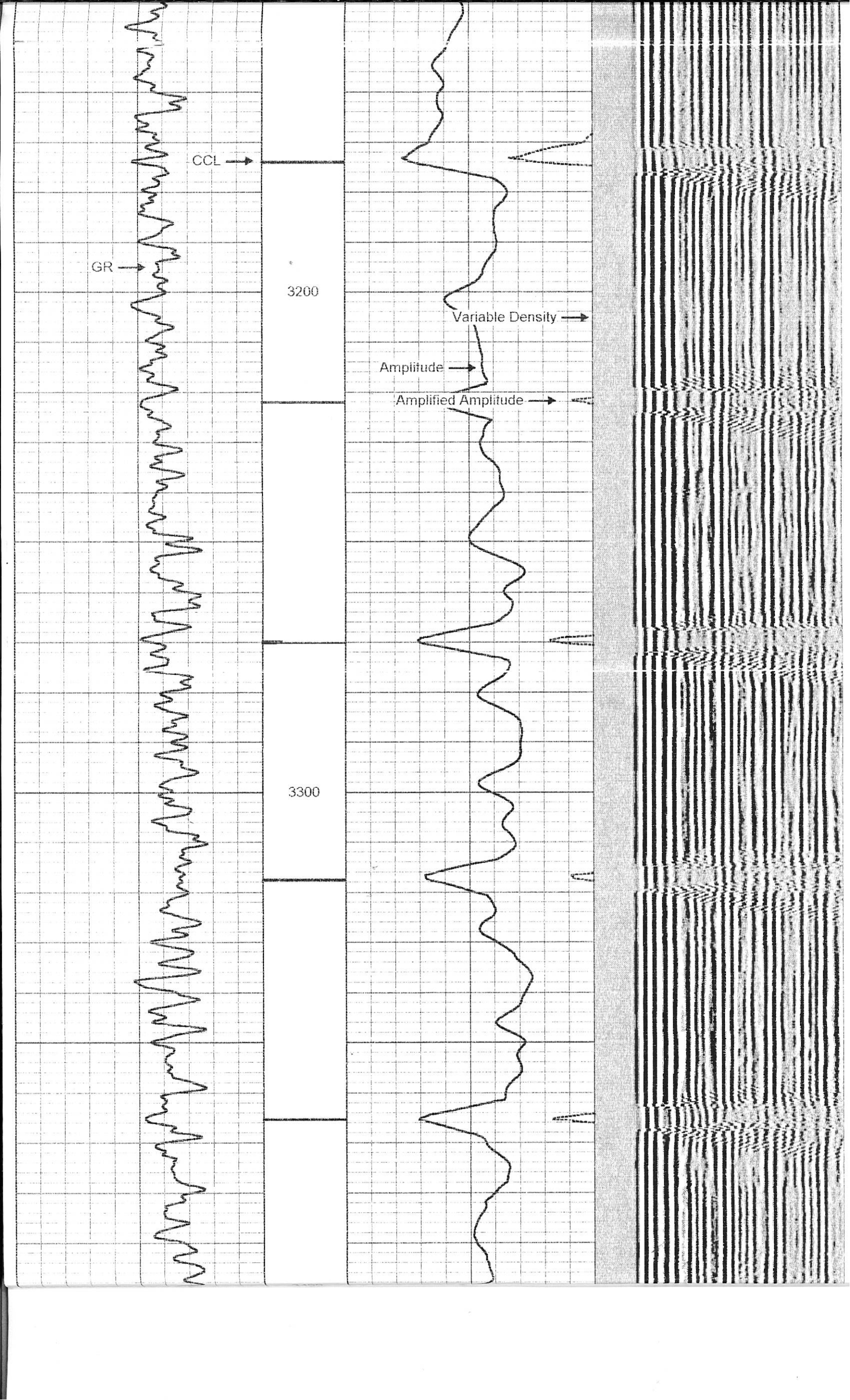
3200

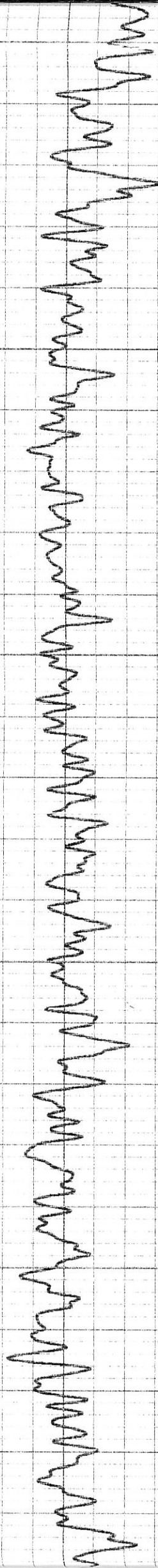
Variable Density

Amplitude

Amplified Amplitude

3300

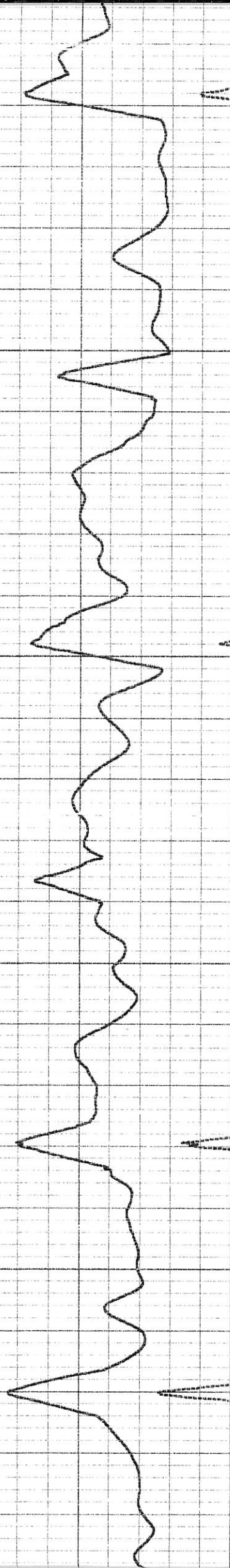


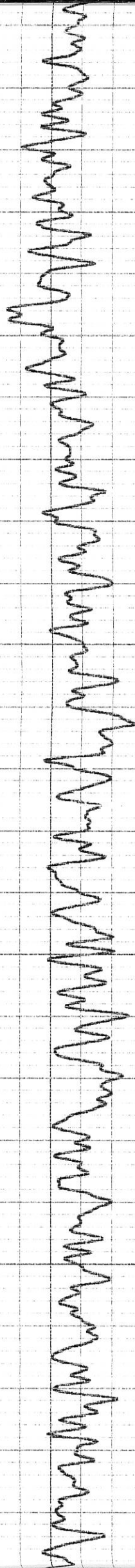


3400

3500

3600

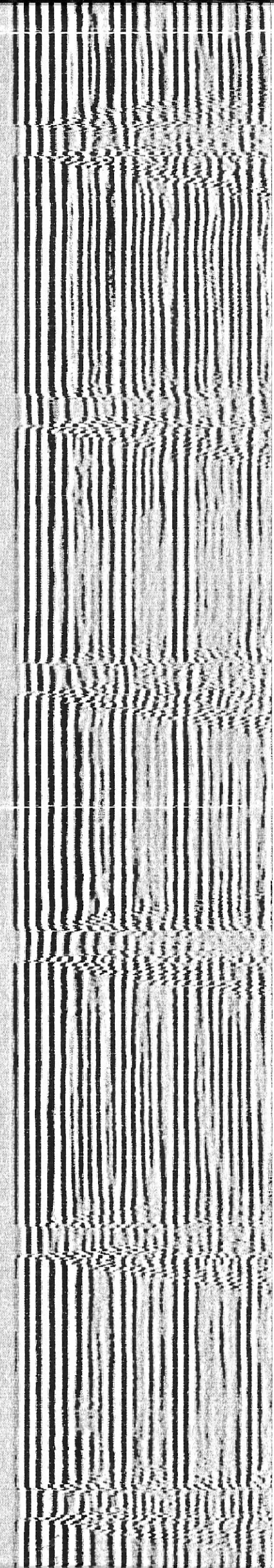
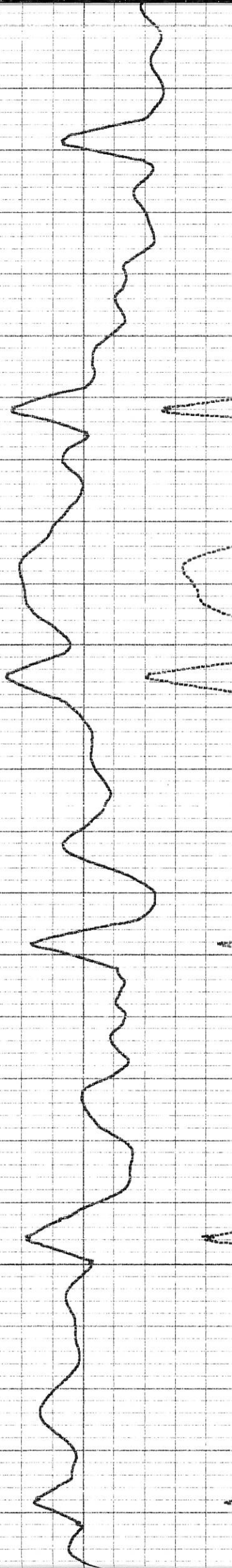


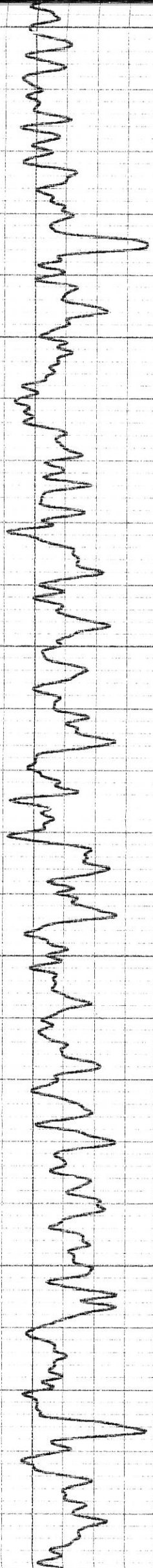


3700

3800

3900

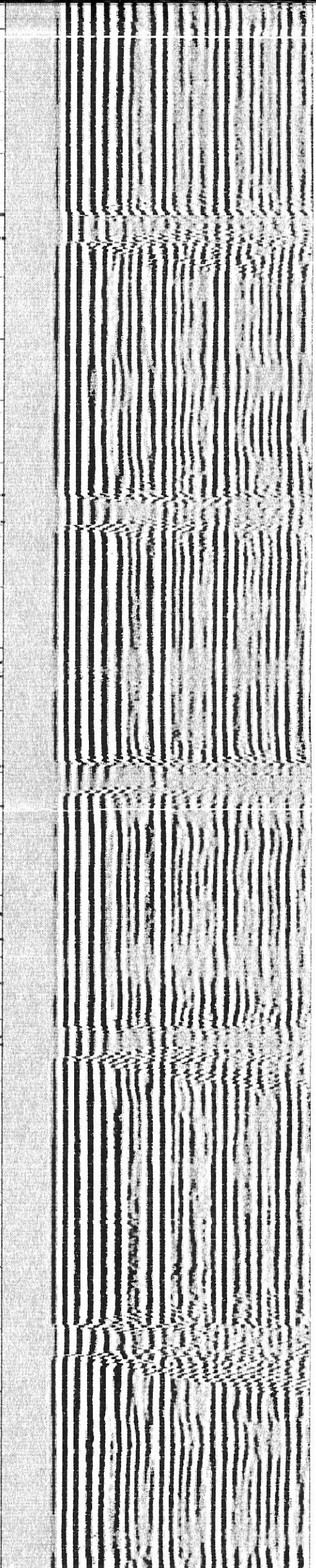
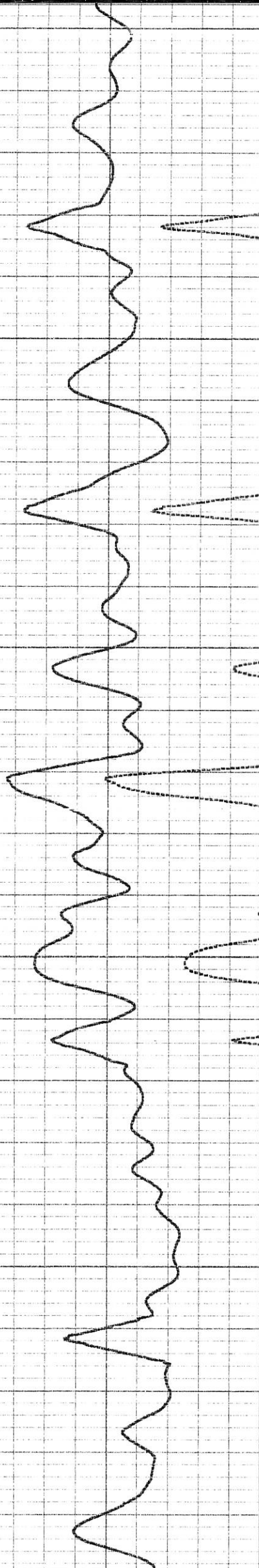




3900

4000

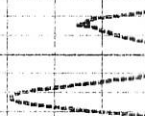
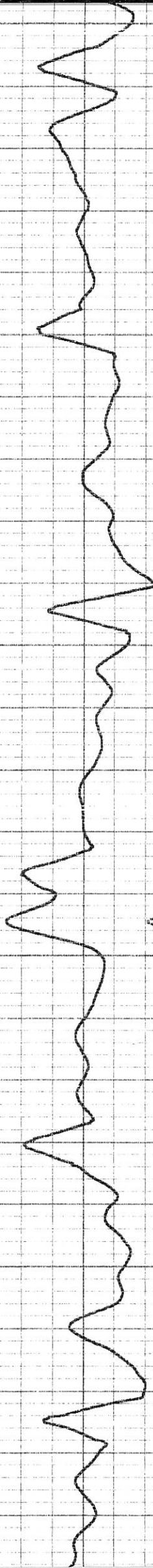
4100

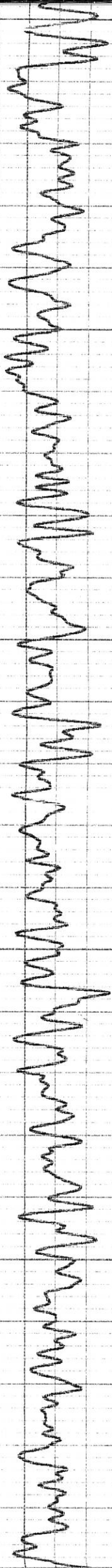




4200

4300



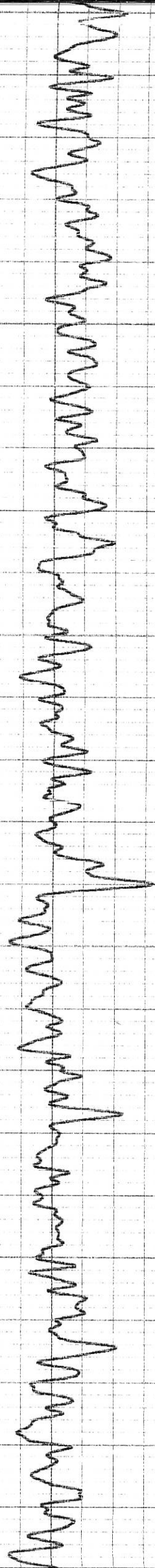


4400

4500

4600



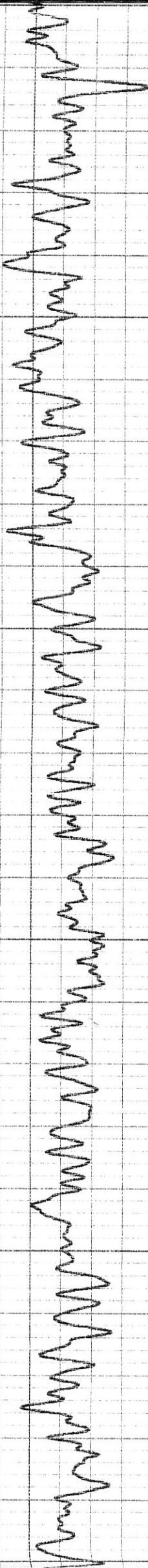


4700

4800

4900

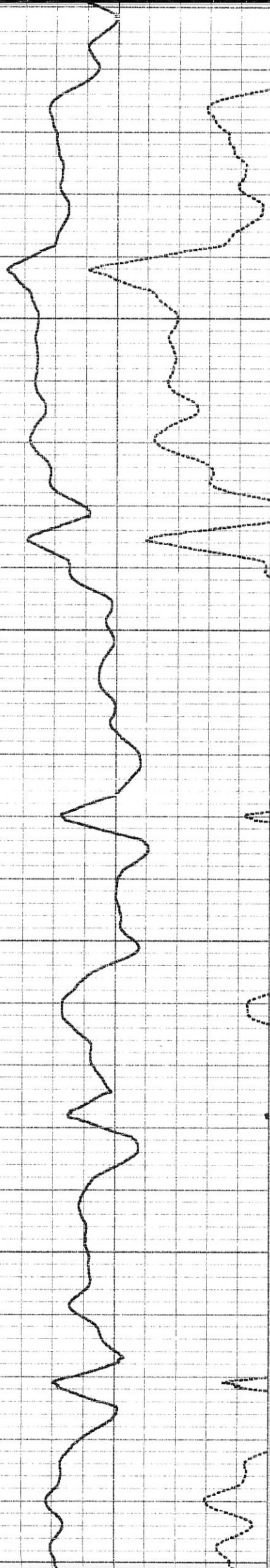


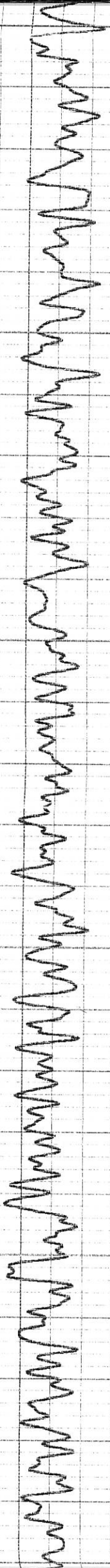


4900

5000

5100

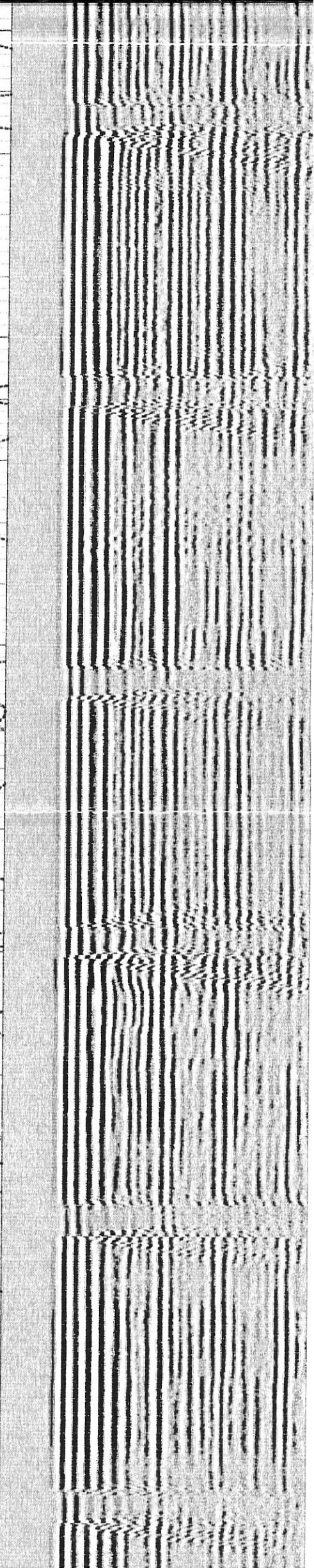


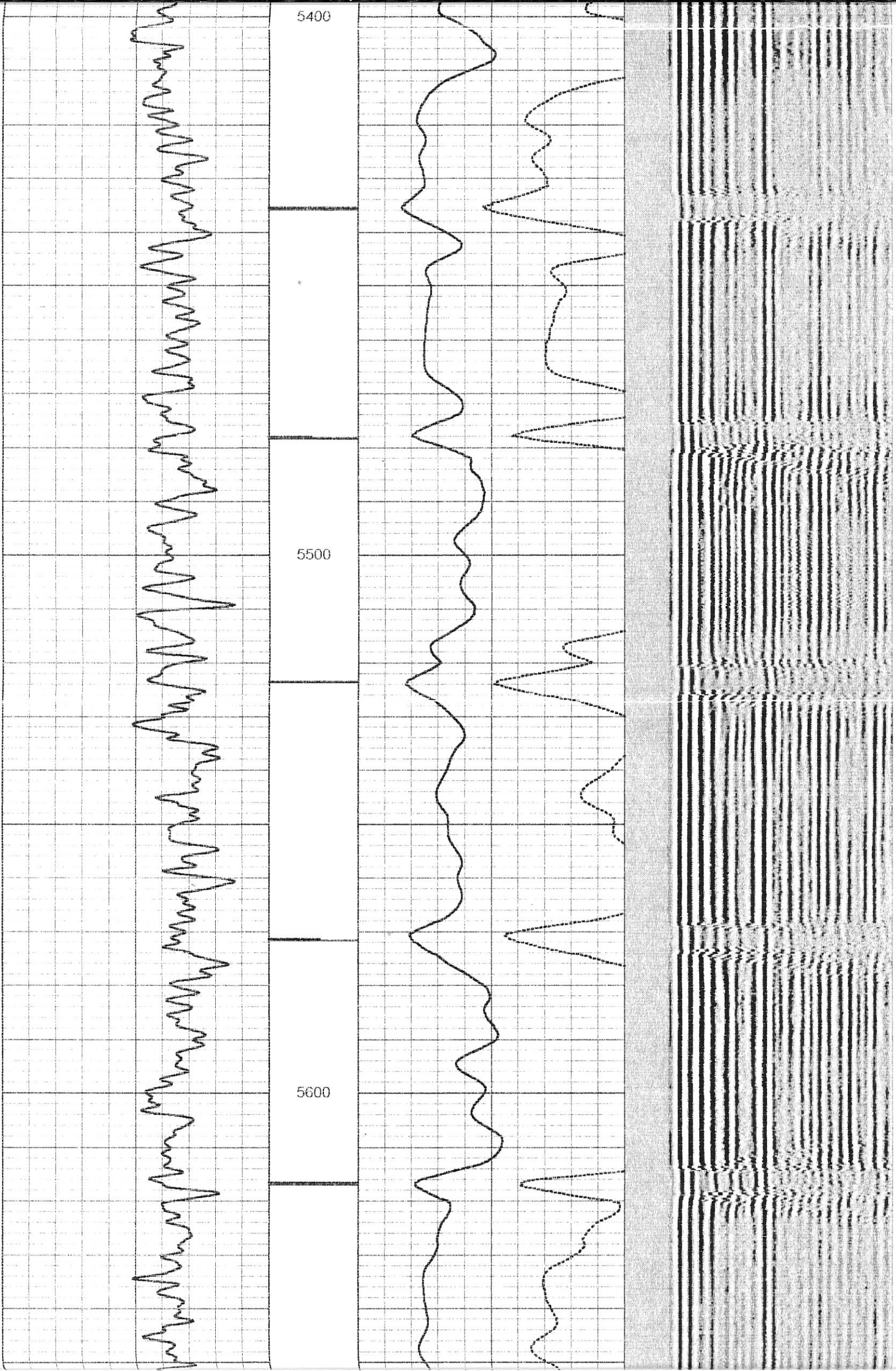


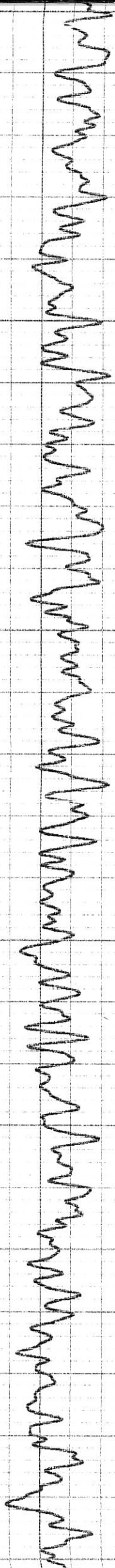
5200

5300

5400



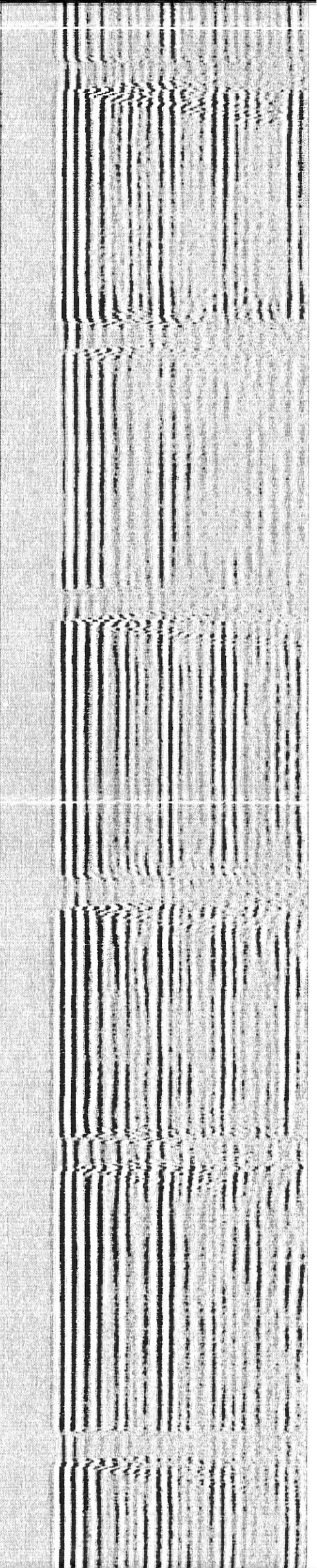
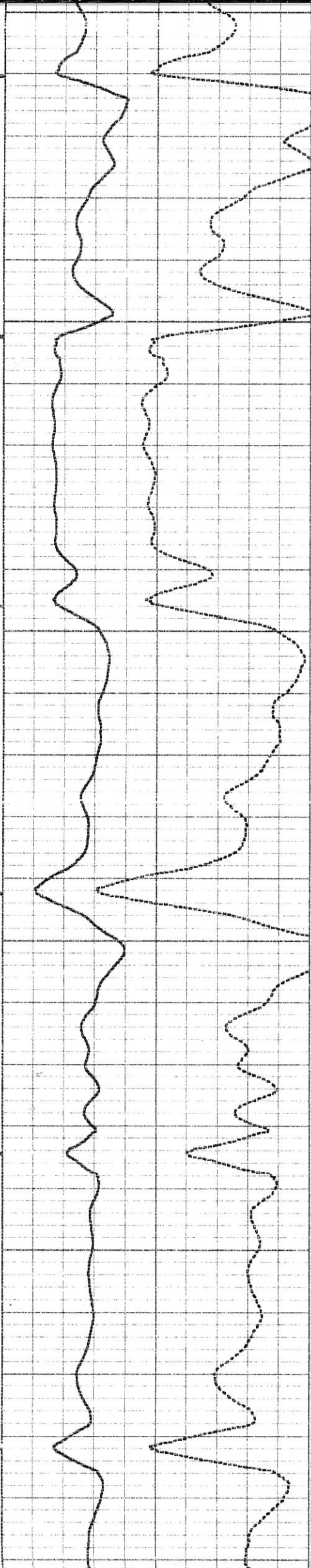


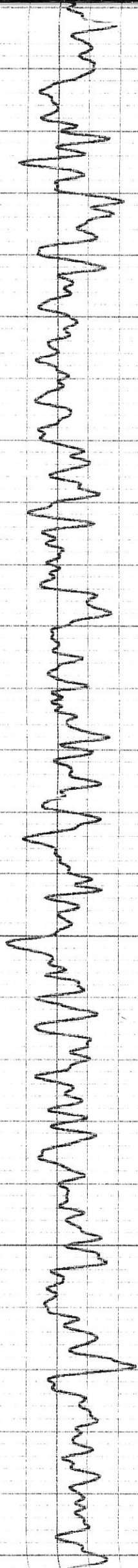


5700

5800

5900

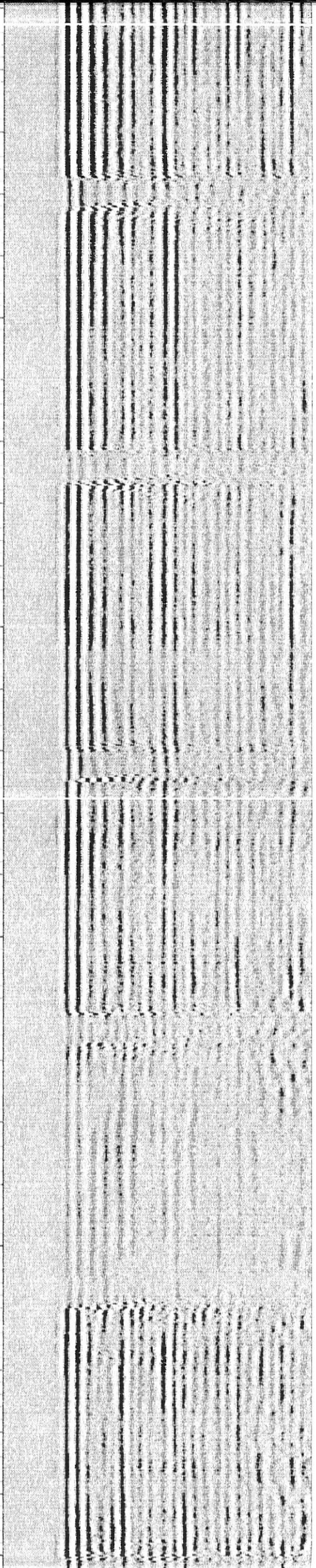
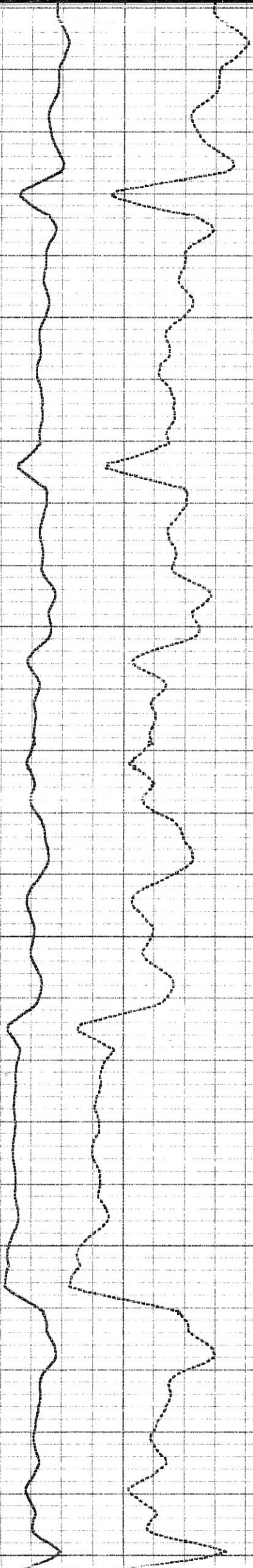




5900

6000

6100

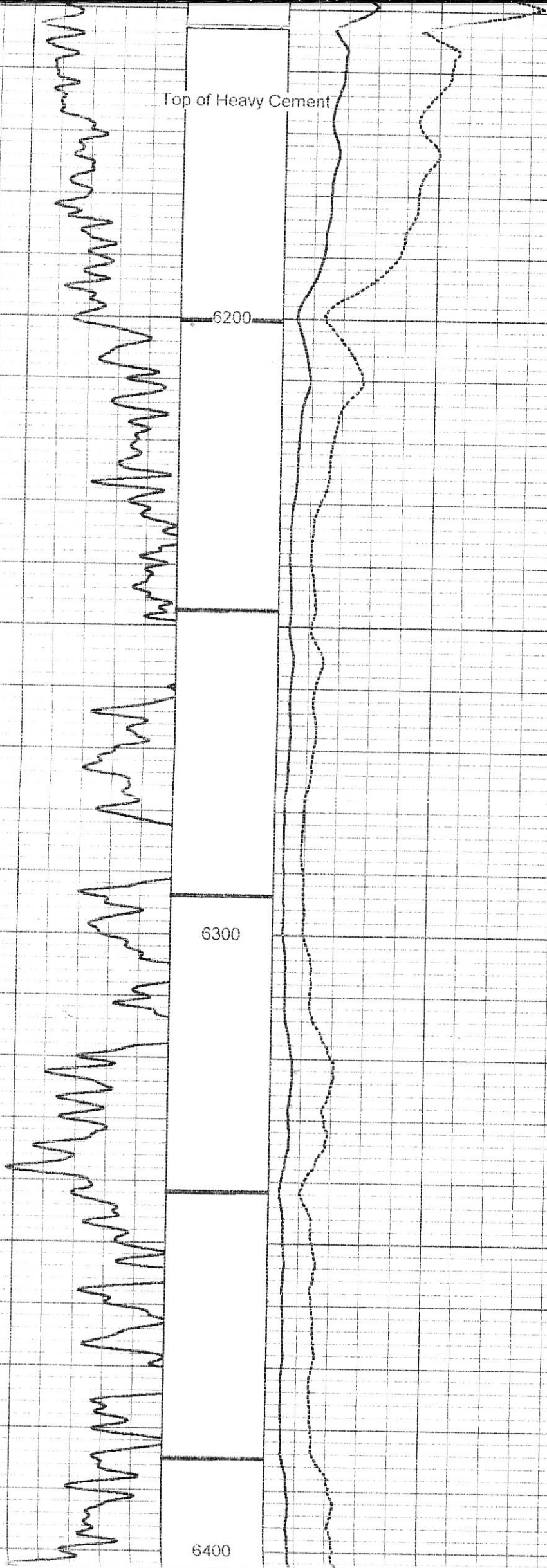


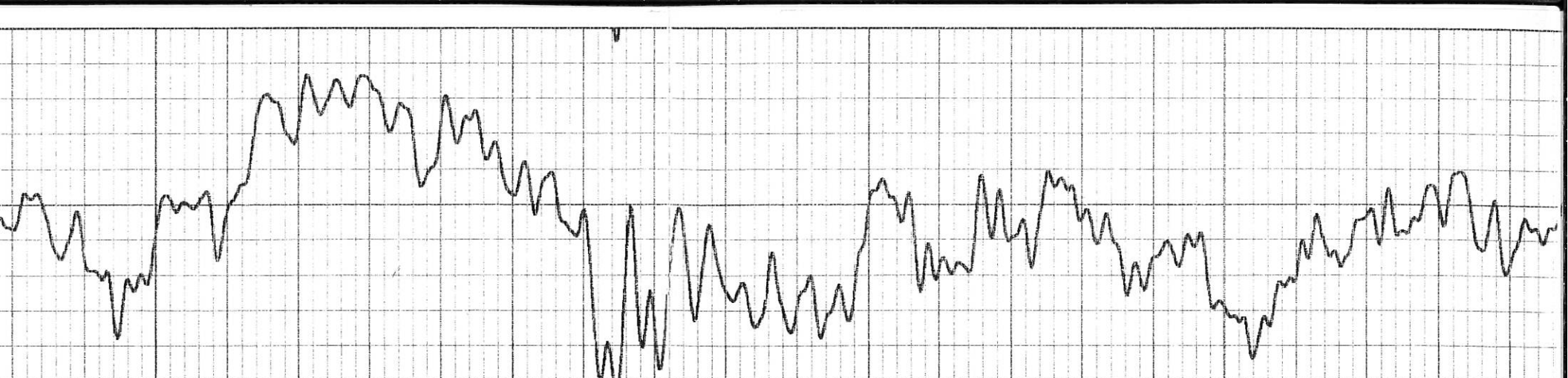
Top of Heavy Cement

6200

6300

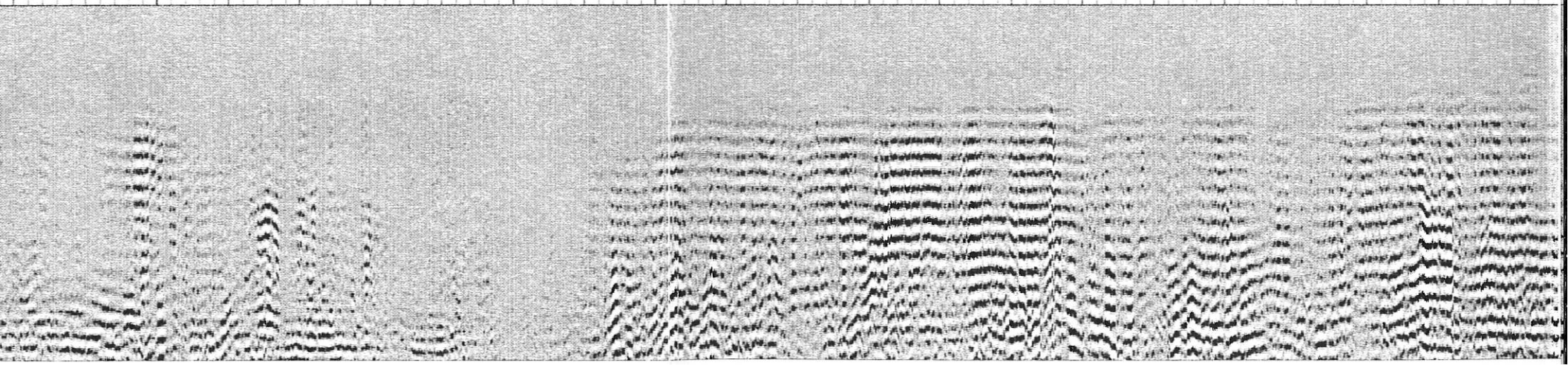
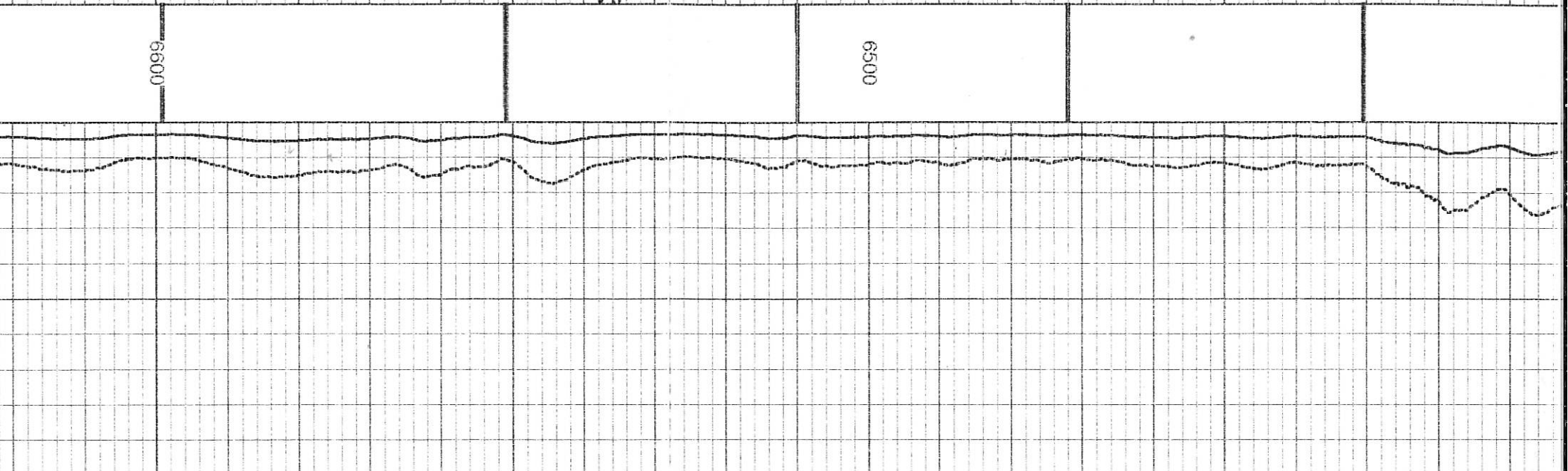
6400

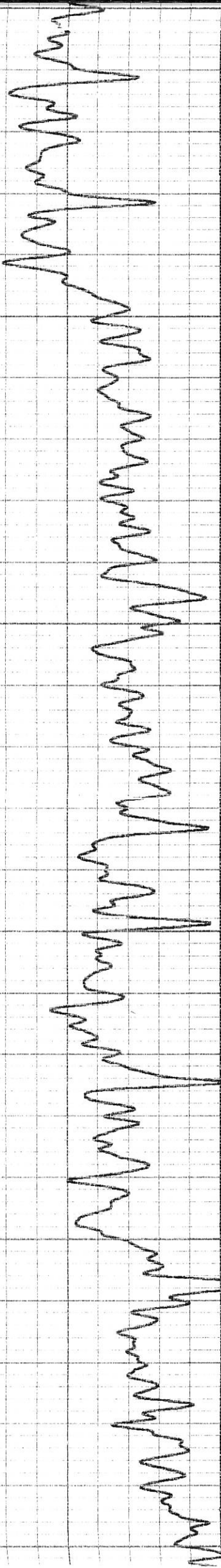




6600

6500





6700

6800

Marker Joint

6900

