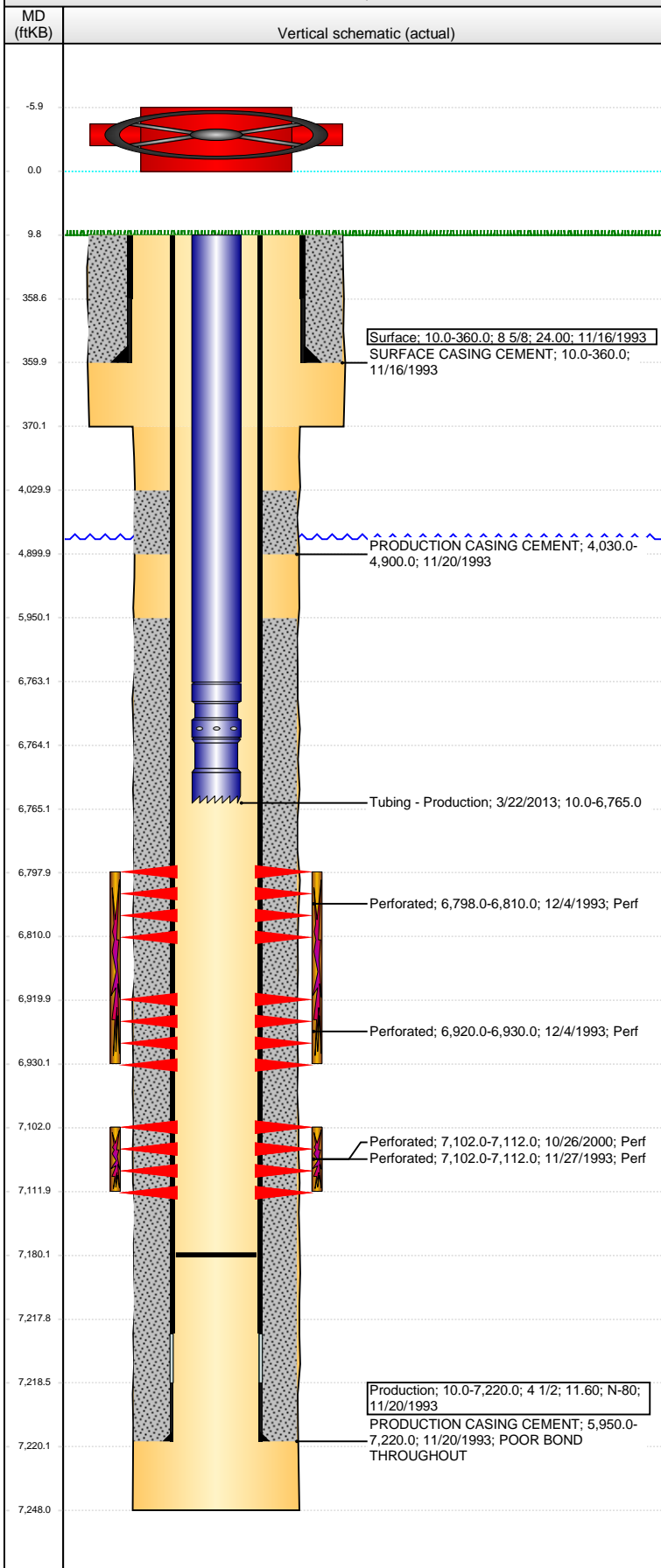


Wellbore Schematic Input Report

Well Name: WCL 5-8

VERTICAL - ORIGINAL HOLE, 5/2/2016 9:18:02 AM



Well Header

API	Business Unit	District	Well Config
05-123-17486	DJ BASIN	15	VERTICAL
Original KB Elevation (ft)	KB - GL / MSL (ftKB)	Spud Date	P & A Date
4,688	10.00	11/16/1993	
Comment			
SURFACE CASING DISCREPANCY - SCHEMATIC=360', ST RPT=351'			
Directions To Well			

Congressional Location

Quarter 1	Quarter 2	Quarter 3	Quarter 4	Section	Township	Twnshp N...	Range	Rng E/W Dir
		SE	NE	5	4	N	65	W

Bottom Hole Location

North-South Distance (ft)	From N or S Line	East-West Distance (ft)	From E or W Line

Plug Back Total Depths

Date	Depth (ftKB)	Method	Com
11/26/1993	7,170.0	CASED HOLE LOG	DEPTH LOGGER
3/9/1997	7,183.0	TAG	C/O TO RUN TBG
11/29/2011	7,180.0	TAG	CIRCULATED CLEAN FROM 7130' TO 7180'

Wellbore Sections

Section Des	Size (in)	Act Top, MD (ftKB)	Act Btm, MD (ftKB)
SURFACE	12 1/4	10.0	370.0
PRODUCTION	7 7/8	370.0	7,248.0

Zone Statuses

Zone Name	Status Date	Status	Fluid Type	Job	Prod Method
NIOBRARA	12/10/1993	PR		DRILLING/CO...	
CODELL	12/10/1993	PR		DRILLING/CO...	
CODELL	11/9/2000	PR		RE-FRAC, 10/2...	

Casing Strings

Surface, 360.0ftKB

Casing Description	Run Date	OD (in)	Wt/Len (l...	Grade	Top, MD (ft...	MD (ftKB)
Surface	11/16/1993	8 5/8	24.00		10.0	360.0

Production, 7,220.0ftKB

Casing Description	Run Date	OD (in)	Wt/Len (l...	Grade	Top, MD (ft...	MD (ftKB)
Production	11/20/1993	4 1/2	11.60	N-80	10.0	7,220.0

Cement

Description	Top Depth (ftKB)	Bottom Depth (ftKB)
SURFACE CASING CEMENT	10.0	360.0
Description	Top Depth (ftKB)	Bottom Depth (ftKB)
PRODUCTION CASING CEMENT	4,030.0	4,900.0
Description	Top Depth (ftKB)	Bottom Depth (ftKB)
PRODUCTION CASING CEMENT	5,950.0	7,220.0

Tubing Strings

Tubing Description	Run Date	String...	ID (in)	Wt (lb/ft)	Grade	Len (ft)	Set De...
Tubing - Production	3/22/2013	2 3/8	1.995	4.70	J-55	6,755.00	

Tubing Components

Item Des	OD (in)	Wt (lb/ft)	Grade	Jts	Len (ft)	Btm (ftKB)	Btm (TVD) (ftKB)
Tubing	2 3/8	4.70	J-55	213	6,753.00	6,763.0	
Seating Nipple	2 3/8	1.10		1	1.00	6,764.0	
Notched collar	2 3/8			1	1.00	6,765.0	

Perforation Data

Zone	Bnch/St g	Entered Shot Total	Top (ftKB)	Btm (ftKB)	Date
NIOBRARA, ORIGINAL HOLE	A	6	6,798.00	6,810.00	12/4/1993
NIOBRARA, ORIGINAL HOLE	B	10	6,920.00	6,930.00	12/4/1993
CODELL, ORIGINAL HOLE			7,102.00	7,112.00	11/27/1993
CODELL, ORIGINAL HOLE			7,102.00	7,112.00	10/26/2000

Stimulations & Treatments

Date	Zone	Primary Job Type
11/30/1993	CODELL, ORIGINAL HOLE	DRILLING/COMPLETION - ORIGINAL
Technical Result	Tech Result Details	Tech Result Note
Comment		

Well Name: WCL 5-8

VERTICAL - ORIGINAL HOLE, 5/2/2016 9:18:04 AM

Stimulations & Treatments

Date	Zone	Primary Job Type
12/8/1993	NIOBRARA, ORIGINAL HOLE	DRILLING/COMPLETION - ORIGINAL

Technical Result	Tech Result Details	Tech Result Note

Comment

Date	Zone	Primary Job Type
11/1/2000	CODELL, ORIGINAL HOLE	RE-FRAC

Technical Result	Tech Result Details	Tech Result Note

Comment

Other In Hole

Run Date	Des	OD (in)	Top (ftKB)	Btm (ftKB)

Logs

Date	Type	Top, MD (ftKB)	Btm, MD (ftKB)
11/26/1993	CEMENT BOND	3,500.0	7,164.0

