

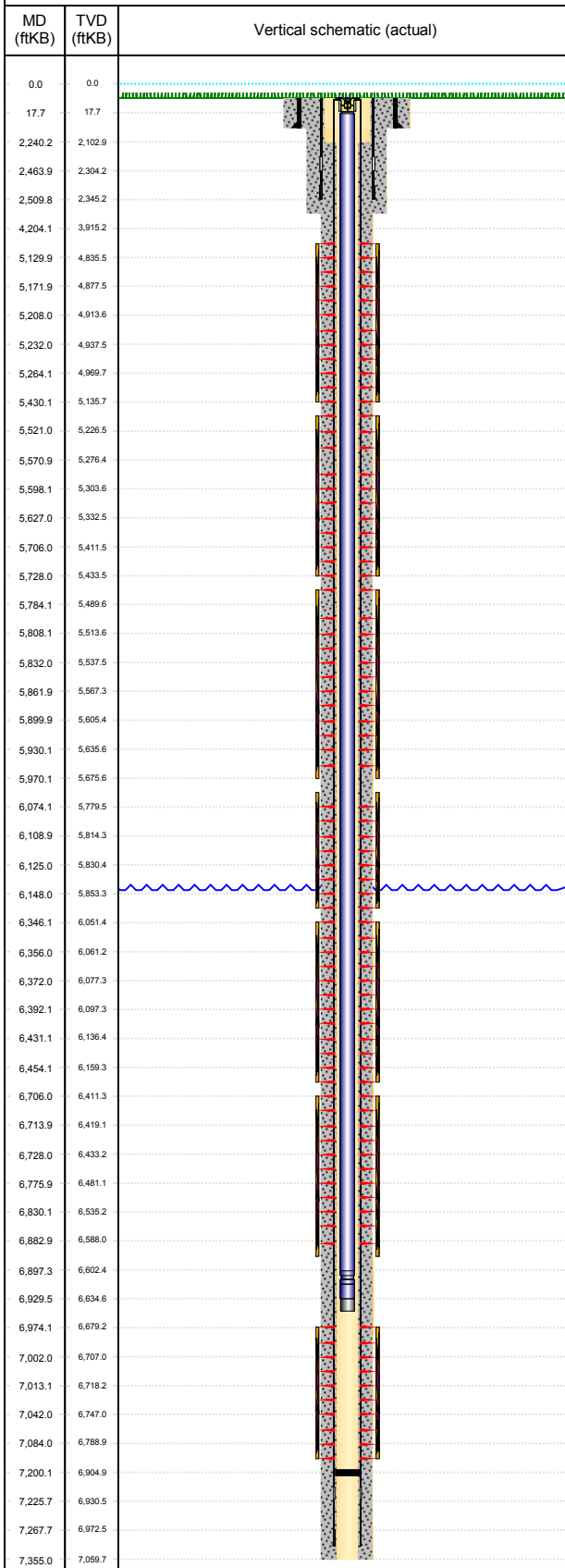


Regulatory Schematic - Current

Well Name: CHEVRON 18-444D

API/UWI 05045110380000	Field Name PCNC - AREA A - GARDEN GULCH	County Garfield	State/Province CO	Section 20	Township 006-S	Range 096-W	Survey	Block
Ground Elevation (ft) 5,830.00	Orig KB Elev (ft) 5,847.00	KB-Grd (ft) 17.00	Initial Spud Date 12/20/2005	Rig Release Date 1/6/2006	TD Date 1/3/2006	Latitude (°)	Longitude (°)	Operated? Yes

TD: 7,355.00 Well - Original Hole, 4/29/2016 2:32:07 PM



Wellbores						
Wellbore Name Original Hole			Parent Wellbore Original Hole		Wellbore API/UWI 050451103800	
Section Des	Size (in)	Act Top (ftKB)	Act Btm (ftKB)	Act Top (TVD) (ftKB)	Act Btm (TVD) (ftKB)	
Conductor	20	17.0	90.0	17.0	90.0	
Surface	12 1/4	90.0	2,535.0	90.0	2,367.7	
Production	7 7/8	2,535.0	7,355.0	2,367.7	7,059.7	
Casing Strings						
Casing Description	OD (in)	Wt/Len (lb/ft)	String Grade	Top Connection	Set Depth (ftKB)	
Conductor	16	109.00	C-75		90.0	
Casing Description	OD (in)	Wt/Len (lb/ft)	String Grade	Top Connection	Set Depth (ftKB)	
Surface	8 5/8	32.00	J-55		2,510.0	
Casing Description	OD (in)	Wt/Len (lb/ft)	String Grade	Top Connection	Set Depth (ftKB)	
Production	4 1/2	11.60	N-80	LT&C	7,269.0	
Cement Stages						
Description	Type	Top (ftKB)	Btm (ftKB)	Top (TVD) (...)	Btm (TVD) (...)	
Conductor Cement	Casing	17.0	90.0	17.0	90.0	
Fluid	Class	Yield (ft ³ /sack)	Dens (lb/gal)	Amount (sacks)		
Lead				350		
Description	Type	Top (ftKB)	Btm (ftKB)	Top (TVD) (...)	Btm (TVD) (...)	
Surface Casing Cement	Casing	17.0	2,535.0	17.0	2,367.7	
Fluid	Class	Yield (ft ³ /sack)	Dens (lb/gal)	Amount (sacks)		
Lead	35/65 POZ/G	1.93	12.70	710		
Tail	G	1.17	15.80	300		
Description	Type	Top (ftKB)	Btm (ftKB)	Top (TVD) (...)	Btm (TVD) (...)	
Production Casing Cement	Casing	2,240.0	7,355.0	2,102.7	7,059.7	
Fluid	Class	Yield (ft ³ /sack)	Dens (lb/gal)	Amount (sacks)		
Lead	35:65		12.70	350		
Tail	HMS		13.50	1,015		
Perforations						
Date	Top (ftKB)	Btm (ftKB)	Linked Zone			
3/22/2006	5,128.0	5,430.0	WILLIAMS FORK			
3/21/2006	5,519.0	5,728.0	WILLIAMS FORK			
3/17/2006	5,783.0	5,970.0	WILLIAMS FORK			
3/17/2006	6,026.0	6,150.0	WILLIAMS FORK			
3/16/2006	6,346.0	6,456.0	WILLIAMS FORK			
3/15/2006	6,706.0	6,884.0	WILLIAMS FORK			
3/14/2006	6,974.0	7,086.0	WILLIAMS FORK			
Tubing Strings						
Tubing Description	Run Date	String Length (ft)	Set Depth (ftKB)			
Tubing - Production	4/14/2006	6,913.05	6,930.0			
Item Des	Jts	Model	OD (in)	Wt (lb/ft)	Grade	Len (ft)
Tubing Hanger	1		2.375			0.90
Tubing	219		2.375		N-80	6,879.50
F-Nipple	1		2.375			1.10
Tubing	1		2.375		N-80	30.90
Pump off Bit Sub	1		2.375			0.65
Other In Hole						
Description	Run Date	OD (in)	ID (in)	Equipment Type	Top (ft...)	Btm (ft...)
Zones						
Zone Name					Top (ftKB)	
WILLIAMS FORK					4,204.0	
ROLLINS					7,244.0	
Plug Back Total Depths						
Date	Type	Depth (ftKB)	Depth (TVD)...	Comment		
3/10/2006		7,200.0	6,904.8	PBSD, Estimated Date		