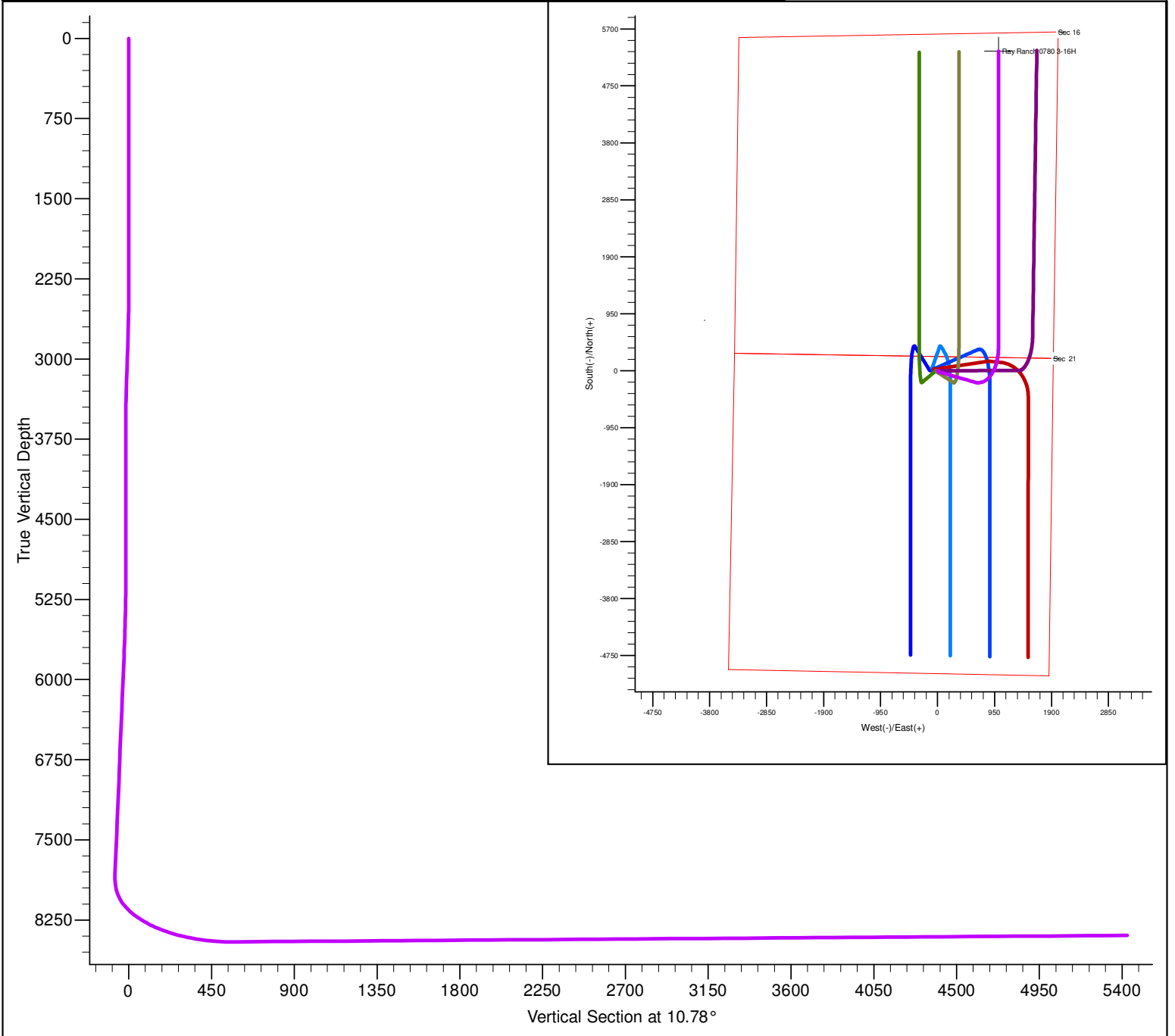


PROJECT DETAILS: North Park Basin										<div><div><div><div></div><div>G</div></div><div><div></div><div>T</div></div><div><div></div><div>M</div></div></div><div><div></div></div></div> <div><div>Azimuths to Grid North</div><div>True North: 0.57°</div><div>Magnetic North: 10.44°</div><div>Magnetic Field</div><div>Strength: 53183.9snT</div><div>Dip Angle: 66.97°</div><div>Date: 12/31/2009</div><div>Model: IGRF200510</div></div>			
Geodetic System: US State Plane 1983 Datum: North American Datum 1983 Ellipsoid: GRS 1980 Zone: Colorado Northern Zone System Datum: Mean Sea Level													
FORMATION TOP DETAILS												CASING DETAILS	
TVDPPath		MDPath		Formation		DipAngle		DipDir		No casing data is available			
6500.0		6535.2		Shannon		0.00							
7902.0		7986.3		Niobrara		0.00							
DESIGN DETAILS: Design #1												Project: North Park Basin Site: T7N-R80W-S21 Well: Ray Ranch 0780 3-16H Wellbore: Wellbore #1 Design: Design #1	
0' Vertical Section coordinates													
Type	Target	Azimuth	Origin	Type	N/S	E/W	From	TVD					
Target		10.78	Slot		0.0	0.0		0.0					



SECTION DETAILS											
Sec	MD	Inc	Azi	TVD	+N/-S	+E/-W	Dleg	TFace	VSect	Target	
1	0.0	0.00	0.00	0.0	0.0	0.0	0.00	0.00	0.0		
2	2500.0	0.00	0.00	2500.0	0.0	0.0	0.00	0.00	0.0		
3	2588.9	1.78	135.00	2588.9	-1.0	1.0	2.00	135.00	-0.8		
4	3411.5	1.78	135.00	3411.1	-19.0	19.0	0.00	0.00	-15.1		
5	3500.4	0.00	0.00	3500.0	-20.0	20.0	2.00	180.00	-15.9		
6	5000.4	0.00	0.00	5000.0	-20.0	20.0	0.00	0.00	-15.9		
7	5743.1	14.85	105.95	5734.3	-46.3	112.0	2.00	105.95	-24.5		
8	7925.7	14.85	105.95	7844.1	-200.0	650.0	0.00	0.00	-74.9		
9	8162.9	35.00	73.30	8058.9	-188.6	745.7	10.00	-50.30	-45.8		
10	8973.8	90.70	0.00	8454.4	382.3	1015.0	10.00	-75.80	565.4	Ray Ranch 3 Target	
11	13922.6	90.70	0.00	8394.0	5330.7	1015.2	0.00	0.00	5426.5	Ray Ranch 3 Target	