

T7N, R80W, 6th P.M.

RAY RANCH 0780 1-16H

GL0 Brass Cap 1939
N=1451727.96, E=2758595.77 Elev. = 8223'

Sandridge Exploration & Production, LLC

Surface Location, RAY RANCH 0780 1-16H located as shown in the NW1/4NE1/4 of Section 21, T7N, R80W, 6th P.M., Jackson County, Colorado.

BASIS OF BEARINGS:

US STATE PLANE 1983
CO NORTH 0501 GRID

BASIS OF ELEVATION

SPOT ELEVATION AT THE NE CORNER OF SECTION 21, T7N, R80W, 6TH PM, TAKEN FROM THE COALMONT QUADRANGLE, USGS 7.5 MIN QUAD (TOPOGRAPHIC MAP) WITH SAID ELEVATION MARKED AS BEING 8223 FEET.

SURFACE USE

AGRICULTURAL/GRAZING

GRAPHIC SCALE 1"=1000'

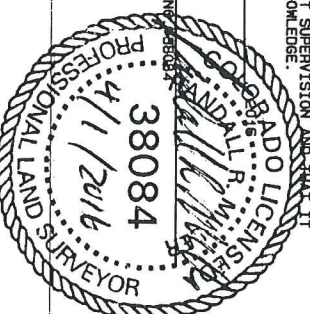
1000 0 1000



I RANDALL R. MILLER, BEING A REGISTERED LAND SURVEYOR IN THE STATE OF COLORADO, DO HEREBY CERTIFY THAT THIS PLAT WAS MADE BY ME AND/OR UNDER MY DIRECT SUPERVISION AND THAT IT IS ACCURATE TO THE BEST OF MY KNOWLEDGE.

DATED THIS _____ DAY OF _____

RANDALL R. MILLER, COLORADO PLS. NO. 258084



LEGEND

90° SYMBOL
FOUND CORNER
PROPOSED WELL
PROPOSED BHL/LPL

NAD 83 (SURFACE LOCATION)	
LATITUDE=40.569537°N	PDOP=2.125
LONGITUDE=106.376011°W	
NAD 83 (LANDING POINT LOCATION)	
LATITUDE=40.571062°N	
LONGITUDE=106.377274°W	

NORTH PARK ENGINEERING & CONSULTING, INC.

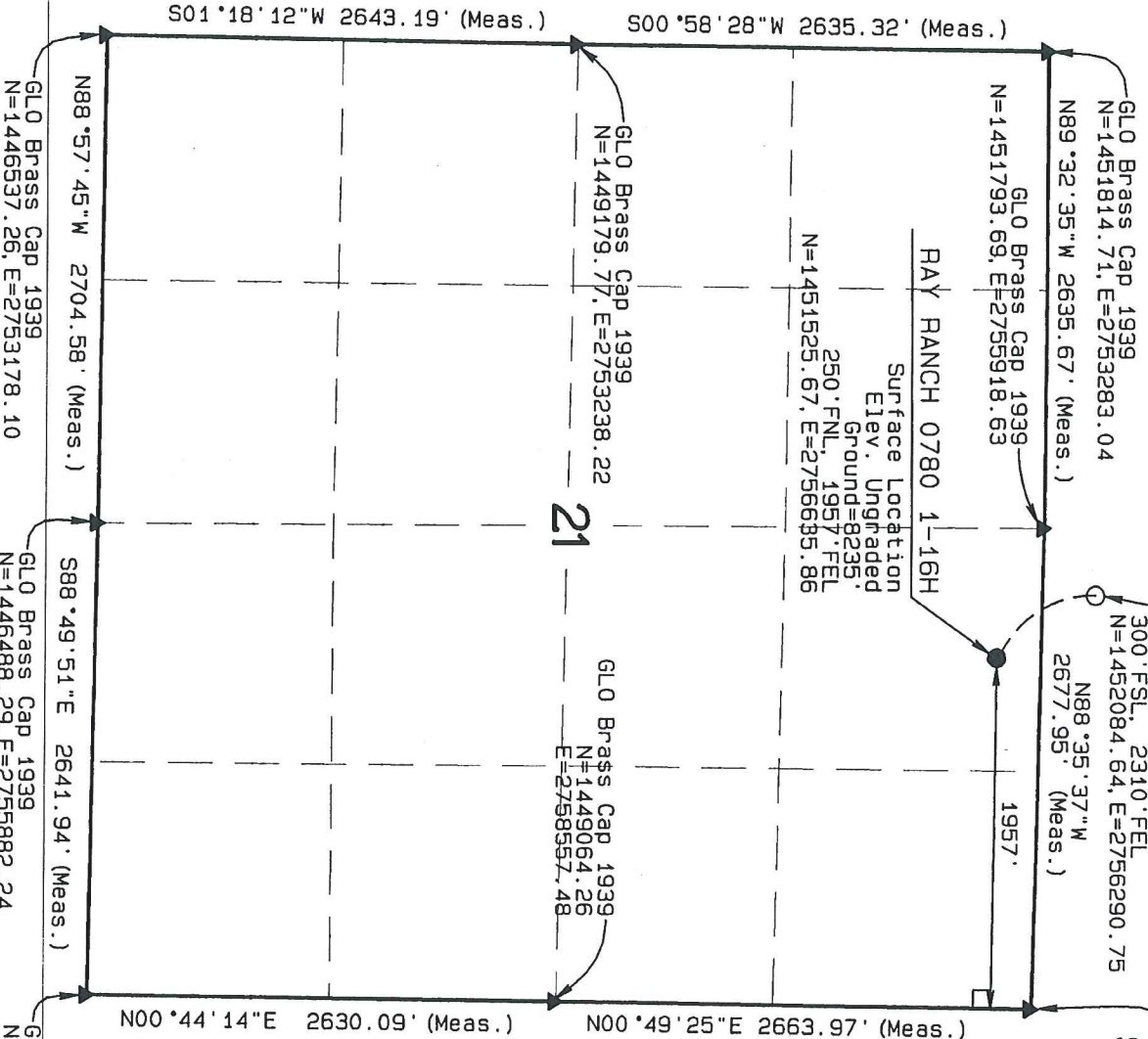
P.O. BOX 395
WALDEN, CO 80480
(970) 723-3725

DATE OF FIELD WORK: JUL 22, 2015 DRAWING COMPLETION: MAR 30, 2016

SURVEYED BY: RAS

DRAWN BY: TMM

CHECKED BY: RRM



T7N, R80W, 6th P.M.

Aluminum Cap PLS 38084
N=1457126.92, E=2756016.35

GL0 Brass Cap 1939
PLS 17492 2008
N=1457081.47, E=2753355.52

GL0 Brass Cap 1939
N=1457172.68, E=2758675.95

N89°01'04"E 2660.60' (Meas.)

Target Bottom Hole, RAY RANCH 0780 1-16H Located as shown in the NW1/4NE1/4 of Section 16, T7N, R80W, 6th P.M., Jackson County, Colorado.

SandRidge Exploration & Production, LLC

BASIS OF BEARINGS:

US STATE PLANE 1983
CO NORTH 0501 GRID

BASIS OF ELEVATION

SPOT ELEVATION AT THE NE CORNER OF SECTION 21, T7N, R80W, 6TH PM, TAKEN FROM THE COALMONT QUADRANGLE, USGS 7.5 MIN QUAD (TOPOGRAPHIC MAP) WITH SAID ELEVATION MARKED AS BEING 8223 FEET.

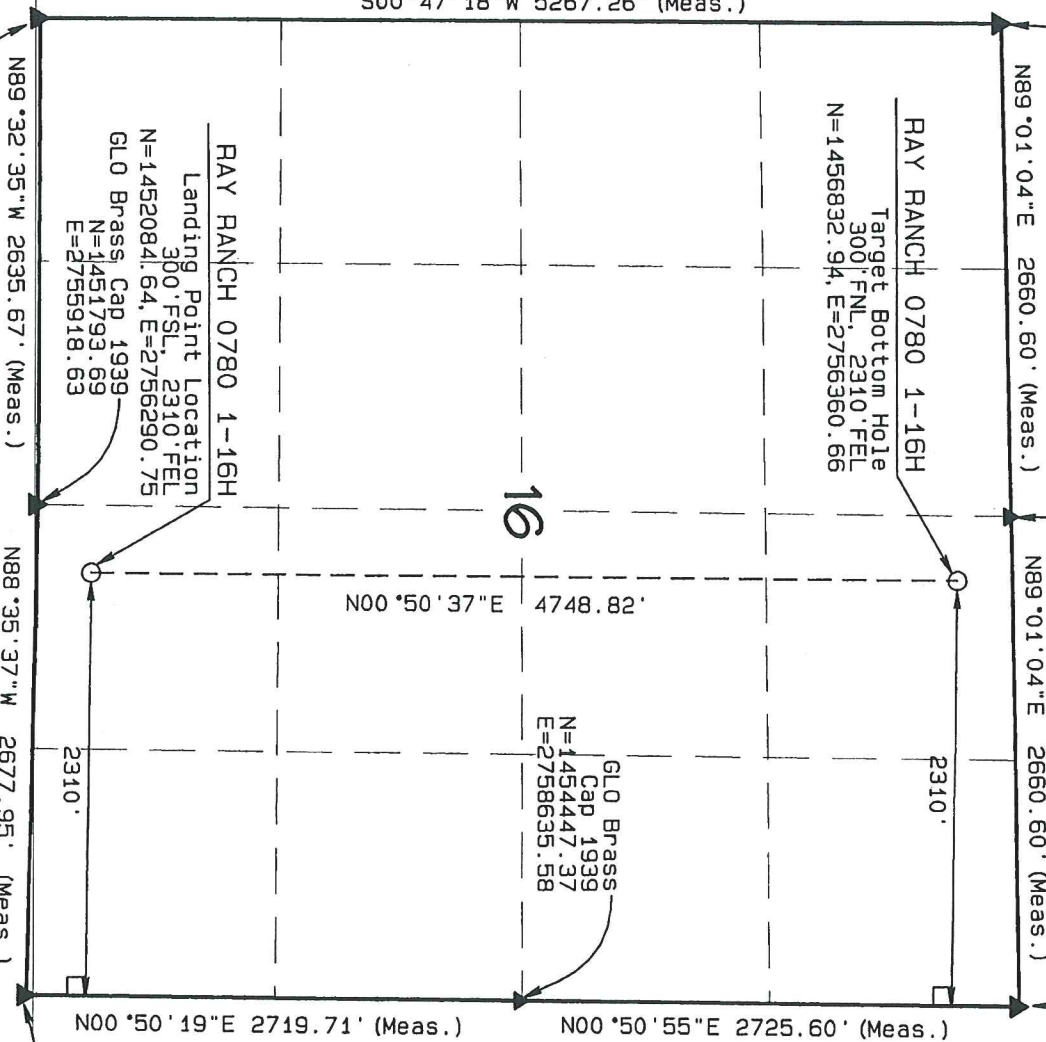
SURFACE USE

AGRICULTURAL/GRAZING

GRAPHIC SCALE 1"=1000'



500°47'18"W 5267.26' (Meas.)



GL0 Brass Cap 1939
N=1451814.71, E=2753283.04

N88°35'37"W 2677.95' (Meas.)

GL0 Brass Cap 1939
N=1451727.96, E=2758595.77 Elev

LEGEND

90° SYMBOL
FOUND CORNER
PROPOSED WELL
PROPOSED BHL/LPL

NAD 83 (TARGET BOTTOM HOLE)
LATITUDE=40.58497°N
LONGITUDE=106.377191°W

NAD 83 (SURFACE LOCATION)
LATITUDE=40.569537°N
LONGITUDE=106.376011°W
PDOP=2.125

NORTH PARK ENGINEERING & CONSULTING, INC.
P.O. BOX 395
WALDEN, CO 80480
(970) 723-3725
DATE OF FIELD WORK: JUL 22, 2015
DRAWING COMPLETION: MAR 30, 2016
SURVEYED BY: RAS
DRAWN BY: THH
CHECKED BY: RHM

I, RANDALL R. MILLER, BEING A REGISTERED LAND SURVEYOR IN THE STATE OF COLORADO, DO HEREBY CERTIFY THAT THE FOREGOING WAS MADE BY ME AND/OR UNDER MY DIRECT SUPERVISION AND THAT IT IS ACCURATE TO THE BEST OF MY KNOWLEDGE.

DATED THIS _____ DAY OF _____

RANDALL R. MILLER, COLORADO PLS. #38084

