



Lat40°, Inc. 6250 W. 10th Street, Unit 2, Greeley, CO 970-515-5294

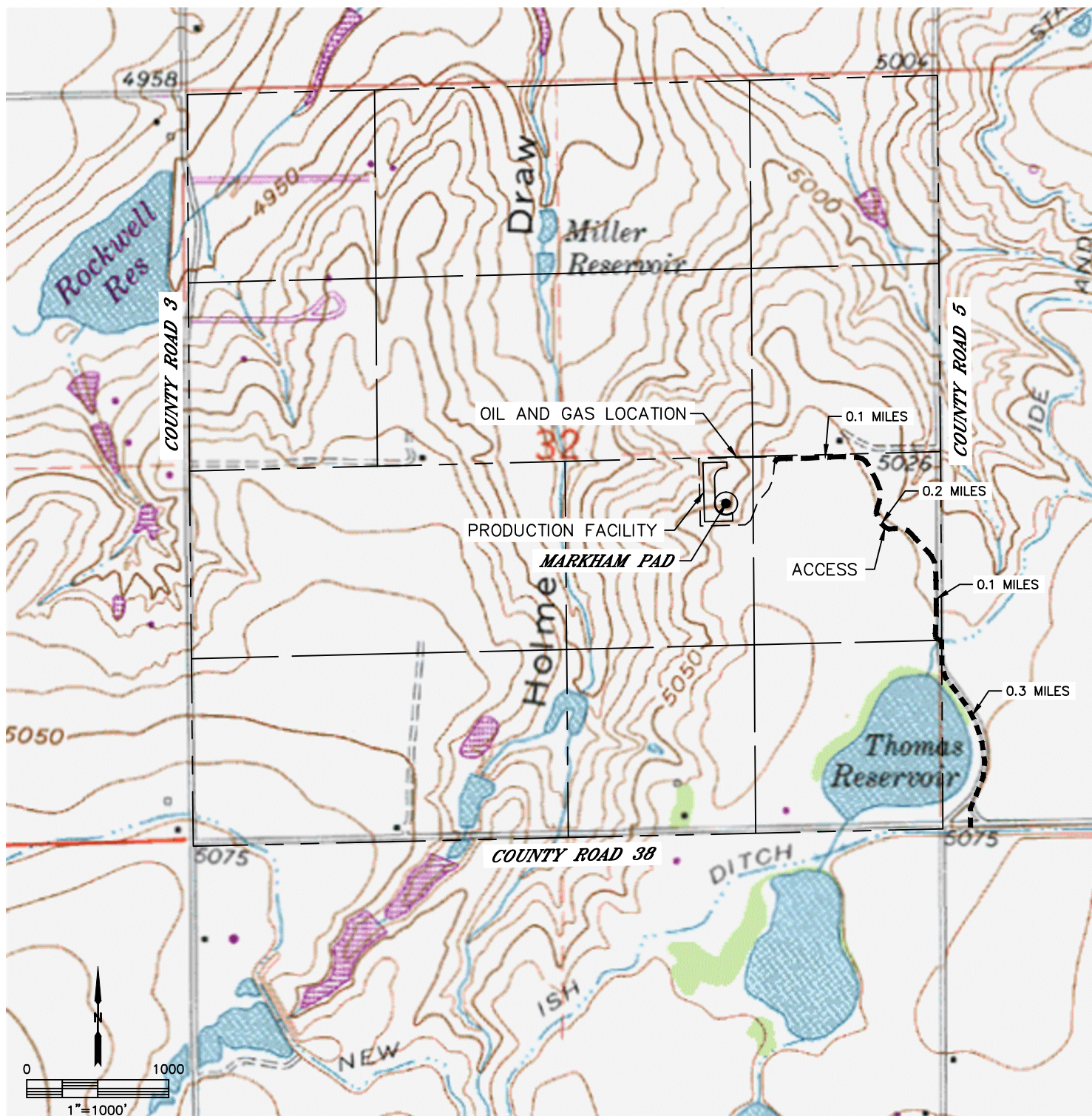
ACCESS ROAD MAP

MARKHAM PAD

SECTION: 32
TOWNSHIP: 4N
RANGE: 68W
6TH. P.M.
WELD COUNTY, CO

DRIVING DIRECTIONS TO MARKHAM PAD:

FROM THE INTERSECTION OF COUNTY ROAD 5 AND COUNTY ROAD 38, DRIVE NORTH ALONG COUNTY ROAD 5 FOR 0.3 MILES TO AN EXISTING DRIVEWAY, THENCE TURN WEST ON EXISTING ROAD AND TAKE IMMEDIATE NORTH TURN ONTO EXISTING ACCESS ROAD, THENCE DRIVE NORTH FOR 0.1 MILES, THENCE NORTHWEST FOR 0.2 MILES, THENCE WEST FOR 0.1 MILES TO THE MARKHAM DRILL PAD AND PRODUCTION FACILITY.



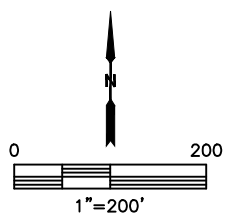
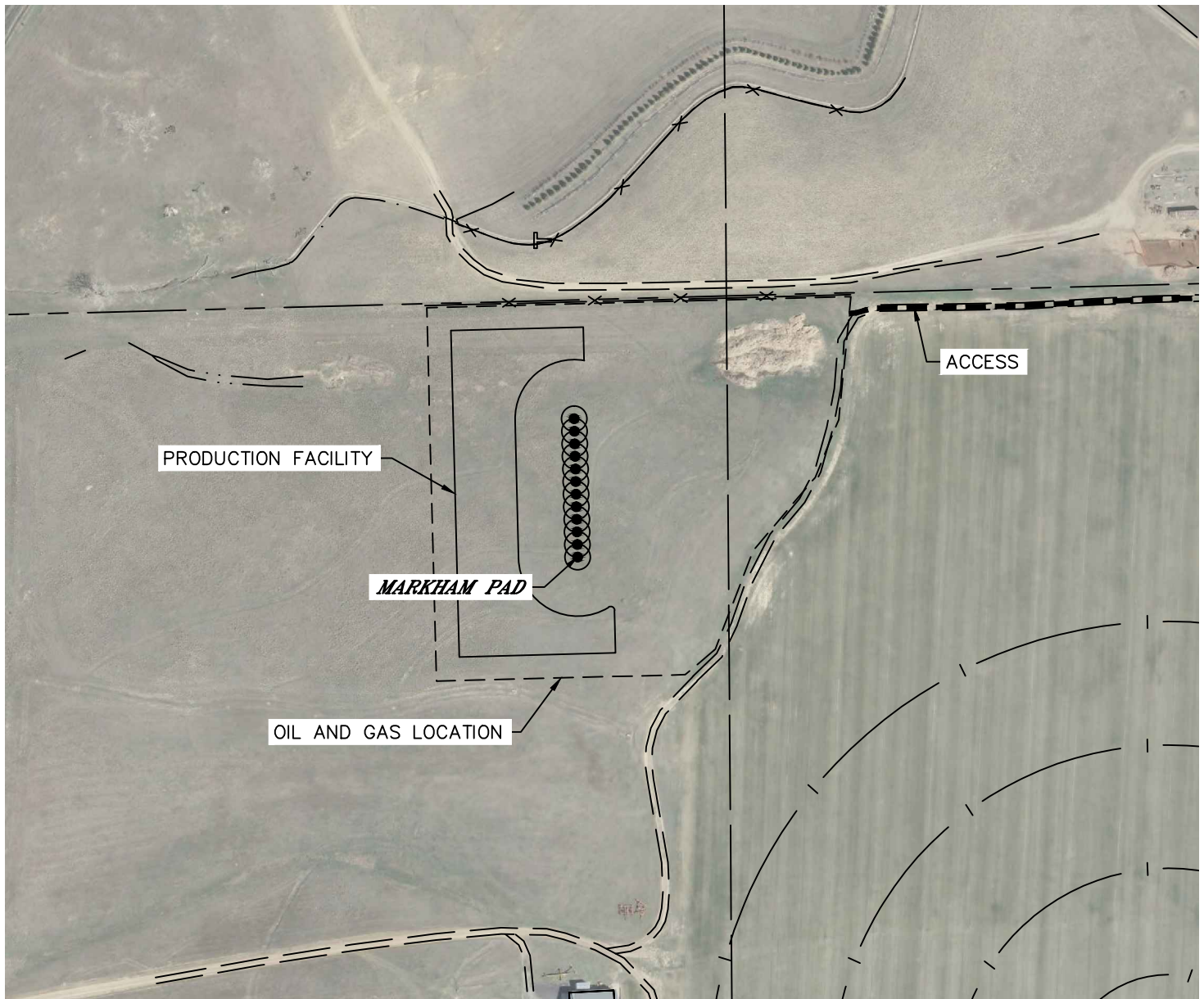


Lat40°, Inc. 6250 W. 10th Street, Unit 2, Greeley, CO 970-515-5294

ACCESS ROAD MAP

MARKHAM PAD

SECTION: 32
TOWNSHIP: 4N
RANGE: 68W
6TH. P.M.
WELD COUNTY, CO



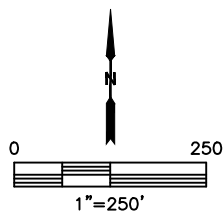
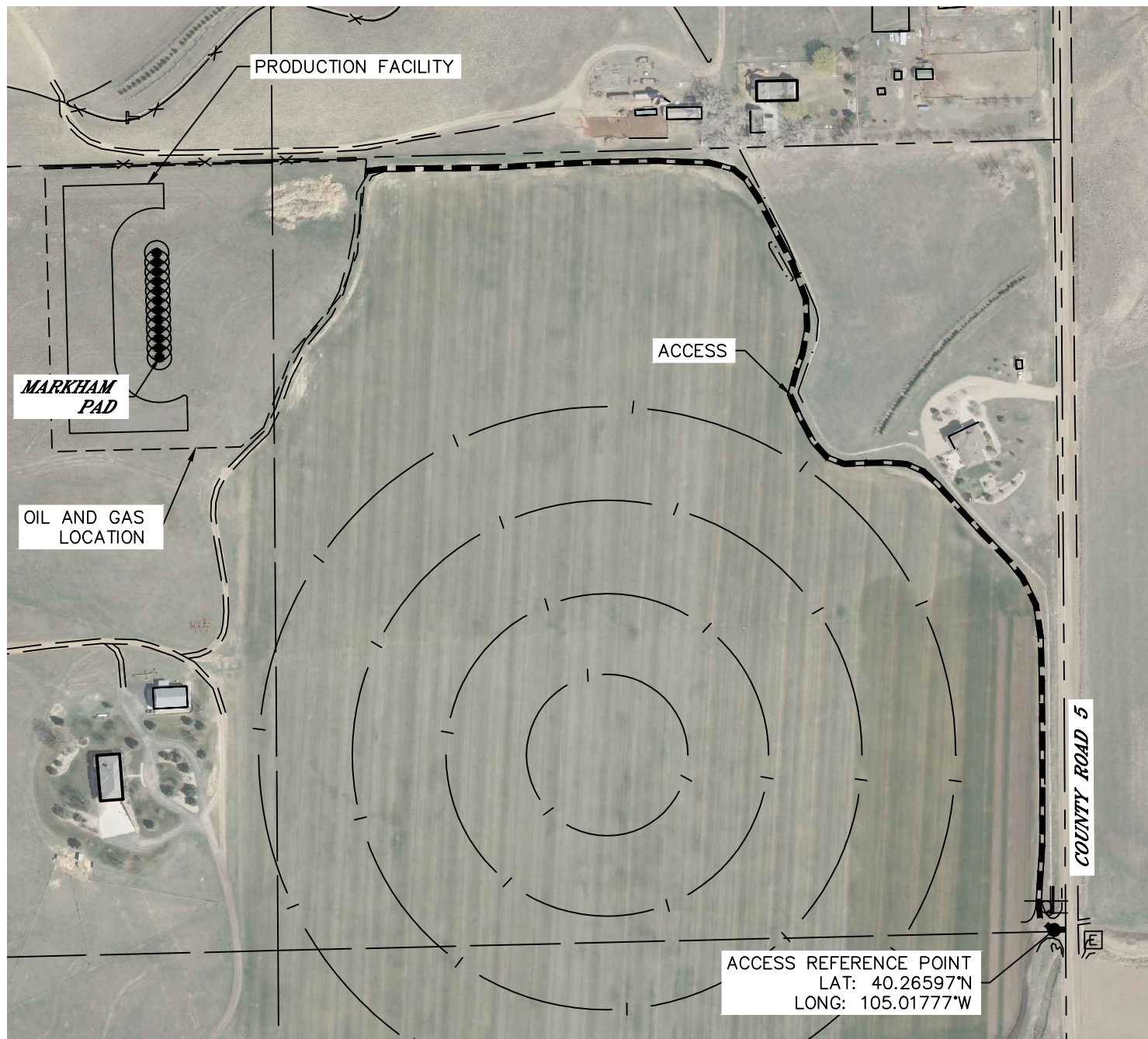


Lat40°, Inc. 6250 W. 10th Street, Unit 2, Greeley, CO 970-515-5294

ACCESS POINT MAP

MARKHAM PAD

SECTION: 32
TOWNSHIP: 4N
RANGE: 68W
6TH. P.M.
WELD COUNTY, CO



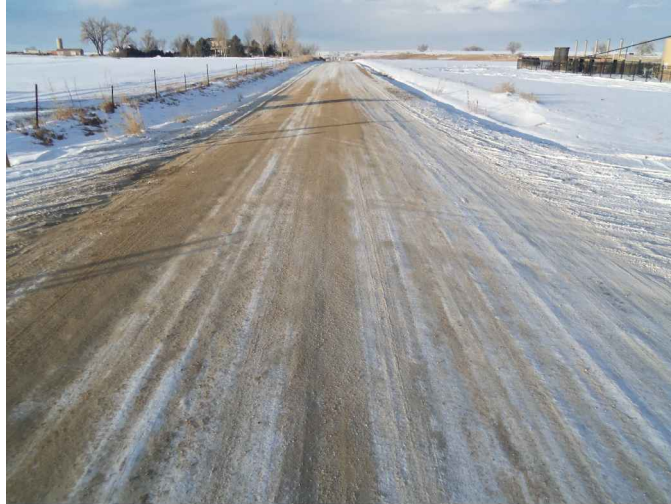


Lat40°, Inc. 6250 W. 10th Street, Unit 2, Greeley, CO 970-515-5294

ACCESS POINT PICTURES

MARKHAM PAD

SECTION: 32
TOWNSHIP: 4N
RANGE: 68W
6TH. P.M.
WELD COUNTY, CO
DATE: 12/30/2015



VIEW NORTH (CR 5)



VIEW WEST



VIEW SOUTH (CR 5)