

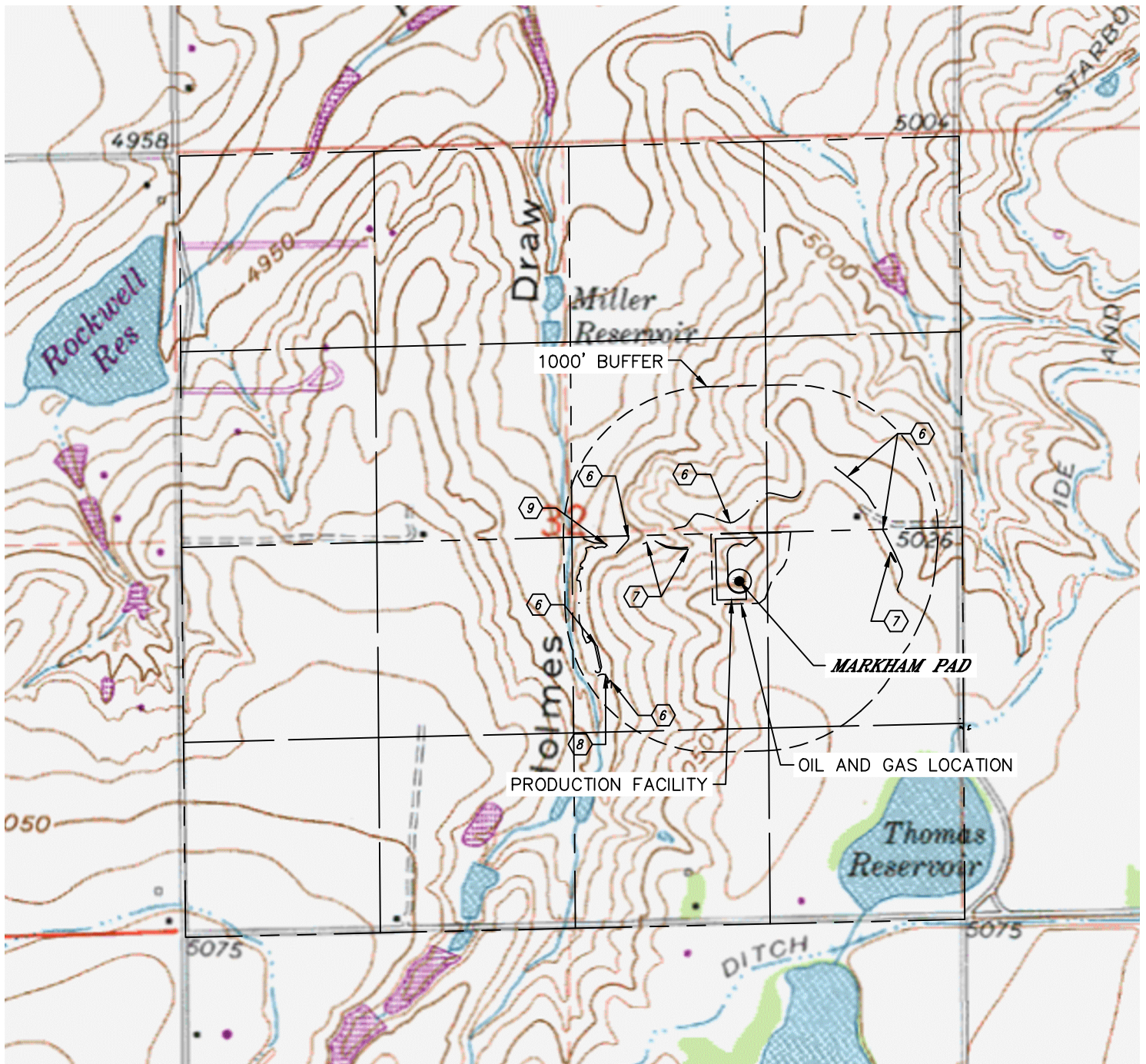


Lat40°, Inc. 6250 W. 10th Street, Unit 2, Greeley, CO 970-515-5294

HYDROLOGY MAP

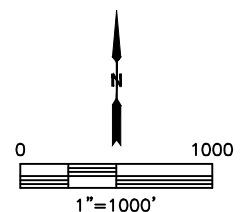
MARKHAM PAD

SECTION: 32
TOWNSHIP: 4N
RANGE: 68W
6TH. P.M.
WELD COUNTY, CO



DISTANCES MEASURED FROM THE EDGE OF THE OIL AND GAS LOCATION.

- ⑥ DITCH 77' N, 541' NE, 559' W, 626' E, 833' & 862' SW
- ⑦ LOW AREA 160' & 436' W, 685' SE
- ⑧ POND 868' SW
- ⑨ CANAL 707' W



DATE: 2/26/2016
PROJECT#: 2015177