

HRM - Stormwater and Erosion Overview Map



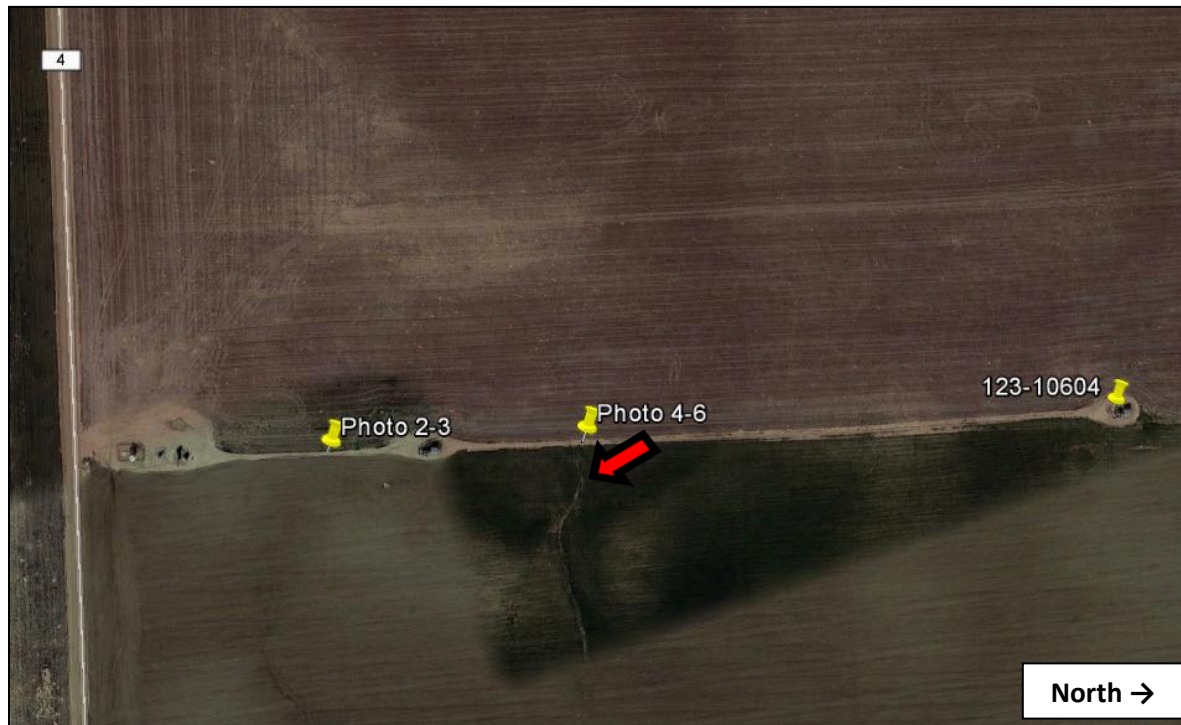


Photo 1: Aerial photo referencing locations of field photos taken on 4/19/16. Refer to Document# 682400496 for complete field photos from the 3/8/16 inspection.

Google Earth aerial photo illustrating that erosion and transport of sediment initiates on the lease road used for API# 123-10604, then travels east onto cropland.



Photo 2: Photo taken 4/19/16 south of well, facing South. This photo illustrates stormwater traveling along the path of the lease road.



Photo 3: Photo taken 4/19/16 south of well, facing North. This photo illustrates stormwater traveling along the path of the lease road.



Photo 4: Photo taken 4/19/16 from location where run-off leaves lease road, facing East and onto the adjacent cropland.



Photo 5: Photo taken 4/19/16 from previous location, facing North along the lease road. This photo illustrates stormwater traveling along the path of the lease road to this low point along the lease road.



Photo 6: Photo taken 4/19/16 from previous location, facing South along the lease road. This photo illustrates stormwater traveling along the path of the lease road to this low point along the lease road.