



Ursa Operating Company, LLC

Rockies Region

Monument Ridge B

Monument Ridge B 44B-08-07-95

Wellbore #1

Design: Production

End of Well Report

02 February, 2016



Company:	Ursa Operating Company, LLC	Local Co-ordinate Reference:	Well Monument Ridge B 44B-08-07-95
Project:	Rockies Region	TVD Reference:	Monument Ridge B 44B-08-07-95 @ 5718.8usft (PLAN
Site:	Monument Ridge B	MD Reference:	Monument Ridge B 44B-08-07-95 @ 5718.8usft (PLAN
Well:	Monument Ridge B 44B-08-07-95	North Reference:	True
Wellbore:	Wellbore #1	Survey Calculation Method:	Minimum Curvature
Design:	Production	Database:	EDM 5000.1 Single User Db

Project		Rockies Region	
Map System:	US State Plane 1983	System Datum:	Mean Sea Level
Geo Datum:	North American Datum 1983		
Map Zone:	Colorado Central Zone		

Site		Monument Ridge B			
Site Position:		Northing:		1,596,716.56 usft	
From:	Lat/Long	Easting:		2,287,433.43 usft	
Position Uncertainty:		Slot Radius:		13-3/16 "	
				Latitude: 39° 26' 40.501 N	
				Longitude: 108° 1' 24.665 W	
				Grid Convergence: -1.59 °	

Well		Monument Ridge B 44B-08-07-95, SHL: 39.447489773 -108.012356002				
Well Position	+N/-S	0.0 usft	Northing:	1,597,687.29 usft	Latitude:	39° 26' 50.963 N
	+E/-W	0.0 usft	Easting:	2,290,613.74 usft	Longitude:	108° 0' 44.482 W
Position Uncertainty		0.0 usft	Wellhead Elevation:	5,718.8 usft	Ground Level:	5,701.8 usft

Wellbore	Wellbore #1				
Magnetics	Model Name	Sample Date	Declination (°)	Dip Angle (°)	Field Strength (nT)
	IGRF2015	1/6/2016	9.85	65.57	51,664

Design		Production			
Audit Notes:					
Version:	1.0	Phase:	ACTUAL	Tie On Depth:	0.0
Vertical Section:	Depth From (TVD) (usft)		+N/-S (usft)	+E/-W (usft)	Direction (°)
	0.0		0.0	0.0	270.33

Survey Program		Date	1/28/2016		
From (usft)	To (usft)	Survey (Wellbore)	Tool Name	Description	
89.0	6,935.0	Survey #1 (Wellbore #1)	MWD	MWD - Standard	

Company:	Ursa Operating Company, LLC	Local Co-ordinate Reference:	Well Monument Ridge B 44B-08-07-95
Project:	Rockies Region	TVD Reference:	Monument Ridge B 44B-08-07-95 @ 5718.8usft (PLAN
Site:	Monument Ridge B	MD Reference:	Monument Ridge B 44B-08-07-95 @ 5718.8usft (PLAN
Well:	Monument Ridge B 44B-08-07-95	North Reference:	True
Wellbore:	Wellbore #1	Survey Calculation Method:	Minimum Curvature
Design:	Production	Database:	EDM 5000.1 Single User Db

Survey										
MD (usft)	Inc (°)	Azi (azimuth) (°)	TVD (usft)	V. Sec (usft)	N/S (usft)	E/W (usft)	DLeg (°/100usft)	Build (°/100usft)	Turn (°/100usft)	
0.0	0.00	0.00	0.0	0.0	0.0	0.0	0.00	0.00	0.00	
89.0	0.31	226.54	89.0	0.2	-0.2	-0.2	0.35	0.35	0.00	
118.0	0.26	282.62	118.0	0.3	-0.2	-0.3	0.94	-0.17	193.38	
148.0	0.48	275.28	148.0	0.5	-0.2	-0.5	0.75	0.73	-24.47	
179.0	0.44	288.38	179.0	0.7	-0.1	-0.7	0.36	-0.13	42.26	
209.0	0.48	263.37	209.0	1.0	-0.1	-1.0	0.68	0.13	-83.37	
238.0	0.92	269.04	238.0	1.3	-0.1	-1.3	1.53	1.52	19.55	
269.0	0.75	270.09	269.0	1.8	-0.1	-1.8	0.55	-0.55	3.39	
300.0	1.27	271.90	300.0	2.3	-0.1	-2.3	1.68	1.68	5.84	
330.0	1.58	265.44	330.0	3.1	-0.1	-3.1	1.16	1.03	-21.53	
361.0	2.07	263.41	361.0	4.0	-0.2	-4.0	1.59	1.58	-6.55	
392.0	2.68	262.76	391.9	5.3	-0.4	-5.3	1.97	1.97	-2.10	
422.0	3.55	263.70	421.9	6.9	-0.6	-6.9	2.90	2.90	3.13	
452.0	4.36	266.60	451.8	9.0	-0.8	-9.0	2.78	2.70	9.67	
483.0	5.01	269.87	482.7	11.5	-0.8	-11.5	2.27	2.10	10.55	
514.0	5.67	268.60	513.6	14.4	-0.9	-14.4	2.16	2.13	-4.10	
544.0	6.15	270.14	543.4	17.5	-0.9	-17.5	1.68	1.60	5.13	
575.0	6.55	268.47	574.2	20.9	-0.9	-20.9	1.42	1.29	-5.39	
606.0	7.12	270.97	605.0	24.6	-1.0	-24.6	2.07	1.84	8.06	
636.0	7.29	270.97	634.8	28.4	-0.9	-28.4	0.57	0.57	0.00	
667.0	7.43	271.57	665.5	32.3	-0.8	-32.3	0.52	0.45	1.94	
697.0	7.51	272.56	695.3	36.2	-0.7	-36.2	0.51	0.27	3.30	
728.0	7.78	271.72	726.0	40.4	-0.5	-40.4	0.94	0.87	-2.71	
758.0	7.95	272.12	755.7	44.5	-0.4	-44.5	0.60	0.57	1.33	
788.0	7.60	270.31	785.4	48.5	-0.3	-48.5	1.42	-1.17	-6.03	
819.0	7.12	265.13	816.2	52.5	-0.4	-52.5	2.64	-1.55	-16.71	
849.0	6.97	262.60	845.9	56.1	-0.8	-56.1	1.15	-0.50	-8.43	

Company:	Ursa Operating Company, LLC	Local Co-ordinate Reference:	Well Monument Ridge B 44B-08-07-95
Project:	Rockies Region	TVD Reference:	Monument Ridge B 44B-08-07-95 @ 5718.8usft (PLAN
Site:	Monument Ridge B	MD Reference:	Monument Ridge B 44B-08-07-95 @ 5718.8usft (PLAN
Well:	Monument Ridge B 44B-08-07-95	North Reference:	True
Wellbore:	Wellbore #1	Survey Calculation Method:	Minimum Curvature
Design:	Production	Database:	EDM 5000.1 Single User Db

Survey										
MD (usft)	Inc (°)	Azi (azimuth) (°)	TVD (usft)	V. Sec (usft)	N/S (usft)	E/W (usft)	DLeg (°/100usft)	Build (°/100usft)	Turn (°/100usft)	
892.0	6.50	266.80	888.7	61.2	-1.3	-61.2	1.58	-1.09	9.77	
935.0	6.19	269.67	931.4	65.9	-1.5	-65.9	1.03	-0.72	6.67	
977.0	6.10	269.93	973.1	70.4	-1.5	-70.4	0.22	-0.21	0.62	
1,020.0	6.25	271.92	1,015.9	75.0	-1.4	-75.0	0.61	0.35	4.63	
1,063.0	6.06	274.27	1,058.6	79.6	-1.1	-79.6	0.73	-0.44	5.47	
1,106.0	5.76	273.61	1,101.4	84.0	-0.8	-84.1	0.72	-0.70	-1.53	
1,148.0	5.70	275.25	1,143.2	88.2	-0.5	-88.2	0.42	-0.14	3.90	
1,191.0	5.32	275.81	1,186.0	92.3	-0.1	-92.3	0.89	-0.88	1.30	
1,234.0	5.39	276.71	1,228.8	96.3	0.3	-96.3	0.25	0.16	2.09	
1,276.0	5.41	276.20	1,270.6	100.3	0.8	-100.3	0.12	0.05	-1.21	
1,319.0	5.98	269.08	1,313.4	104.5	0.9	-104.5	2.11	1.33	-16.56	
1,362.0	6.77	265.80	1,356.2	109.3	0.7	-109.3	2.02	1.84	-7.63	
1,404.0	7.47	265.30	1,397.8	114.5	0.3	-114.5	1.67	1.67	-1.19	
1,447.0	7.69	266.80	1,440.5	120.1	-0.1	-120.1	0.69	0.51	3.49	
1,490.0	7.56	267.28	1,483.1	125.8	-0.4	-125.8	0.34	-0.30	1.12	
1,532.0	7.82	269.61	1,524.7	131.4	-0.5	-131.4	0.97	0.62	5.55	
1,575.0	7.95	269.13	1,567.3	137.3	-0.6	-137.3	0.34	0.30	-1.12	
1,617.0	7.95	268.25	1,608.9	143.1	-0.7	-143.2	0.29	0.00	-2.10	
1,650.0	8.04	266.21	1,641.6	147.7	-0.9	-147.7	0.90	0.27	-6.18	
1,745.0	8.54	261.51	1,735.6	161.3	-2.4	-161.3	0.89	0.53	-4.95	
1,831.0	7.31	262.14	1,820.8	173.1	-4.1	-173.1	1.43	-1.43	0.73	
1,916.0	6.86	275.54	1,905.1	183.5	-4.4	-183.5	2.01	-0.53	15.76	
2,002.0	6.59	280.20	1,990.5	193.4	-3.0	-193.5	0.71	-0.31	5.42	
2,087.0	6.55	271.72	2,075.0	203.1	-2.0	-203.1	1.14	-0.05	-9.98	
2,172.0	6.42	272.82	2,159.4	212.7	-1.6	-212.7	0.21	-0.15	1.29	
2,258.0	6.91	269.02	2,244.8	222.7	-1.4	-222.7	0.77	0.57	-4.42	
2,343.0	6.97	267.56	2,329.2	232.9	-1.8	-232.9	0.22	0.07	-1.72	

Company:	Ursa Operating Company, LLC	Local Co-ordinate Reference:	Well Monument Ridge B 44B-08-07-95
Project:	Rockies Region	TVD Reference:	Monument Ridge B 44B-08-07-95 @ 5718.8usft (PLAN
Site:	Monument Ridge B	MD Reference:	Monument Ridge B 44B-08-07-95 @ 5718.8usft (PLAN
Well:	Monument Ridge B 44B-08-07-95	North Reference:	True
Wellbore:	Wellbore #1	Survey Calculation Method:	Minimum Curvature
Design:	Production	Database:	EDM 5000.1 Single User Db

Survey										
MD (usft)	Inc (°)	Azi (azimuth) (°)	TVD (usft)	V. Sec (usft)	N/S (usft)	E/W (usft)	DLeg (°/100usft)	Build (°/100usft)	Turn (°/100usft)	
2,429.0	6.42	264.69	2,414.6	242.9	-2.4	-242.9	0.75	-0.64	-3.34	
2,514.0	6.68	267.55	2,499.1	252.6	-3.1	-252.6	0.49	0.31	3.36	
2,600.0	7.95	267.06	2,584.4	263.5	-3.6	-263.5	1.48	1.48	-0.57	
2,685.0	7.56	269.92	2,668.6	275.0	-3.9	-275.0	0.65	-0.46	3.36	
2,770.0	7.16	269.22	2,752.9	285.9	-4.0	-285.9	0.48	-0.47	-0.82	
2,856.0	7.12	270.49	2,838.2	296.6	-4.0	-296.6	0.19	-0.05	1.48	
2,941.0	6.61	266.69	2,922.6	306.7	-4.2	-306.7	0.80	-0.60	-4.47	
3,027.0	7.34	271.59	3,008.0	317.1	-4.4	-317.2	1.09	0.85	5.70	
3,112.0	6.87	270.47	3,092.3	327.7	-4.2	-327.7	0.58	-0.55	-1.32	
3,197.0	7.78	277.92	3,176.6	338.4	-3.4	-338.5	1.55	1.07	8.76	
3,283.0	7.60	279.85	3,261.9	349.8	-1.6	-349.8	0.37	-0.21	2.24	
3,368.0	7.16	277.70	3,346.2	360.6	0.1	-360.6	0.61	-0.52	-2.53	
3,453.0	6.90	277.39	3,430.5	370.9	1.5	-370.9	0.31	-0.31	-0.36	
3,539.0	7.03	270.58	3,515.9	381.3	2.2	-381.3	0.97	0.15	-7.92	
3,624.0	6.68	271.52	3,600.3	391.5	2.4	-391.5	0.43	-0.41	1.11	
3,710.0	6.39	270.99	3,685.7	401.3	2.6	-401.2	0.34	-0.34	-0.62	
3,795.0	5.84	269.04	3,770.2	410.3	2.6	-410.3	0.69	-0.65	-2.29	
3,881.0	6.15	268.55	3,855.8	419.3	2.4	-419.3	0.37	0.36	-0.57	
3,966.0	6.59	279.54	3,940.2	428.7	3.1	-428.6	1.52	0.52	12.93	
4,051.0	6.15	277.21	4,024.7	438.0	4.5	-438.0	0.60	-0.52	-2.74	
4,136.0	5.67	276.25	4,109.3	446.7	5.5	-446.7	0.58	-0.56	-1.13	
4,222.0	4.83	275.24	4,194.9	454.5	6.3	-454.5	0.98	-0.98	-1.17	
4,307.0	4.39	269.13	4,279.6	461.3	6.6	-461.3	0.78	-0.52	-7.19	
4,393.0	3.96	272.51	4,365.4	467.6	6.6	-467.6	0.58	-0.50	3.93	
4,478.0	3.69	270.58	4,450.2	473.3	6.8	-473.2	0.35	-0.32	-2.27	
4,564.0	3.12	264.29	4,536.1	478.4	6.6	-478.3	0.79	-0.66	-7.31	
4,649.0	2.86	266.62	4,620.9	482.8	6.2	-482.7	0.34	-0.31	2.74	

Company:	Ursa Operating Company, LLC	Local Co-ordinate Reference:	Well Monument Ridge B 44B-08-07-95
Project:	Rockies Region	TVD Reference:	Monument Ridge B 44B-08-07-95 @ 5718.8usft (PLAN
Site:	Monument Ridge B	MD Reference:	Monument Ridge B 44B-08-07-95 @ 5718.8usft (PLAN
Well:	Monument Ridge B 44B-08-07-95	North Reference:	True
Wellbore:	Wellbore #1	Survey Calculation Method:	Minimum Curvature
Design:	Production	Database:	EDM 5000.1 Single User Db

Survey										
MD (usft)	Inc (°)	Azi (azimuth) (°)	TVD (usft)	V. Sec (usft)	N/S (usft)	E/W (usft)	DLeg (°/100usft)	Build (°/100usft)	Turn (°/100usft)	
4,734.0	2.29	259.20	4,705.9	486.6	5.8	-486.5	0.78	-0.67	-8.73	
4,820.0	2.33	261.31	4,791.8	490.0	5.2	-489.9	0.11	0.05	2.45	
4,905.0	2.11	254.49	4,876.7	493.2	4.5	-493.2	0.40	-0.26	-8.02	
4,991.0	1.67	252.74	4,962.7	495.9	3.7	-495.9	0.52	-0.51	-2.03	
5,076.0	1.63	256.30	5,047.6	498.2	3.1	-498.2	0.13	-0.05	4.19	
5,162.0	0.35	307.62	5,133.6	499.6	3.0	-499.6	1.67	-1.49	59.67	
5,247.0	0.26	26.99	5,218.6	499.8	3.3	-499.8	0.47	-0.11	93.38	
5,332.0	0.22	59.02	5,303.6	499.5	3.5	-499.5	0.16	-0.05	37.68	
5,418.0	0.26	93.08	5,389.6	499.2	3.6	-499.2	0.17	0.05	39.60	
5,503.0	0.35	136.72	5,474.6	498.8	3.4	-498.8	0.28	0.11	51.34	
5,589.0	0.31	114.04	5,560.6	498.4	3.1	-498.4	0.16	-0.05	-26.37	
5,674.0	0.31	167.13	5,645.6	498.2	2.8	-498.2	0.33	0.00	62.46	
5,760.0	0.31	118.79	5,731.6	497.9	2.5	-497.9	0.30	0.00	-56.21	
5,845.0	0.13	103.45	5,816.6	497.6	2.3	-497.6	0.22	-0.21	-18.05	
5,930.0	0.35	93.08	5,901.6	497.3	2.3	-497.3	0.26	0.26	-12.20	
6,016.0	0.40	103.01	5,987.6	496.7	2.2	-496.7	0.10	0.06	11.55	
6,101.0	0.53	34.46	6,072.6	496.2	2.5	-496.2	0.63	0.15	-80.65	
6,187.0	0.66	57.05	6,158.6	495.6	3.1	-495.6	0.31	0.15	26.27	
6,272.0	0.79	81.26	6,243.6	494.6	3.4	-494.6	0.39	0.15	28.48	
6,357.0	0.88	76.47	6,328.6	493.4	3.7	-493.4	0.13	0.11	-5.64	
6,443.0	0.79	85.13	6,414.6	492.1	3.9	-492.1	0.18	-0.10	10.07	
6,528.0	0.62	132.90	6,499.6	491.2	3.6	-491.2	0.70	-0.20	56.20	
6,614.0	0.35	203.78	6,585.6	491.0	3.1	-491.0	0.70	-0.31	82.42	
6,699.0	0.20	132.29	6,670.6	491.0	2.7	-491.0	0.40	-0.18	-84.11	
6,784.0	0.10	290.32	6,755.6	490.9	2.6	-490.9	0.35	-0.12	185.92	
6,870.0	0.18	301.52	6,841.6	491.1	2.7	-491.1	0.10	0.09	13.02	
Projection to Bit										

Company:	Ursa Operating Company, LLC	Local Co-ordinate Reference:	Well Monument Ridge B 44B-08-07-95
Project:	Rockies Region	TVD Reference:	Monument Ridge B 44B-08-07-95 @ 5718.8usft (PLAN
Site:	Monument Ridge B	MD Reference:	Monument Ridge B 44B-08-07-95 @ 5718.8usft (PLAN
Well:	Monument Ridge B 44B-08-07-95	North Reference:	True
Wellbore:	Wellbore #1	Survey Calculation Method:	Minimum Curvature
Design:	Production	Database:	EDM 5000.1 Single User Db

Survey										
MD (usft)	Inc (°)	Azi (azimuth) (°)	TVD (usft)	V. Sec (usft)	N/S (usft)	E/W (usft)	DLeg (°/100usft)	Build (°/100usft)	Turn (°/100usft)	
6,935.0	0.18	301.52	6,906.6	491.3	2.9	-491.3	0.00	0.00	0.00	

Design Annotations					
Measured Depth (usft)	Vertical Depth (usft)	Local Coordinates			
		+N/-S (usft)	+E/-W (usft)	Comment	
6,870.0	6,841.6	2.7	-491.1	Projection to Bit	

Checked By: _____	Approved By: _____	Date: _____
-------------------	--------------------	-------------

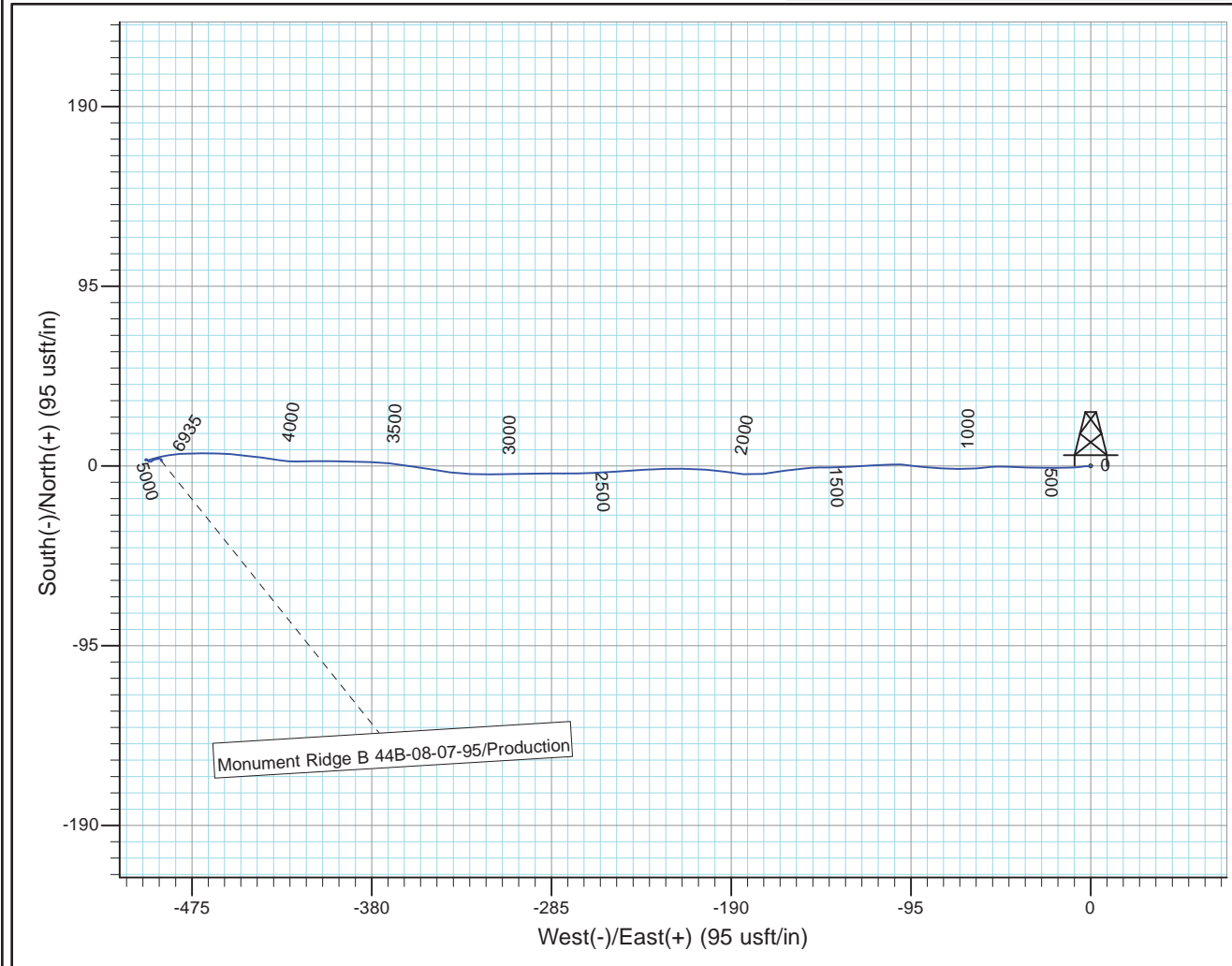
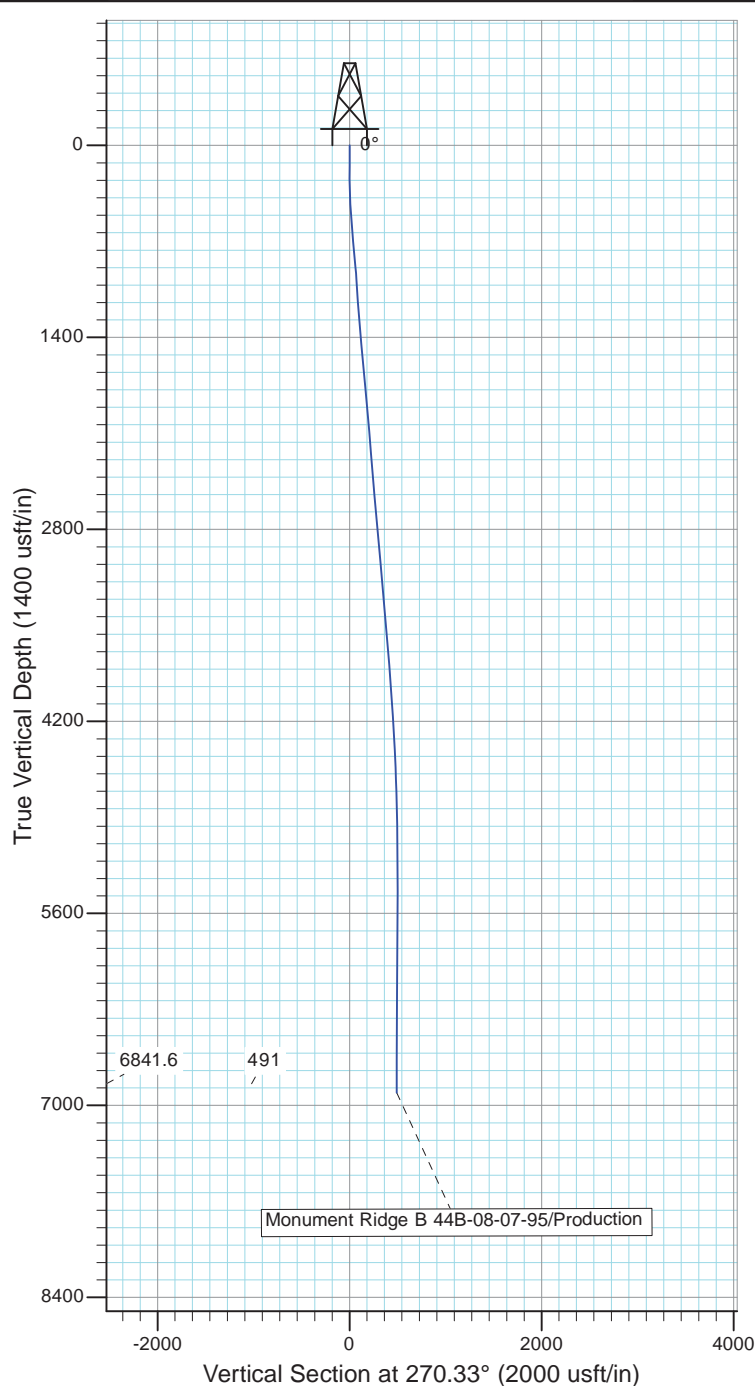


Project: Rockies Region
 Site: Monument Ridge B
 Well: Monument Ridge B 44B-08-07-95
 Wellbore: Wellbore #1
 Design: Production



Azimuths to True North
 Magnetic North: 9.85°

Magnetic Field
 Strength: 51663.5nT
 Dip Angle: 65.57°
 Date: 1/6/2016
 Model: IGRF2015



Design: Production (Monument Ridge B 44B-08-07-95/Wellbore #1)

Created By: Matthew Linton

Date: 9:49, February 02 2016

THIS SURVEY IS CORRECT TO THE BEST OF
 MY KNOWLEDGE AND IS SUPPORTED
 BY ACTUAL FIELD DATA