



Ursa Operating Company, LLC

Rockies Region

Monument Ridge B

Monument Ridge B 43D-08-07-95

Wellbore #1

Design: Production

End of Well Report

22 February, 2016



Company:	Ursa Operating Company, LLC	Local Co-ordinate Reference:	Well Monument Ridge B 43D-08-07-95
Project:	Rockies Region	TVD Reference:	Monument Ridge B 43D-08-07-95 @ 5718.8usft (PLAN
Site:	Monument Ridge B	MD Reference:	Monument Ridge B 43D-08-07-95 @ 5718.8usft (PLAN
Well:	Monument Ridge B 43D-08-07-95	North Reference:	True
Wellbore:	Wellbore #1	Survey Calculation Method:	Minimum Curvature
Design:	Production	Database:	EDM 5000.1 Single User Db

Project		Rockies Region	
Map System:	US State Plane 1983	System Datum:	Mean Sea Level
Geo Datum:	North American Datum 1983		
Map Zone:	Colorado Central Zone		

Site		Monument Ridge B							
Site Position:		Northing:		1,596,716.56	usft	Latitude:		39° 26' 40.501 N	
From:	Lat/Long	Easting:		2,287,433.43	usft	Longitude:		108° 1' 24.665 W	
Position Uncertainty:		0.0	usft	Slot Radius:		13-3/16	"	Grid Convergence:	-1.59

Well		Monument Ridge B 43D-08-07-95, SHL: 39.447654424 -108.012356016				
Well Position	+N-S	0.0 usft	Northing:	1,597,747.23 usft	Latitude:	39° 26' 51.556 N
	+E-W	0.0 usft	Easting:	2,290,615.40 usft	Longitude:	108° 0' 44.482 W
Position Uncertainty		0.0 usft	Wellhead Elevation:	5,718.8 usft	Ground Level:	5,701.8 usft

Wellbore	Wellbore #1				
Magnetics	Model Name	Sample Date	Declination (°)	Dip Angle (°)	Field Strength (nT)
	IGRF2015	1/6/2016	9.85	65.57	51,664

Design		Production			
Audit Notes:					
Version:	1.0	Phase:	ACTUAL	Tie On Depth:	0.0
Vertical Section:	Depth From (TVD) (usft)		+N/-S (usft)	+E/-W (usft)	Direction (°)
	0.0		0.0	0.0	319.84

Survey Program		Date	2/22/2016		
From (usft)	To (usft)	Survey (Wellbore)	Tool Name	Description	
121.0	7,010.0	Survey #1 (Wellbore #1)	MWD	MWD - Standard	

Company:	Ursa Operating Company, LLC	Local Co-ordinate Reference:	Well Monument Ridge B 43D-08-07-95
Project:	Rockies Region	TVD Reference:	Monument Ridge B 43D-08-07-95 @ 5718.8usft (PLAN
Site:	Monument Ridge B	MD Reference:	Monument Ridge B 43D-08-07-95 @ 5718.8usft (PLAN
Well:	Monument Ridge B 43D-08-07-95	North Reference:	True
Wellbore:	Wellbore #1	Survey Calculation Method:	Minimum Curvature
Design:	Production	Database:	EDM 5000.1 Single User Db

Survey										
MD (usft)	Inc (°)	Azi (azimuth) (°)	TVD (usft)	V. Sec (usft)	N/S (usft)	E/W (usft)	DLeg (°/100usft)	Build (°/100usft)	Turn (°/100usft)	
0.0	0.00	0.00	0.0	0.0	0.0	0.0	0.00	0.00	0.00	
121.0	0.77	279.83	121.0	0.6	0.1	-0.8	0.64	0.64	0.00	
151.0	0.92	280.86	151.0	1.0	0.2	-1.2	0.50	0.50	3.43	
182.0	0.57	306.00	182.0	1.3	0.4	-1.6	1.52	-1.13	81.10	
211.0	0.66	43.07	211.0	1.5	0.6	-1.6	3.18	0.31	334.72	
241.0	0.79	63.07	241.0	1.4	0.8	-1.3	0.94	0.43	66.67	
272.0	0.75	63.24	272.0	1.3	1.0	-0.9	0.13	-0.13	0.55	
303.0	1.12	70.38	303.0	1.2	1.2	-0.5	1.25	1.19	23.03	
333.0	0.83	51.63	333.0	1.1	1.4	0.0	1.43	-0.97	-62.50	
364.0	1.10	12.00	364.0	1.3	1.8	0.2	2.26	0.87	-127.84	
395.0	1.67	355.96	395.0	1.8	2.6	0.2	2.21	1.84	-51.74	
425.0	2.24	347.30	424.9	2.7	3.6	0.1	2.13	1.90	-28.87	
455.0	2.68	337.90	454.9	3.9	4.8	-0.3	1.99	1.47	-31.33	
486.0	3.18	335.19	485.9	5.4	6.3	-0.9	1.67	1.61	-8.74	
517.0	3.82	331.67	516.8	7.2	7.9	-1.8	2.18	2.06	-11.35	
547.0	4.35	332.10	546.7	9.3	9.8	-2.8	1.77	1.77	1.43	
578.0	4.97	318.80	577.6	11.8	11.9	-4.2	4.01	2.00	-42.90	
608.0	5.80	316.03	607.5	14.6	13.9	-6.1	2.90	2.77	-9.23	
639.0	6.60	321.84	638.3	18.0	16.5	-8.3	3.28	2.58	18.74	
670.0	7.16	318.53	669.1	21.7	19.3	-10.7	2.21	1.81	-10.68	
700.0	7.73	316.19	698.9	25.6	22.2	-13.3	2.15	1.90	-7.80	
731.0	8.26	316.91	729.5	29.9	25.3	-16.3	1.74	1.71	2.32	
761.0	9.10	317.92	759.2	34.4	28.6	-19.4	2.85	2.80	3.37	
791.0	9.98	318.58	788.8	39.4	32.4	-22.7	2.96	2.93	2.20	
822.0	10.91	320.11	819.3	45.0	36.6	-26.3	3.13	3.00	4.94	
852.0	11.38	319.97	848.7	50.8	41.1	-30.1	1.57	1.57	-0.47	
895.0	11.60	319.80	890.8	59.3	47.6	-35.6	0.52	0.51	-0.40	

Company:	Ursa Operating Company, LLC	Local Co-ordinate Reference:	Well Monument Ridge B 43D-08-07-95
Project:	Rockies Region	TVD Reference:	Monument Ridge B 43D-08-07-95 @ 5718.8usft (PLAN
Site:	Monument Ridge B	MD Reference:	Monument Ridge B 43D-08-07-95 @ 5718.8usft (PLAN
Well:	Monument Ridge B 43D-08-07-95	North Reference:	True
Wellbore:	Wellbore #1	Survey Calculation Method:	Minimum Curvature
Design:	Production	Database:	EDM 5000.1 Single User Db

Survey									
MD (usft)	Inc (°)	Azi (azimuth) (°)	TVD (usft)	V. Sec (usft)	N/S (usft)	E/W (usft)	DLeg (°/100usft)	Build (°/100usft)	Turn (°/100usft)
938.0	11.82	320.03	933.0	68.1	54.3	-41.2	0.52	0.51	0.53
980.0	12.17	319.63	974.0	76.8	61.0	-46.8	0.86	0.83	-0.95
1,023.0	12.48	319.97	1,016.0	86.0	68.0	-52.8	0.74	0.72	0.79
1,065.0	12.71	320.29	1,057.0	95.1	75.0	-58.6	0.57	0.55	0.76
1,108.0	11.21	319.53	1,099.1	104.0	81.8	-64.4	3.51	-3.49	-1.77
1,151.0	10.97	319.02	1,141.3	112.3	88.1	-69.8	0.60	-0.56	-1.19
1,194.0	11.16	318.52	1,183.5	120.6	94.3	-75.2	0.50	0.44	-1.16
1,236.0	11.34	320.15	1,224.7	128.8	100.5	-80.5	0.87	0.43	3.88
1,279.0	11.56	320.02	1,266.8	137.3	107.1	-86.0	0.52	0.51	-0.30
1,322.0	11.78	321.51	1,308.9	146.0	113.8	-91.5	0.87	0.51	3.47
1,365.0	12.17	321.11	1,351.0	154.9	120.8	-97.1	0.93	0.91	-0.93
1,407.0	12.66	321.73	1,392.0	163.9	127.8	-102.7	1.21	1.17	1.48
1,450.0	12.44	322.21	1,434.0	173.3	135.2	-108.5	0.57	-0.51	1.12
1,493.0	11.60	322.39	1,476.1	182.2	142.3	-114.0	1.96	-1.95	0.42
1,535.0	11.65	322.13	1,517.2	190.7	149.0	-119.1	0.17	0.12	-0.62
1,578.0	11.69	320.15	1,559.3	199.4	155.7	-124.6	0.94	0.09	-4.60
1,621.0	11.82	316.19	1,601.4	208.1	162.2	-130.4	1.90	0.30	-9.21
1,663.0	11.78	314.43	1,642.5	216.7	168.4	-136.5	0.86	-0.10	-4.19
1,680.0	11.78	314.96	1,659.2	220.1	170.8	-138.9	0.64	0.00	3.12
1,745.0	11.75	315.56	1,722.8	233.3	180.2	-148.3	0.19	-0.05	0.92
1,830.0	10.90	315.40	1,806.1	250.0	192.1	-160.0	1.00	-1.00	-0.19
1,915.0	10.59	318.65	1,889.7	265.8	203.7	-170.8	0.80	-0.36	3.82
2,001.0	10.37	323.97	1,974.2	281.4	215.9	-180.5	1.15	-0.26	6.19
2,086.0	10.12	326.03	2,057.9	296.5	228.3	-189.2	0.52	-0.29	2.42
2,171.0	10.90	325.11	2,141.4	311.9	241.1	-198.0	0.94	0.92	-1.08
2,257.0	11.25	321.60	2,225.8	328.4	254.3	-207.8	0.88	0.41	-4.08
2,342.0	11.73	321.99	2,309.1	345.3	267.6	-218.3	0.57	0.56	0.46

Company:	Ursa Operating Company, LLC	Local Co-ordinate Reference:	Well Monument Ridge B 43D-08-07-95
Project:	Rockies Region	TVD Reference:	Monument Ridge B 43D-08-07-95 @ 5718.8usft (PLAN
Site:	Monument Ridge B	MD Reference:	Monument Ridge B 43D-08-07-95 @ 5718.8usft (PLAN
Well:	Monument Ridge B 43D-08-07-95	North Reference:	True
Wellbore:	Wellbore #1	Survey Calculation Method:	Minimum Curvature
Design:	Production	Database:	EDM 5000.1 Single User Db

Survey										
MD (usft)	Inc (°)	Azi (azimuth) (°)	TVD (usft)	V. Sec (usft)	N/S (usft)	E/W (usft)	DLeg (°/100usft)	Build (°/100usft)	Turn (°/100usft)	
2,428.0	10.90	322.96	2,393.5	362.2	281.0	-228.6	0.99	-0.97	1.13	
2,513.0	10.28	320.68	2,477.0	377.8	293.3	-238.2	0.88	-0.73	-2.68	
2,599.0	11.29	321.95	2,561.5	393.9	305.8	-248.3	1.21	1.17	1.48	
2,684.0	10.55	320.24	2,645.0	410.0	318.4	-258.4	0.95	-0.87	-2.01	
2,769.0	9.98	319.20	2,728.6	425.1	329.9	-268.2	0.71	-0.67	-1.22	
2,855.0	11.38	320.41	2,813.1	441.0	342.1	-278.5	1.65	1.63	1.41	
2,940.0	10.55	319.44	2,896.5	457.2	354.5	-288.9	1.00	-0.98	-1.14	
3,026.0	10.28	318.70	2,981.1	472.8	366.2	-299.1	0.35	-0.31	-0.86	
3,111.0	11.32	320.54	3,064.6	488.7	378.4	-309.4	1.29	1.22	2.16	
3,196.0	10.59	319.27	3,148.1	504.8	390.7	-319.8	0.90	-0.86	-1.49	
3,282.0	10.28	319.01	3,232.7	520.4	402.5	-330.0	0.36	-0.36	-0.30	
3,366.0	9.84	319.23	3,315.4	535.1	413.6	-339.6	0.53	-0.52	0.26	
3,452.0	10.94	321.69	3,399.9	550.6	425.6	-349.4	1.38	1.28	2.86	
3,538.0	11.29	321.77	3,484.3	567.2	438.6	-359.7	0.41	0.41	0.09	
3,623.0	11.13	319.88	3,567.7	583.7	451.4	-370.1	0.47	-0.19	-2.22	
3,708.0	10.63	320.98	3,651.2	599.7	463.8	-380.3	0.64	-0.59	1.29	
3,794.0	9.62	318.26	3,735.8	614.8	475.3	-390.1	1.30	-1.17	-3.16	
3,879.0	9.50	317.53	3,819.7	628.9	485.8	-399.6	0.20	-0.14	-0.86	
3,965.0	10.59	319.62	3,904.3	643.9	497.0	-409.5	1.34	1.27	2.43	
4,050.0	10.02	320.28	3,988.0	659.1	508.6	-419.3	0.68	-0.67	0.78	
4,136.0	10.72	320.46	4,072.6	674.6	520.6	-429.2	0.81	0.81	0.21	
4,221.0	10.15	319.05	4,156.2	690.0	532.3	-439.1	0.73	-0.67	-1.66	
4,307.0	8.62	320.65	4,241.0	704.0	543.0	-448.2	1.80	-1.78	1.86	
4,392.0	8.22	322.39	4,325.1	716.5	552.8	-455.9	0.56	-0.47	2.05	
4,477.0	7.60	324.63	4,409.3	728.1	562.2	-462.9	0.81	-0.73	2.64	
4,563.0	7.25	325.51	4,494.6	739.2	571.3	-469.2	0.43	-0.41	1.02	
4,648.0	5.61	329.10	4,579.0	748.7	579.3	-474.4	1.99	-1.93	4.22	

Company:	Ursa Operating Company, LLC	Local Co-ordinate Reference:	Well Monument Ridge B 43D-08-07-95
Project:	Rockies Region	TVD Reference:	Monument Ridge B 43D-08-07-95 @ 5718.8usft (PLAN
Site:	Monument Ridge B	MD Reference:	Monument Ridge B 43D-08-07-95 @ 5718.8usft (PLAN
Well:	Monument Ridge B 43D-08-07-95	North Reference:	True
Wellbore:	Wellbore #1	Survey Calculation Method:	Minimum Curvature
Design:	Production	Database:	EDM 5000.1 Single User Db

Survey										
MD (usft)	Inc (°)	Azi (azimuth) (°)	TVD (usft)	V. Sec (usft)	N/S (usft)	E/W (usft)	DLeg (°/100usft)	Build (°/100usft)	Turn (°/100usft)	
4,734.0	3.82	324.28	4,664.7	755.7	585.2	-478.2	2.13	-2.08	-5.60	
4,819.0	2.05	333.10	4,749.6	760.0	588.9	-480.6	2.14	-2.08	10.38	
4,905.0	1.89	337.20	4,835.6	762.8	591.5	-481.8	0.25	-0.19	4.77	
4,990.0	1.83	339.23	4,920.5	765.4	594.1	-482.8	0.10	-0.07	2.39	
5,075.0	1.98	336.87	5,005.5	768.1	596.7	-483.9	0.20	0.18	-2.78	
5,161.0	0.66	281.52	5,091.5	769.9	598.2	-485.0	1.97	-1.53	-64.36	
5,246.0	0.53	247.51	5,176.4	770.4	598.1	-485.8	0.43	-0.15	-40.01	
5,332.0	0.48	231.25	5,262.4	770.6	597.7	-486.5	0.18	-0.06	-18.91	
5,417.0	0.44	224.35	5,347.4	770.5	597.3	-487.0	0.08	-0.05	-8.12	
5,503.0	0.48	200.75	5,433.4	770.3	596.7	-487.3	0.22	0.05	-27.44	
5,588.0	0.57	185.02	5,518.4	769.9	596.0	-487.5	0.20	0.11	-18.51	
5,673.0	0.66	181.63	5,603.4	769.2	595.1	-487.5	0.11	0.11	-3.99	
5,759.0	0.83	182.34	5,689.4	768.4	593.9	-487.6	0.20	0.20	0.83	
5,844.0	0.88	180.36	5,774.4	767.4	592.7	-487.6	0.07	0.06	-2.33	
5,930.0	0.22	191.39	5,860.4	766.8	591.8	-487.6	0.77	-0.77	12.83	
6,015.0	0.17	214.85	5,945.4	766.7	591.6	-487.7	0.11	-0.06	27.60	
6,101.0	0.40	222.81	6,031.4	766.6	591.3	-488.0	0.27	0.27	9.26	
6,186.0	0.40	243.60	6,116.4	766.6	590.9	-488.5	0.17	0.00	24.46	
6,271.0	0.35	200.05	6,201.4	766.6	590.5	-488.8	0.33	-0.06	-51.24	
6,357.0	0.35	163.39	6,287.4	766.2	590.0	-488.9	0.26	0.00	-42.63	
6,442.0	0.32	189.56	6,372.4	765.8	589.6	-488.8	0.18	-0.04	30.79	
6,528.0	0.13	224.61	6,458.4	765.7	589.2	-488.9	0.26	-0.22	40.76	
6,613.0	0.22	237.79	6,543.4	765.7	589.1	-489.1	0.12	0.11	15.51	
6,698.0	0.66	206.20	6,628.4	765.5	588.6	-489.5	0.57	0.52	-37.16	
6,784.0	1.14	196.88	6,714.4	764.8	587.3	-490.0	0.58	0.56	-10.84	
6,869.0	1.23	210.15	6,799.4	764.1	585.7	-490.7	0.34	0.11	15.61	

Company:	Ursa Operating Company, LLC	Local Co-ordinate Reference:	Well Monument Ridge B 43D-08-07-95
Project:	Rockies Region	TVD Reference:	Monument Ridge B 43D-08-07-95 @ 5718.8usft (PLAN
Site:	Monument Ridge B	MD Reference:	Monument Ridge B 43D-08-07-95 @ 5718.8usft (PLAN
Well:	Monument Ridge B 43D-08-07-95	North Reference:	True
Wellbore:	Wellbore #1	Survey Calculation Method:	Minimum Curvature
Design:	Production	Database:	EDM 5000.1 Single User Db

Survey									
MD (usft)	Inc (°)	Azi (azimuth) (°)	TVD (usft)	V. Sec (usft)	N/S (usft)	E/W (usft)	DLeg (°/100usft)	Build (°/100usft)	Turn (°/100usft)
6,955.0	1.14	208.22	6,885.4	763.4	584.1	-491.5	0.11	-0.10	-2.24
Projection to Bit									
7,010.0	1.14	208.22	6,940.3	763.0	583.2	-492.1	0.00	0.00	0.00

Design Annotations				
Measured Depth (usft)	Vertical Depth (usft)	Local Coordinates		Comment
		+N/-S (usft)	+E/-W (usft)	
6,955.0	6,885.4	584.1	-491.5	Projection to Bit

Checked By: _____	Approved By: _____	Date: _____
-------------------	--------------------	-------------

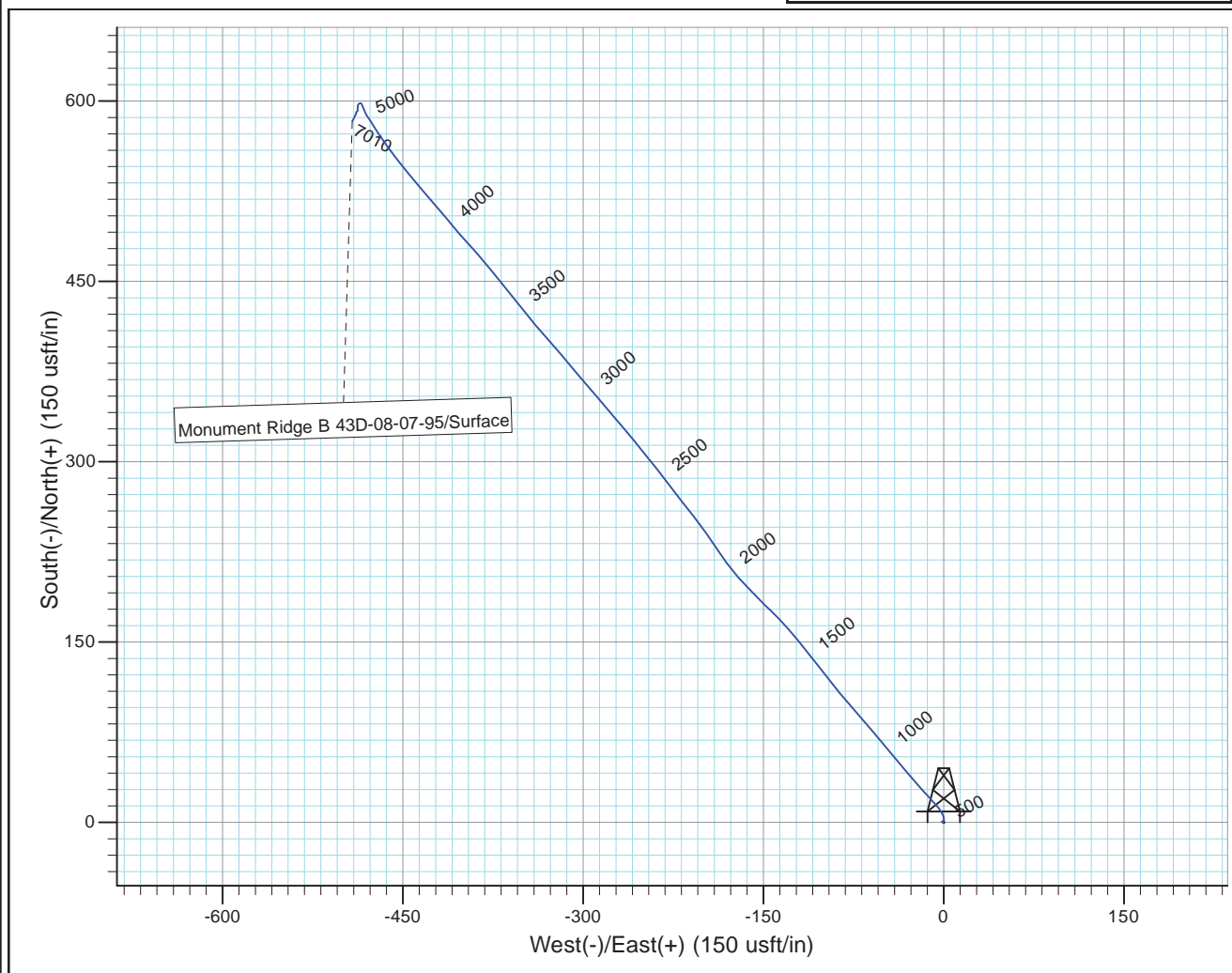
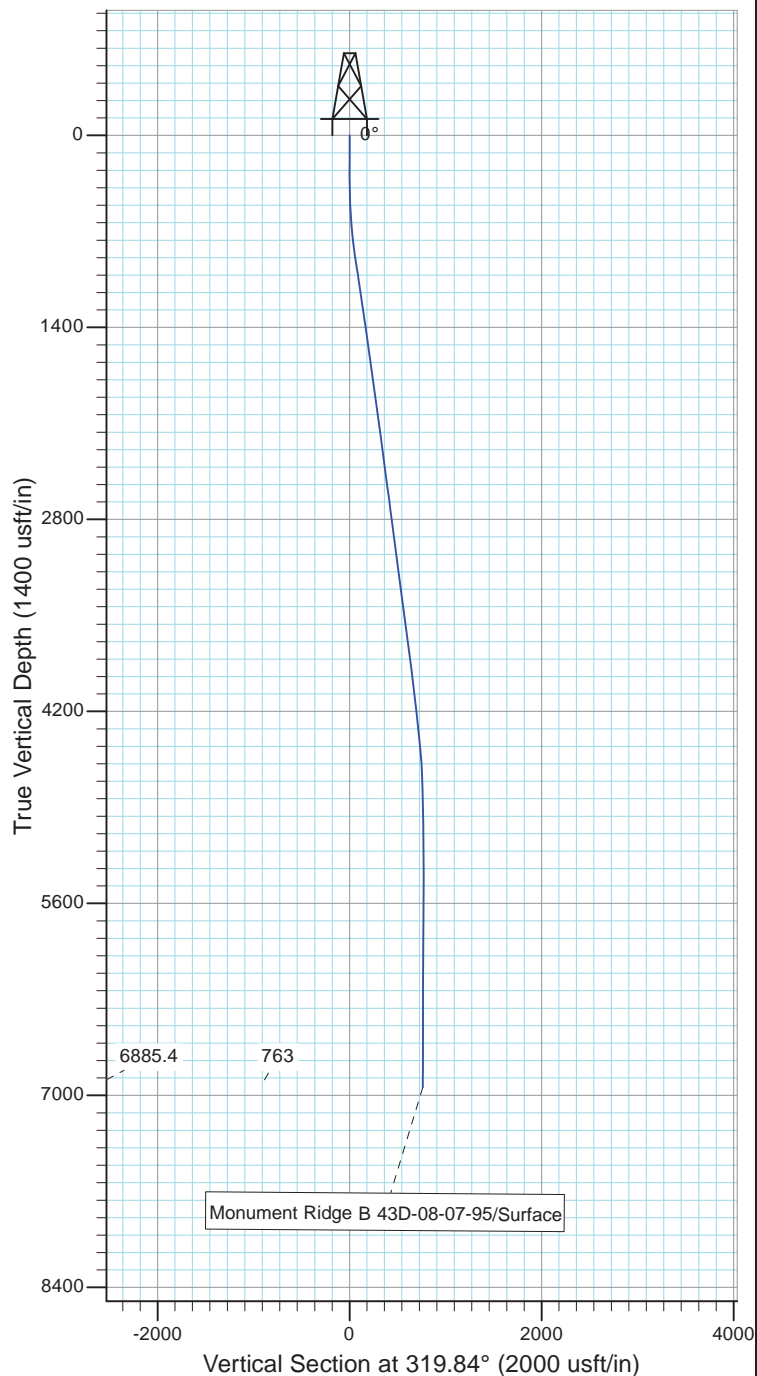


Project: Rockies Region
Site: Monument Ridge B
Well: Monument Ridge B 43D-08-07-95
Wellbore: Wellbore #1
Design: Production



Azimuths to True North
Magnetic North: 9.85°

Magnetic Field
Strength: 51663.6snT
Dip Angle: 65.57°
Date: 1/6/2016
Model: IGRF2015



Design: Production (Monument Ridge B 43D-08-07-95/Wellbore #1)

Created By: *Matthew Linton*

Date: 12:20, February 22 20

THIS SURVEY IS CORRECT TO THE BEST OF
MY KNOWLEDGE AND IS SUPPORTED
BY ACTUAL FIELD DATA