



Ursa Operating Company, LLC

Rockies Region

Monument Ridge B

Monument Ridge B 43C-08-07-95

Wellbore #1

Design: Production

End of Well Report

04 January, 2016



Company:	Ursa Operating Company, LLC	Local Co-ordinate Reference:	Well Monument Ridge B 43C-08-07-95
Project:	Rockies Region	TVD Reference:	Monument Ridge B 43C-08-07-95 @ 5718.8usft (PLAN
Site:	Monument Ridge B	MD Reference:	Monument Ridge B 43C-08-07-95 @ 5718.8usft (PLAN
Well:	Monument Ridge B 43C-08-07-95	North Reference:	True
Wellbore:	Wellbore #1	Survey Calculation Method:	Minimum Curvature
Design:	Production	Database:	EDM 5000.1 Single User Db

Project		Rockies Region	
Map System:	US State Plane 1983	System Datum:	Mean Sea Level
Geo Datum:	North American Datum 1983		
Map Zone:	Colorado Central Zone		

Site		Monument Ridge B						
Site Position:		Northing:		1,596,716.56	usft	Latitude:		39° 26' 40.501 N
From:	Lat/Long	Easting:		2,287,433.43	usft	Longitude:		108° 1' 24.665 W
Position Uncertainty:	0.0	Slot Radius:		13-3/16	"	Grid Convergence:		-1.59 °

Well		Monument Ridge B 43C-08-07-95, SHL: 39.447736750 -108.012356022				
Well Position	+N-S	0.0 usft	Northing:	1,597,777.21 usft	Latitude:	39° 26' 51.852 N
	+E-W	0.0 usft	Easting:	2,290,616.22 usft	Longitude:	108° 0' 44.482 W
Position Uncertainty		0.0 usft	Wellhead Elevation:	5,718.8 usft	Ground Level:	5,701.8 usft

Wellbore	Wellbore #1				
Magnetics	Model Name	Sample Date	Declination (°)	Dip Angle (°)	Field Strength (nT)
	IGRF2010	11/17/2015	9.78	65.57	51,778

Design		Production			
Audit Notes:					
Version:	1.0	Phase:	ACTUAL	Tie On Depth:	0.0
Vertical Section:	Depth From (TVD) (usft)		+N/-S (usft)	+E/-W (usft)	Direction (°)
	0.0		0.0	0.0	331.63

Survey Program		Date	1/4/2016		
From (usft)	To (usft)	Survey (Wellbore)	Tool Name	Description	
108.0	7,071.0	Survey #1 (Wellbore #1)	MWD	MWD - Standard	

Company:	Ursa Operating Company, LLC	Local Co-ordinate Reference:	Well Monument Ridge B 43C-08-07-95
Project:	Rockies Region	TVD Reference:	Monument Ridge B 43C-08-07-95 @ 5718.8usft (PLAN
Site:	Monument Ridge B	MD Reference:	Monument Ridge B 43C-08-07-95 @ 5718.8usft (PLAN
Well:	Monument Ridge B 43C-08-07-95	North Reference:	True
Wellbore:	Wellbore #1	Survey Calculation Method:	Minimum Curvature
Design:	Production	Database:	EDM 5000.1 Single User Db

Survey										
MD (usft)	Inc (°)	Azi (azimuth) (°)	TVD (usft)	V. Sec (usft)	N/S (usft)	E/W (usft)	DLeg (°/100usft)	Build (°/100usft)	Turn (°/100usft)	
0.0	0.00	0.00	0.0	0.0	0.0	0.0	0.00	0.00	0.00	
108.0	0.83	210.87	108.0	-0.4	-0.7	-0.4	0.77	0.77	0.00	
139.0	1.27	194.44	139.0	-0.8	-1.2	-0.6	1.71	1.42	-53.00	
170.0	1.23	171.15	170.0	-1.3	-1.9	-0.6	1.63	-0.13	-75.13	
200.0	1.27	162.14	200.0	-2.0	-2.5	-0.5	0.67	0.13	-30.03	
231.0	1.23	153.35	231.0	-2.6	-3.1	-0.2	0.63	-0.13	-28.35	
262.0	1.01	148.65	262.0	-3.2	-3.6	0.1	0.77	-0.71	-15.16	
292.0	0.13	121.05	292.0	-3.5	-3.9	0.2	2.99	-2.93	-92.00	
323.0	0.79	335.50	323.0	-3.3	-3.7	0.2	2.90	2.13	-469.52	
353.0	1.76	333.17	353.0	-2.7	-3.1	-0.1	3.24	3.23	-7.77	
383.0	2.68	334.98	382.9	-1.5	-2.1	-0.6	3.08	3.07	6.03	
414.0	3.56	334.58	413.9	0.2	-0.5	-1.3	2.84	2.84	-1.29	
445.0	4.24	334.99	444.8	2.3	1.4	-2.2	2.20	2.19	1.32	
476.0	5.31	337.81	475.7	4.8	3.7	-3.3	3.53	3.45	9.10	
506.0	6.28	340.03	505.6	7.8	6.6	-4.4	3.32	3.23	7.40	
537.0	7.18	339.94	536.3	11.4	10.0	-5.6	2.90	2.90	-0.29	
567.0	8.22	337.70	566.1	15.4	13.7	-7.1	3.61	3.47	-7.47	
598.0	9.24	336.35	596.7	20.1	18.0	-8.9	3.36	3.29	-4.35	
629.0	10.59	336.73	627.2	25.4	22.9	-11.0	4.36	4.35	1.23	
659.0	11.60	334.01	656.7	31.2	28.2	-13.4	3.79	3.37	-9.07	
689.0	12.70	332.95	686.0	37.5	33.8	-16.3	3.74	3.67	-3.53	
719.0	13.45	331.81	715.2	44.3	39.8	-19.4	2.64	2.50	-3.80	
750.0	14.37	331.86	745.3	51.7	46.4	-22.9	2.97	2.97	0.16	
793.0	15.33	330.89	786.9	62.8	56.1	-28.2	2.31	2.23	-2.26	
835.0	15.60	330.80	827.4	74.0	65.9	-33.7	0.65	0.64	-0.21	
878.0	15.86	331.33	868.8	85.6	76.1	-39.3	0.69	0.60	1.23	
921.0	16.00	330.98	910.1	97.4	86.4	-45.0	0.39	0.33	-0.81	

Company:	Ursa Operating Company, LLC	Local Co-ordinate Reference:	Well Monument Ridge B 43C-08-07-95
Project:	Rockies Region	TVD Reference:	Monument Ridge B 43C-08-07-95 @ 5718.8usft (PLAN
Site:	Monument Ridge B	MD Reference:	Monument Ridge B 43C-08-07-95 @ 5718.8usft (PLAN
Well:	Monument Ridge B 43C-08-07-95	North Reference:	True
Wellbore:	Wellbore #1	Survey Calculation Method:	Minimum Curvature
Design:	Production	Database:	EDM 5000.1 Single User Db

Survey									
MD (usft)	Inc (°)	Azi (azimuth) (°)	TVD (usft)	V. Sec (usft)	N/S (usft)	E/W (usft)	DLeg (°/100usft)	Build (°/100usft)	Turn (°/100usft)
964.0	16.10	330.85	951.4	109.3	96.8	-50.8	0.25	0.23	-0.30
1,006.0	16.13	331.15	991.8	121.0	107.0	-56.4	0.21	0.07	0.71
1,049.0	16.52	331.77	1,033.0	133.0	117.6	-62.2	0.99	0.91	1.44
1,092.0	16.45	332.41	1,074.3	145.2	128.4	-67.9	0.45	-0.16	1.49
1,134.0	16.08	332.56	1,114.6	157.0	138.8	-73.3	0.89	-0.88	0.36
1,177.0	15.51	332.95	1,156.0	168.7	149.2	-78.7	1.35	-1.33	0.91
1,220.0	15.39	332.69	1,197.4	180.2	159.4	-83.9	0.32	-0.28	-0.60
1,262.0	15.21	332.43	1,237.9	191.2	169.3	-89.0	0.46	-0.43	-0.62
1,305.0	15.07	332.69	1,279.4	202.5	179.2	-94.2	0.36	-0.33	0.60
1,390.0	14.99	333.96	1,361.5	224.5	198.9	-104.1	0.40	-0.09	1.49
1,476.0	14.15	333.88	1,444.8	246.1	218.4	-113.6	0.98	-0.98	-0.09
1,561.0	13.40	335.77	1,527.3	266.3	236.7	-122.2	1.03	-0.88	2.22
1,647.0	13.70	335.86	1,610.9	286.4	255.0	-130.5	0.35	0.35	0.10
1,728.0	13.75	335.21	1,689.6	305.6	272.5	-138.5	0.20	0.06	-0.80
1,829.0	13.45	334.49	1,787.8	329.3	294.0	-148.5	0.34	-0.30	-0.71
1,914.0	12.39	331.77	1,870.6	348.3	311.0	-157.1	1.44	-1.25	-3.20
2,000.0	13.75	330.45	1,954.4	367.7	328.0	-166.5	1.62	1.58	-1.53
2,085.0	15.29	331.72	2,036.7	389.1	346.7	-176.8	1.85	1.81	1.49
2,170.0	15.21	332.21	2,118.7	411.4	366.4	-187.3	0.18	-0.09	0.58
2,256.0	14.50	331.50	2,201.8	433.5	385.8	-197.7	0.85	-0.83	-0.83
2,341.0	13.49	330.84	2,284.3	454.0	403.9	-207.6	1.20	-1.19	-0.78
2,426.0	15.18	333.09	2,366.6	475.0	422.4	-217.5	2.09	1.99	2.65
2,512.0	14.28	333.04	2,449.8	496.9	441.9	-227.4	1.05	-1.05	-0.06
2,597.0	13.66	332.60	2,532.3	517.4	460.2	-236.8	0.74	-0.73	-0.52
2,683.0	14.72	330.36	2,615.7	538.5	478.7	-246.8	1.39	1.23	-2.60
2,768.0	14.15	329.13	2,698.0	559.7	497.0	-257.5	0.76	-0.67	-1.45
2,853.0	13.54	328.38	2,780.5	580.0	514.4	-268.1	0.75	-0.72	-0.88

Company:	Ursa Operating Company, LLC	Local Co-ordinate Reference:	Well Monument Ridge B 43C-08-07-95
Project:	Rockies Region	TVD Reference:	Monument Ridge B 43C-08-07-95 @ 5718.8usft (PLAN
Site:	Monument Ridge B	MD Reference:	Monument Ridge B 43C-08-07-95 @ 5718.8usft (PLAN
Well:	Monument Ridge B 43C-08-07-95	North Reference:	True
Wellbore:	Wellbore #1	Survey Calculation Method:	Minimum Curvature
Design:	Production	Database:	EDM 5000.1 Single User Db

Survey										
MD (usft)	Inc (°)	Azi (azimuth) (°)	TVD (usft)	V. Sec (usft)	N/S (usft)	E/W (usft)	DLeg (°/100usft)	Build (°/100usft)	Turn (°/100usft)	
2,939.0	14.41	331.15	2,864.0	600.7	532.3	-278.5	1.28	1.01	3.22	
3,024.0	14.13	330.50	2,946.4	621.7	550.6	-288.7	0.38	-0.33	-0.76	
3,109.0	13.10	329.97	3,029.0	641.7	568.0	-298.7	1.22	-1.21	-0.62	
3,195.0	14.55	332.25	3,112.5	662.2	586.0	-308.6	1.80	1.69	2.65	
3,280.0	14.24	332.78	3,194.8	683.4	604.8	-318.3	0.40	-0.36	0.62	
3,366.0	13.58	333.04	3,278.3	704.0	623.2	-327.7	0.77	-0.77	0.30	
3,451.0	13.04	332.46	3,361.0	723.6	640.6	-336.7	0.65	-0.64	-0.68	
3,536.0	14.11	331.42	3,443.6	743.6	658.2	-346.1	1.29	1.26	-1.22	
3,622.0	13.93	330.80	3,527.1	764.4	676.4	-356.1	0.27	-0.21	-0.72	
3,707.0	12.96	331.64	3,609.7	784.1	693.7	-365.7	1.16	-1.14	0.99	
3,793.0	13.75	331.28	3,693.4	804.0	711.2	-375.2	0.92	0.92	-0.42	
3,878.0	14.63	331.20	3,775.8	824.9	729.4	-385.2	1.04	1.04	-0.09	
3,964.0	14.50	330.76	3,859.0	846.5	748.3	-395.7	0.20	-0.15	-0.51	
4,049.0	13.45	330.19	3,941.5	867.0	766.2	-405.8	1.25	-1.24	-0.67	
4,134.0	14.19	330.14	4,024.1	887.3	783.8	-415.9	0.87	0.87	-0.06	
4,220.0	13.67	330.19	4,107.5	908.0	801.8	-426.2	0.60	-0.60	0.06	
4,305.0	12.39	329.00	4,190.3	927.1	818.3	-435.9	1.54	-1.51	-1.40	
4,390.0	11.16	327.90	4,273.6	944.5	833.1	-444.9	1.47	-1.45	-1.29	
4,476.0	10.20	333.70	4,358.1	960.4	847.0	-452.7	1.67	-1.12	6.74	
4,561.0	9.67	332.60	4,441.8	975.0	860.1	-459.4	0.66	-0.62	-1.29	
4,646.0	7.73	336.34	4,525.8	987.9	871.6	-464.9	2.38	-2.28	4.40	
4,732.0	7.12	335.50	4,611.1	999.0	881.8	-469.5	0.72	-0.71	-0.98	
4,817.0	4.88	345.02	4,695.6	1,007.7	890.1	-472.6	2.87	-2.64	11.20	
4,903.0	3.95	346.96	4,781.4	1,014.1	896.5	-474.2	1.10	-1.08	2.26	
4,988.0	3.65	349.52	4,866.2	1,019.5	902.0	-475.4	0.41	-0.35	3.01	
5,074.0	3.43	349.26	4,952.0	1,024.6	907.2	-476.3	0.26	-0.26	-0.30	
5,159.0	1.85	13.87	5,036.9	1,028.0	911.1	-476.5	2.25	-1.86	28.95	

Company:	Ursa Operating Company, LLC	Local Co-ordinate Reference:	Well Monument Ridge B 43C-08-07-95
Project:	Rockies Region	TVD Reference:	Monument Ridge B 43C-08-07-95 @ 5718.8usft (PLAN
Site:	Monument Ridge B	MD Reference:	Monument Ridge B 43C-08-07-95 @ 5718.8usft (PLAN
Well:	Monument Ridge B 43C-08-07-95	North Reference:	True
Wellbore:	Wellbore #1	Survey Calculation Method:	Minimum Curvature
Design:	Production	Database:	EDM 5000.1 Single User Db

Survey										
MD (usft)	Inc (°)	Azi (azimuth) (°)	TVD (usft)	V. Sec (usft)	N/S (usft)	E/W (usft)	DLeg (°/100usft)	Build (°/100usft)	Turn (°/100usft)	
5,244.0	1.45	88.57	5,121.9	1,028.6	912.4	-475.1	2.38	-0.47	87.88	
5,330.0	1.41	98.29	5,207.9	1,027.4	912.3	-472.9	0.29	-0.05	11.30	
5,415.0	1.19	113.58	5,292.8	1,026.1	911.8	-471.1	0.48	-0.26	17.99	
5,500.0	0.83	117.84	5,377.8	1,024.9	911.1	-469.7	0.43	-0.42	5.01	
5,586.0	0.57	107.12	5,463.8	1,024.1	910.7	-468.8	0.34	-0.30	-12.47	
5,671.0	0.53	126.06	5,548.8	1,023.4	910.4	-468.1	0.22	-0.05	22.28	
5,757.0	0.66	147.46	5,634.8	1,022.6	909.7	-467.5	0.30	0.15	24.88	
5,842.0	0.83	158.80	5,719.8	1,021.5	908.7	-467.0	0.26	0.20	13.34	
5,927.0	1.10	159.11	5,804.8	1,020.1	907.4	-466.5	0.32	0.32	0.36	
6,013.0	1.19	161.30	5,890.8	1,018.4	905.8	-465.9	0.12	0.10	2.55	
6,098.0	0.62	303.47	5,975.8	1,017.9	905.2	-466.0	2.03	-0.67	167.26	
6,184.0	0.79	274.04	6,061.8	1,018.6	905.5	-467.0	0.46	0.20	-34.22	
6,269.0	0.79	242.78	6,146.8	1,019.0	905.3	-468.1	0.50	0.00	-36.78	
6,355.0	1.01	229.68	6,232.8	1,018.8	904.5	-469.2	0.35	0.26	-15.23	
6,440.0	1.19	232.07	6,317.7	1,018.5	903.5	-470.5	0.22	0.21	2.81	
6,525.0	1.49	230.82	6,402.7	1,018.2	902.2	-472.0	0.35	0.35	-1.47	
6,611.0	1.67	221.49	6,488.7	1,017.5	900.6	-473.7	0.36	0.21	-10.85	
6,696.0	1.58	227.70	6,573.6	1,016.8	898.9	-475.4	0.23	-0.11	7.31	
6,781.0	1.63	224.10	6,658.6	1,016.2	897.2	-477.1	0.13	0.06	-4.24	
6,867.0	1.76	203.10	6,744.6	1,015.0	895.1	-478.5	0.73	0.15	-24.42	
6,952.0	1.93	189.52	6,829.5	1,013.0	892.5	-479.2	0.55	0.20	-15.98	
6,995.0	1.98	189.30	6,872.5	1,011.9	891.1	-479.5	0.12	0.12	-0.51	
Projection to Bit										
7,071.0	1.98	189.30	6,948.5	1,009.8	888.5	-479.9	0.00	0.00	0.00	

Company:	Ursa Operating Company, LLC	Local Co-ordinate Reference:	Well Monument Ridge B 43C-08-07-95
Project:	Rockies Region	TVD Reference:	Monument Ridge B 43C-08-07-95 @ 5718.8usft (PLAN
Site:	Monument Ridge B	MD Reference:	Monument Ridge B 43C-08-07-95 @ 5718.8usft (PLAN
Well:	Monument Ridge B 43C-08-07-95	North Reference:	True
Wellbore:	Wellbore #1	Survey Calculation Method:	Minimum Curvature
Design:	Production	Database:	EDM 5000.1 Single User Db

Design Annotations				
Measured Depth (usft)	Vertical Depth (usft)	Local Coordinates		Comment
		+N/-S (usft)	+E/-W (usft)	
6,995.0	6,872.5	891.1	-479.5	Projection to Bit

Checked By: _____
 Approved By: _____
 Date: _____

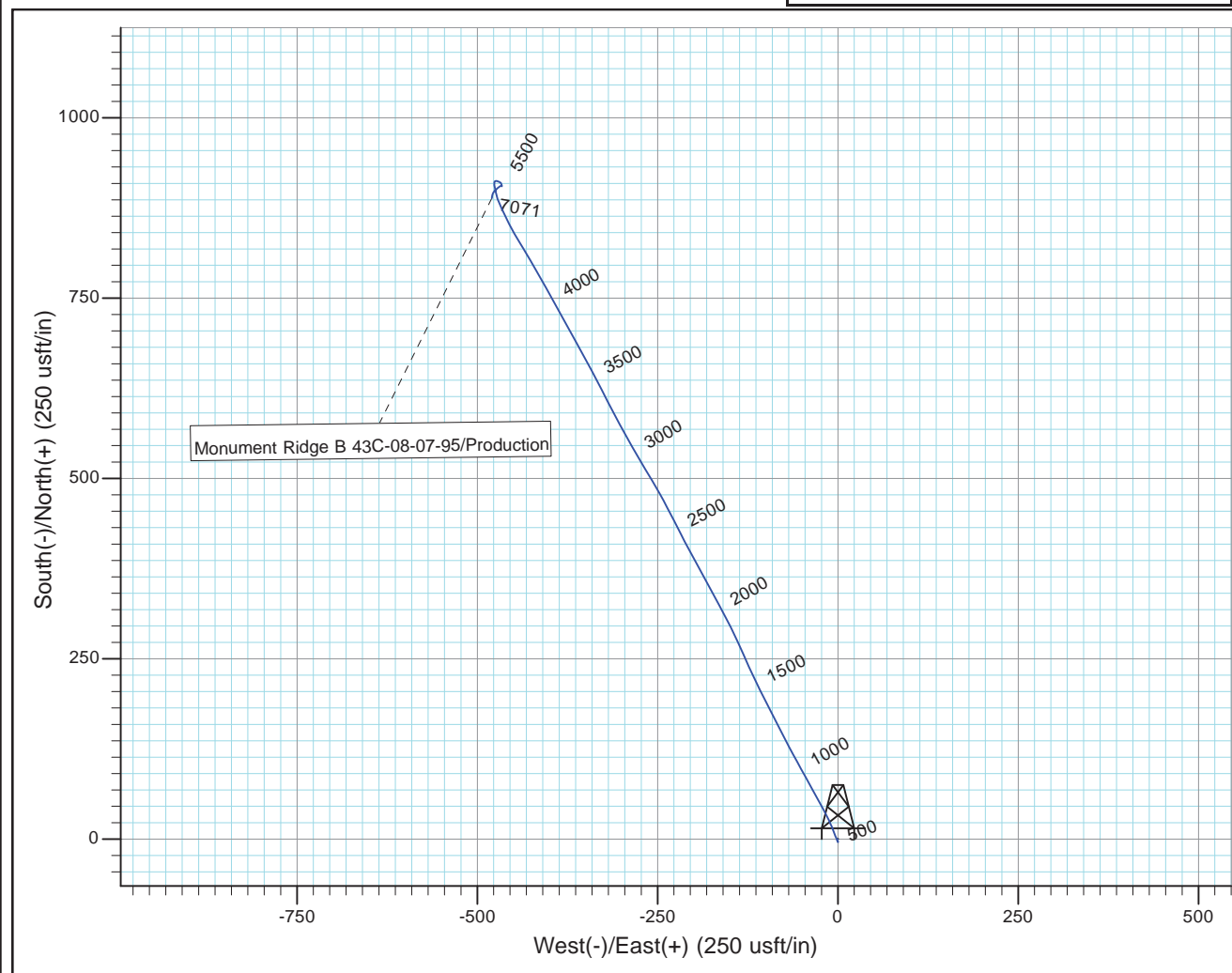
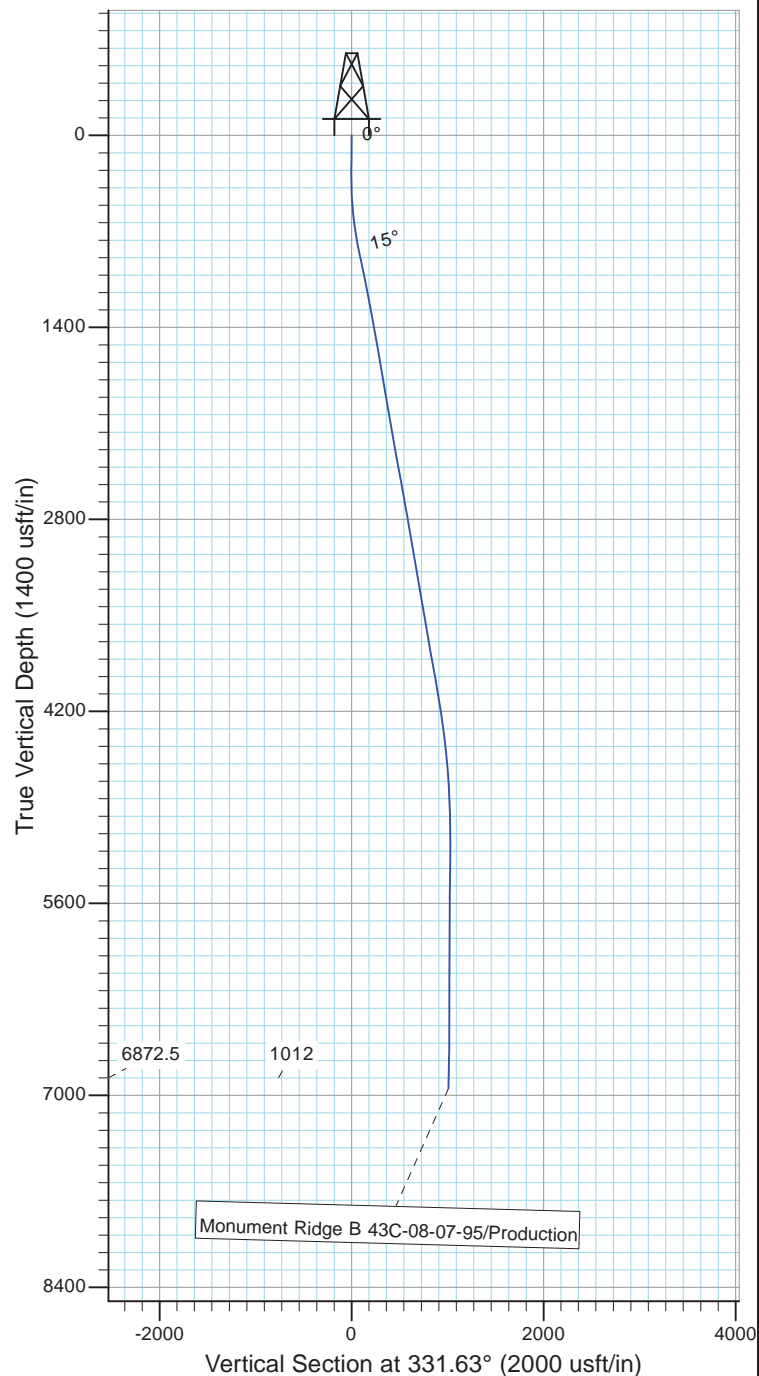


Project: Rockies Region
Site: Monument Ridge B
Well: Monument Ridge B 43C-08-07-95
Wellbore: Wellbore #1
Design: Production



Azimuths to True North
Magnetic North: 9.78°

Magnetic Field
Strength: 51777.9snT
Dip Angle: 65.57°
Date: 11/17/2015
Model: IGRF2010



Design: Production (Monument Ridge B 43C-08-07-95/Wellbore #1)

Created By: Matthew Linton

Date: 13:18, January 04 20

THIS SURVEY IS CORRECT TO THE BEST OF
MY KNOWLEDGE AND IS SUPPORTED
BY ACTUAL FIELD DATA