

Reclamation Inspection

4/15/2016

Operator: HRM

Location ID: 313925

Morgan County, CO

NWSE Section 5 T6N R60W

Aaron Trujillo

Reclamation Specialist

COGCC



Figure 1: Current aerial imagery (2013) showing overview of location.



Figure 2: Photo taken at access road entrance and Morgan CR-2. Photo shows original access gate to the property on left side of image, and operator entrance on top right of image.



Figure 3: Photo taken at access road entrance, facing west. Photo shows access road leading to location.

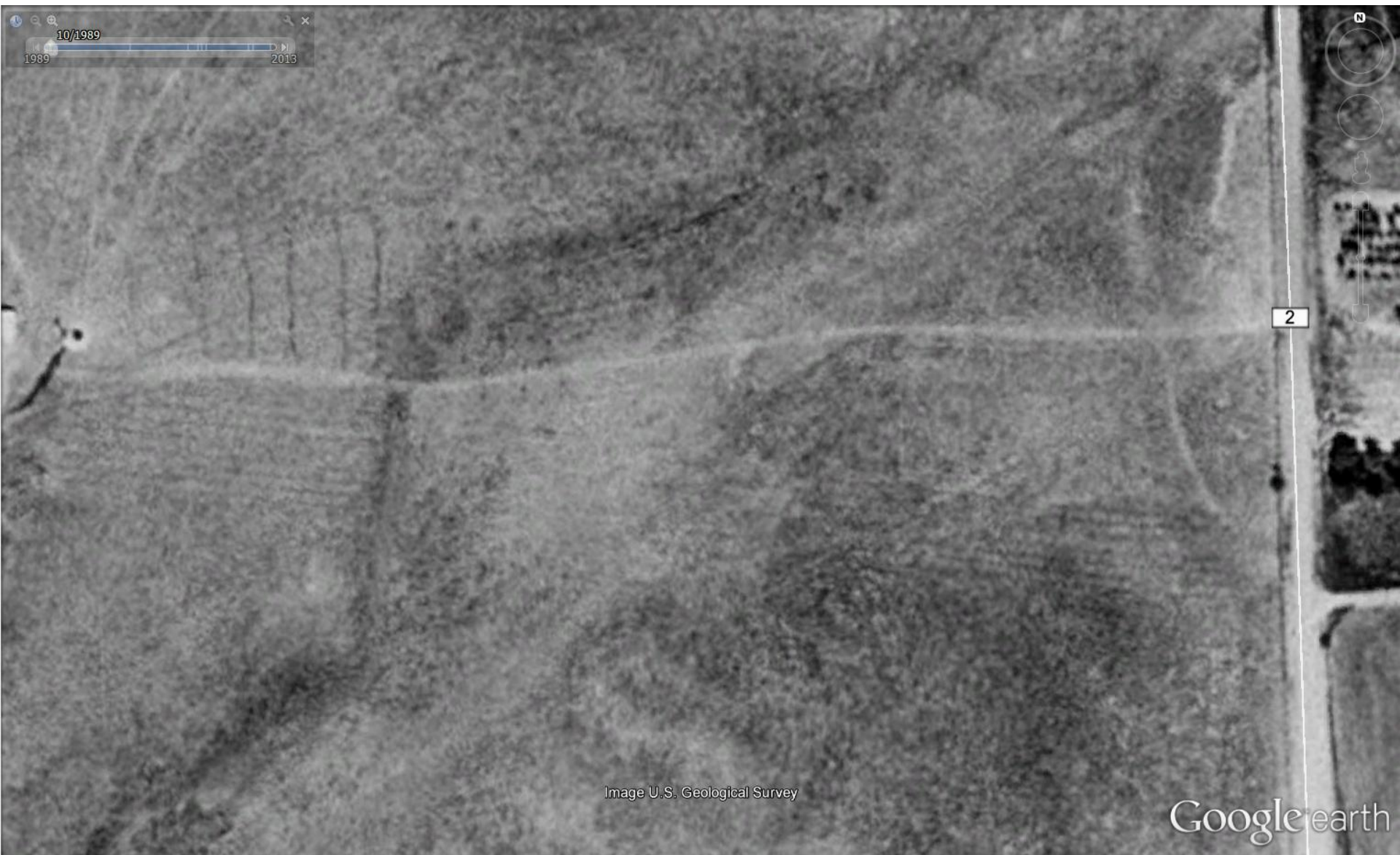


Figure 4: 1989 Aerial imagery of original two-track road pre-oil and gas disturbance on location 313925.

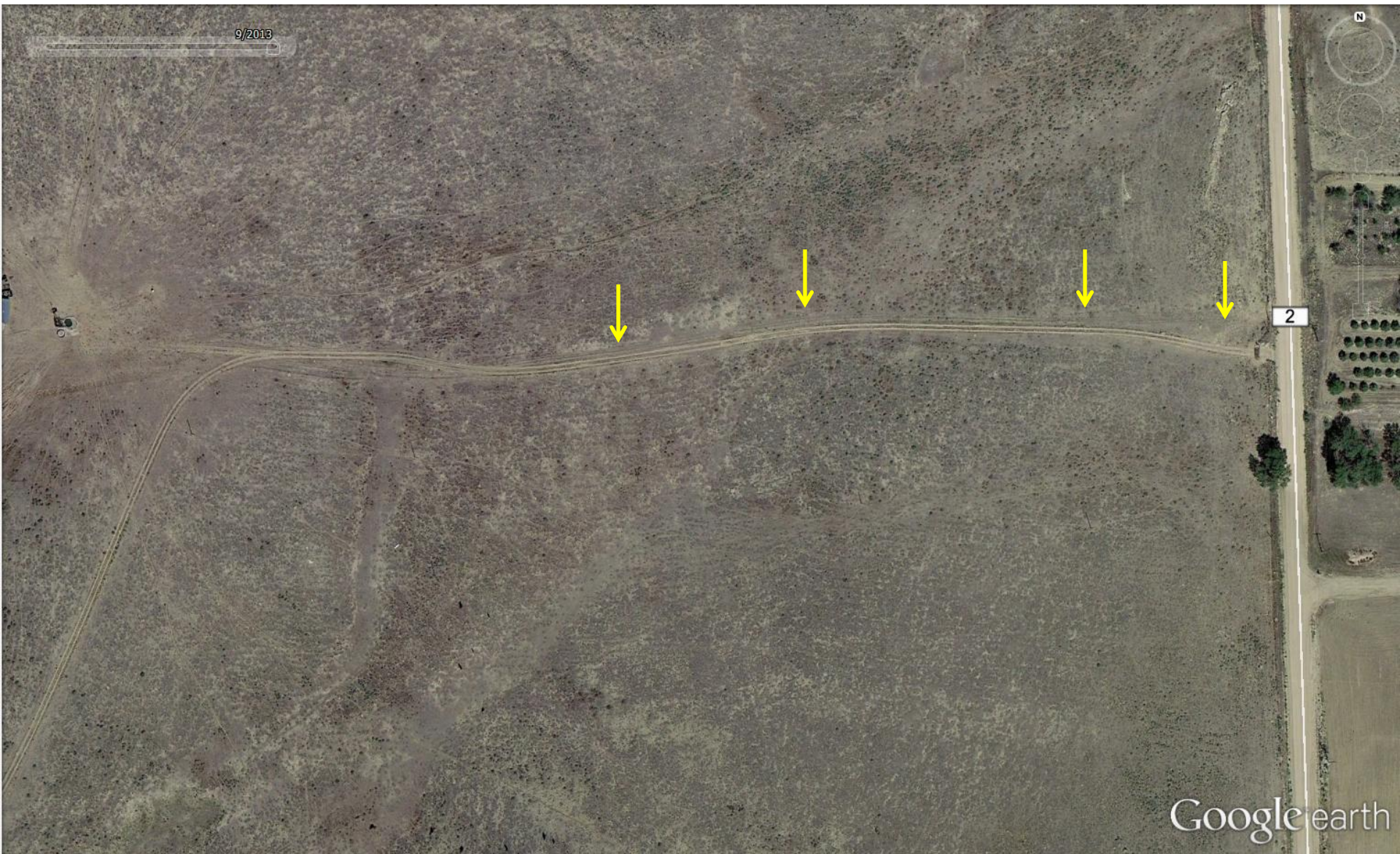


Figure 5: Most current aerial imagery (2013) of access road. Image shows lease road to location 313925 was constructed adjacent to the original two-track road (indicated by arrows). This is also evident in Figures 6 and 7.



Figure 6: Photo taken from access road, facing west. Photo shows current access road (left), and pre-existing two-track (right)



Figure 7: Photo taken from access road, facing west. Photo shows access road (left), and pre-existing two-track (right).



Figure 8: Photo taken from access road. Photo shows gravel on road.



Figure 9: Photo taken from the north end of the location, facing southeast. Photo shows equipment and facilities have been removed.



Figure 10: Photo taken from the north end of the location, facing south. Photo shows equipment and facilities have been removed.



Figure 11: Photo taken from the north end of the location, facing southwest. Photo shows equipment and facilities have been removed.



04.15.2016 15:34

Figure 12: Photo taken from the north end of the location, facing west. Photo shows equipment and facilities have been removed.



Figure 13: Photo taken from the west end of the location. Photo shows gravel remaining on location.



Figure 14: Photo taken from location. Location requires decompaction.



04.15.2016 15:45

Figure 15: Photo taken from the southwest corner of the location, facing north. Photo show areas the location at higher risk for erosion.



Figure 16: Photo taken from the west end of the location, facing east. Multiple rills forming on slope.



Figure 17: Photo taken from the north end of the location, facing north. Photo shows additional disturbance created during the removal of equipment/facilities outside of the location. Rule 1002.e(4) requires all vehicles used by the operator, contractors, and other parties associate with the well shall not travel outside of the original access road boundary.