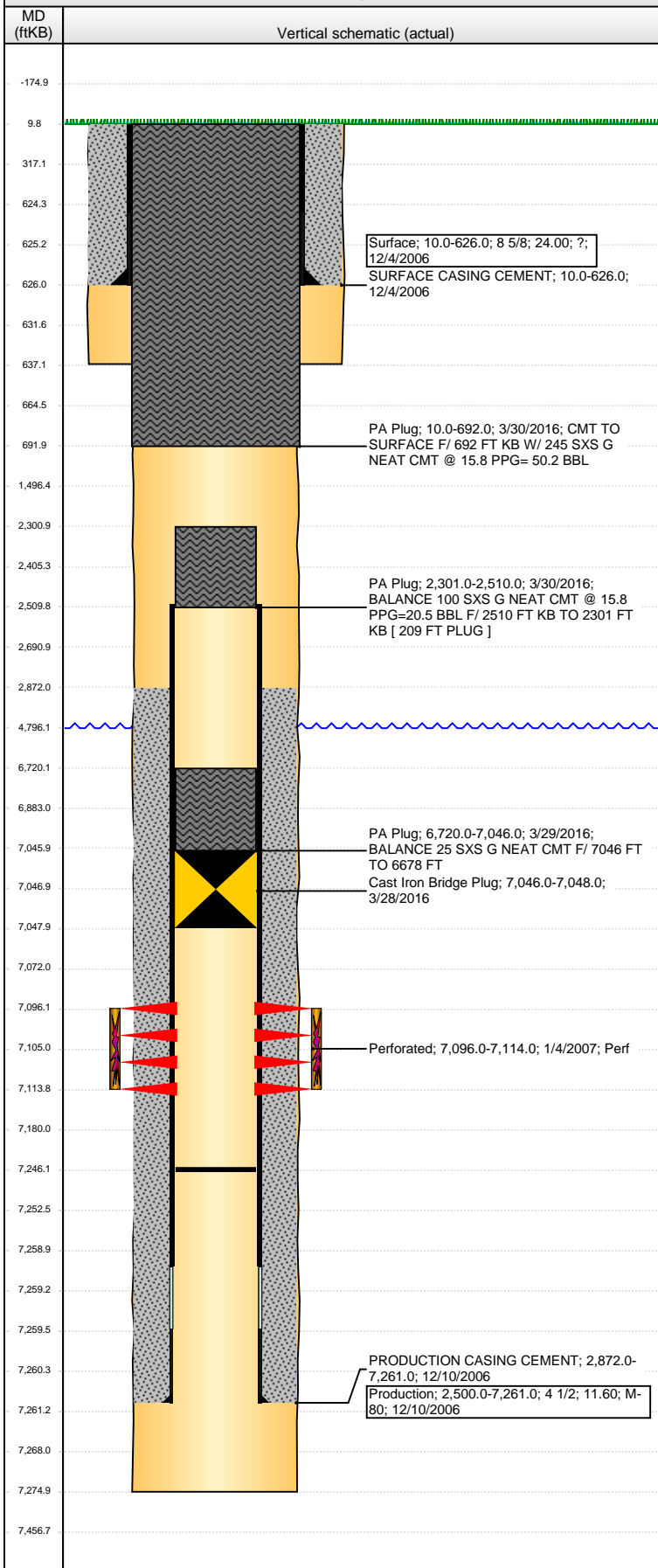


Well Name: DESHAZO 24-41

VERTICAL - ORIGINAL HOLE, 4/26/2016 1:36:11 PM



Well Header			
API	Business Unit	District	Well Config
05-123-23922	DJ BASIN	15	VERTICAL
Original KB Elevation (ft)	KB - GL / MSL (ftKB)	Spud Date	P & A Date
4,761	10.00	12/3/2006	3/28/2016
Comment			
Directions To Well			
CR'S 23 3/4 & 66, E 1/10, N ON EAST SIDE OF BATTERY 4/10, E 100' INTO			
Congressional Location			
Quarter 1	Quarter 2	Quarter 3	Quarter 4
SE	NE	SE	SE
Section	Township	Twonshp N...	Range
24	6 N		67
Rng E/W Dir			
W			
Bottom Hole Location			
North-South Distance (ft)	From N or S Line	East-West Distance (ft)	From E or W Line
Plug Back Total Depths			
Date	Depth (ftKB)	Method	Com
12/10/2006	7,246.0	CASING TALLY	FLOAT COLLAR ON CASING TALLY
1/3/2007	7,222.0	CASED HOLE LOG	DEPTH LOGGER ON CBL
6/29/2007	7,246.0	TAG	CLEAN OUT TO LAND TUBING
Wellbore Sections			
Section Des	Size (in)	Act Top, MD (ftKB)	Act Btm, MD (ftKB)
SURFACE	12 1/4	10.0	637.0
PRODUCTION	7 7/8	637.0	7,275.0
Zone Statuses			
Zone Name	Status Date	Status	Fluid Type
CODELL	5/15/2007	PR	
CODELL	3/28/2016	P&A	
Job	Prod Method		
DRILLING/CO...			
ABANDON WE...			
Casing Strings			
Surface, 626.0ftKB			
Casing Description	Run Date	OD (in)	W/Len (L...)
Surface	12/4/2006	8 5/8	24.00
Grade	Top, MD (ft...)	MD (ftKB)	
?	10.0	626.0	
Production, 7,261.0ftKB			
Casing Description	Run Date	OD (in)	W/Len (L...)
Production	12/10/2006	4 1/2	11.60
Grade	Top, MD (ft...)	MD (ftKB)	
M-80	10.0	7,261.0	
Cement			
Description	Top Depth (ftKB)	Bottom Depth (ftKB)	
SURFACE CASING CEMENT	10.0	626.0	
PRODUCTION CASING CEMENT	2,872.0	7,261.0	
PA Plug	6,720.0	7,046.0	
PA Plug	2,301.0	2,510.0	
PA Plug	10.0	692.0	
Tubing Strings			
Tubing Description	Run Date	String...	ID (in)
Tubing	6/29/2007	2 3/8	
Wt (lb/ft)	Grade	Len (ft)	Set De...
		7,053.00	
Perforation Data			
Zone	Bnch/St g	Entered Shot Total	Top (ftKB)
CODELL, ORIGINAL HOLE		72	7,096.00
			Btm (ftKB)
			7,114.00
			Date
			1/4/2007
Stimulations & Treatments			
Date	Zone	Primary Job Type	
1/5/2007	CODELL, ORIGINAL HOLE	DRILLING/COMPLETION - ORIGINAL	
Technical Result		Tech Result Details	Tech Result Note
Comment			
Other In Hole			
Run Date	Des	OD (in)	Top (ftKB)
3/28/2016	Cast Iron Bridge Plug	3.99	7,046.0
			Btm (ftKB)
			7,048.0
Logs			
Date	Type	Top, MD (ftKB)	Btm, MD (ftKB)
12/10/2006	COMPENSATED DENSITY	3,000.0	7,277.0
12/10/2006	INDUCTION	626.0	7,297.0
1/3/2007	CBL/CCL/GR	2,800.0	7,220.0
10/20/2015	GYRO	10.0	7,000.0