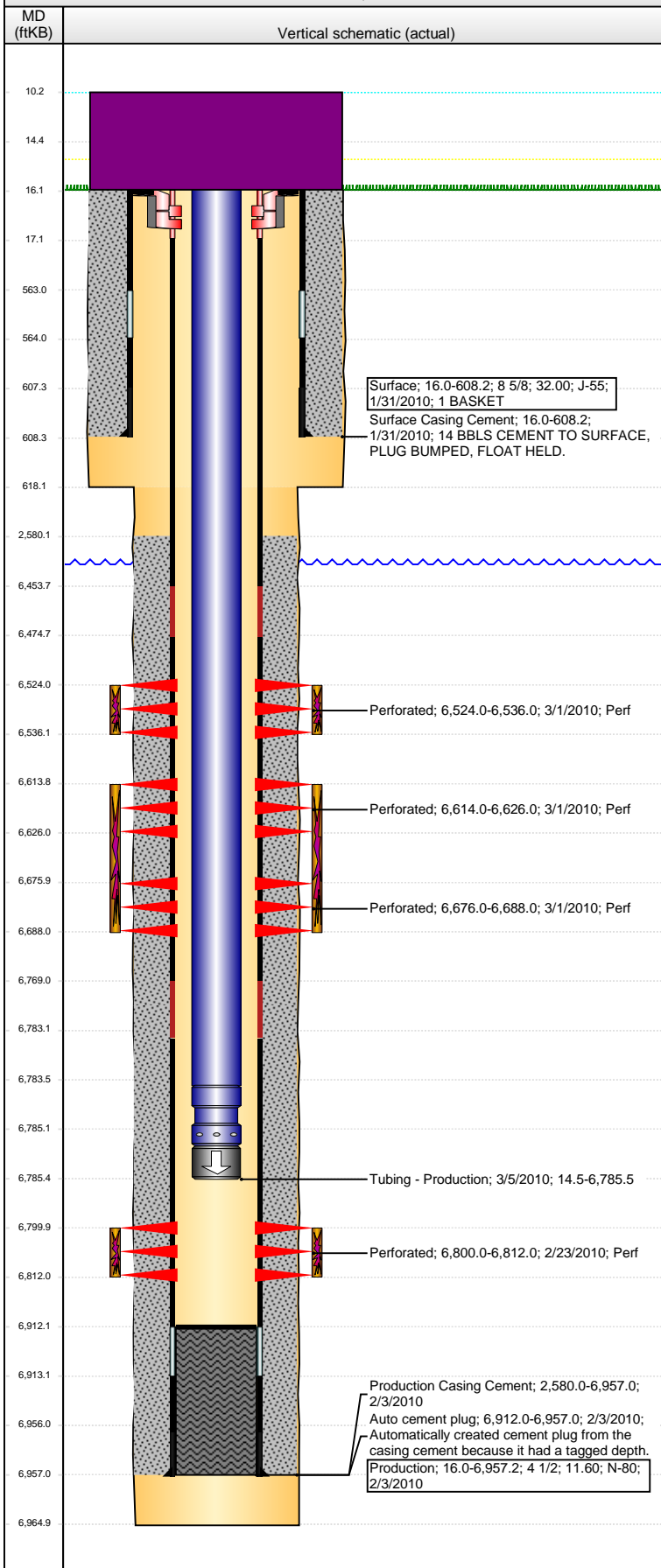


Well Name: MERCER C11-30D

DEVIATED - ORIGINAL HOLE, 4/27/2016 2:15:22 PM

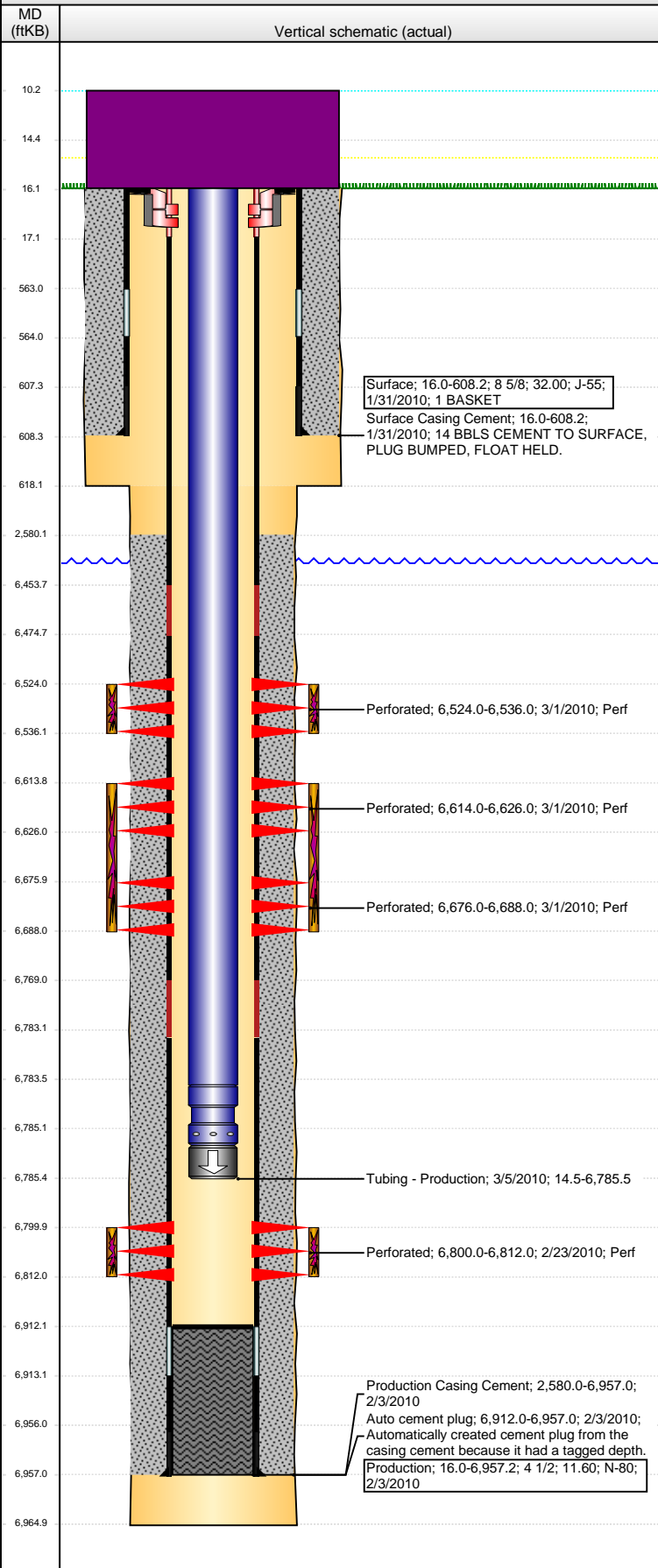


Well Header									
API 05-123-30042		Business Unit DJ BASIN		District 15		Well Config DEVIATED			
Original KB Elevation (ft) 4,640		KB - GL / MSL (ftKB) 16.00		Spud Date 1/30/2010		P & A Date			
Comment NOTE: 318A.e. LOCATION. TD is 9' DEEPER THAN PERMITTED DEPTH. OK PER REGULATORY DEPT.									
Directions To Well WCR 48 & WCR 57, NORTH 0.10 MILES, EAST 250'.									
Congressional Location									
Quarter 1	Quarter 2	Quarter 3 SW	Quarter 4 SW	Section 2	Township 4 N	Twnshp N...	Range 64	Rng E/W Dir W	
Bottom Hole Location									
North-South Distance (ft) 75.0		From N or S Line FNL		East-West Distance (ft) 75.0		From E or W Line FWL			
Plug Back Total Depths									
Date	Depth (ftKB)	Method			Com				
1/3/2010	6,912.0	CASING TALLY			C/O TO PBTD AFTER DRILL PLUGS / PUMPED O...				
2/17/2010	6,863.0	CASED HOLE LOG							
3/5/2010	6,912.0	TAG							
Wellbore Sections									
Section Des			Size (in)		Act Top, MD (ftKB)		Act Btm, MD (ftKB)		
SURFACE			12 1/4		16.0		618.0		
PRODUCTION			7 7/8		618.0		6,965.0		
Zone Statuses									
Zone Name	Status Date	Status	Fluid Type		Job	Prod Method			
NIOBRARA	3/3/2010	PR			DRILLING/CO...				
CODELL	3/3/2010	PR			DRILLING/CO...				
Casing Strings									
Surface, 608.2ftKB									
Casing Description Surface		Run Date 1/31/2010	OD (in) 8 5/8	Wt/Len (l... 32.00	Grade J-55	Top, MD (ft... 16.0	MD (ftKB) 608.2		
Production, 6,957.2ftKB									
Casing Description Production		Run Date 2/3/2010	OD (in) 4 1/2	Wt/Len (l... 11.60	Grade N-80	Top, MD (ft... 16.0	MD (ftKB) 6,957.2		
Cement									
Description Surface Casing Cement					Top Depth (ftKB) 16.0		Bottom Depth (ftKB) 608.2		
Description Production Casing Cement					Top Depth (ftKB) 2,580.0		Bottom Depth (ftKB) 6,957.0		
Tubing Strings									
Tubing Description Tubing - Production		Run Date 3/5/2010	String... 2 3/8	ID (in) 1.995	Wt (lb/ft) 4.70	Grade J-55	Len (ft) 6,771.01	Set De...	
Tubing Components									
Item Des		OD (in)	Wt (lb/ft)	Grade	Jts	Len (ft)	Btm (ftKB)	Btm (TVD) (ftKB)	
Tubing		2 3/8	4.70	J-55	219	6,769.11	6,783.6		
Pump Seating		2 3/8	4.70	N-80	1	1.60	6,785.2		
Nipple									
Bit Sub w/Float		2 3/8	4.70	N-80	1	0.30	6,785.5		
Perforation Data									
Zone		Bnch/St g	Entered Shot Total	Top (ftKB)		Btm (ftKB)		Date	
NIOBRARA, ORIGINAL HOLE		A	24	6,524.00		6,536.00		3/1/2010	
NIOBRARA, ORIGINAL HOLE		B	24	6,614.00		6,626.00		3/1/2010	
NIOBRARA, ORIGINAL HOLE		C	24	6,676.00		6,688.00		3/1/2010	
CODELL, ORIGINAL HOLE		01	48	6,800.00		6,812.00		2/23/2010	

Well Name: MERCER C11-30D

DEVIATED - ORIGINAL HOLE, 4/27/2016 2:15:24 PM

Stimulations & Treatments



Date	Zone	Primary Job Type
3/1/2010	CODELL, ORIGINAL HOLE	DRILLING/COMPLETION - ORIGINAL

Technical Result	Tech Result Details	Tech Result Note
Success	According to Plan	

Comment
CODELL FRAC USING BJS VISTAR 24/22. IWP: CSG-247# / SURFCSG-18#. REV STEP RATE RESULTS: NWB-425# / PERF-103# / TUBULAR-297# --> TOT FRICTION = 825#; 25 EFF OPEN PERFS. DUE TO HIGH 5-MIN LEAKOFF, DESIGN WAS CHANGED FROM VISTAR 22/20 & 18 BPM TO VISTAR 24/22 & 25 BPM. TREATMENT OTHERWISE PUMPED AS DESIGNED. PRESSURE RESPONSE FROM FORMATION WAS SLIGHTLY POSITIVE (NOLTE SLOPE = + 0.05).

Date	Zone	Primary Job Type
3/1/2010	NIOBRARA, ORIGINAL HOLE	DRILLING/COMPLETION - ORIGINAL

Technical Result	Tech Result Details	Tech Result Note
Success	According to Plan	

Comment
NIOBRARA BENCHES "B" & "C" FRAC USING BJS VISTAR 18. TREATMENT PUMPED AS DESIGNED. PRESSURE RESPONSE FROM FORMATION WAS POSITIVE (NOLTE SLOPE = + 0.1).

Date	Zone	Primary Job Type
3/1/2010	NIOBRARA, ORIGINAL HOLE	DRILLING/COMPLETION - ORIGINAL

Technical Result	Tech Result Details	Tech Result Note
Success	According to Plan	

Comment
NIOBRARA BENCH "A" FRAC USING BJS VISTAR 18. TREATMENT PUMPED AS DESIGNED. PRESSURE RESPONSE FROM FORMATION WAS POSITIVE (NOLTE SLOPE = + 0.22).

Other In Hole				
Run Date	Des	OD (in)	Top (ftKB)	Btm (ftKB)

Logs				
Date	Type	Top, MD (ftKB)	Btm, MD (ftKB)	
1/3/2010	Caliper/Comp. Density/Neutron/GR/SP/ML	2,550.0	6,965.0	
1/3/2010	DIL/GR/SP/Caliper	608.0	6,965.0	
2/17/2010	CBL/CCL/GR	2,400.0	6,862.0	