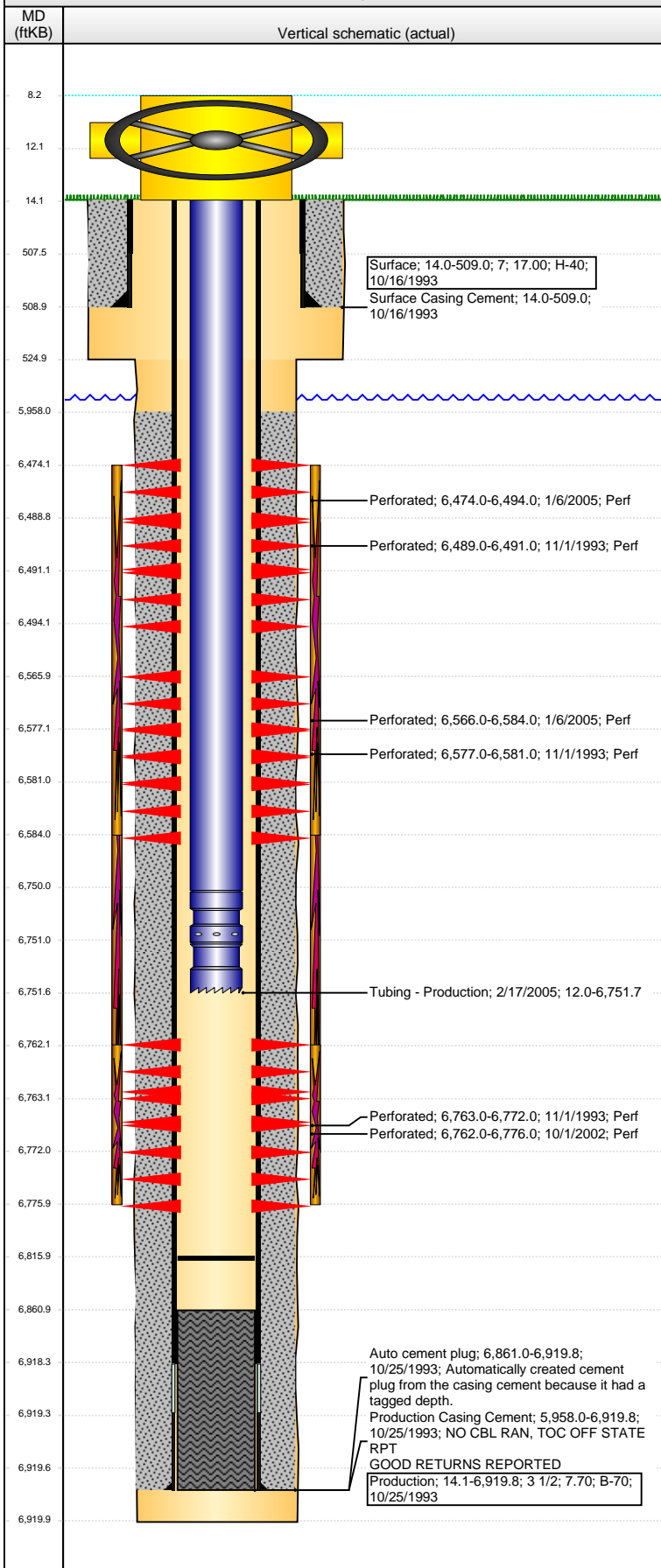


Well Name: BOOT HILLS FARMS 02-12

VERTICAL - ORIGINAL HOLE, 4/27/2016 9:48:53 AM



Well Header

API 05-123-17473	Business Unit DJ BASIN	District 15	Well Config VERTICAL
Original KB Elevation (ft) 4,643	KB - GL / MSL (ftKB) 14.00	Spud Date 10/16/1993	P & A Date
Comment TD DISCREPANCY: ST RPT 6920', DRILLER'S TD 6885', LOGGER'S TD 6820' & 6920', USED DEEPEST DEPTH			
SURF & PROD HOLE SIZE DISCREPANCY: DRILL RPTS - SFC 9 7/8", PROD 6 1/4"; ST RPT- SFC 12 1/4", PROD 7 7/8"			

Directions To Well

Congressional Location

Quarter 1	Quarter 2	Quarter 3	Quarter 4	Section	Township	Twship N...	Range	Rng E/W Dir
		NW	SW	2	4	N	64	W

Bottom Hole Location

North-South Distance (ft)	From N or S Line	East-West Distance (ft)	From E or W Line

Plug Back Total Depths

Date	Depth (ftKB)	Method	Com
11/1/1993	6,861.0	CASED HOLE LOG	DEPTH LOGGER ON CBL
12/13/2002	6,822.0	TAG	TAGGED FILL
2/17/2005	6,816.0	TAG	CLEAN OUT

Wellbore Sections

Section Des	Size (in)	Act Top, MD (ftKB)	Act Btm, MD (ftKB)
SURFACE	9 7/8	14.0	525.0
PRODUCTION	6 1/4	525.0	6,920.0

Zone Statuses

Zone Name	Status Date	Status	Fluid Type	Job	Prod Method
NIOBRARA	11/9/1993	PR		DRILLING/CO...	
NIOBRARA	1/11/2005	PR		RE-FRAC, 12/3...	
NIOBRARA	2/19/2005	PR		COMMINGLE...	
CODELL	11/9/1993	PR		DRILLING/CO...	
CODELL	10/10/2002	PR		RE-FRAC, 9/30...	
CODELL	1/4/2005	SI		RE-FRAC, 12/3...	
CODELL	2/19/2005	PR		COMMINGLE...	

Casing Strings

Surface, 509.0ftKB

Casing Description	Run Date	OD (in)	Wt/Len (L...)	Grade	Top, MD (ft...)	MD (ftKB)
Surface	10/16/1993	7	17.00	H-40	14.0	509.0

Production, 6,919.8ftKB

Casing Description	Run Date	OD (in)	Wt/Len (L...)	Grade	Top, MD (ft...)	MD (ftKB)
Production	10/25/1993	3 1/2	7.70	B-70	14.0	6,919.8

Cement

Description	Top Depth (ftKB)	Bottom Depth (ftKB)
Surface Casing Cement	14.0	509.0
Description	Top Depth (ftKB)	Bottom Depth (ftKB)
Production Casing Cement	5,958.0	6,919.8

Tubing Strings

Tubing Description	Run Date	String...	ID (in)	Wt (lb/ft)	Grade	Len (ft)	Set De...
Tubing - Production	2/17/2005	2 1/16	1.751	3.75	J-55	6,739.72	

Tubing Components

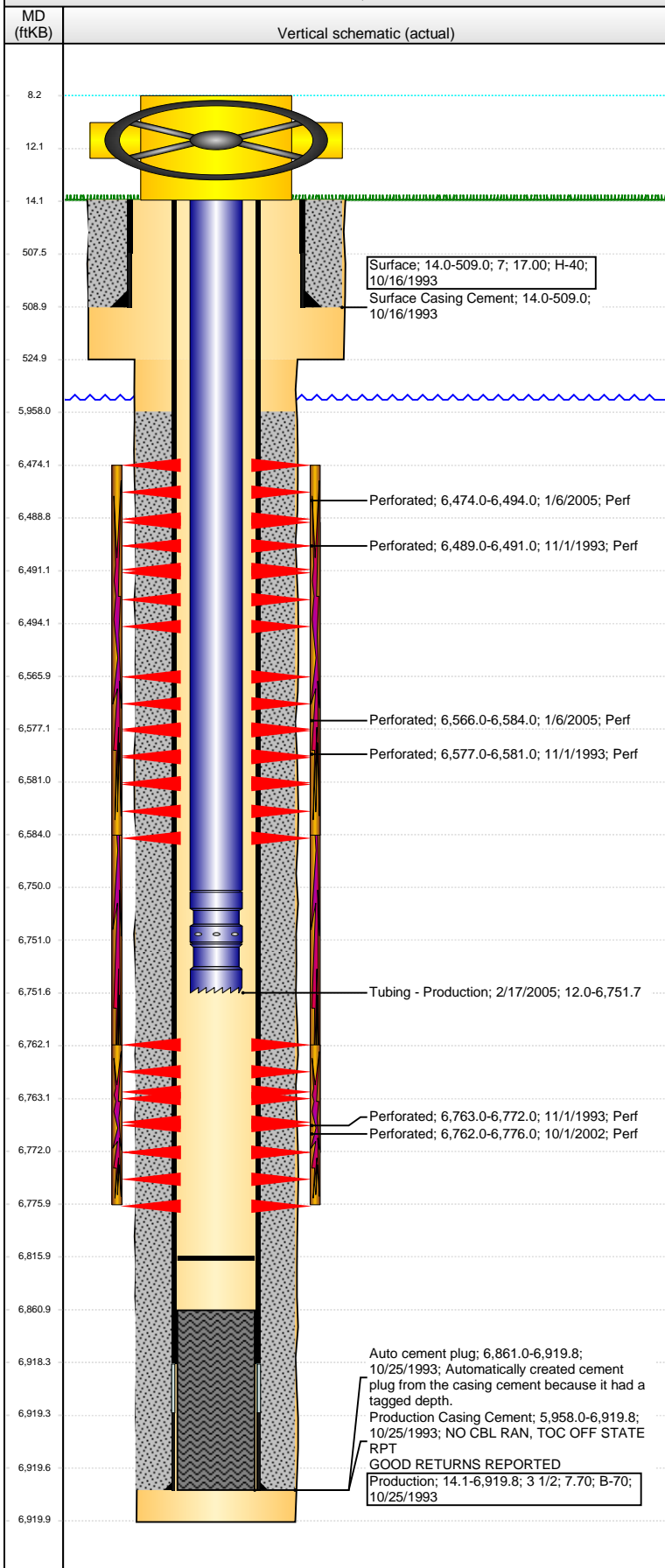
Item Des	OD (in)	Wt (lb/ft)	Grade	Jts	Len (ft)	Btm (ftKB)	Btm (TVD) (ftKB)
Tubing	2 1/16	3.75	J-55	208	6,738.02	6,750.0	
Pump Seating Nipple	2 1/16				1.00	6,751.0	
Notched collar	2 1/16				0.70	6,751.7	

Perforation Data

Zone	Bnch/St g	Entered Shot Total	Top (ftKB)	Btm (ftKB)	Date
NIOBRARA, ORIGINAL HOLE		120	6,474.00	6,494.00	1/6/2005
NIOBRARA, ORIGINAL HOLE		2	6,489.00	6,491.00	11/1/1993
NIOBRARA, ORIGINAL HOLE		108	6,566.00	6,584.00	1/6/2005

Well Name: BOOT HILLS FARMS 02-12

VERTICAL - ORIGINAL HOLE, 4/27/2016 9:48:56 AM



Perforation Data					
Zone	Brnch/St g	Entered Shot Total	Top (ftKB)	Btm (ftKB)	Date
NIOBARRA, ORIGINAL HOLE		4	6,577.00	6,581.00	11/1/1993
CODELL, ORIGINAL HOLE		60	6,762.00	6,776.00	10/1/2002
CODELL, ORIGINAL HOLE		9	6,763.00	6,772.00	11/1/1993

Stimulations & Treatments			
Date	Zone	Primary Job Type	
11/4/1993	NIOBARRA-CODELL, ORIGINAL HOLE	DRILLING/COMPLETION - ORIGINAL	
Technical Result		Tech Result Details	Tech Result Note

Comment			
LIMITED ENTRY FRAC			
Date	Zone	Primary Job Type	
10/7/2002	CODELL, ORIGINAL HOLE	RE-FRAC	
Technical Result		Tech Result Details	Tech Result Note

Comment			
Date	Zone	Primary Job Type	
1/10/2005	NIOBARRA, ORIGINAL HOLE	RE-FRAC	
Technical Result		Tech Result Details	Tech Result Note

Other In Hole				
Run Date	Des	OD (in)	Top (ftKB)	Btm (ftKB)

Logs			
Date	Type	Top, MD (ftKB)	Btm, MD (ftKB)
10/23/1993	COMPENSATED DENSITY	4,150.0	6,818.0
10/23/1993	INDUCTION	505.0	6,818.0
11/1/1993	GAMMA RAY	6,298.0	6,852.0