

#### NOTES:

- ▲ INDICATES FOUND SECTION CORNER
- INDICATES CALCULATED CORNER
- DRAWING LATITUDE AND LONGITUDE COORDINATES ARE NAD 83 (CORS 96) (EPOCH:2002)
- ELEVATION BASED ON NAVD88 (GEOID09)
- BASIS OF BEARING DERIVED FROM COLORADO COORDINATE SYSTEM 1983 NORTH ZONE UNLESS OTHERWISE NOTED.
- ALL MEASURED DISTANCES ARE GRID. COMBINED SCALE FACTOR: .99974499
- OPERATOR: ROB WILSON / PDOP = 2.0
- SEE ADDENDUM TO WELL LOCATION CERTIFICATE FOR EXISTING IMPROVEMENTS WITHIN 500' OF THE WELL PAD.
- WELL FOOTAGES ARE MEASURED AT RIGHT ANGLES TO THE SECTION LINES.
- THE BOTTOM OF HOLE BEARS S01°54'46"E, 9691' FROM THE ENTRY POINT.

#### NEAREST CULTURAL ITEMS:

BUILDING: 5280'+  
 BUILDING UNIT: 5280'+  
 HIGH OCCUPANCY BUILDING UNIT: 5280'+  
 DESIGNATED OUTSIDE ACTIVITY AREA: 5280'+  
 PUBLIC ROAD: 5280'+  
 ABOVE GROUND UTILITY: ±2680' SW  
 RAILROAD: 5280'+  
 PROPERTY LINE: ±231' S

#### WELL PAD - STATE NORTH PLATTE T-36

LATHAM U41-1-12XRLNC  
 WELL LOCATION CERTIFICATE  
 231' FSL & 1105' FEL SESE (SURFACE)  
 SECTION 36, T5N, R63W, 6TH P.M.  
 531' FNL & 480' FEL (LOT 1) NENE (ENTRY POINT)  
 SECTION 1, T4N, R63W, 6TH P.M.  
 470' FSL & 470' FEL SESE (BOTTOM)  
 SECTION 12, T4N, R63W, 6TH P.M.  
 WELD COUNTY, COLORADO



410 17th Street, Suite 1400  
 Denver, Colorado 80202



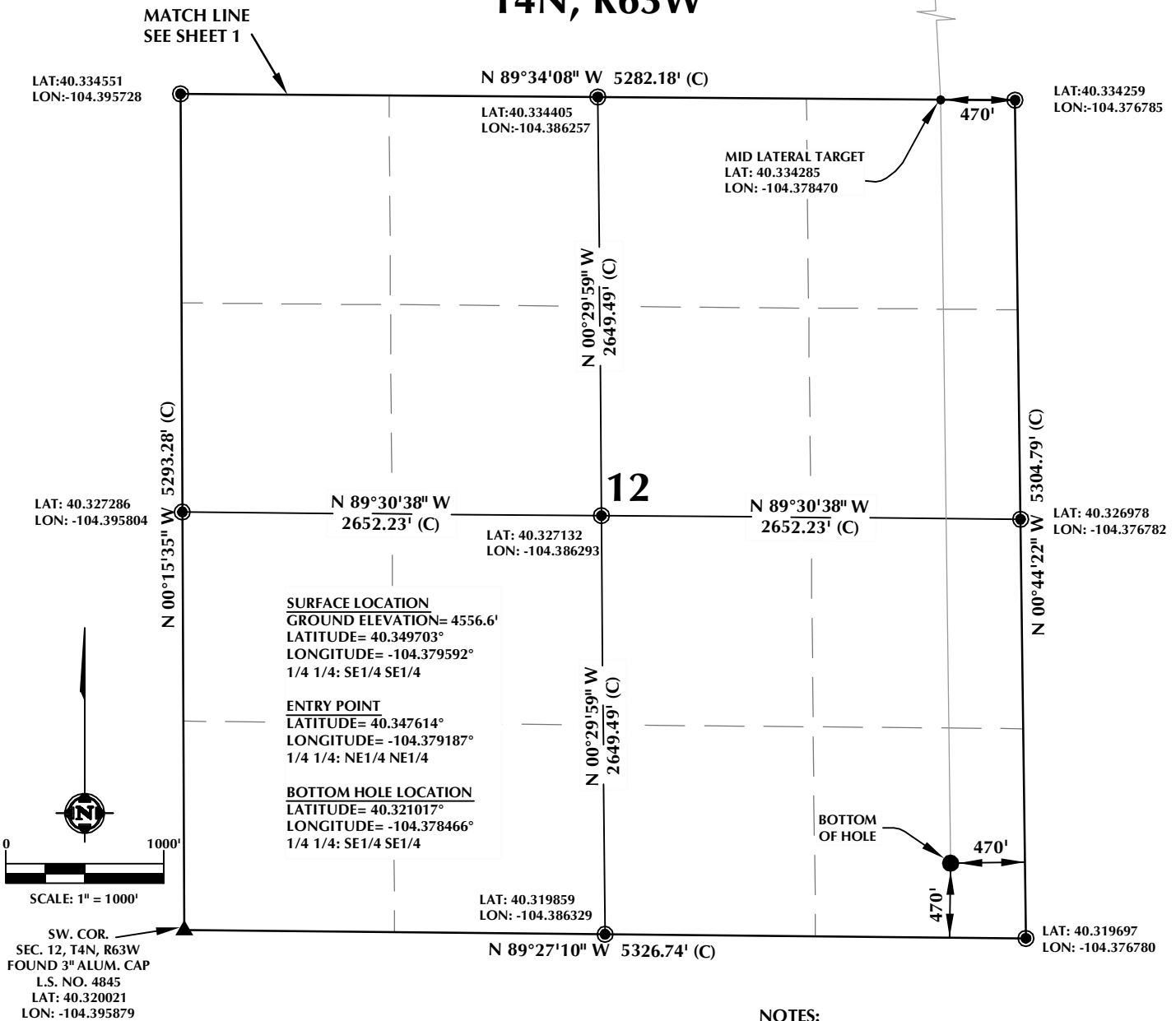
#### CONSULTING, LLC

SHERIDAN OFFICE  
 1095 Saberton Avenue  
 Sheridan, Wyoming 82801  
 Phone 307-674-0609

LOVELAND OFFICE  
 1635 Foxtrail Drive, Suite 204  
 Loveland, Colorado 80538  
 Phone 970-776-4331

DRAFTED BY:	LMO	CHECKED BY:	JRS	SHEET NO:
DATE DRAFTED:	9/25/15	DATE SURVEYED:	9/24/15	1
REVISED:	2/1/16	FILE NAME:	13-94	1 OF 2

# T4N, R63W



## NEAREST CULTURAL ITEMS:

BUILDING: 5280'+  
 BUILDING UNIT: 5280'+  
 HIGH OCCUPANCY BUILDING UNIT: 5280'+  
 DESIGNATED OUTSIDE ACTIVITY AREA: 5280'+  
 PUBLIC ROAD: 5280'+  
 ABOVE GROUND UTILITY: ±2680' SW  
 RAILROAD: 5280'+  
 PROPERTY LINE: ±231' S

## NOTES:

- ▲ INDICATES FOUND SECTION CORNER
- INDICATES CALCULATED CORNER
- DRAWING LATITUDE AND LONGITUDE COORDINATES ARE NAD 83 (CORS 96)(EPOCH:2002)
- ELEVATION BASED ON NAVD88 (GEOID09)
- BASIS OF BEARING DERIVED FROM COLORADO COORDINATE SYSTEM 1983 NORTH ZONE UNLESS OTHERWISE NOTED.
- ALL MEASURED DISTANCES ARE GRID. COMBINED SCALE FACTOR: .99974499
- OPERATOR: ROB WILSON / PDOP = 2.0
- SEE ADDENDUM TO WELL LOCATION CERTIFICATE FOR EXISTING IMPROVEMENTS WITHIN 500' OF THE WELL PAD.
- WELL FOOTAGES ARE MEASURED AT RIGHT ANGLES TO THE SECTION LINES.
- THE BOTTOM OF HOLE BEARS S01°54'46"E, 9691' FROM THE ENTRY POINT.

## WELL PAD - STATE NORTH PLATTE T-36

LATHAM U41-1-12XRLNC  
 WELL LOCATION CERTIFICATE  
 231' FSL & 1105' FEL SESE (SURFACE)  
 SECTION 36, T5N, R63W, 6TH P.M.  
 531' FNL & 480' FEL (LOT 1) NENE (ENTRY POINT)  
 SECTION 1, T4N, R63W, 6TH P.M.  
 470' FSL & 470' FEL SESE (BOTTOM)  
 SECTION 12, T4N, R63W, 6TH P.M.  
 WELD COUNTY, COLORADO



410 17th Street, Suite 1400  
 Denver, Colorado 80202



## CONSULTING, LLC

SHERIDAN OFFICE  
 1095 Saberton Avenue  
 Sheridan, Wyoming 82801  
 Phone 307-674-0609

LOVELAND OFFICE  
 1635 Foxtrail Drive, Suite 204  
 Loveland, Colorado 80538  
 Phone 970-776-4331

DRAFTED BY:	LMO	CHECKED BY:	JRS	SHEET NO:
DATE DRAFTED:	9/25/15	DATE SURVEYED:	9/24/15	2
REVISED:	2/1/16	FILE NAME:	13-94	2 OF 2