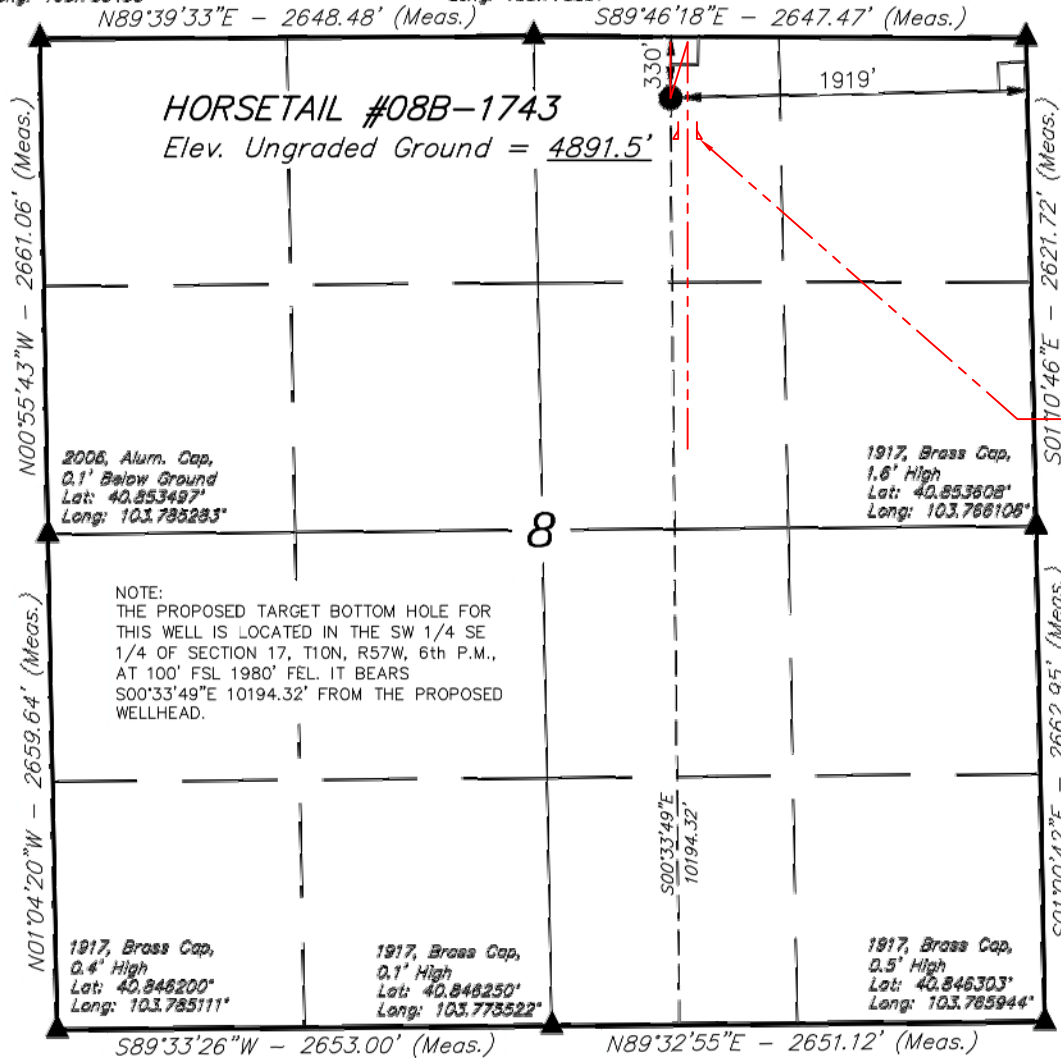


T10N, R57W, 6th P.M.

2006, Alum. Cap,
0.9' Below Ground
Lat: 40.880797°
Long: 103.785433°

2006, Alum. Cap,
0.8' Below Ground
Lat: 40.880836°
Long: 103.775961°

1917, Brass Cap,
1.2' High
Lat: 40.880800°
Long: 103.786292°



LEGEND:

- = 90° SYMBOL
- = PROPOSED WELLHEAD.
- ▲ = SECTION CORNERS LOCATED.
- = TARGET BOTTOM HOLE.

Target Bottom Hole

PDOP = 1.7

NAD 83 (SURFACE LOCATION)
LATITUDE = 40°51'35.72" (40.859922)
LONGITUDE = 103°48'23.84" (103.773208)
NAD 27 (SURFACE LOCATION)
LATITUDE = 40°51'35.77" (40.859938)
LONGITUDE = 103°48'21.74" (103.772708)

WHITING OIL & GAS CORP.

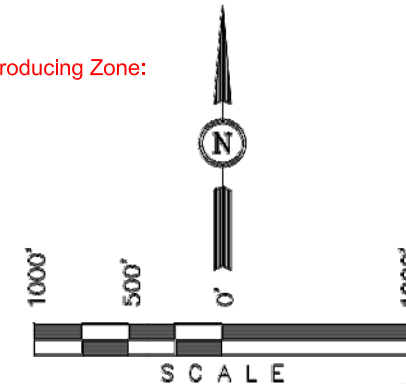
Well location, HORSETAIL #08B-1743 (SURFACE LOCATION), located as shown in the NW 1/4 NE 1/4 of Section 8, T10N, R57W, 6th P.M., Weld County, Colorado.

BASIS OF ELEVATION

SPOT ELEVATION LOCATED AT THE NORTHEAST CORNER OF SECTION 15, T9N, R58W, 6th P.M. TAKEN FROM THE GATEHOOK SPRING, QUADRANGLE, COLORADO, WELD COUNTY, 7.5 MINUTE QUAD (TOPOGRAPHIC MAP) PUBLISHED BY THE UNITED STATES DEPARTMENT OF THE INTERIOR, GEOLOGICAL SURVEY. SAID ELEVATION IS MARKED AS BEING 4879 FEET.

BASIS OF BEARINGS

BASIS OF BEARINGS IS A G.P.S. OBSERVATION.



CERTIFICATE

THIS IS TO CERTIFY THAT THE ABOVE PLAT WAS PREPARED FROM FIELD NOTES OF ACTUAL SURVEY MADE BY ME OR UNDER MY SUPERVISION AND THAT THE SAME ARE TRUE AND CORRECT TO THE BEST OF MY KNOWLEDGE AND BELIEF.

REGISTERED LAND SURVEYOR
REGISTRATION NO. 28285
STATE OF COLORADO
JANUARY 20-15

REV: 02-13-15 K.B.

UINTAH ENGINEERING & LAND SURVEYING
85 SOUTH 200 EAST - VERNAL, UTAH 84078
(435) 789-1017

SCALE 1" = 1000'	DATE SURVEYED: 12-09-14	DATE DRAWN: 12-31-14
PARTY DALLAS NIELSEN J.S. K.B.	REFERENCES G.L.O. PLAT	
WEATHER COLD	FILE WHITING OIL & GAS CORP.	

T10N, R57W, 6th P.M.

WHITING OIL & GAS CORP.

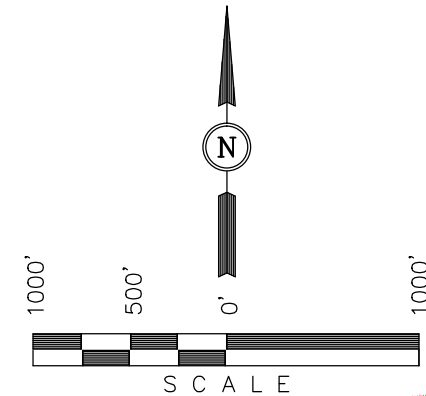
Well location, HORSETAIL #08B-1743 (TARGET BOTTOM HOLE), located as shown in the SW 1/4 SE 1/4 of Section 17, T10N, R57W, 6th P.M., Weld County, Colorado.

BASIS OF ELEVATION

SPOT ELEVATION LOCATED AT THE NORTHEAST CORNER OF SECTION 15, T9N, R58W, 6th P.M. TAKEN FROM THE GATEHOOK SPRING, QUADRANGLE, COLORADO, WELD COUNTY, 7.5 MINUTE QUAD (TOPOGRAPHIC MAP) PUBLISHED BY THE UNITED STATES DEPARTMENT OF THE INTERIOR, GEOLOGICAL SURVEY. SAID ELEVATION IS MARKED AS BEING 4679 FEET.

BASIS OF BEARINGS

BASIS OF BEARINGS IS A G.P.S. OBSERVATION.



CERTIFICATION

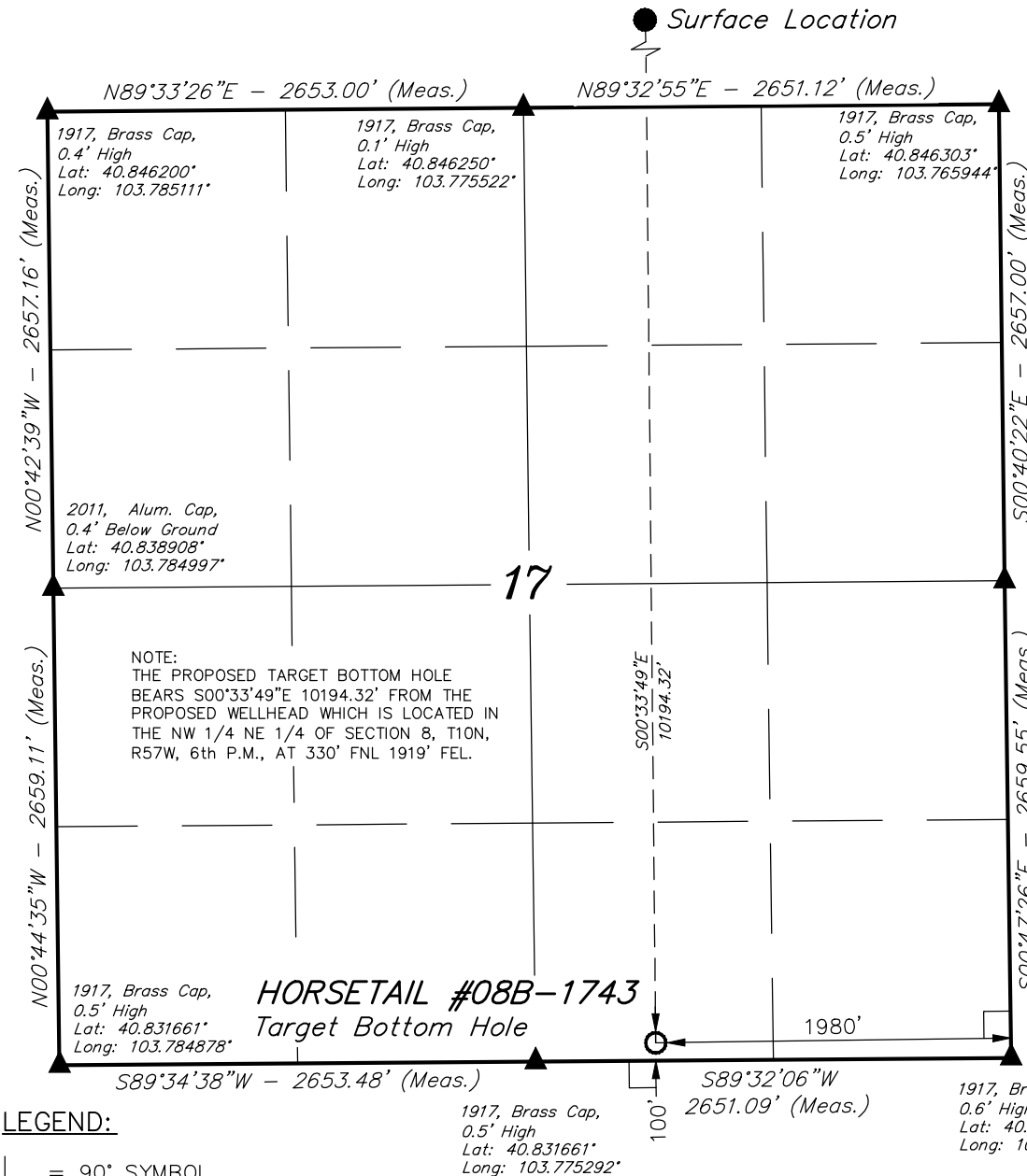
THIS IS TO CERTIFY THAT THE ABOVE PLAT WAS PREPARED FROM FIELD NOTES OF ACTUAL SURVEYS MADE BY ME OR UNDER MY SUPERVISION AND THAT THE SAME ARE TRUE AND CORRECT TO THE BEST OF MY KNOWLEDGE AND BELIEF.

REGISTERED LAND SURVEYOR
REGISTRATION NO. 28285
STATE OF COLORADO 02-13-15

REV: 02-13-15 K.B.

UINTAH ENGINEERING & LAND SURVEYING
85 SOUTH 200 EAST - VERNAL, UTAH 84078
(435) 789-1017

SCALE 1" = 1000'	DATE SURVEYED: 12-09-14	DATE DRAWN: 12-31-14
PARTY DALLAS NIELSEN J.S. K.B.	REFERENCES G.L.O. PLAT	
WEATHER COLD	FILE WHITING OIL & GAS CORP.	



NAD 83 (TARGET BOTTOM HOLE)	
LATITUDE	= 40°49'55.02" (40.831950)
LONGITUDE	= 103°46'22.34" (103.772872)
NAD 27 (TARGET BOTTOM HOLE)	
LATITUDE	= 40°49'55.07" (40.831964)
LONGITUDE	= 103°46'20.54" (103.772372)