

T10N, R57W, 6th. P.M.

1917, Brass Cap,  
1.2' High  
Lat: 40.860800°  
Long: 103.766292°

WHITING OIL & GAS CORP.

Well location, HORSETAIL #08B-1711 (SURFACE LOCATION), located as shown in the NW 1/4 NE 1/4 of Section 8, T10N, R57W, 6th. P.M., Weld County, Colorado.

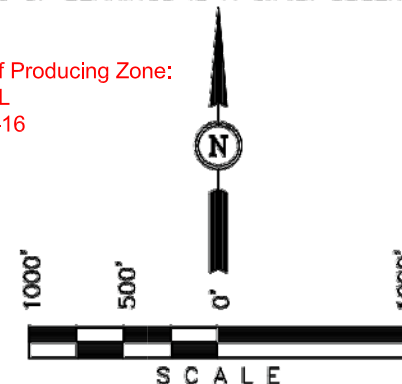
### BASIS OF ELEVATION

SPOT ELEVATION LOCATED AT THE NORTHEAST CORNER OF SECTION 15, T9N, R58W, 6th P.M. TAKEN FROM THE GATEHOOK SPRING, QUADRANGLE, COLORADO, WELD COUNTY, 7.5 MINUTE QUAD (TOPOGRAPHIC MAP) PUBLISHED BY THE UNITED STATES DEPARTMENT OF THE INTERIOR, GEOLOGICAL SURVEY. SAID ELEVATION IS MARKED AS BEING 4679 FEET.

### BASIS OF BEARINGS

BASIS OF BEARINGS IS A G.P.S. OBSERVATION.

Approximate Top of Producing Zone:  
551' FNL, 1663' FEL  
Hand Drawn 04-12-16



### CERTIFICATE

THIS IS TO CERTIFY THAT THE ABOVE PLAT WAS PREPARED FROM FIELD NOTES OF ACTUAL SURVEYS MADE BY ME OR UNDER MY SUPERVISION AND THAT THE SAME ARE TRUE AND CORRECT TO THE BEST OF MY KNOWLEDGE AND BELIEF.

REGISTERED LAND SURVEYOR  
REGISTRATION NO. 28285  
STATE OF COLORADO  
JANUARY 20-13

UINTAH ENGINEERING & LAND SURVEYING  
85 SOUTH 200 EAST - VERNAL, UTAH 84078  
(435) 789-1017

### LEGEND:

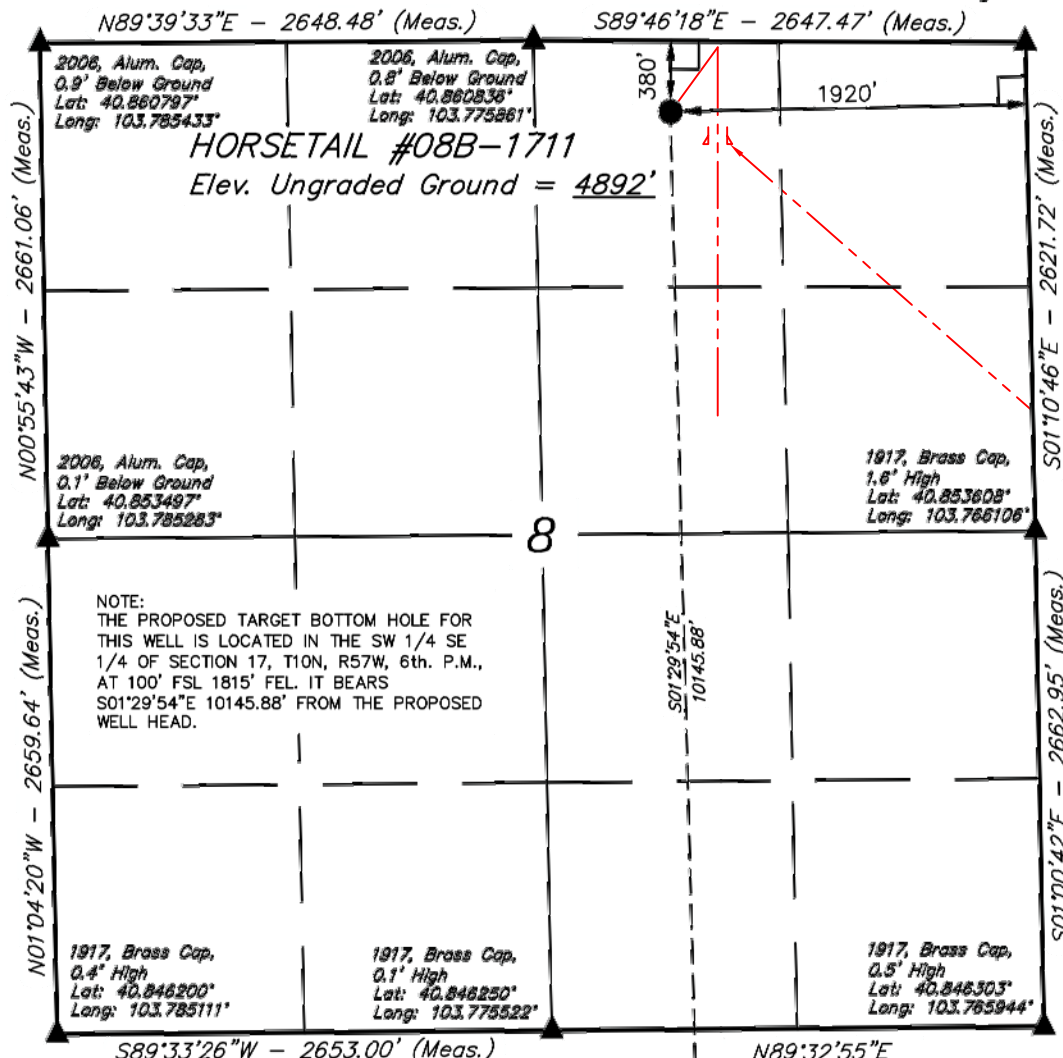
- └─ = 90° SYMBOL
- = PROPOSED WELL HEAD.
- ▲ = SECTION CORNERS LOCATED.

Target Bottom Hole

PDOP = 1.4

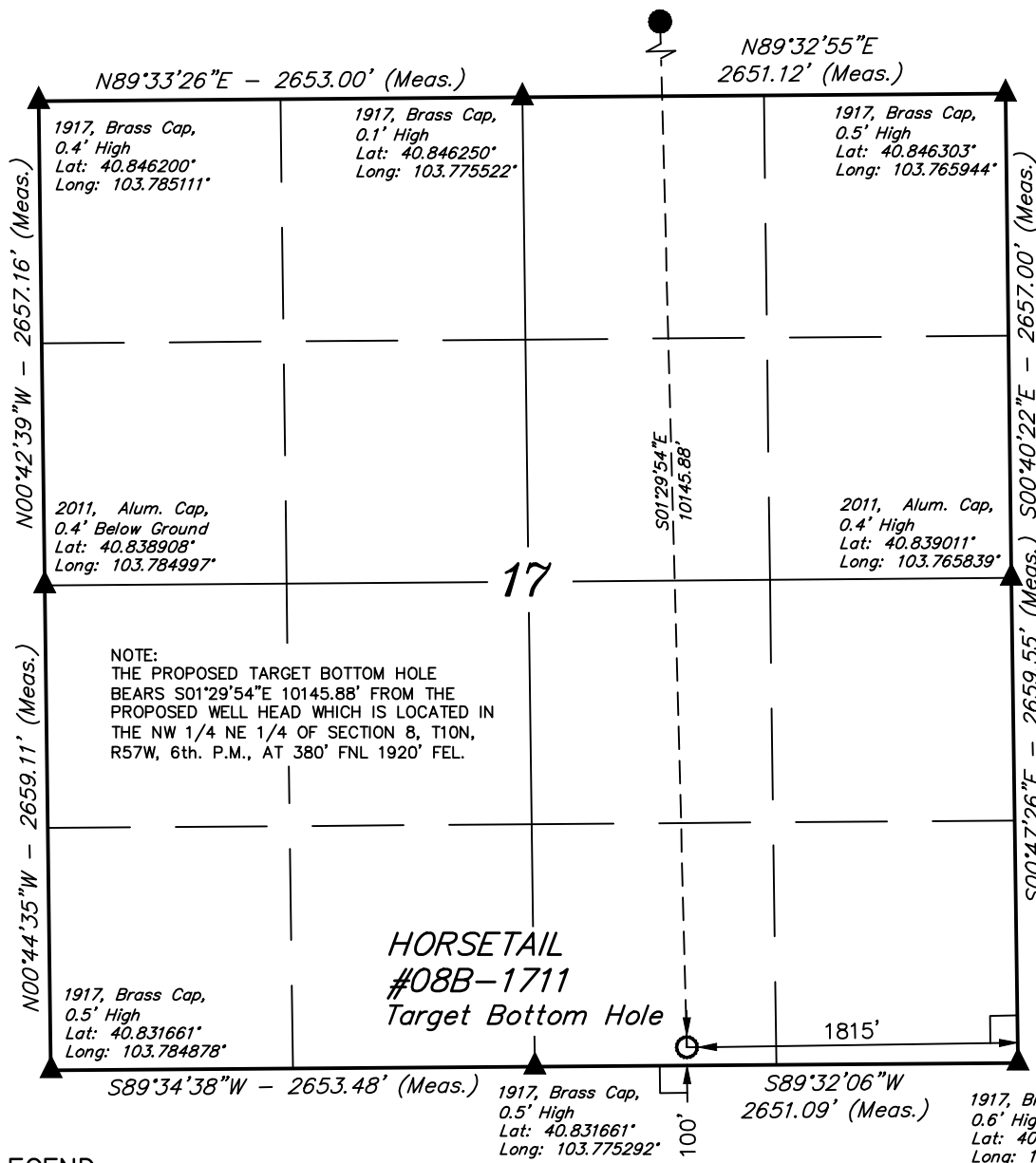
NAD 83 (SURFACE LOCATION)
LATITUDE = 40°51'35.22" (40.859783)
LONGITUDE = 103°46'23.84" (103.773208)
NAD 27 (SURFACE LOCATION)
LATITUDE = 40°51'35.28" (40.859800)
LONGITUDE = 103°46'21.74" (103.772708)

SCALE 1" = 1000'	DATE SURVEYED: 11-22-13	DATE DRAWN: 12-13-13
PARTY DALLAS NIELSEN G.W. H.K.W.	REFERENCES G.L.O. PLAT	
WEATHER COLD	FILE	WHITING OIL & GAS CORP.



T10N, R57W, 6th. P.M.

Surface Location



NOTE:  
THE PROPOSED TARGET BOTTOM HOLE  
BEARS S01°29'54"E 10145.88' FROM THE  
PROPOSED WELL HEAD WHICH IS LOCATED IN  
THE NW 1/4 NE 1/4 OF SECTION 8, T10N,  
R57W, 6th. P.M., AT 380' FNL 1920' FEL.

HORSETAIL  
#08B-1711  
Target Bottom Hole

# LEGEND:

- └─┘ = 90° SYMBOL
- = PROPOSED WELL HEAD.
- ▲ = SECTION CORNERS LOCATED.

<b>NAD 83 (TARGET BOTTOM HOLE)</b>	
LATITUDE = 40°49'55.03" (40.831953)	
LONGITUDE = 103°46'20.20" (103.772278)	
<b>NAD 27 (TARGET BOTTOM HOLE)</b>	
LATITUDE = 40°49'55.08" (40.831967)	
LONGITUDE = 103°46'18.39" (103.771775)	

## WHITING OIL & GAS CORP.

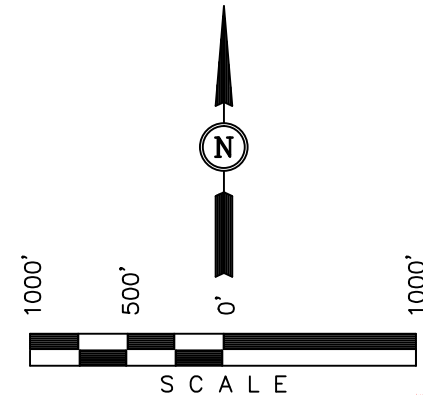
Well location, HORSETAIL #08B-1711 (TARGET BOTTOM HOLE), located as shown in the SW 1/4 SE 1/4 of Section 17, T10N, R57W, 6th. P.M., Weld County, Colorado.

## BASIS OF ELEVATION

SPOT ELEVATION LOCATED AT THE NORTHEAST CORNER OF SECTION 15, T9N, R58W, 6th P.M. TAKEN FROM THE GATEHOOK SPRING, QUADRANGLE, COLORADO, WELD COUNTY, 7.5 MINUTE QUAD (TOPOGRAPHIC MAP) PUBLISHED BY THE UNITED STATES DEPARTMENT OF THE INTERIOR, GEOLOGICAL SURVEY. SAID ELEVATION IS MARKED AS BEING 4679 FEET.

## BASIS OF BEARINGS

BASIS OF BEARINGS IS A G.P.S. OBSERVATION.



## CERTIFICATION

THIS IS TO CERTIFY THAT THE ABOVE PLAT WAS PREPARED FROM FIELD NOTES OF ACTUAL SURVEYS MADE BY ME OR UNDER MY SUPERVISION AND THAT THE SAME ARE TRUE AND CORRECT TO THE BEST OF MY KNOWLEDGE AND BELIEF.

REGISTERED LAND SURVEYOR  
REGISTRATION NO. 28285  
STATE OF COLORADO  
2-20-13

UINTAH ENGINEERING & LAND SURVEYING  
85 SOUTH 200 EAST - VERNAL, UTAH 84078  
(435) 789-1017

SCALE 1" = 1000'	DATE SURVEYED: 11-22-13	DATE DRAWN: 12-13-13
PARTY DALLAS NIELSEN G.W. H.K.W.	REFERENCES G.L.O. PLAT	
WEATHER COLD	FILE WHITING OIL & GAS CORP.	