

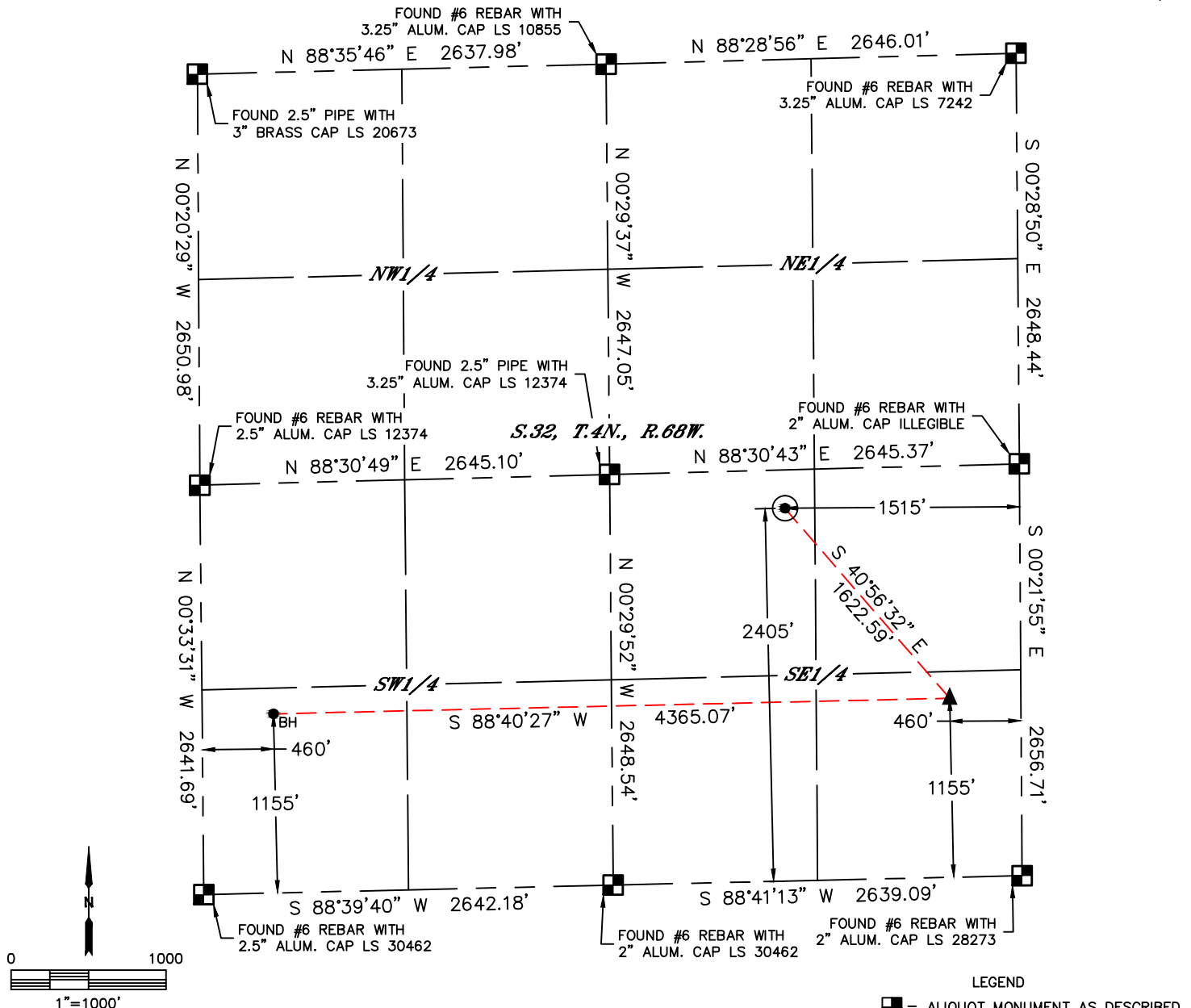


Lat40°, Inc. 6250 W. 10th Street, Unit 2, Greeley, CO 970-515-5294

# WELL LOCATION CERTIFICATE

MARKHAM 6

SECTION: 32  
TOWNSHIP: 4N  
RANGE: 68W  
6TH. P.M.  
WELD COUNTY, CO



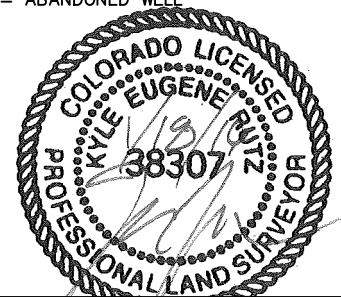
CLIENT: CUB CREEK ENERGY, LLC					LANDMAN: SCOTT BAILY			
INSTRUMENT OPERATOR: BRIAN ROTTINGHAUS					SURVEY DATE: 12/30/2015		SURFACE USE: RANGELAND	
SHL FOOTAGE		SHL LAT °	SHL LONG °	SHL PDOP	SHL ELEV (FT.)	SHL 1/4/1/4	SHL S-T-R	
2405	FSL	1515	FEL	40.26884	-105.02313	1.6	5041	NWSE 32-4-68

BHL FOOTAGE		BHL LAT °	BHL LONG °	BHL S-T-R	EP LAT °	EP LONG °	EP S-T-R
1155	FSL	460	FWL	40.26525	-105.03498	32-4-68	40.26546 -105.01934 32-4-68

NEAREST CULTURAL ITEMS	
BUILDING	±633' S
BUILDING UNIT	±747' SW
HIGH OCCUPANCY BUILDING UNIT	5280'+
DESIGNATED OUTSIDE ACTIVITY AREA	5280'+
PUBLIC ROAD (COUNTY ROAD 5)	±1506' E
ABOVE GROUND UTILITY	±2809' SE
RAILROAD	5280'+
PROPERTY LINE	±247' N

NOTE:  
1) Bearings shown are Grid Bearings of the Colorado State Plane Coordinate System, North Zone, North American Datum 1983. The lineal dimensions as contained herein are based upon the "U.S. Survey Foot."  
2) Distances to section lines measured at 90 degrees from said section lines.  
3) Ground elevations are based on an observed GPS elevation (NAVD 1988 DATUM).  
4) Latitude and Longitude shown are (NAD 83 DATUM).  
5) IMPROVEMENTS: See LOCATION DRAWING for all visible improvements within 500' of oil and gas location.  
6) This map does not represent a boundary survey.

- LEGEND
- = ALIQUOT MONUMENT AS DESCRIBED
  - = CALCULATED POSITION
  - = SURFACE HOLE LOCATION (SHL)
  - ▲ = ENTRY POINT LOCATION (EP)
  - BH = BOTTOM HOLE LOCATION (BHL)
  - ⊙ = EXISTING WELL
  - ⊙ = ABANDONED WELL



Kyle E. Rutz—On behalf of Lat40°, Inc.  
Colorado Licensed Professional Land Surveyor No. 38307  
DATE: 1/18/2016  
PROJECT#: 2015177