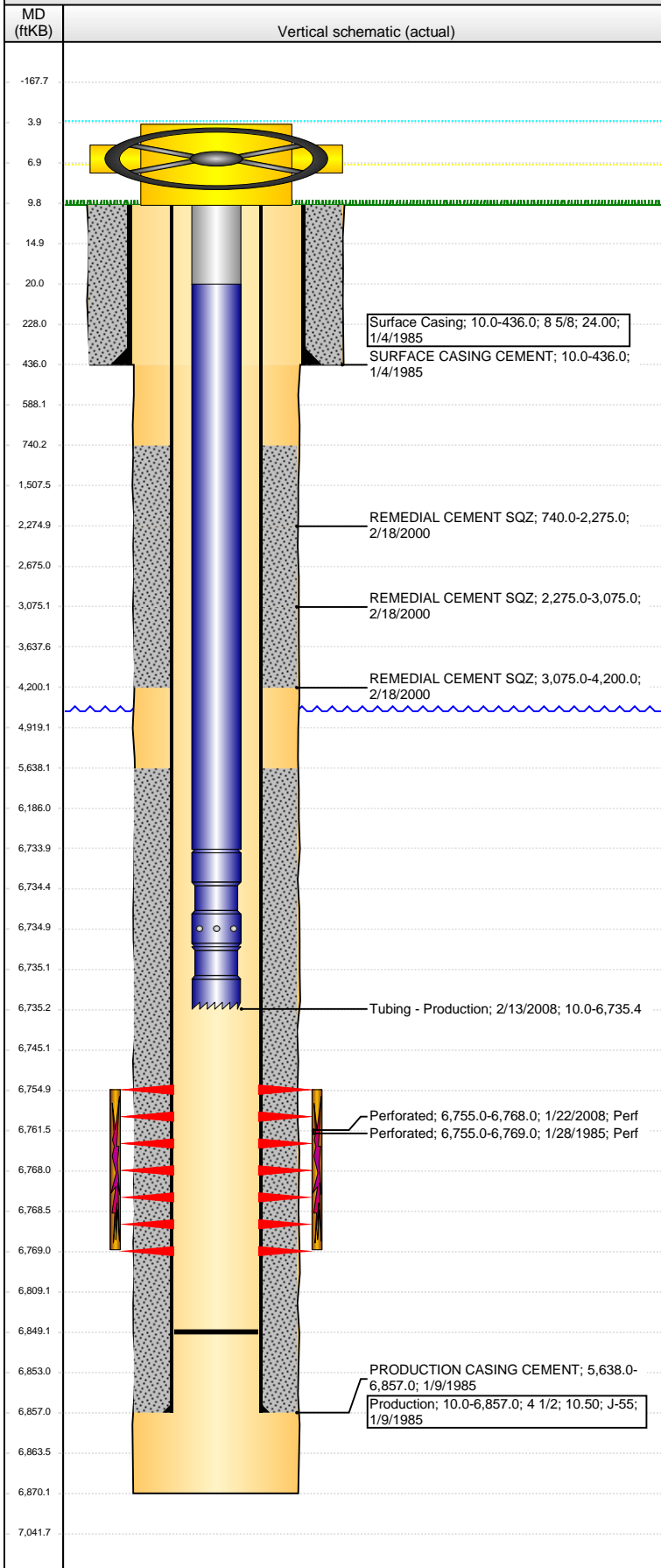


# Wellbore Schematic Input Report

Well Name: **SHAKLEE 01**

VERTICAL - ORIGINAL HOLE, 4/27/2016 9:19:28 AM



## Well Header

API 05-123-12101	Business Unit DJ BASIN	District 15	Well Config VERTICAL
Original KB Elevation (ft) 4,630	KB - GL / MSL (ftKB) 10.00	Spud Date 1/4/1985	P & A Date

## Comment

WELL DATA FILE SKETCHY  
TD DISCREPANCY: STATE SAYS 6870, WELLFILE SAYS 6879  
CSG SET DEPTH DISCREPANCY: DRILL RPT SAYS 6857 KB, ORIGINAL COMPLETIONS RPT SAYS 6823 KB  
2/17/2000 REPAIRED HIC @2675 W/ BACKSIDE SQUEEZE

## Directions To Well

WCR 48 & 57, EAST 1/10, NORTH INTO

## Congressional Location

Quarter 1	Quarter 2	Quarter 3	Quarter 4	Section	Township	Twship N...	Range	Rng E/W Dir
		SW	SW	2	4	N	64	W

## Bottom Hole Location

North-South Distance (ft)	From N or S Line	East-West Distance (ft)	From E or W Line
---------------------------	------------------	-------------------------	------------------

## Plug Back Total Depths

Date	Depth (ftKB)	Method	Com
1/9/1985	6,857.0	CASING TALLY	TOP OF FC
2/13/2008	6,849.0	TAG	LAST TAG C/O

## Wellbore Sections

Section Des	Size (in)	Act Top, MD (ftKB)	Act Btm, MD (ftKB)
Surface	12 1/4	10.0	436.0
Production	7 7/8	436.0	6,870.0

## Zone Statuses

Zone Name	Status Date	Status	Fluid Type	Job	Prod Method
CODELL	2/13/1985	PR	Gas	DRILLING/CO...	
CODELL	2/15/2000	SI	Gas	CASING REPA...	
CODELL	2/24/2000	PR	Gas	CASING REPA...	
CODELL	1/19/2006	SI	Gas	CASING REPA...	
CODELL	3/7/2006	PR	Gas	CASING REPA...	
CODELL	1/18/2008	SI	Gas	RE-FRAC, 1/18...	
CODELL	3/7/2008	PR	Gas	RE-FRAC, 1/18...	

## Casing Strings

### Surface Casing, 436.0ftKB

Casing Description	Run Date	OD (in)	Wt/Len (l...	Grade	Top, MD (ft...	MD (ftKB)
Surface Casing	1/4/1985	8 5/8	24.00		10.0	436.0

### Production, 6,857.0ftKB

Casing Description	Run Date	OD (in)	Wt/Len (l...	Grade	Top, MD (ft...	MD (ftKB)
Production	1/9/1985	4 1/2	10.50	J-55	10.0	6,857.0

## Cement

Description	Top Depth (ftKB)	Bottom Depth (ftKB)
SURFACE CASING CEMENT	10.0	436.0
Description	Top Depth (ftKB)	Bottom Depth (ftKB)
PRODUCTION CASING CEMENT	5,638.0	6,857.0
Description	Top Depth (ftKB)	Bottom Depth (ftKB)
REMEDIAL CEMENT SQZ	740.0	2,275.0
Description	Top Depth (ftKB)	Bottom Depth (ftKB)
REMEDIAL CEMENT SQZ	2,275.0	3,075.0
Description	Top Depth (ftKB)	Bottom Depth (ftKB)
REMEDIAL CEMENT SQZ	3,075.0	4,200.0

## Tubing Strings

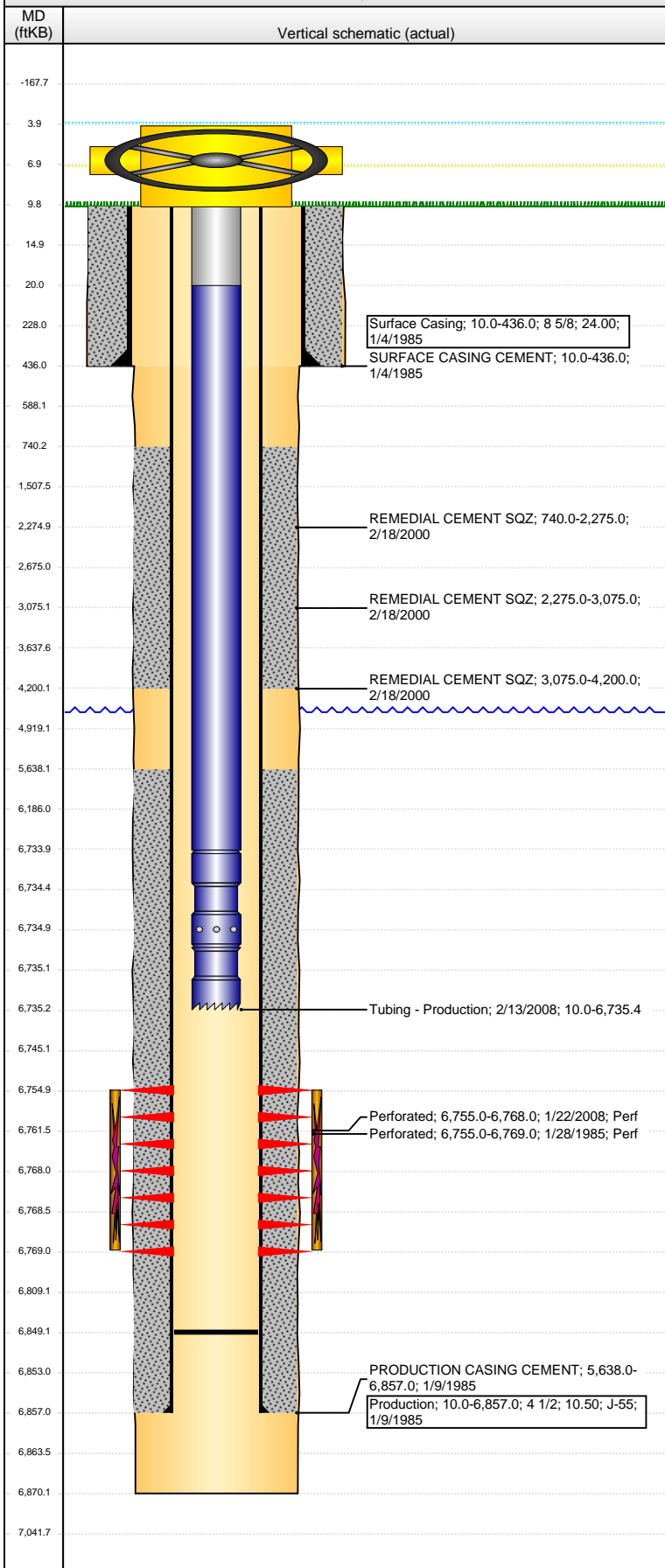
Tubing Description	Run Date	String...	ID (in)	Wt (lb/ft)	Grade	Len (ft)	Set De...
Tubing	1/24/2006	2 3/8		4.70	J-55	6,721.00	
Tubing Description	Run Date	String...	ID (in)	Wt (lb/ft)	Grade	Len (ft)	Set De...
Tubing - Frac string	1/23/2008	2 7/8	2.441	6.50	N-80	6,349.26	
Tubing Description	Run Date	String...	ID (in)	Wt (lb/ft)	Grade	Len (ft)	Set De...
Tubing - Production	2/13/2008	2 3/8	1.995	4.70	J-55	6,725.38	

## Tubing Components

Item Des	OD (in)	Wt (lb/ft)	Grade	Jts	Len (ft)	Btm (ftKB)	Btm (TVD) (ftKB)
Tubing Pup Joint	2 3/8	4.70	J-55	1	10.00	20.0	
Tubing	2 3/8	4.70	J-55	216	6,713.78	6,733.8	
Landing Collar	2 3/8				1.20	6,735.0	

**Well Name: SHAKLEE 01**

VERTICAL - ORIGINAL HOLE, 4/27/2016 9:19:30 AM



Tubing Components							
Item Des	OD (in)	Wt (lb/ft)	Grade	Jts	Len (ft)	Btm (ftKB)	Btm (TVD) (ftKB)
Notched collar	2 3/8				0.40	6,735.4	
Perforation Data							
Zone	Bnch/St g	Entered Shot Total	Top (ftKB)		Btm (ftKB)		Date
CODELL, ORIGINAL HOLE		15	6,755.00		6,769.00		1/28/1985
CODELL, ORIGINAL HOLE		52	6,755.00		6,768.00		1/22/2008
Stimulations & Treatments							
Date	Zone			Primary Job Type			
1/28/1985	CODELL, ORIGINAL HOLE			DRILLING/COMPLETION - ORIGINAL			
Technical Result		Tech Result Details			Tech Result Note		
Comment							
Date	Zone			Primary Job Type			
2/7/2008	CODELL, ORIGINAL HOLE			RE-FRAC			
Technical Result		Tech Result Details			Tech Result Note		
Success		According to Plan					
Comment							
(CODELL REFRAC) TREATMENT WENT WELL NO ISSUES TO REPORT RAN 3 PSA STAGE AS A 2-4 PSA RAMP							
Other In Hole							
Run Date	Des				OD (in)	Top (ftKB)	Btm (ftKB)
Logs							
Date	Type				Top, MD (ftKB)		Btm, MD (ftKB)
1/9/1985	Compensated Density				6,394.0		6,876.0
1/9/1985	Induction				437.0		6,874.0
1/15/1985	Cement Bond				5,555.0		6,885.0
1/20/2006	Cement Bond				200.0		6,500.0