

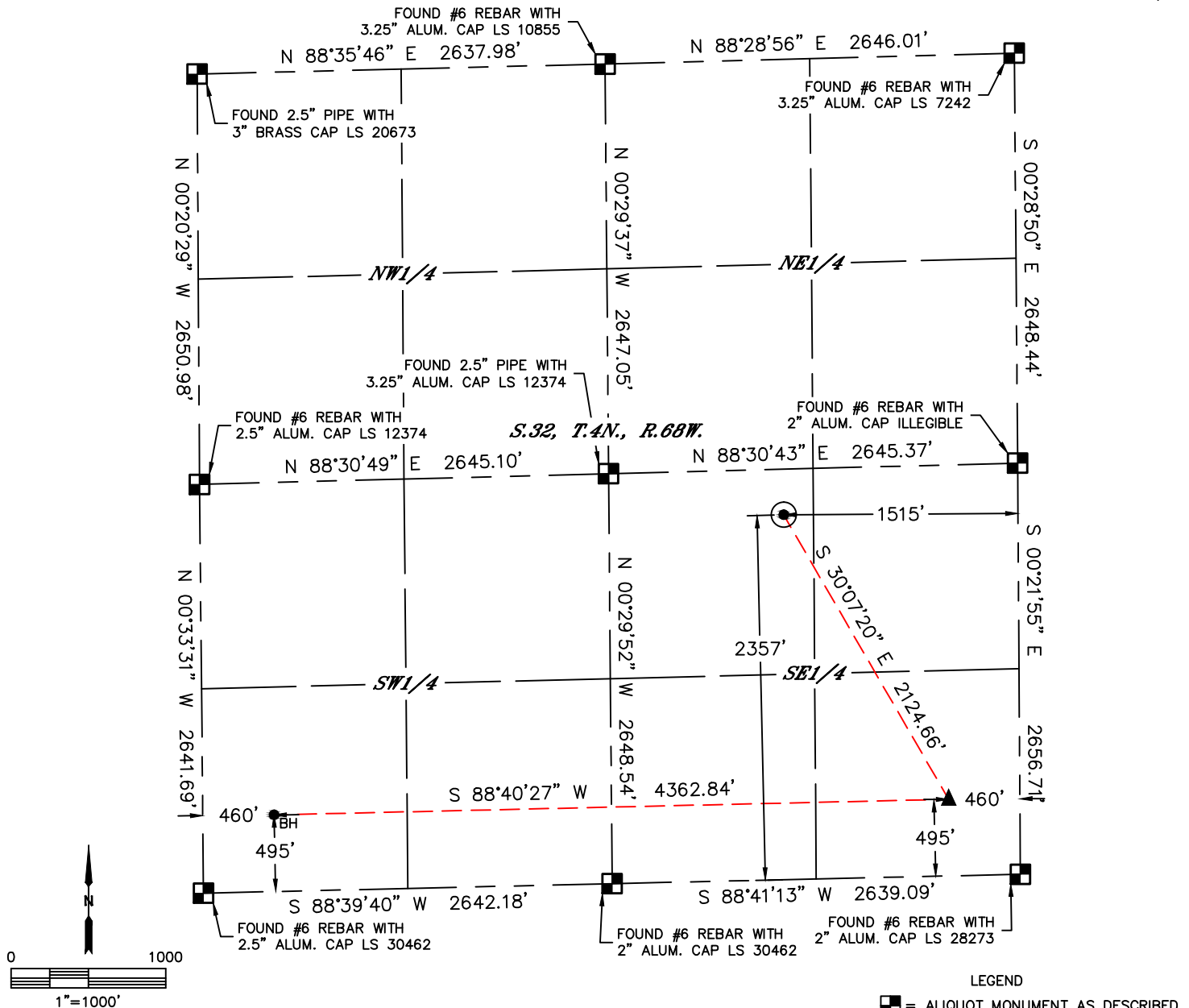


Lat40°, Inc. 6250 W. 10th Street, Unit 2, Greeley, CO 970-515-5294

WELL LOCATION CERTIFICATE

MARKHAM 3

SECTION: 32
TOWNSHIP: 4N
RANGE: 68W
6TH. P.M.
WELD COUNTY, CO



CLIENT: CUB CREEK ENERGY, LLC				LANDMAN: SCOTT BAILY			
INSTRUMENT OPERATOR: BRIAN ROTTINGHAUS				SURVEY DATE: 12/30/2015		SURFACE USE: RANGELAND	
SHL FOOTAGE	SHL LAT °	SHL LONG °	SHL PDOP	SHL ELEV (FT.)	SHL 1/4/1/4	SHL S-T-R	
2357	FSL	1515	FEL	40.26871	-105.02313	1.6	5042

BHL FOOTAGE	BHL LAT °	BHL LONG °	BHL S-T-R	EP LAT °	EP LONG °	EP S-T-R
495	FSL	460	FWL	40.26344	-105.03497	32-4-68

NEAREST CULTURAL ITEMS	
BUILDING	±585'S
BUILDING UNIT	±699'SW
HIGH OCCUPANCY BUILDING UNIT	5280'+
DESIGNATED OUTSIDE ACTIVITY AREA	5280'+
PUBLIC ROAD (COUNTY ROAD 5)	±1505'E
ABOVE GROUND UTILITY	±2768'SE
RAILROAD	5280'+
PROPERTY LINE	±295'N

NOTE:

- 1) Bearings shown are Grid Bearings of the Colorado State Plane Coordinate System, North Zone, North American Datum 1983. The lineal dimensions as contained herein are based upon the "U.S. Survey Foot."
- 2) Distances to section lines measured at 90 degrees from said section lines.
- 3) Ground elevations are based on an observed GPS elevation (NAVD 1988 DATUM).
- 4) Latitude and Longitude shown are (NAD 83 DATUM).
- 5) IMPROVEMENTS: See LOCATION DRAWING for all visible improvements within 500' of oil and gas location.
- 6) This map does not represent a boundary survey.

- LEGEND
- = ALIQUOT MONUMENT AS DESCRIBED
 - = CALCULATED POSITION
 - = SURFACE HOLE LOCATION (SHL)
 - ▲ = ENTRY POINT LOCATION (EP)
 - BH = BOTTOM HOLE LOCATION (BHL)
 - ⊙ = EXISTING WELL
 - ⊗ = ABANDONED WELL



Kyle E. Rutz—On behalf of Lat40°, Inc.
Colorado Licensed Professional Land Surveyor No. 38307
DATE: 1/18/2016
PROJECT#: 2015177