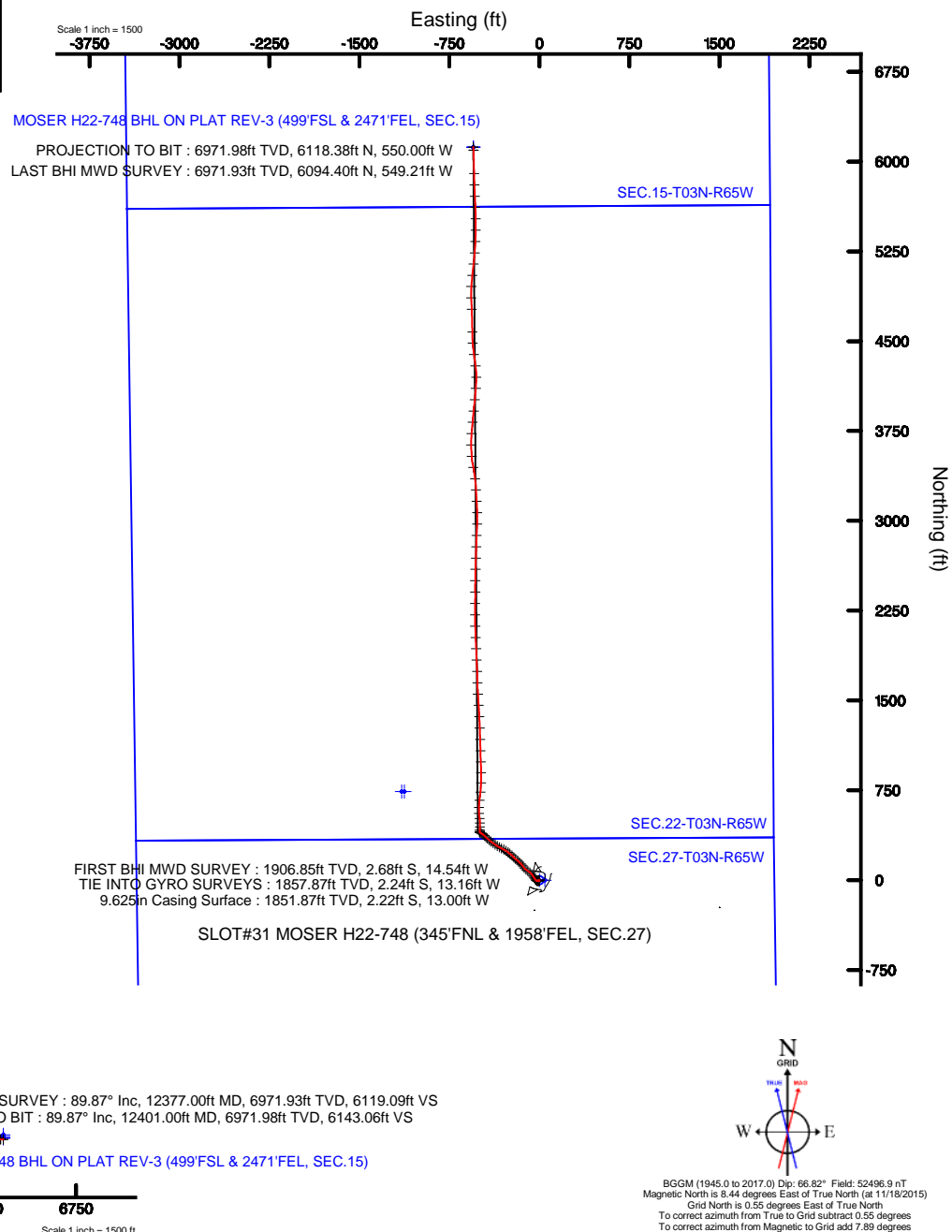
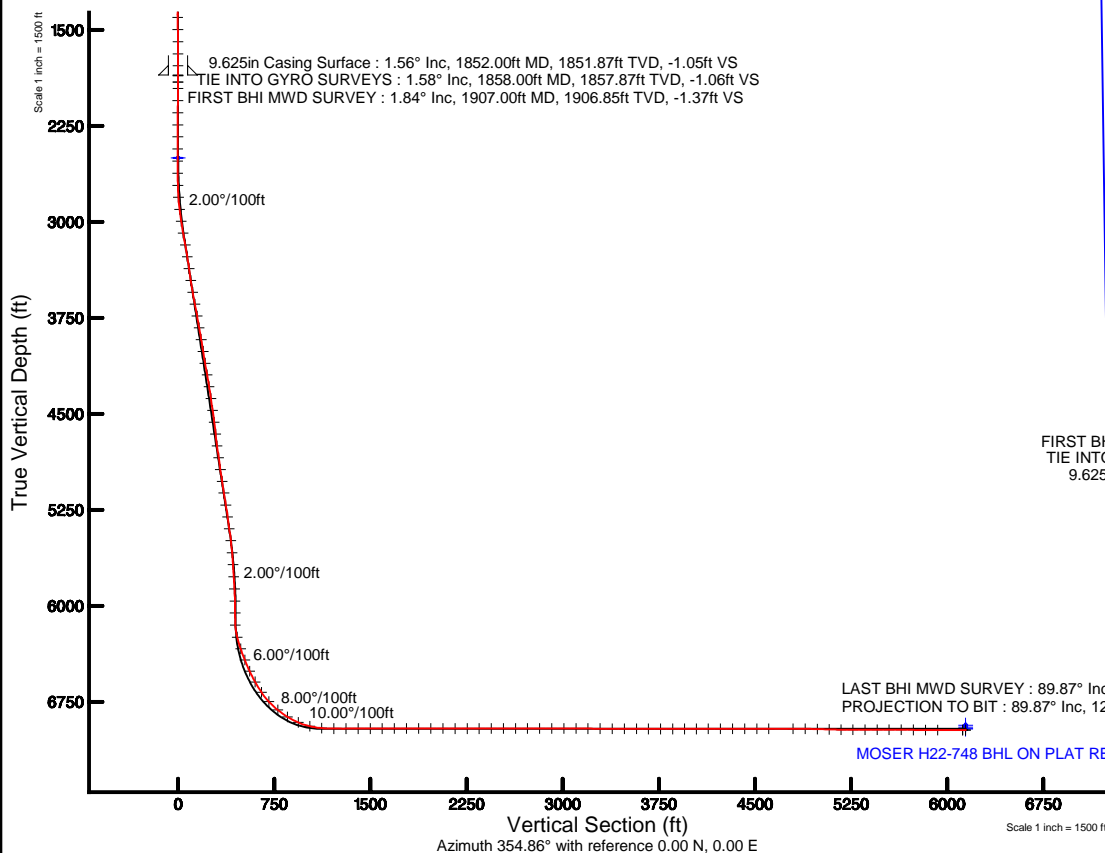


NOBLE ENERGY, INC

Location: COLORADO Slot: SLOT#31 MOSER H22-748 (345°FNL & 1958°FEL, SEC.27)
Field: WELD COUNTY (NOBLE NAD 83 GRID) Well: MOSER H22-748
Facility: SEC.27-T03N-R65W Wellbore: MOSER H22-748 PWB

Plot reference wellpath is MOSER H22-748 (REV-C.0) PWP	
True vertical depths are referenced to H&P 321 (RKB)	Grid System: NAD83 / Lambert Colorado SP, Northern Zone (501), US feet
Measured depths are referenced to H&P 321 (RKB)	North Reference: Grid north
H&P 321 (RKB) to Mean Sea Level: 4841 feet	Scale: True distance
Mean Sea Level to Mud line (At Slot: SLOT#31 MOSER H22-748 (345°FNL & 1958°FEL, SEC.27)): 0 feet	Depths are in feet
Coordinates are in feet referenced to Slot	Created by: adamkat on 1/5/2016



REFERENCE WELLPATH IDENTIFICATION

Operator	NOBLE ENERGY, INC	Slot	SLOT#31 MOSER H22-748 (345'FNL & 1958'FEL, SEC.27)
Area	COLORADO	Well	MOSER H22-748
Field	WELD COUNTY (NOBLE NAD 83 GRID)	Wellbore	MOSER H22-748 AWB
Facility	SEC.27-T03N-R65W		

REPORT SETUP INFORMATION

Projection System	NAD83 / Lambert Colorado SP, Northern Zone (501), US feet	Software System	WellArchitect® 4.1.1
North Reference	Grid	User	Adamkat
Scale	0.999957	Report Generated	1/26/2016 at 9:02:19 AM
Convergence at slot	0.55° East	Database/Source file	WA_DEN_Denver_Defn/MOSER_H22-748_AWB.xml

WELLPATH LOCATION

	Local coordinates		Grid coordinates		Geographic coordinates	
	North[ft]	East[ft]	Easting[US ft]	Northing[US ft]	Latitude	Longitude
Slot Location	228.49	-1501.45	3238187.22	1317831.31	40°12'09.720"N	104°38'50.100"W
Facility Reference Pt			3239688.60	1317602.82	40°12'07.319"N	104°38'30.779"W
Field Reference Pt			3000000.00	4454105.15	48°46'34.315"N	105°30'00.000"W

WELLPATH DATUM

Calculation method	Minimum curvature	H&P 321 (RKB) to Facility Vertical Datum	4841.00ft
Horizontal Reference Pt	Slot	H&P 321 (RKB) to Mean Sea Level	4841.00ft
Vertical Reference Pt	H&P 321 (RKB)	H&P 321 (RKB) to Mud Line at Slot (SLOT#31 MOSER H22-748 (345'FNL & 1958'FEL, SEC.27))	4841.00ft
MD Reference Pt	H&P 321 (RKB)	Section Origin	N 0.00, E 0.00 ft
Field Vertical Reference	Mean Sea Level	Section Azimuth	354.86°

REFERENCE WELLPATH IDENTIFICATION

Operator	NOBLE ENERGY, INC	Slot	SLOT#31 MOSER H22-748 (345°FNL & 1958°FEL, SEC.27)
Area	COLORADO	Well	MOSER H22-748
Field	WELD COUNTY (NOBLE NAD 83 GRID)	Wellbore	MOSER H22-748 AWP
Facility	SEC.27-T03N-R65W		

WELLPATH DATA (132 stations)

MD [ft]	Inclination [°]	Azimuth [°]	TVD [ft]	Vert Sect [ft]	North [ft]	East [ft]	Latitude	Longitude	DLS [°/100ft]	Comments
0.00	0.000	170.600	0.00	0.00	0.00	0.00	40°12'09.720"N	104°38'50.100"W	0.00	
83.00	0.290	170.600	83.00	-0.21	-0.21	0.03	40°12'09.718"N	104°38'50.100"W	0.35	
176.00	0.330	176.550	176.00	-0.71	-0.71	0.09	40°12'09.713"N	104°38'50.099"W	0.06	
268.00	0.290	308.710	268.00	-0.82	-0.83	-0.08	40°12'09.712"N	104°38'50.101"W	0.62	
360.00	0.900	225.320	359.99	-1.11	-1.19	-0.77	40°12'09.708"N	104°38'50.110"W	0.99	
455.00	0.720	220.820	454.98	-2.00	-2.16	-1.69	40°12'09.699"N	104°38'50.122"W	0.20	
550.00	0.670	213.920	549.98	-2.85	-3.08	-2.39	40°12'09.690"N	104°38'50.131"W	0.10	
645.00	0.690	219.220	644.97	-3.69	-3.98	-3.06	40°12'09.681"N	104°38'50.140"W	0.07	
739.00	0.570	216.420	738.96	-4.45	-4.80	-3.70	40°12'09.673"N	104°38'50.148"W	0.13	
834.00	0.620	242.320	833.96	-5.00	-5.41	-4.44	40°12'09.667"N	104°38'50.158"W	0.29	
929.00	0.230	46.580	928.96	-5.07	-5.52	-4.75	40°12'09.666"N	104°38'50.162"W	0.89	
1023.00	0.660	10.270	1022.96	-4.44	-4.86	-4.52	40°12'09.672"N	104°38'50.159"W	0.53	
1118.00	0.280	353.990	1117.95	-3.68	-4.09	-4.45	40°12'09.680"N	104°38'50.158"W	0.42	
1212.00	0.290	333.580	1211.95	-3.22	-3.65	-4.58	40°12'09.684"N	104°38'50.159"W	0.11	
1307.00	0.420	239.310	1306.95	-3.15	-3.61	-4.98	40°12'09.685"N	104°38'50.165"W	0.56	
1402.00	0.500	322.320	1401.95	-2.95	-3.46	-5.53	40°12'09.686"N	104°38'50.172"W	0.64	
1496.00	0.500	284.110	1495.94	-2.47	-3.04	-6.18	40°12'09.691"N	104°38'50.180"W	0.35	
1591.00	0.990	282.530	1590.94	-2.08	-2.76	-7.39	40°12'09.693"N	104°38'50.196"W	0.52	
1686.00	1.250	290.780	1685.92	-1.38	-2.21	-9.16	40°12'09.699"N	104°38'50.218"W	0.32	
1780.00	1.330	263.060	1779.89	-0.97	-1.98	-11.20	40°12'09.701"N	104°38'50.245"W	0.66	
1858.00	1.580	261.710	1857.87	-1.06	-2.24	-13.16	40°12'09.699"N	104°38'50.270"W	0.32	TIE INTO GYRO SURVEYS
1907.00	1.840	244.210	1906.85	-1.37	-2.68	-14.54	40°12'09.695"N	104°38'50.288"W	1.18	FIRST BHI MWD SURVEY
1957.00	0.570	215.190	1956.84	-1.84	-3.24	-15.40	40°12'09.689"N	104°38'50.299"W	2.74	
2051.00	0.170	173.610	2050.83	-2.34	-3.76	-15.66	40°12'09.684"N	104°38'50.302"W	0.49	
2146.00	0.150	174.350	2145.83	-2.60	-4.02	-15.63	40°12'09.682"N	104°38'50.302"W	0.02	
2241.00	0.070	115.760	2240.83	-2.76	-4.17	-15.57	40°12'09.680"N	104°38'50.301"W	0.14	
2335.00	0.070	352.780	2334.83	-2.73	-4.14	-15.52	40°12'09.681"N	104°38'50.301"W	0.13	
2430.00	0.370	141.770	2429.83	-2.93	-4.32	-15.34	40°12'09.679"N	104°38'50.298"W	0.45	
2524.00	0.450	240.020	2523.83	-3.34	-4.74	-15.47	40°12'09.675"N	104°38'50.300"W	0.66	
2619.00	2.210	268.620	2618.80	-3.38	-4.98	-17.62	40°12'09.673"N	104°38'50.328"W	1.92	
2714.00	3.810	285.680	2713.67	-2.13	-4.17	-22.49	40°12'09.681"N	104°38'50.390"W	1.91	
2808.00	5.590	312.970	2807.36	2.38	-0.20	-28.85	40°12'09.721"N	104°38'50.472"W	2.99	
2903.00	7.730	326.300	2901.72	11.44	8.27	-35.78	40°12'09.805"N	104°38'50.560"W	2.76	
2997.00	10.120	326.270	2994.58	24.25	20.40	-43.88	40°12'09.926"N	104°38'50.663"W	2.54	
3092.00	10.710	326.680	3088.01	39.36	34.72	-53.36	40°12'10.068"N	104°38'50.783"W	0.63	
3186.00	12.540	321.000	3180.08	55.53	49.95	-64.58	40°12'10.220"N	104°38'50.926"W	2.29	
3281.00	12.430	310.620	3272.85	71.42	64.62	-78.84	40°12'10.366"N	104°38'51.108"W	2.36	
3376.00	12.360	301.400	3365.64	84.80	76.58	-95.28	40°12'10.486"N	104°38'51.318"W	2.08	
3470.00	12.550	308.440	3457.43	97.83	88.17	-111.86	40°12'10.602"N	104°38'51.531"W	1.63	
3565.00	12.530	320.310	3550.18	113.44	102.52	-126.53	40°12'10.745"N	104°38'51.718"W	2.71	
3660.00	12.550	324.510	3642.92	130.83	118.85	-139.11	40°12'10.908"N	104°38'51.878"W	0.96	
3754.00	12.660	314.220	3734.67	147.47	134.35	-152.42	40°12'11.062"N	104°38'52.048"W	2.39	
3849.00	13.010	315.980	3827.29	163.69	149.30	-167.31	40°12'11.211"N	104°38'52.238"W	0.55	
3943.00	13.050	311.830	3918.87	179.68	163.99	-182.57	40°12'11.358"N	104°38'52.433"W	1.00	
4038.00	12.800	308.500	4011.47	194.79	177.69	-198.80	40°12'11.495"N	104°38'52.640"W	0.83	

REFERENCE WELLPATH IDENTIFICATION

Operator	NOBLE ENERGY, INC	Slot	SLOT#31 MOSER H22-748 (345°FNL & 1958°FEL, SEC.27)
Area	COLORADO	Well	MOSER H22-748
Field	WELD COUNTY (NOBLE NAD 83 GRID)	Wellbore	MOSER H22-748 AWP
Facility	SEC.27-T03N-R65W		

WELLPATH DATA (132 stations)

MD [ft]	Inclination [°]	Azimuth [°]	TVD [ft]	Vert Sect [ft]	North [ft]	East [ft]	Latitude	Longitude	DLS [°/100ft]	Comments
4133.00	12.960	312.440	4104.08	209.91	191.43	-214.90	40°12'11.632"N	104°38'52.846"W	0.94	
4227.00	12.950	317.230	4195.69	226.04	206.28	-229.83	40°12'11.780"N	104°38'53.036"W	1.14	
4322.00	12.770	308.880	4288.31	241.77	220.68	-245.23	40°12'11.924"N	104°38'53.233"W	1.96	
4417.00	12.590	303.830	4381.00	255.57	233.04	-262.01	40°12'12.048"N	104°38'53.448"W	1.18	
4512.00	12.820	306.060	4473.68	269.03	245.01	-279.13	40°12'12.168"N	104°38'53.667"W	0.57	
4606.00	12.970	297.070	4565.31	281.52	255.95	-296.95	40°12'12.277"N	104°38'53.895"W	2.14	
4701.00	12.810	294.140	4657.92	292.35	265.11	-316.06	40°12'12.370"N	104°38'54.140"W	0.71	
4796.00	12.760	300.890	4750.57	303.68	274.80	-334.67	40°12'12.467"N	104°38'54.379"W	1.57	
4890.00	12.750	303.730	4842.25	316.29	285.89	-352.21	40°12'12.578"N	104°38'54.604"W	0.67	
4985.00	12.750	303.640	4934.91	329.44	297.52	-369.65	40°12'12.695"N	104°38'54.827"W	0.02	
5080.00	12.740	306.000	5027.57	342.89	309.48	-386.86	40°12'12.815"N	104°38'55.047"W	0.55	
5174.00	12.670	308.210	5119.27	356.79	321.95	-403.34	40°12'12.940"N	104°38'55.258"W	0.52	
5269.00	12.730	312.470	5211.95	371.67	335.46	-419.25	40°12'13.075"N	104°38'55.461"W	0.99	
5364.00	10.620	311.330	5304.98	385.75	348.31	-433.54	40°12'13.203"N	104°38'55.644"W	2.23	
5459.00	10.820	314.290	5398.32	398.87	360.32	-446.50	40°12'13.323"N	104°38'55.810"W	0.62	
5553.00	9.350	312.090	5490.86	411.18	371.60	-458.48	40°12'13.436"N	104°38'55.963"W	1.62	
5648.00	7.520	307.030	5584.83	421.02	380.52	-469.17	40°12'13.525"N	104°38'56.099"W	2.08	
5743.00	6.030	299.630	5679.17	428.04	386.73	-478.48	40°12'13.587"N	104°38'56.218"W	1.81	
5837.00	5.540	305.510	5772.69	433.81	391.81	-486.46	40°12'13.638"N	104°38'56.321"W	0.82	
5932.00	4.210	309.850	5867.35	439.26	396.70	-492.87	40°12'13.687"N	104°38'56.403"W	1.45	
6027.00	2.240	307.580	5962.19	442.99	400.07	-497.02	40°12'13.720"N	104°38'56.456"W	2.08	
6122.00	0.140	138.720	6057.17	444.15	401.12	-498.41	40°12'13.731"N	104°38'56.474"W	2.50	
6216.00	3.050	6.760	6151.12	446.51	403.51	-498.04	40°12'13.755"N	104°38'56.469"W	3.35	
6311.00	13.920	3.910	6244.94	460.31	417.47	-496.96	40°12'13.892"N	104°38'56.453"W	11.45	
6406.00	19.490	1.350	6335.90	487.36	444.73	-495.81	40°12'14.162"N	104°38'56.435"W	5.91	
6500.00	21.430	359.960	6423.97	520.05	477.58	-495.45	40°12'14.486"N	104°38'56.426"W	2.13	
6595.00	24.730	352.160	6511.37	557.20	514.64	-498.18	40°12'14.853"N	104°38'56.456"W	4.73	
6689.00	29.650	355.110	6594.96	600.12	557.32	-502.84	40°12'15.275"N	104°38'56.511"W	5.43	
6784.00	33.910	2.340	6675.73	649.94	607.25	-503.77	40°12'15.768"N	104°38'56.517"W	6.01	
6879.00	43.310	5.980	6749.89	708.32	666.27	-499.28	40°12'16.351"N	104°38'56.452"W	10.18	
6974.00	51.640	6.410	6814.05	776.90	735.81	-491.71	40°12'17.038"N	104°38'56.346"W	8.77	
7068.00	58.320	1.830	6867.98	852.83	812.53	-486.31	40°12'17.795"N	104°38'56.267"W	8.15	
7163.00	66.600	358.960	6911.87	936.59	896.67	-485.81	40°12'18.627"N	104°38'56.250"W	9.12	
7258.00	76.830	357.820	6941.64	1026.50	986.72	-488.37	40°12'19.517"N	104°38'56.272"W	10.83	
7353.00	85.870	358.460	6955.91	1120.17	1080.49	-491.41	40°12'20.444"N	104°38'56.299"W	9.54	
7447.00	89.450	358.190	6959.75	1213.91	1174.36	-494.15	40°12'21.371"N	104°38'56.323"W	3.82	
7542.00	90.190	358.410	6960.05	1308.73	1269.32	-496.97	40°12'22.310"N	104°38'56.348"W	0.81	
7637.00	89.980	357.100	6959.91	1403.61	1364.24	-500.69	40°12'23.248"N	104°38'56.384"W	1.40	
7732.00	90.130	356.490	6959.82	1498.55	1459.09	-506.01	40°12'24.186"N	104°38'56.441"W	0.66	
7826.00	89.970	356.430	6959.73	1592.52	1552.91	-511.81	40°12'25.114"N	104°38'56.504"W	0.18	
7921.00	90.060	358.130	6959.71	1687.43	1647.80	-516.32	40°12'26.052"N	104°38'56.550"W	1.79	
8016.00	90.090	358.440	6959.58	1782.26	1742.76	-519.16	40°12'26.990"N	104°38'56.575"W	0.33	
8111.00	90.000	357.230	6959.51	1877.13	1837.69	-522.75	40°12'27.929"N	104°38'56.610"W	1.28	
8205.00	89.970	357.600	6959.53	1971.04	1931.59	-526.99	40°12'28.857"N	104°38'56.653"W	0.39	
8300.00	89.820	358.060	6959.71	2065.91	2026.52	-530.59	40°12'29.795"N	104°38'56.687"W	0.51	

REFERENCE WELLPATH IDENTIFICATION

Operator	NOBLE ENERGY, INC	Slot	SLOT#31 MOSER H22-748 (345°FNL & 1958°FEL, SEC.27)
Area	COLORADO	Well	MOSER H22-748
Field	WELD COUNTY (NOBLE NAD 83 GRID)	Wellbore	MOSER H22-748 AWB
Facility	SEC.27-T03N-R65W		

WELLPATH DATA (132 stations)

MD [ft]	Inclination [°]	Azimuth [°]	TVD [ft]	Vert Sect [ft]	North [ft]	East [ft]	Latitude	Longitude	DLS [°/100ft]	Comments
8395.00	90.030	357.210	6959.83	2160.80	2121.44	-534.51	40°12'30.734"N	104°38'56.726"W	0.92	
8490.00	90.000	0.240	6959.81	2255.57	2216.41	-536.62	40°12'31.672"N	104°38'56.741"W	3.19	
8584.00	90.060	1.270	6959.76	2349.07	2310.40	-535.38	40°12'32.601"N	104°38'56.714"W	1.10	
8679.00	90.090	359.620	6959.63	2443.62	2405.39	-534.64	40°12'33.540"N	104°38'56.693"W	1.74	
8774.00	90.030	0.610	6959.54	2538.22	2500.39	-534.45	40°12'34.478"N	104°38'56.678"W	1.04	
8869.00	90.030	2.290	6959.49	2632.58	2595.36	-532.05	40°12'35.417"N	104°38'56.636"W	1.77	
8963.00	90.060	1.340	6959.41	2725.89	2689.31	-529.07	40°12'36.345"N	104°38'56.586"W	1.01	
9058.00	90.240	1.860	6959.16	2820.23	2784.27	-526.42	40°12'37.283"N	104°38'56.540"W	0.58	
9153.00	90.060	2.680	6958.91	2914.44	2879.19	-522.66	40°12'38.220"N	104°38'56.480"W	0.88	
9248.00	89.870	1.510	6958.97	3008.68	2974.13	-519.18	40°12'39.158"N	104°38'56.423"W	1.25	
9343.00	89.690	358.700	6959.34	3103.27	3069.12	-519.01	40°12'40.097"N	104°38'56.409"W	2.96	
9437.00	89.690	356.390	6959.85	3197.16	3163.03	-523.04	40°12'41.025"N	104°38'56.449"W	2.46	
9532.00	89.630	357.550	6960.41	3292.10	3257.89	-528.06	40°12'41.963"N	104°38'56.502"W	1.22	
9626.00	89.780	352.950	6960.89	3386.07	3351.54	-535.84	40°12'42.889"N	104°38'56.591"W	4.90	
9721.00	89.780	348.780	6961.26	3480.81	3445.31	-550.92	40°12'43.817"N	104°38'56.774"W	4.39	
9816.00	89.660	355.340	6961.72	3575.65	3539.35	-564.03	40°12'44.748"N	104°38'56.931"W	6.91	
9910.00	89.720	359.880	6962.23	3669.61	3633.24	-567.95	40°12'45.676"N	104°38'56.970"W	4.83	
10005.00	90.120	4.150	6962.36	3763.75	3728.16	-564.61	40°12'46.613"N	104°38'56.915"W	4.51	
10100.00	89.930	5.750	6962.32	3857.28	3822.80	-556.42	40°12'47.548"N	104°38'56.798"W	1.70	
10194.00	90.030	5.560	6962.36	3949.62	3916.35	-547.15	40°12'48.471"N	104°38'56.667"W	0.23	
10289.00	90.030	5.370	6962.31	4042.99	4010.91	-538.11	40°12'49.405"N	104°38'56.539"W	0.20	
10384.00	90.090	4.690	6962.21	4136.50	4105.55	-529.78	40°12'50.339"N	104°38'56.420"W	0.72	
10478.00	90.210	0.300	6961.96	4229.64	4199.44	-525.69	40°12'51.267"N	104°38'56.355"W	4.67	
10573.00	90.550	351.670	6961.33	4324.53	4294.11	-532.33	40°12'52.203"N	104°38'56.429"W	9.09	
10668.00	89.870	352.620	6960.98	4419.43	4388.22	-545.31	40°12'53.134"N	104°38'56.585"W	1.23	
10763.00	89.900	355.740	6961.17	4514.41	4482.72	-554.95	40°12'54.069"N	104°38'56.697"W	3.28	
10857.00	89.720	359.360	6961.48	4608.29	4576.61	-558.96	40°12'54.997"N	104°38'56.738"W	3.86	
11046.00	90.270	357.700	6961.50	4796.89	4765.54	-563.81	40°12'56.864"N	104°38'56.777"W	0.93	
11141.00	89.350	357.590	6961.82	4891.78	4860.46	-567.72	40°12'57.803"N	104°38'56.815"W	0.98	
11236.00	88.580	3.590	6963.53	4986.24	4955.40	-566.74	40°12'58.741"N	104°38'56.791"W	6.37	
11330.00	88.550	6.140	6965.89	5078.78	5049.02	-558.77	40°12'59.665"N	104°38'56.677"W	2.71	
11425.00	88.700	6.540	6968.17	5171.85	5143.41	-548.28	40°13'00.597"N	104°38'56.530"W	0.45	
11519.00	90.060	4.570	6969.18	5264.21	5236.96	-539.18	40°13'01.520"N	104°38'56.401"W	2.55	
11614.00	89.960	2.360	6969.17	5358.13	5331.78	-533.44	40°13'02.457"N	104°38'56.315"W	2.33	
11709.00	89.990	1.120	6969.21	5452.44	5426.73	-530.56	40°13'03.395"N	104°38'56.266"W	1.31	
11803.00	89.840	359.040	6969.35	5546.05	5520.73	-530.43	40°13'04.323"N	104°38'56.253"W	2.22	
11898.00	89.840	357.370	6969.61	5640.88	5615.68	-533.40	40°13'05.262"N	104°38'56.279"W	1.76	
11993.00	89.620	357.520	6970.06	5735.79	5710.58	-537.64	40°13'06.200"N	104°38'56.322"W	0.28	
12087.00	89.620	358.070	6970.68	5829.66	5804.51	-541.25	40°13'07.129"N	104°38'56.357"W	0.59	
12182.00	89.720	358.760	6971.23	5924.48	5899.47	-543.88	40°13'08.067"N	104°38'56.379"W	0.73	
12377.00	89.870	358.110	6971.93	6119.09	6094.40	-549.21	40°13'09.994"N	104°38'56.424"W	0.34	LAST BHI MWD SURVEY
12401.00	89.870	358.110	6971.98	6143.06	6118.38	-550.00	40°13'10.231"N	104°38'56.431"W	0.00	PROJECTION TO BIT

REFERENCE WELLPATH IDENTIFICATION

Operator	NOBLE ENERGY, INC	Slot	SLOT#31 MOSER H22-748 (345'FNL & 1958'FEL, SEC.27)
Area	COLORADO	Well	MOSER H22-748
Field	WELD COUNTY (NOBLE NAD 83 GRID)	Wellbore	MOSER H22-748 AWB
Facility	SEC.27-T03N-R65W		

HOLE & CASING SECTIONS - Ref Wellbore: MOSER H22-748 AWB Ref Wellpath: MOSER H22-748 AWP

String/Diameter	Start MD [ft]	End MD [ft]	Interval [ft]	Start TVD [ft]	End TVD [ft]	Start N/S [ft]	Start E/W [ft]	End N/S [ft]	End E/W [ft]
9.625in Casing Surface	0.00	1852.00	1852.00	0.00	1851.87	0.00	0.00	-2.22	-13.00
8.5in Open Hole	1876.00	12401.00	10525.00	1875.86	6971.98	-2.35	-13.66	6118.38	-550.00

TARGETS

Name	TVD [ft]	North [ft]	East [ft]	Grid East [US ft]	Grid North [US ft]	Latitude	Longitude	Shape
SEC.15-T03N-R65W	0.00	0.43	44.69	3238231.91	1317831.74	40°12'09.720"N	104°38'49.524"W	polygon
SEC.22-T03N-R65W	1.00	739.70	-1124.47	3237062.81	1318570.98	40°12'17.136"N	104°39'04.500"W	polygon
SEC.27-T03N-R65W	1.00	739.49	-1146.81	3237040.46	1318570.76	40°12'17.136"N	104°39'04.788"W	polygon
MOSER H22-748 KOP (35' RADII)	2500.00	0.00	0.00	3238187.22	1317831.31	40°12'09.720"N	104°38'50.100"W	circle
MOSER H22-748 BHL ON PLAT REV-1 (499'FSL & 2471'FEL, SEC.15)	6933.00	6118.88	-550.37	3237636.87	1323949.91	40°13'10.236"N	104°38'56.436"W	point
MOSER H22-748 BHL ON PLAT REV-2 (499'FSL & 2471'FEL, SEC.15)	6950.00	6118.88	-550.37	3237636.87	1323949.91	40°13'10.236"N	104°38'56.436"W	point
MOSER H22-748 BHL ON PLAT REV-3 (499'FSL & 2471'FEL, SEC.15)	6961.00	6118.88	-550.37	3237636.87	1323949.91	40°13'10.236"N	104°38'56.436"W	point
MOSER H22-748 DRILLING COORIDOR (35' L/R & 8' U/D)	6961.00	6118.88	-550.37	3237636.87	1323949.91	40°13'10.236"N	104°38'56.436"W	polygon

WELLPATH COMPOSITION - Ref Wellbore: MOSER H22-748 AWB Ref Wellpath: MOSER H22-748 AWP

Start MD [ft]	End MD [ft]	Positional Uncertainty Model	Log Name/Comment	Wellbore
0.00	1858.00	Generic gyro - continuous (Standard)	GYRO SURFACE SURVEYS (GENERIC GYRO) 13 1/2" HOLE <0 - 1858>	MOSER H22-748 AWB
1858.00	12377.00	NaviTrak (MagCorr)	BHI MWD NAVI (MAGCORR) MONOBORE 8 1/2" HOLE <1858 - 12377>	MOSER H22-748 AWB
12377.00	12401.00	Blind Drilling (std)	Projection to bit	MOSER H22-748 AWB

REFERENCE WELLPATH IDENTIFICATION

Operator	NOBLE ENERGY, INC	Slot	SLOT#31 MOSER H22-748 (345'FNL & 1958'FEL, SEC.27)
Area	COLORADO	Well	MOSER H22-748
Field	WELD COUNTY (NOBLE NAD 83 GRID)	Wellbore	MOSER H22-748 AWB
Facility	SEC.27-T03N-R65W		

WELLPATH COMMENTS

MD [ft]	Inclination [°]	Azimuth [°]	TVD [ft]	Comment
1858.00	1.580	261.710	1857.87	TIE INTO GYRO SURVEYS
1907.00	1.840	244.210	1906.85	FIRST BHI MWD SURVEY
12377.00	89.870	358.110	6971.93	LAST BHI MWD SURVEY
12401.00	89.870	358.110	6971.98	PROJECTION TO BIT